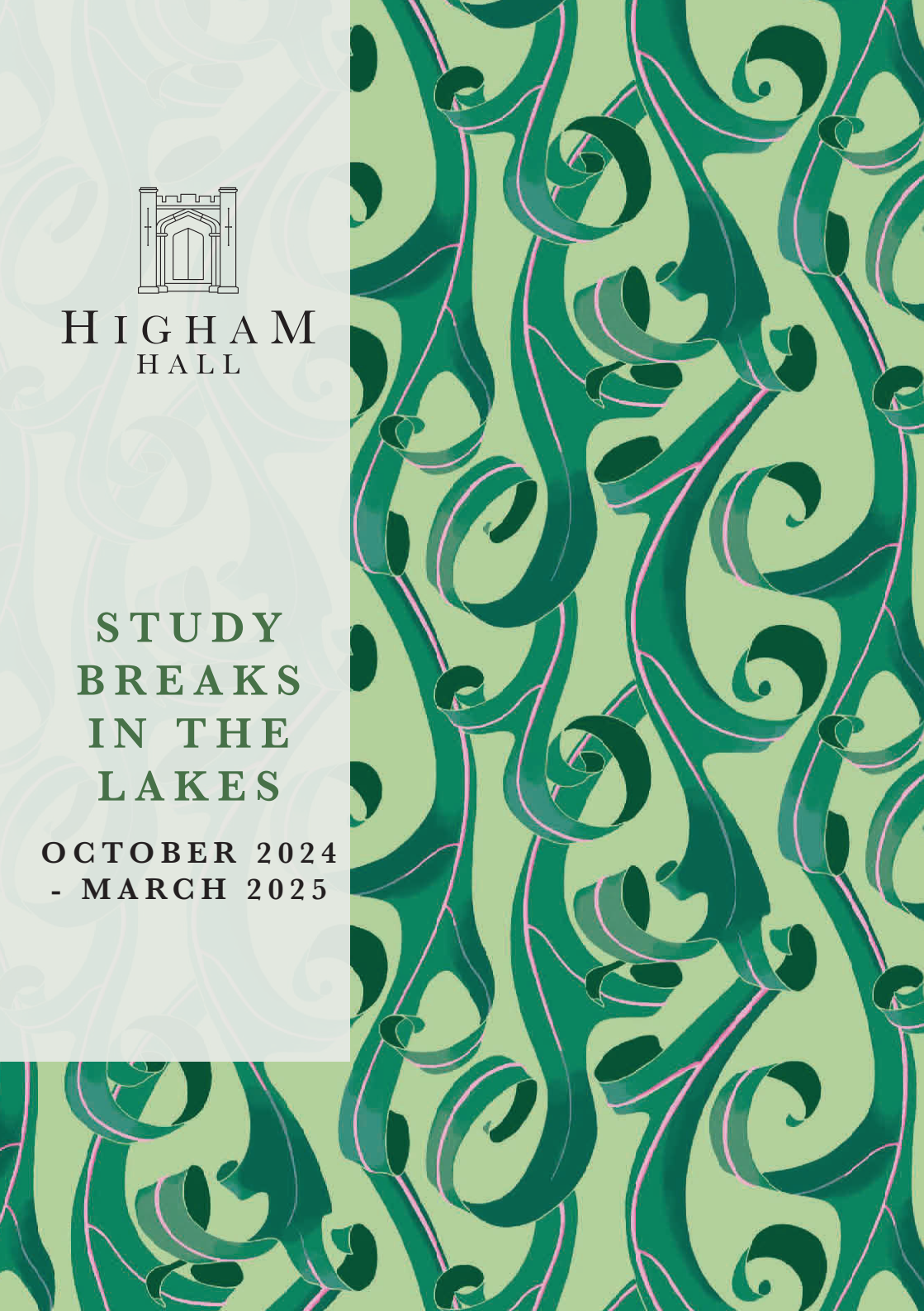


HIGHAM
HALL

STUDY
BREAKS
IN THE
LAKES

OCTOBER 2024
- MARCH 2025



IN THE GARDEN

This week we are:

- * Pallarding Cornus and taking hardwood cuttings
- * Preparing the soil for a new boundary hedge
- * Building a dead hedge around septic tank

We have seen:

Gollinkest
Common Frog
Frogspawn
Treetreeper
Nuthatch
Coal tit
Chaffinch
Blue tit
Great tit
Robin
Blackbird
Loudbird
Long tail tit
Crow
Robin
Song thrush

Contact us

017687 76276
admin@highamhall.com

Follow us

www.highamhall.com



@highamhall



Higham Hall

Image credits

Cover artwork:
Sally Alexandre

Other photography:
© Steve Razzetti/
Higham Hall College

Design and print

H&H Reeds

WELCOME



Meet our office team – Amy, Chris, Helen and Joan. It will be these lovely people you speak to when you call Higham; they will be the first people you meet when you arrive and the first port of call for anything you need while you're here.

We hope you enjoy browsing our new programme. Alongside familiar favourites there are new courses from creative writing to Nordic walking and, for those who live locally, we have more day courses, lectures and concerts.

Over the last two decades in the UK there has been a huge decline in informal adult education. Higham is still here thanks to the vision and determination of a small group of supporters who, in 2007, managed to persuade our local building society to lend them £1.1million to buy the college from the council, and established the educational trust we are today. Higham is the only adult education college in the UK to have succeeded in doing this. We receive no grant funding. Income from our courses generates enough revenue to support day-to-day running costs. This is testament to the value of lifelong learning and no small achievement; our running costs last year were over £3,000 per day. As a charity we do not make a profit; we will always keep prices as low as possible. But costs are continuing to rise and the only way we can meet these costs is to increase our fees.

Our wonderful 200-year old building is also feeling its age. Within the next decade it will need, among other things, a new roof. The cost will be beyond what we can raise through earned income. So as we approach the college's 50th anniversary we are looking ahead, thinking about the needs of future students to ensure this remarkable place can continue to support creativity, wellbeing and lifelong learning for everyone who finds their way here. We are kicking off our fundraising campaign with a raffle. Some wonderful prizes have been donated: please visit our website or <https://www.trybooking.com/uk/DQIJ> for the latest details. Buy a ticket if you can. Spread the word. The raffle will be drawn on Monday 2nd September 2024.

Higham is more than a place; it is everyone who comes here and everything that is made, imagined and done here. We are grateful for your continued support and look forward to welcoming you back soon.

A handwritten signature in black ink, appearing to read 'Elizabeth Fisher'.

Dr Elizabeth Fisher, Principal





COURSES

All courses take place in the main house or studio, a converted stable which is reached via an internal courtyard. All teaching spaces are on the ground floor and have level access.

Some courses run every year and there is often great demand for places. If you wish your name to be added to our 'register an interest' list for a particular course you can do this up to 12 months in advance. Just speak to a member of the office team.

All courses start with dinner at 6.30pm on the first day and end after lunch on the last day unless otherwise noted in the course programme.

It is now possible to book online for some day courses and lectures. If you have a smart phone or device you can scan the QR code or visit the website:



www.trybooking.com/uk/eventlist/highamhallcollege.

You can also always call to enquire about any course or event, to book a place and to discuss your accommodation requirements. Our office team are always happy to help. We do not have an answerphone service so please be patient if you can't get through at first.

Details correct at publication. Please note we reserve the right to make changes to the programme if necessary.

STAY UP TO DATE

Any alterations and late additions to the programme will be advertised in our eNewsletter.

Subscribe at www.highamhall.com



Course Categories



Music



Wellbeing



Literature



Textiles



Nature



History



Crafts



Philosophy



Visual Arts

BOTANICAL WATERCOLOUR PAINTING

Sculptural seed heads and glowing hedgerow fruits will inspire you to capture the fresh palette and clean lines of autumn. Working direct from nature, learn to accurately depict them in watercolour with technical demonstrations, knowledgeable guidance and one-to-one tuition. For both beginners and the more experienced.



Date Date Sun 29 Sep
to Wed 2 Oct 2024

Tutor Marion Wilson SBA

Cost Residential: £390
Non-residential: £270

Course code A2409MW

DRAWING AND PAINTING LAKELAND CHURCHES

The northern Lake District is littered with characterful old churches in stunning locations ideal for mixed-media sketching and painting en plein air. Join Lionel on 5 different painting expeditions to hone your skills in drawing both architectural and natural forms and using colour imaginatively or analytically, to capture the fleeting effects of weather, light conditions or the textures of tree bark and ancient stone in two or more media combined.



Date Mon 30 Sep to
Thu 3 Oct 2024

Tutor Lionel Playford

Cost Residential: £405
Non-residential: £285
(incl. field trips)

Course code A2409LP

GET WEAVING!

Explore the use of colour and texture. Dress a loom. Understand how to read pattern draft. Suitable for both absolute beginners and developing weavers.

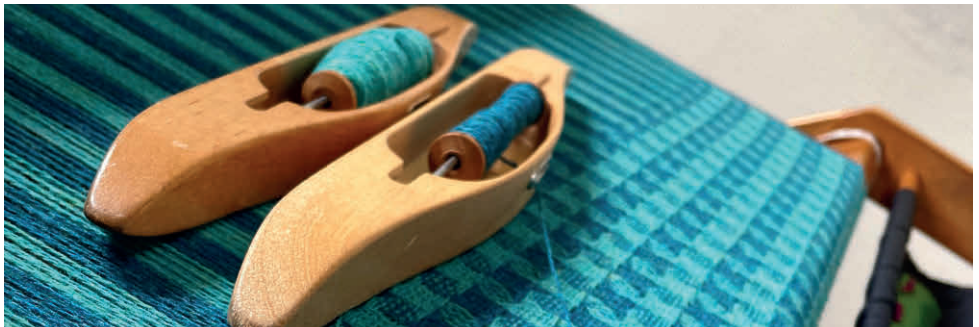


Date Tue 1 Oct to
Fri 4 Oct 2024

Tutor Jan Beadle

Cost Residential: £410
Non-residential: £285
(yarns £15 available to
purchase from tutor)

Course code C2410JB



BOOKBINDING: 16TH CENTURY ITALIAN LIMP BINDING MODEL



We are going back to the 16th century to make a limp vellum binding style. BUT as vellum is so expensive, we will be making one from book cloth instead, which will be lined with a thin card. You will create a stiff leather spine lined with vellum, which will have decorative stitching and buttons, before bringing the spine, cover and book sections together using the Coptic or chain stitch method. This will be finished off with a fore edge flap and plaited thread fastenings, and beads so good hand skills are required but trust me, it will be fun to make.

Date Wed 2 Oct to
Sat 5 Oct 2024

Tutor Doug Mitchell

Cost Residential: £410
Non-residential: £285
(materials at cost)

Course code C2410DM

STRING ORCHESTRA WEEKEND



A weekend for string players exploring wonderful music for string orchestra directed by professional violinist Louise Latham. Repertoire as follows: Torelli Concerto Grosso; Finzi Romance; Janacek Suite; Tippett Little Music for Strings.

Date Fri 4 Oct to
Sun 6 Oct 2024

Tutor Louise Latham

Cost Residential: £320
Non-residential: £235

Course code M2410LL



WOODCARVING: CREATIVE RELIEF CARVING



Relief carving is the process of cutting a pattern or design into a flat surface. For those new to the craft, Sharon will gently guide you through the process of transforming a block of wood into a unique image in relief with generous one-to-one support, technical instruction and extensive knowledge of her subject. Bring your own visual sources or use Sharon's books for inspiration. Learn to transfer a pattern, use chisels safely and try a range of carving techniques. For beginners and experienced woodworkers. Those who have attended previous courses may bring projects of their own to work on.

Date Sat 5 Oct to
Fri 11 Oct 2024

Tutor Sharon Littlely

Cost Residential: £685
Non-residential: £440

Course code C2410SL

THE FILM WESTERN FROM 1960 TO THE PRESENT DAY



The Western has always reinvented itself. Though from the 1960s onwards fewer Westerns were made, the images, archetypes and provocations of the genre continued to captivate artists and audiences worldwide. Each era had its take on the cowboy, the cattle baron and the frontier. The course will trace the ways in which the Western continues to speak right up to the present day, using three key films and clips from many others.

Date Sun 6 Oct to
Tue 8 Oct 2024

Tutor Stephen Longstaffe

Cost Residential: £305
Non-residential: £220

Course code L2410SL



DISCOVER THE VERSATILITY OF SOFT PASTEL



Aim for vibrant and atmospheric paintings, be inspired using soft pastels on a variety of different backgrounds. Step by step and personal guidance. For all levels to enjoy.

Date Sun 6 Oct to
Tue 8 Oct 2024

Tutor Sue Ford

Cost Residential: £305
Non-residential: £220

Course code A2410SF

NATURE JOURNALLING



Nature journals can be an ideal way to connect more closely with nature. It has proven benefits to our wellbeing, and is a fun way to add value to even the shortest walk. Explore the different ways to record your finds, and leave with a plan and the beginning of your own journal. Ideal for those who believe that they can't draw, support and guidance provided. If you're an accomplished artist, explore an alternative way to create. Sketchbooks provided.

Date Wed 9 Oct to
11 Oct 2024

Tutor Andrew Thurm

Cost Residential: £315
Non-residential: £230

Course code A2410AT

INTRODUCTION TO GARDEN HISTORY



This course offers an introduction to Garden History through the ages. This course will examine the trends in design, plant collecting, inspiration and socio-political contexts within and around gardens. Beginning with ancient Egypt, this course will delve into the gardens of ancient Greece and Rome, followed by Medieval and Islamic gardens, then exploring the Italian Renaissance, French baroque and ending with the pleasure gardens of 18th-century England.



Date Wed 9 Oct to
Fri 11 Oct 2024

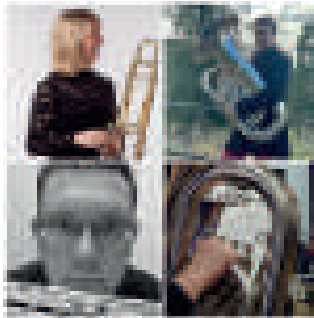
Tutor Alley-Marie Jordan

Cost Residential: £305
Non-residential: £220

Course code N2410AMJ

BRASS BAND WEEKEND

A serious yet relaxed weekend for brass band players to rehearse and perform popular, and perhaps lesser-known, brass band repertoire. There will be both whole-band and sectional rehearsals. All prospective players must contact Martyn at martyngrisdale@gmail.com before enrolling to ascertain level, instrument(s) and suitability.



Date Fri 11 Oct to
Sun 13 Oct 2024



Tutor Martyn Grisdale
(course leader) with Andy
Kershaw and Becky Smith

Cost Residential: £330
Non-residential: £245

Course code M2410MG

DAY COURSE**EXPLORE DRAWING - A BEGINNERS COURSE**

A gentle introduction to drawing, working at your own pace with artist and tutor Ceri Allen. Learn the basics of drawing materials, methods and techniques.

Date 10am - 5pm
Sat 12 Oct 2024



Tutor Ceri Allen

Cost £95 including lunch

Course code D2410CA

BOOK ONLINE

Scan QR code on page 4

SOLWAY MARITIME HISTORY

This course explores the rich maritime history and stunning landscapes of the Solway coast. With a programme of minibus-based field trips we will visit different harbours, historic quaysides and coastal sites stretching from Whitehaven in West Cumbria through to Dumfries in South West Scotland.

Date Sun 13 Oct to
Wed 16 Oct 2024

Tutor Fiona Stoddart

Cost Residential: £455
Non-residential: £330
(includes minibus trips)

Course code H2410FS



LACE AS YOU LIKE IT

Have you ever wondered how lace is made? Would you like to learn this fascinating craft? All abilities are welcome, from complete beginner through to advanced. Want to try a lace type that you have not made before? Most of the many different lace types can be accommodated in the class. If you have a pattern or project that has been giving you difficulties, bring it along for constructive advice and/or instruction. The classes are all run in a friendly, positive and supportive atmosphere. Lacemaking equipment may be borrowed by prior arrangement.



Date Sun 13 Oct to
Tue 15 Oct 2024

Tutor Jan Gardiner

Cost Residential: £305
Non-residential: £220
(basic materials available to purchase from tutor £5-£10)

Course code C2410JG1

ENAMEL BOWLS

This course will focus on making fired enamel copper bowls of different sizes. There will be a range of sizes available to work with, from small to very large bowls, but those who have not made an enamel bowl before will be encouraged to start small. We will troubleshoot the challenges of working at scale and experiment with enamel colours and techniques used in firing larger items to achieve captivating effects. Students will be encouraged to develop their own decorative styles and techniques, supported by Sharon's wide-ranging specialist knowledge and expertise. Please note this course is NOT for beginner enamellers. All materials available to purchase at cost from the tutor.

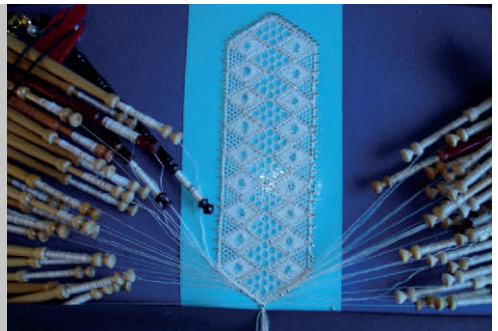


Date Mon 14 Oct to
Fri 18 Oct 2024

Tutor Sharon Ford

Cost Residential: £520
Non-residential: £380

Course code C2410SF



LACE AS YOU LIKE IT

Have you ever wondered how lace is made? Would you like to learn this fascinating craft? All abilities are welcome, from complete beginner through to advanced. Want to try a lace type that you have not made before? Most of the many different lace types can be accommodated in the class. If you have a pattern or project that has been giving you difficulties, bring it along for constructive advice and/or instruction. The classes are all run in a friendly, positive and supportive atmosphere. Lacemaking equipment may be borrowed by prior arrangement.



Date Tue 15 Oct to
Thu 17 Oct 2024

Tutor Jan Gardiner

Cost Residential: £305
Non-residential: £220
(Basic materials available to purchase from tutor £5-£10)

Course code C2410JG2

MUSHROOMS, TOADSTOOLS AND OTHER FUNGI

Our seasonal opportunity to develop fungi identification skills with a renowned expert. Minibus field trips: easy, but off-path walking. Collect and observe fungi in various habitats, examine finds, accurately identify with a range of keys for identification to both genus and species. For anyone interested in fungi, seasoned or unseasoned, with a wish to learn. For the gastronomic, edible finds may be sent to the kitchen: a tasting opportunity! Coincides with our PAINTING FUNGI course.



Date Thu 17 Oct to
Sun 20 Oct 2024



Tutor Paul Nichol

Cost Residential: £425
Non-residential: £300
(incl. field trip)

Course code N2410PN

PAINTING FUNGI

A chance to try botanical painting alongside our annual MUSHROOMS, TOADSTOOLS AND OTHER FUNGI identification course which should mean a wide range of real examples and mycological expertise will be immediately to hand if you wish to deepen your knowledge of your subject. Work in watercolour, coloured pencil or try a mixture of both, with demonstrations and individual tuition throughout to bring the subject to life. Suitable for all abilities.



Date Thu 17 Oct to
Sun 20 Oct 2024

Tutor Marion Wilson SBA

Cost Residential: £410
Non-residential: £285

Course code A2410MW



DAY COURSE

INTRODUCTION TO BRYOPHYTES (MOSSES AND LIVERWORTS)

An introductory course in which we will look at identifying some of the most common bryophytes. We will look at the main features that help with identification, collect some species from the grounds and practise using a key. We will use hand lenses and microscopes to appreciate the details of these tiny plants and get a better look at their defining features.

Date 10am – 5pm
Thu 17 Oct 2024



Tutor Clare Shaw

Cost £120 including lunch

Course code D2410CS

BOOK ONLINE

Scan QR code on page 4

SHAKESPEARE'S CORIOLANUS: HERO OR VILLIAN?



Join us to explore an unexpectedly topical Roman tragedy, set against a cost of living crisis, class conflict, contentious elections, and the threats of external warfare. Coriolanus is a war hero rejected by the populus when he proves unable to 'play politics'; his attempted revenge brings about his own destruction.

Date Fri 18 Oct to
Sun 20 Oct 2024

Tutor Clare Smout

Cost Residential: £305
Non-residential: £220

Course code L2410CS



WOODBLOCK PRINTMAKING WEEKEND



Transform your own designs into print, perhaps for a christmas card, using the fascinating media of woodcut and wood engraving. Working with plywood, MDF, end-grain hardwood or plastic blocks, a wide range of styles is possible, whatever your art background. Beginners or experienced, be inspired to start a home industry!

Date Fri 18 Oct to
Sun 20 Oct 2024

Tutor Peter Collins

Cost Residential: £305
Non-residential: £220

Course code C2410PC

DAY COURSE

MAKING SENSE OF MID-LIFE, MENOPAUSE AND THE AGEING PROCESS

This workshop is for women only and will provide a safe and nurturing space to explore the significance of menopause, mid-life and ageing. During my 25 years as a Jungian relational depth psychotherapist, I have come to value menopause as a "woman's wisdom-centred metamorphosis" - a momentous opportunity for inner transformation, new beginnings and significant personal growth and integration. In this workshop I will offer ideas from my practice and from both western psychology (including Carl Jung's individuation concept and Carl Roger's Good Life and fully functioning person concept) and Indian philosophy to provide context and support understanding. Through discussion and self-reflection exercises, participants will be encouraged to engage with the meaning of their own menopause and mid-life experiences.

Date 10am - 4pm
Sat 19 Oct 2024



Tutor Lina Mookerjee

Cost £95 including lunch

Course code D2410LM

BOOK ONLINE

Scan QR code on page 4

DAY COURSE

INTRODUCTION TO UPHOLSTERY (1)

A small starter project to complete in a day - replace a drop in seat in a dining chair, piano stool or small stool - using a mixture of traditional and modern techniques. Learn how to take off old coverings and work out what you can reuse, rebuild with appropriate filling, fabric selection and placement, fixing and finishing techniques. For beginners tailored to equip you with basic skills and knowledge of upholstery. This is the first of three day courses in October, December and February. It can be attended on its own or alongside one or both other days to work on a larger project or different projects. Each day needs to be booked separately.

Date 10am – 4pm
Mon 21 Oct 2024



Tutor Cathy Newbery

Cost £95 including lunch

Course code D2410CN

BOOK ONLINE

Scan QR code on page 4

QUILT AS YOU GO LOG CABIN

Log Cabin is a very versatile patchwork block with many variations. For this project you can create nine different log cabin variations (no foundation piecing involved) as a sampler quilt or as a 'Sew A Row' quilt. The different blocks are quilted before being joined together using a 'Quilt As You Go' technique. No previous experience is required as these are easy blocks to create. You may bring your own project if you prefer.



Date Wed 23 Oct to
Sat 26 Oct 2024

Tutor Lis Binns

Cost Residential: £410
Non-residential: £285

Course code C2410LB1



PEN AND WASH

A course looking at pen and ink techniques and combining them with watercolour to create line and wash artwork. We will be looking at how to create textures, tones and decorative patterns with ink and how to paint various washes and then combining the two to produce line and wash work. Demonstrations, help and advice will be given throughout the course and you should be able to handle your materials with confidence by the end of the session. A chance to explore both watercolours and ink work. Suitable for beginners and those with some experience.



Date Fri 25 Oct to
Sun 27 Oct 2024

Tutor Jane Beech

Cost Residential: £305
Non-residential: £220

Course code A2410JB

GILDING NATURE



Learn techniques for gilding flowers, leaves and seedheads from your garden. Start with pressed leaves and flowers, then progress onto more challenging 3D items such as dried pods, seedheads, cones, bark, fresh leaves, flowers, pebbles and shells. Put together your own arrangements to create decorative pieces for christmas, weddings and special occasions.

Date Fri 25 Oct to
Sun 27 Oct 2024

Tutor Jo Mabbutt

Cost Residential: £325
Non-residential: £240
(incl. materials)

Course code C2410JM1

QUILT AS YOU GO LOG CABIN



Log Cabin is a very versatile patchwork block with many variations. For this project you can create nine different log cabin variations (no foundation piecing involved) as a sampler quilt or as a 'Sew A Row' quilt. The different blocks are quilted before being joined together using a 'Quilt As You Go' technique. No previous experience is required as these are easy blocks to create. You may bring your own project if you prefer.

Date Sat 26 Oct to
Tue 29 Oct 2024

Tutor Lis Binns

Cost Residential: £410
Non-residential: £285

Course code C2410LB2

TIME TO WRITE



A creative retreat in the idyllic surroundings of the Lake District which has been an inspiration to generations of writers. Whether you're a beginner needing help to put your ideas on paper, or an author longing for a peaceful space, constructive feedback and the company of other writers, this is for you. There will be workshops, discussions, time to write and explore the landscape, as well as one-to-one sessions, guided by an experienced, well-published author and creative writing tutor.

Date Sun 27 Oct to
Wed 30 Oct 2024

Tutor Kathleen Jones

Cost Residential: £410
Non-residential: £285

Course code L2410KJ

SUNDAY LECTURE

SAMUEL TAYLOR COLERIDGE: LIFE, LITERATURE AND IMAGINATION

Famous as the author of *The Rhyme of the Ancient Mariner*, Samuel Taylor Coleridge is one of the most intriguing and contradictory characters in English literature. He is also of course a leading figure among Lake District writers. This lecture will focus on Coleridge's achievements as a poet and thinker, in the context of his life, his literary and personal relationships, and his close experience of the Lake District mountains.

Date 2pm - 4pm
Sun 27 Oct 2024

Tutor Bill Jones

Cost £18 each or £32 for
2 including refreshments

Course code D2410BJ

BOOK ONLINE

Scan QR code on page 4

GILDING FOR CHRISTMAS

Bring some metallic glitz to your own christmas cards and wrapping paper this year! Learn to use real metal leaf, metallic transfer foil and metallic powders to create striking patterns and designs, bold and subtle images and backgrounds. Print and stencil with metallic varnishes and waxes for wrapping paper designs and textures. Experiment with combinations and layouts before assembling your christmas cards.



Date Sun 27 Oct to
Tue 29 Oct 2024

Tutor Jo Mabbutt

Cost Residential: £325
Non-residential: £240
(incl. materials)

Course code C2410JM2

PIANO IMPROVISATION

Develop your improvisational skills using well-known pop songs. Play tunes you know and like in the way you want to play them. Convert a melody into different styles. Don't let dots get in the way. If this doesn't get you tickling the ivories with more confidence, nothing will! For anyone willing to give it a go. Bring your own keyboard or borrow one of the keyboards at Higham. You will also need to bring your own headphones. If you wish to borrow one of Higham's keyboards (numbers are limited), please mention this when booking.



Date Sun 27 Oct to
Wed 30 Oct 2024

Tutor Robin Harrison

Cost Residential: £410
Non-residential: £285

Course code M2410RH



CAPTURE SCOTTISH SCAPES: EXPLORE EXPRESSIVE MIXED MEDIA

Create expressive landscape paintings inspired by Scotland using reference photos provided by your tutor, who will encourage you to paint loosely, work in layers and explore colour through a combination of group activities and one-to-one tutoring. Mixed media, for all levels.



Date Tue 29 Oct to
Sun 3 Nov 2024

Tutor Marion Boddy-Evans

Cost Residential: £590
Non-residential: £405

Course code A2410MBE

INTERMEDIATE WOODWIND WORKSHOP DIRECTED BY LAURENCE PERKINS

All applications to be made initially through Laurence to ascertain ensemble line-up. www.laurenceperkins.com/wind-serenades. There will be a free informal concert with participants on Sunday at 11:15am

We can pick up at 5pm from Penrith Rail Station (+£40) BY PRIOR ARRANGEMENT ON PAYING BALANCE.



Date Wed 30 Oct to
Sun 3 Nov 2024

Tutor Laurence Perkins
with Mandy Burvill

Cost Residential: £620
Non-residential: £485

Course code M2410LP

BOTANICAL ART IN COLOURED PENCIL: OBSERVING NUTS, BERRIES, SEEDS AND FRUITS



Take a close look at seasonal nuts, fruits and berries to accurately capture their colours, textures and forms in coloured pencil. Working on either a single study or a small mixed composition, there will be explanations of techniques, demonstrations and individual attention while you work at your own pace in a relaxed atmosphere. Suitable for beginners and those with some experience of this popular medium.

Date Sun 3 Nov to
Fri 8 Nov 2024

Tutor Susan
Christopher-Coulson

Cost Residential: £610
Non-residential: £425
(incl. field trip)

Course code A2411SCC

EXPRESSIVE SEMI-ABSTRACT MIXED MEDIA LANDSCAPES



Explore mixed media techniques using watercolour, gouache, acrylics, inks and soft pastel. We may venture outdoors (weather permitting), painting and drawing in the dramatic Lakeland landscape in order to build up a body of source material to work with, but this course focuses on developing your personal painterly style through exercises in the studio. We will explore our responses to the subject of landscape through processes of abstraction and the use of colour, paying attention to the expressive potential of different forms of mark-making and the responsiveness of different media. An in-depth course aimed at the intermediate level art student and above with good drawing skills and colour knowledge (experience of acrylics not necessary).

Date Sun 3 Nov to
Fri 8 Nov 2024

Tutor Robert Dutton

Cost Residential: £680
Non-residential: £490

Course code A2411RD



ELGAR: MUSIC FOR AUTUMN



Elgar often looked back nostalgically, with wistful tenderness or at times with regret. For this course Ian has selected movements from Elgar's symphonies and concertos together with his shorter orchestral pieces, chamber works and choral excerpts. This heartfelt music will enrich the autumnal journey with Elgar as our companion and guide.

Date Sun 3 Nov to
Tue 5 Nov 2024

Tutor Ian France

Cost Residential: £305
Non-residential: £220

Course code M2411IF

STOICISM AS A GUIDE TO LIFE: THE FOUR VIRTUES



Though many people wish to live a full and flourishing life, it is not always as easy as the next self-help bestseller might suggest. For the Stoics, there is a clear path to flourishing and well-being, and this involves cultivating the virtues of courage, temperance, justice and wisdom. Happiness in life depends upon the quality of our thoughts, and through group discussion, reflection, meditation, contemplative writing and a little time in nature, we will explore the Stoic path as a guide to happiness and flourishing.

Date Tue 5 Nov to
Fri 8 Nov 2024

Tutor Darren Harper

Cost Residential: £410
Non-residential: £285

Course code L2411DH

UPHOLSTERY WEEKEND



Hands-on! Bring chair, stool, ottoman, headboard... Build up from scratch or just re-cover, tackle interior paddings with traditional or modern techniques.

Please contact Cathy prior to your course to discuss your project needs. Contact information available from the Higham office.

Date Fri 8 Nov to
Sun 10 Nov 2024

Tutor Cathy Newbery

Cost Residential: £305
Non-residential: £220

Course code C2411CN



TALK & TEA: A PHILOSOPHER'S GUIDE TO SIMPLICITY

Ever contemplated the profound essence of simplicity? Can Thoreau's retreat to Walden Pond unveil the secrets of a meaningful, uncluttered life in the midst of nature? How does Emrys Westacott's philosophy navigate the intricacies of modernity, offering insights into embracing simplicity amidst the complexities of a technology-driven world? Join us for 'A Philosopher's Guide to Simplicity,' where these questions unravel the philosophies of Thoreau and Westacott, guiding us toward a more intentional and uncomplicated existence.

Date 2pm – 4pm
Fri 8 Nov 2024

Tutor Darren
Harper

Cost tickets £18 each
or £32 for 2 including
refreshments

Course code D2411DH



A WEEKEND WITH THE HARP

All ability levels except absolute beginners. Emphasis will be on having fun, but attention will be paid to technique, tone, accuracy and musicality. Written music supplied and specially written parts will cater for all levels. All styles - something for everyone!

Organised by Gill Salter-Smith for Harps Northwest
www.harpsnorthwest.org.uk



Date Fri 8 Nov to
Sun 10 Nov 2024

Guest Tutors:
Karen Marshalsay
and Lauren Scott

Cost Residential: £325
Non-residential: £240

Course code M2411HNW



CEILIDH BAND FOLK ENSEMBLE FOR ALL

For musicians of any standard with basic playing skills and a concert pitch instrument such as violin (fiddle), viola, cello, mandolin, mandola, banjo, ukulele, guitar, flute whistle, piano accordion, melodeon, concertina etc. Parts for transposing instruments in Bb, Eb and bass clef will be available. We will play a wide range of traditional and contemporary folk music from the British Isles, America and beyond with parts tailored to all abilities. All music will be provided and students are also encouraged to bring any music they have been playing to share with each other or perform themselves.



Date Sun 10 Nov to
Thu 14 Nov 2024

Tutor Chris McShane

Cost Residential: £520
Non-residential: £380

Course code M2411CM

TRADITIONAL STAINED GLASS

Make a traditional stained-glass panel using key skills that will enable you to construct more elaborate projects later, including preparing your pattern, cutting glass safely, leading and soldering and finally, finishing your panel ready to be hung in your home. No experience required - be guided in all aspects by local stained-glass artist, Nikki Clark. Returning students are welcome to bring their own designs to work on with Nikki's support; please contact Nikki in advance to discuss ideas and options. Contact details from office.



Date Tue 12 Nov to
Fri 15 Nov 2024

Tutor Nikki Clark

Cost Residential: £410
Non-residential: £285

Course code C2411NC

CALICO GARDENS EMBROIDERY



Calico Embroidery is worked in neutral shades of cream and beiges only. It relies upon textured stitches and its own unique 3D elements to add interest to the embroideries. It is suitable for all levels of embroiders and a kit can be purchased for first time students.



Date Tue 12 Nov to
Fri 15 Nov 2024

Tutor Angie Burt

Cost Residential: £410
Non-residential: £285
(WEEKEND course follows)

Course code C2411AB1

SILVER RING MAKING WITH ART CLAY SILVER



Making rings in metal clay can be one of the most challenging things to do with this medium.

During this course, students will learn the essential tips, tricks and trade secrets to make beautiful silver clay rings, sizing them to account for shrinkage to make perfect, seamless ring bands.

With so many different and endless possibilities in ring band shapes, our planned project tasks will challenge students' skills while learning new techniques in our own uniquely devised ring making methods.

Date Fri 15 Nov to
Sun 17 Nov 2024

Tutor Tracey Spurgin

Cost Residential: £305
Non-residential: £220
(materials available to purchase from tutor c. £68 subject to silver prices)

Course code C2411TS



CALICO GARDENS EMBROIDERY



Calico Embroidery is worked in neutral shades of cream and beiges only. It relies upon textured stitches and its own unique 3D elements to add interest to the embroideries. It is suitable for all levels of embroiders and a kit can be purchased for first time students.

Date Fri 15 Nov to
Sun 17 Nov 2024

Tutor Angie Burt

Cost Residential: £305
Non-residential: £220

Course code C2411AB2

RECORDER ENSEMBLES: GRADES 4-6

For intermediate players (roughly grades 4-6). An opportunity to play together over a pleasant weekend with others, with expert guidance as appropriate.



Date Fri 15 Nov to
Sun 17 Nov 2024

Tutor Annemarie Klein

Cost Residential: £310
Non-residential: £230

Course code M2411AK

CRAFTER'S WEEK

A week of workshops and demos for craft students led by some of our most sought-after tutors, offering a rich mix of inspiration, techniques and styles. Students will spend a day with each tutor, completing a simple project in a day while learning the fundamentals of four different crafts. Materials available to purchase from tutors.



Date Sun 17 Nov to Fri 22 Nov 2024

Tutors Rebecca Halstead (Silver Jewellery), Clare Melinsky (Lino-Cut Printmaking), Michelle Hickman (Sculptural Needlefelt), Angie Burt (Embroidery)

Cost Residential: £640
Non-residential: £455

Course code C2411CW

WILLOW BASKET-MAKING - BEGINNERS

Work with Cumbrian basket maker Phil Bradley to learn the techniques involved in English roundwork basketry. We will cover some of the basic elements of working with willow and - new for this year - visit Phil's studio and smallholding to take a look at the growing, harvesting and managing of willow beds.

Date Fri 22 Nov to
Tue 26 Nov 2024

Tutor Phil Bradley

Cost Residential: £565
Non-residential: £425
(incl. all materials and field trip)

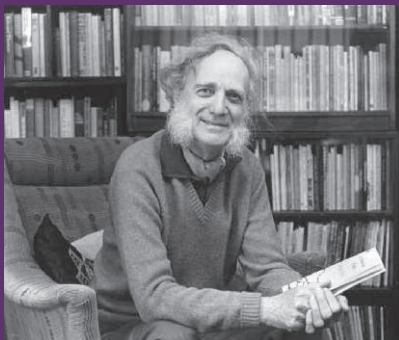
Course code C2411PB



SUNDAY LECTURE

NORMAN NICHOLSON: A WRITER FOR OUR TIME

The Cumbrian poet Norman Nicholson (1914-1987) lived in Millom all his life, apart from the two-year period he spent as a teenager in a TB Sanatorium in the New Forest. Proud to be identified with his region, Nicholson was nationally and internationally respected for his poetry and other writings, which were accessible, insightful and even prophetic in their nature. This lecture will explore the life and work of Norman Nicholson, whose response to nature, society, spirituality, and the environment in his time resonates even more strongly in our own.



Date 2pm – 4pm
Sun 24 Nov 2024



Tutor Dr. Antoinette Fawcett

Cost tickets £18 each
or £32 for 2 including
refreshments

Course code D2411AF

CARTOONS FOR CHRISTMAS

This entertaining short break will give you the basic skills necessary to draw cartoon figures and animals and offer several ingenious methods to cheat at drawing your own christmas cards. Everyone can produce their own cartoon card with the aid of a few simple tricks, a modicum of practice and the supportive company of fellow cartoonists. From stick figures to snow-persons, come and get the satisfaction of producing your own fun cards this christmas.



Date Sun 24 Nov to
Tue 26 Nov 2024

Tutor Colin Shelbourn

Cost Residential: £305
Non-residential: £220

Course code A2411CS



INSECTS IN CHINESE BRUSH PAINTING



You will either wish to improve your Chinese brush painting or be a painter wanting to try new techniques in this ancient artform that is still evolving. A relaxed, informative and practical course. Time will be spent on composition with a little theory from studying some masters. Lots of support, guidance and all materials necessary will be provided.

Date Mon 25 Nov to
Thu 28 Nov 2024

Tutor Peta Allingham

Cost Residential: £430
Non-residential: £305
(incl. materials)

Course code A2411PA



GEOLOGY WITH ANNETTE MCGRATH: ROCKS, MINERALS, FOSSILS



A thorough introduction to rocks, minerals and fossils through illustrated talks and hands-on practical sessions. You will have the opportunity to examine a museum-quality geological collection from around the world and scrutinise the inner secrets of igneous, metamorphic and sedimentary rocks down the microscope. A large selection of geological specimens, geological maps and books will also be to hand for reference.

Date Tue 26 Nov to
Fri 29 Nov 2024

Tutor Annette McGrath

Cost Residential: £420
Non-residential: £295

Course code N2411AM

SILVERPOINT, PEN & BRUSH WITH INK



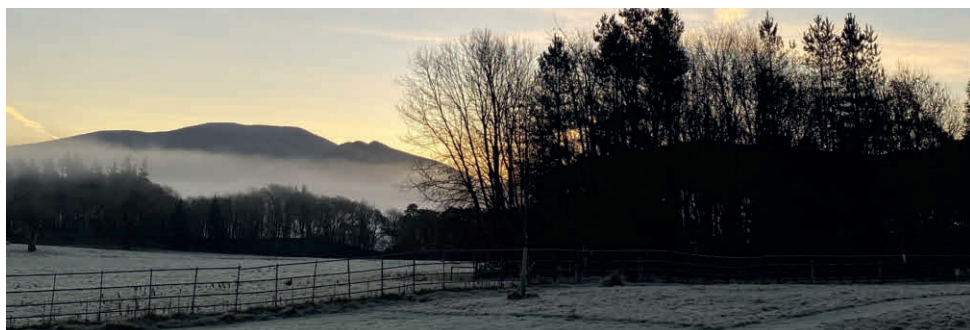
We will be exploring traditional drawing techniques including the old art of silverpoint - an early method of drawing used by artists such as Albrecht Dürer and Leonardo da Vinci. It is a drawing made on a prepared ground using silver (or gold or copper) which then tarnishes, creating fine lines. There will also be an opportunity to draw winter landscapes based around Higham using freer techniques in black and white using pen and brush with ink.

Date Wed 27 Nov to Fri
29 Nov 2024

Tutor Linda Birch

Cost Residential: £305
Non-residential: £220

Course code A2411LB



AUTUMN YOGA RETREAT: TOWARDS A PERSONAL PRACTICE



An opportunity to explore and deepen your understanding of the accessible approach to Vini yoga as developed by the pioneering yoga teacher T.K.V. Desikachar; adapted to the individuals ability and needs. All levels welcome.

Date Fri 29 Nov to
Sun 1 Dec 2024

Tutor Amanda Oakes

Cost Residential: £305
Non-residential: £220

Course code F2411AO

CHRISTMAS CREATIONS



Get into the christmas spirit! Arrangements will include several of the following: a scarlet christmas basket, a lit bauble bowl, an icy winter scene, a lantern, a Scandi felt pot design, a decorated christmas tree, a candlelit platter, a window ledge design with accessories. All materials will be provided. Just bring scissors, wire cutters and secateurs (or borrow Karen's) and enjoy creating for christmas. Always a real treat, fun and creative - we suggest you bring a decent box or crate to carry home your creations!

Date Fri 29 Nov to
Sun 1 Dec 2024

Tutor Karen Neville

Cost Residential: £345
Non-residential: £260
(incl. materials)

Course code C2411KN

CONTEMPORARY LANDSCAPE PAINTING



Look at fresh approaches to working from the landscape, via the lens of contemporary painting. With exercises, briefs and tutorials, be pushed to extend your responses to your chosen media and subject matter.

Date Fri 29 Nov to 9am
Wed 4 Dec 2024

Tutor Steve Humble

Cost Residential: £605
Non-residential: £420
(incl. field trips)

Course code A2411SH

SPECIAL EVENT**WILL FINN AND ROSIE CALVERT IN CONCERT**

Join Will Finn and Rosie Calvert for festive spine-tingling harmonies and rousing instrumentation with warm and witty stage presence - a show not to be missed!

Date 8pm - 9:30pm
Sun 1 Dec 2024



Tutors Will Finn and
Rosie Calvert

Cost tickets £18 each
or £32 for 2. Includes a
glass of wine in the bar
afterwards.

Event code D2412RC

**FESTIVE FOLK SINGING WITH ROSIE AND WILL**

Come and join Rosie and Will for some seasonal folk singing with this gentle introduction to singing folk music in three- and four-part harmony! Can't read music? No problem - folk is an oral tradition, and we teach everything by ear. Learn how to warm up your voice, sing in rounds and in parts and learn harmonies by ear with no music reading required as you become acquainted with a wonderful folk repertoire with two confident and friendly tutors providing plenty of support and guidance. Suitable for all, even non-musicians. Will and Rosie have been professional performers for the last 12 years and have a wealth of experience to offer their students.



Date Sun 1 Dec to 4pm
Tue 3 Dec 2024

Tutors Will Finn and
Rosie Calvert

Cost Residential: £335
Non-residential: £250

Course code M2412RC

THE ART OF PAINTING NOCTURNES

Take advantage of the early sunsets of mid-winter to sketch the nocturnal scene from dusk to starry night at Higham Hall including natural and artificial light. Back in the studio we will develop these into painting studies that evoke a sense of nocturnal place and mood. We will look at great nocturnal painters like Whistler, Homer, Grimshaw, Munch and Hopper for inspiration copying their work to understand how they conveyed different moods through tone, colour, mark and composition. With demonstrations, group discussions and individual support throughout. This course is for students with moderate or greater experience of painting wanting to try something more challenging.



Date Sun 1 Dec to
Thu 5 Dec 2024

Tutor Lionel Playford

Cost Residential: £520
Non-residential: £380

Course code A2412LP

SUNDAY LECTURE

THE CULINARY CALENDER CUSTOMS OF CUMBRIA

Until recently, the working class families of the farming, forestry and mining communities of Lakeland subsisted on a fairly simple diet, largely based on locally grown oats and barley. However, on feast days and other special occasions, this grainy monotony was enlivened by celebratory dishes, which often contained exotic spices and dried fruit. A Christmas breakfast might consist of a boiled hackin, a sweet haggis that was probably the mother of all British Christmas puddings. On Good Friday a dish called Fig Sewe, made by boiling dried figs with ale, diced bread, treacle and nutmeg consumed to honour their Saviour, since Cumbrians believed he was crucified on a cross made of fig wood. An internationally renowned food historian, Day will guide us through the traditional foods of the Lakeland Year.

Date 2 - 4pm
Sun 1 Dec 2024



Tutor Ivan Day

Cost £18 each or £32 for 2 including refreshments

Course code D2412ID

NORTH WEST FRONTIER OF ROME

For four centuries, the Great Wall of Hadrian marked the North West Frontier of Rome, an empire so vast the south east frontier rested on the Euphrates. Even today, the mighty stride of the Wall as it marches along the summit of the Whin Sill constitutes Rome's grandest, most ambitious and enduring military monument. This course will explore why, how and by whom the Wall was built, and consider the roles it played locally, culturally and politically. We will look at the garrisons that manned it, the communities and people who lived and traded in its shadow, left their funerary monuments and their DNA behind them – our common cultural inheritance. Finally, we'll look at the Wall's rebirth as a World Heritage Site, the art and literature it has inspired and continues to inspire.



Date Tue 3 Dec to
Fri 6 Dec 2024

Tutor John Sadler

Cost Residential: £435
Non-residential: £310

Course code H2412JS

MONO-PRINTED SLAB POTS AND BOXES

An introduction to mono-printing coloured slips onto clay slabs. These pre-decorated slabs can then be used to make many types of slab built pottery with edge to edge decoration. The technique enables a wide range of styles, from expansive gestural mark making to carefully constructed paper resist. Students will complete decorated pieces to the leather hard stage. These will be fired and glazed by the tutor at Higham and then collected or sent on to students.



Date Fri 6 Dec to
Sun 8 Dec 2024

Tutor Chris Barnes

Cost Residential: £305
Non-residential: £220
(materials £40 from tutor)

Course code C2412CB



YOGA AND CIRCLE DANCE



Yoga and circle dance complement each other beautifully. Yoga practice - postures, breathing techniques, relaxation - will alternate with sessions of circle dancing, which is drawn from many countries and cultures, celebrates the seasons, is enjoyable, easy to learn and does not require a partner.

Date Fri 6 Dec to
Mon 9 Dec 2024

Tutors Gill Hunter and
Anne-Lise Kryger

Cost Residential: £430
Non-residential: £305

Course code F2412GH

RUSKIN LACE



A Lake District speciality since the late nineteenth century, Ruskin lace was made from hand-spun and woven linen produced by cottagers around Coniston. Karen is a leading exponent of this heritage craft who brings extensive knowledge to support and guide you in traditional needlepoint lace techniques for drawn thread and cut linen work to create beautiful geometric designs. This course is suitable for both the beginner and experienced needleworkers. If required, a starter pack (£15) is available to purchase from the tutor. Another course follows.

Date Fri 6 Dec to
Sun 8 Dec 2024

Tutor Karen Quickfall

Cost Residential: £305
Non-residential: £220

Course code C2412KQ1



Date Sun 8 Dec to
Tue 10 Dec 2024

Tutor Karen Quickfall

Cost Residential: £305
Non-residential: £220

Course code C2412KQ2

PILATES AND CIRCLE DANCE



Pilates and circle dance complement each other beautifully. Sessions of body-control pilates (a safe, effective form of body conditioning that works by strengthening the core postural muscles, re-balancing the body and bringing it back to correct alignment) - will alternate with sessions of circle dancing, which is drawn from many countries and cultures, celebrates the seasons, is enjoyable, easy to learn and does not require a partner.

Date Mon 9 Dec to
Thu 12 Dec 2024

Tutors Susie Gale and
Anne-Lise Kryger

Cost Residential: £430
Non-residential: £305

Course code F2412SG

WINTER BIRDS

Imagine spectacular gatherings of barnacle and pink-footed geese against a backdrop of a winter sunset and the massed pipings of thousands of waders as they swirl in the sky. Our Solway and Cumbrian coast is wintering ground for many species prior to their northward migration, hosting an exciting array of raptors. Hone your identification skills! Incl. field trips by minibus during which there are stops for short walks (maximum daily amount 4 km), on well-formed paths but with occasional gentle gradients and uneven sections.



Date Mon 9 Dec to
9am Fri 13 Dec 2024

Tutor Keith Offord

Cost Residential: £525
Non-residential: £375
(incl. field trips)

Course code N2412KO



DAY COURSE

INTRODUCTION TO UPHOLSTERY (2)

This workshop looks at furniture preparation - condition check, measuring for fabric, stripping, small repairs, woodworm, cleaning and inspecting filling to see what can be reused or what to replace it with. For beginners, the workshop is designed to equip you with basic skills and knowledge of upholstery. This is the second in a series of day courses in October, December and February. It can be attended on its own or alongside one or both others to work on a larger project or different projects. Each day needs to be booked separately.

Date 10am - 4pm
Mon 9 Dec 2024



Tutor Cathy Newbery

Cost £95 including lunch

Course code D2412CN

DECORATIVE PAPER MAKING

Students will produce a range of decorated papers using techniques such as pigmented paste, suminagashi (Japanese ink marbling) and traditional paper marbling on a 'thickened' water surface. The samples produced will then be used to decorate a range of binding structures including Japanese stab, concertina and multi-section binding. Techniques used are very traditional and hands-on using basic materials; the finishes, however, can be very sophisticated, vibrant and colourful. Suitable for beginners.



Date Tue 10 Dec to
Fri 13 Dec 2024

Tutor Tom McEwan

Cost Residential: £420
Non-residential: £295

Course code C2412TM

CURIOSITIES OF THE ENGLISH LANGUAGE

This course will focus on some curious and intriguing aspects of the English language. Why has English the richest vocabulary in the world? Why is English spelling so infuriating? What do place names tell us? Why does the language change, and who makes the rules? Join this course to find answers to these and other questions about our fascinating language.



Date Wed 11 Dec to
Fri 13 Dec 2024

Tutor Bill Jones

Cost Residential: £310
Non-residential: £225

Course code L2412BJ

DAY COURSE TRY FOR A DAY: BOTANICAL ART

This informal and relaxed workshop is a gentle introduction to the delights of drawing from nature. You will spend the morning building confidence while closely observing individual flower petals, leaves and berries and practising watercolour techniques. The afternoon is spent painting flowers and plants from the beautiful gardens here at Higham. Everyone welcome, no experience needed. You may surprise yourself. All materials supplied, including a sketchbook to take home and keep on painting.

Date 10am - 5pm
Fri 13 Dec 2024

Tutor Lis Bramwell

Cost £100 (incl. lunch and materials)

Course code D2412LB

WITHOUT FROM WITHIN

Using the wonderful setting of Higham Hall itself, this course explores the depiction of interior and exterior space; 'looking through windows and entrances' with inspiration from French artists Bonnard and Vuillard along with modern and contemporary influences. A painting course for those with some experience.

Date Fri 13 Dec to
Tue 17 Dec 2024

Tutor Ceri Allen

Cost Residential: £520
Non-residential: £380

Course code A2412CA



FRANCES IN RESIDENCE - FOCUS ON GESSO

Bring your own sketches and projects. Be shown different ways to use gesso to either build a whole picture or wash it with colour, exploring the rich possibilities of texture possible with this technique. This course is suitable for beginners or experienced artists who would like to experiment in company. Demonstrations of these methods for you to sample the ways of working for yourselves.



Date Tue 17 Dec to
Thu 19 Dec 2024

Tutor Frances Winder

Cost Residential: £305
Non-residential: £220

Course code A2412FW

CAROLS FOR EVERYONE

Carols and Christmas songs for everyone, from every background and every level of experience. We will explore music from all over the world, both known and less familiar, look at vocal basics, reading music and making music together.



Date Tue 17 Dec to
Thu 19 Dec 2024

Tutor Deborah Catterall

Cost Residential: £305
Non-residential: £220

Course code M2412DC

**SILVER JEWELLERY: BRACELETS, RINGS AND PENDANTS**

This course is aimed at beginners and intermediate level students. Students will make three beautiful pieces of silver jewellery - a bracelet and two rings. Summer and Winter course projects differ.

Date Fri 3 Jan to
Mon 6 Jan 2025

Tutor Rebecca Halstead

Cost Residential: £410
Non-residential: £285
(materials available from tutor £48)

Course code C2501RH

SONGWRITING SESSIONS WITH CHRIS MCSHANE

Chris will cover all the main aspects of songwriting technique with lots of fun exercises and the opportunity for students to develop their skills in a relaxed atmosphere. The course is open to singers, writers and musicians of all standards. There will be opportunities for students to work on their own and in groups. Topics covered will include lyric writing, song structure, basic music theory and how to develop musical styles. We will record each student's song at the end of the course so that they have an example of their work. Chris will also help students to create a lead sheet of their song with musical notation and chord symbols.



Date Fri 3 Jan to
Mon 6 Jan 2025

Tutor Chris McShane

Cost Residential: £410
Non-residential: £285

Course code M2501CM

EXPLORE EMBROIDERY (WINTER SPECIAL 3 NIGHTS FOR 2)



Come and explore hand embroidery. This course is suitable for all levels of embroiderers, from those brand new to embroidery to the more experienced stitcher. You can choose from one of the kits available, good for an introduction into embroidery or from a selection of embroideries on display using your own fabric and threads. You can also bring along your own project to stitch and get helpful advice and guidance throughout the course. 1st of 3 courses with Angie - each with the 3 for 2 special offer!

Date Fri 3 Jan to
Mon 6 Jan 2025

Tutor Angie Burt

Cost Residential: £305
Non-residential: £220

Course code C2501AB1



INSPIRED BY ST IVES



A new and delightful course working in the studio from imagery and still life arrangements. Bring along your images from visits to the coast and interpret them with inspiration from St Ives artists Ben and Winifred Nicholson, Peter Lanyon and Wilhelmina Barns-Graham amongst many others. This is a course for those with some painting experience.

Date Mon 6 Jan to Thu 9
Jan 2025

Tutor Ceri Allen

Cost Residential: £410
Non-residential: £285

Course code A2501CA

PORTRAITURE (CLOTHED LIVE MODELS)



One of the essential skill sets for artists, during this course we will focus on the clothed model and will include working from live sitters. You will be guided to experiment towards a freer, yet meaningful drawing style. You will expand, refine and challenge your drawing practice whilst reinforcing all the essential fundamentals with in a small and supportive group.

Date Mon 6 Jan to
Thu 9 Jan 2025

Tutor Catherine
MacDiarmid

Cost Residential: £430
Non-residential: £305

Course code A2501C

**EXPLORE
EMBROIDERY
(WINTER SPECIAL 3
NIGHTS FOR 2)**



A friendly course for all, from new to the more experienced. Bring your own project for helpful guidance or choose a project available from the tutor. 2nd of 3 successive courses with Angie - each with the 3 for 2 special offer!

Date Mon 6 Jan to
Thu 9 Jan 2025

Tutor Angie Burt

Cost Residential: £305
Non-residential: £220

Course code C2501AB2

Date Thu 9 Jan to
Sun 12 Jan 2025

Tutor Angie Burt

Cost Residential: £305
Non-residential: £220

Course code C2501AB3



**RICHARD STRAUSS:
TONE POEMS**



In the 1890s Richard Strauss dazzled the musical world with a series of celebrated tone poems. From Don Juan to Till Eulenspiegel, Also Sprach Zarathustra (2001 Space Odyssey) to the Alpine Symphony and from Death & Transfiguration to Ein Heldenleben we will feast our ears on his rich orchestral palette and his depiction of character and narrative in exciting music.

Date Fri 10 Jan to
Sun 12 Jan 2025

Tutor Ian France

Cost Residential: £305
Non-residential: £220

Course code M2501IF

UPHOLSTERY WEEKEND

Hands-on! Bring chair, stool, ottoman, headboard... Build up from scratch or just re-cover, tackle interior paddings with traditional or modern techniques. Please contact Cathy prior to your course to discuss your project needs. Contact information available from the Higham office.

Date Fri 10 Jan to
Sun 12 Jan 2025

Tutor Cathy Newbery

Cost Residential: £305
Non-residential: £220

Course code C2501CN

SUNDAY LECTURE

‘A SHADOW OF MAGNITUDE’

This lecture will document and consider the historical presence of people of African ancestry in Cumbria between the seventeenth and nineteenth centuries. Building on the foundational research of regional archivists and historians, the lecture will dwell on the evidence that survives of these peoples’ lives and explain what that evidence reveals about Cumbria’s social makeup and longstanding links with other parts of the world.

Date 2pm – 4pm
Sun 12 Jan 2025



Tutor Christopher
Donaldson

Cost £18 each or £32 for
2 including refreshments

Course code D2501CD



DAY COURSE

INTRODUCTION TO BRYOPHYTES (MOSSES AND LIVERWORTS)

An introductory course in which we will look at identifying some of the most common bryophytes. We will look at the main features that help with identification, collect some species from the gardens at Higham and practise using a key. We will use hand lenses and microscopes to appreciate the details of these tiny plants and get a better look at their defining features.

Date 10am – 5pm
Mon 13 Jan 2025

Tutor Clare Shaw

Cost £120 including lunch

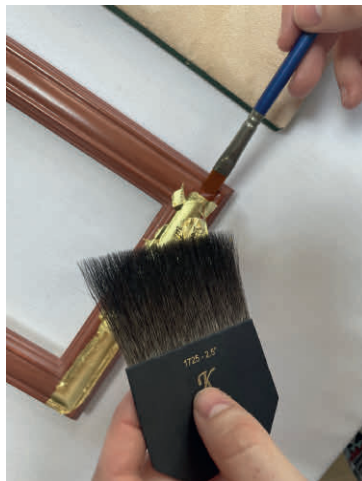
Course code D2501CS



HERITAGE OIL AND WATER GILDING



This is a practical course aimed at beginners, although more experienced students are welcome. Over four days, you will master the art of traditional water and oil gilding. Using skilled processes, you will prepare a picture frame, picture rail and decorative objects for gilding with 23.75ct gold leaf, as well as learning the artistic skill of antiquing them. Included in the course is a field trip to gain first-hand experience regarding historical gilded frames. When you have completed this course, you will have the skills to make and prepare gesso using a traditional recipe and how to lay it smoothly as well as the techniques to prepare, gild and burnish gold leaf on any bare wood surface. One of the things you will gild is a letter of the alphabet. Students need to inform us when they book which letter they would like to gild.



Date Mon 13 Jan to
Thu 16 Jan 2025

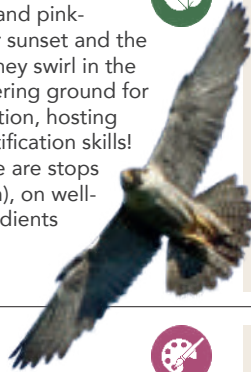
Tutor Amelia Bedson

Cost Residential: £590
Non-residential: £465
(incl. materials at £150
and field trip)

Course code C2501AB4

WINTER BIRDS

Imagine spectacular gatherings of barnacle and pink-footed geese against a backdrop of a winter sunset and the massed pipings of thousands of waders as they swirl in the sky. Our Solway and Cumbrian coast is wintering ground for many species prior to their northward migration, hosting an exciting array of raptors. Hone your identification skills! Incl. field trips by minibus during which there are stops for short walks (maximum daily amount 4 km), on well-formed paths but with occasional gentle gradients and uneven sections.



Date Mon 13 Jan to
9am Fri 17 Jan 2025

Tutor Keith Offord

Cost Residential: £525
Non-residential: £375

Course code N2501KO

**SKETCHBOOKS FAST & LOOSE:
LINE AND TONE**

Artful games to get creative inspiration flowing. Learn new ways of seeing objects, recording swift impressions using your sketchbook, so this becomes an essential aid to design and art projects. Use black-and-white and monotone to record what you see, without feeling that it needs to be a photographically accurate representation. Sketchbooks have been used by different artists in many different ways and remind us of sensation and feeling. Relax and enjoy getting back to the basics of line and tone for successful winter sketching.



Date Mon 13 Jan to
Thu 16 Jan 2025

Tutor Pam Grant

Cost Residential: £410
Non-residential: £285

Course code A2501PG



**LAURENCE PERKINS:
VIENNESE MUSIC**



All applications to be made initially through Laurence to ascertain ensemble line-up.
www.laurenceperkins.com/wind-serenades

Date Mon 13 Jan to Thu
16 Jan 2025

Tutor Laurence Perkins

Cost Residential: £590
Non-residential: £450

Course code M2501LP

SPECIAL EVENT

**A NEW YEAR VIENNESE CONCERT
BY CANDLELIGHT**

A varied programme of Viennese music (Haydn, Schubert, Mozart, Beethoven and others) performed by candlelight
Laurence Perkins and friends.



Date 8pm – 9:30pm
Wed 15 Jan 2025



Cost tickets £18 or £32 for 2. Includes a glass of wine in the bar afterwards. Proceeds towards the Higham building appeal.

Event code D2501LP



GET WEAVING!

Explore the use of colour and texture. Dress a loom. Understand how to read pattern draft. Suitable for both absolute beginners and developing weavers.



Date Thu 16 Jan to
Sun 19 Jan 2025

Tutor Jan Beadle

Cost Residential: £410
Non-residential: £285
(Yarns £15 available to purchase from tutor)

Course code C2501JB

RUSKIN LACE

A Lake District speciality since the late nineteenth century, Ruskin lace was made from hand-spun and woven linen produced by cottagers around Coniston. Karen is a leading exponent of this heritage craft who brings extensive knowledge to support and guide you in traditional needlepoint lace techniques for drawn thread and cut linen work to create beautiful geometric designs. This course is suitable for both the beginner and experienced needleworkers. If required, a starter pack (£15) is available to purchase from the tutor.



Date Fri 17 Jan to
Sun 19 Jan 2025

Tutor Karen Quickfall

Cost Residential: £305
Non-residential: £220

Course code C2501KQ



ENAMELLING WEEKEND

Work on copper, silver, or steel; make enamelled jewellery, small tiles, or panels. Skills include: enamel application, kiln use, control and safety, foils, stencils, sgraffito and other techniques as desired. Absolute beginners welcome. Materials available to purchase from Tilly (£5-£20 dependent upon project).



Date Fri 17 Jan to
Sun 19 Jan 2025

Tutor Tilly Wilkinson

Cost Residential: £315
Non-residential: £230

Course code C2501TW1

BOTANICAL WATERCOLOUR PAINTING

The flowers in the garden may be gone, but pot plants, florists' blooms and even fruit, nuts and vegetables provide us with a range of subjects to study in watercolour. Individual help and frequent demonstrations will help both experienced and beginners to produce an accurate portrayal of the chosen subject.



Date Sun 19 Jan to
Wed 22 Jan 2025

Tutor Marion Wilson SBA

Cost Residential: £410
Non-residential: £285

Course code A2501MW

SING WITH OTHERS: YES, YOU CAN!

A chance to sing with others, even if this is your first time. This course is a great confidence builder, particularly if you have been told that you can't sing or if you can but would like more experience. A very friendly and happy course, where we will explore the skills of ensemble singing and find out more about how to sing comfortably!



Date Sun 19 Jan to Wed
22 Jan 2025

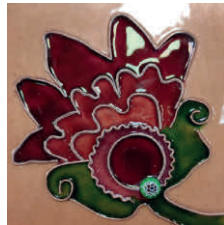
Tutor Deborah Catterall

Cost Residential: £410
Non-residential: £285

Course code M2501DC

ENAMELLING WEEK

Four full days for time-consuming techniques (painted enamels, advanced cloisonne, plique à jour). Work on copper, silver, or pre-prepared steel; making enamel jewellery, small panels, bowls, or kiln-fired beads. Some experimental techniques may be tried; such as raku firing, solar Riso screens and marbled enamels. Beginners or more experienced. Materials available to purchase from Tilly (£5-£30 dependent upon project).



Date Sun 19 Jan to
Fri 24 Jan 2025

Tutor Tilly Wilkinson

Cost Residential: £660
Non-residential: £470

Course code C2501TW2

ON NOT KNOWING: HOW ARTISTS THINK

Join our principal Lizzie visiting local artists in their studios to explore contemporary artists' practices and their wider cultural and art historical contexts. We will talk to artists about their work and working methods in their workplaces, and consider what it means to be an artist today. Look forward to some wide-ranging, lively discussion on the role and value of art today.



Date Wed 22 Jan to
Fri 24 Jan 2025

Tutor Dr Elizabeth Fisher

Cost Residential: £325
Non-residential: £240
(incl. field trips)

Course code A2501LF

TEXTS, TRADITIONS & TRANSLATIONS: THE CREATION OF THE BIBLE

As with all great literature the story of how the Bible emerged is a fascinating one. Why were some books included and others failed to make the cut? Why do Catholics and Orthodox have more books in their canon than Jews and Protestants? What happens when you translate a text out of its original language, and why do some translations like the Latin Vulgate and King James Bible carry such weight? Finally, once a text has been written and translated it needs to be interpreted - and that too is a complex process.



Date Fri 24 Jan to
Sun 26 Jan 2025

Tutor Michael Tunnicliffe

Cost Residential: £310
Non-residential: £225

Course code H2501MT

INTRODUCTION TO MEDIEVAL MANUSCRIPT ILLUMINATION

Use skills passed down by medieval craftspeople to create small designs using 23 carat gold and pigments. No drawing experience is necessary. A selection of medieval and contemporary designs are available to trace, including illuminated letters, but creativity is welcomed.

Toni's MORE CHALLENGING TECHNIQUES follows.



Date Fri 24 Jan to
Sun 26 Jan 2025

Tutor Toni Watts

Cost Residential: £325
Non-residential: £240
(incl. materials)

Course code: A2501TW1



MANUSCRIPT ILLUMINATION: MORE CHALLENGING TECHNIQUES

This course is only suitable for those with experience in laying manuscript gesso and using loose leaf gold. During the workshop you will work on three small projects, one which will combine flat and raised gilding, one which combines different colours or textures of gold (with the option to add tooling) and one where you will use shell gold and watercolour paint. There will be a choice of two designs for each project. Not for beginners.



Date Sun 26 Jan to
Tue 28 Jan 2025

Tutor Toni Watts

Cost Residential: £325
Non-residential: £240
(incl. all materials)

Course code A2501TW2

ALAN BARNES JAZZ MASTER CLASS



Develop your jazz playing with award winning saxophonist/clarinettist Alan Barnes. A relaxed look at jazz theory for instrumentalists with lots of opportunities to play and practise together. You need to be able to read music, understand chords and preferably have some rehearsal band experience.

Date Sun 26 Jan to
Thu 30 Jan 2025

Tutor Alan Barnes

Cost Residential: £580
Non-residential: £430

Course code M2501AB

BOTANICAL ART IN COLOURED PENCILS: DEPICTING HOUSE PLANTS



In the winter months, when botanical choices are limited, house plants can provide some interesting challenges for the botanical artist. They have undergone a recent revival in popularity and there are lots of interesting and often unusual types to choose from. Flowers can be optional - or exotic - but colour may also be a feature of variegated or strongly patterned leaves. Even plain green leaves may have interesting shapes, structure and surfaces and then there are succulents with their wonderful pattern formations, subtle colours, often with 'bloom' or high shine surfaces so there will be plenty of choice!

Date Mon 27 Jan to
Sun 2 Feb 2025

Tutor Susan
Christopher-Coulson

Date Residential: £735
Non-residential: £540
(incl. optional minibus trip)

Course code A2501SCC

DRAWING THE FIGURE WITHOUT A MODEL



If you have ever wanted to be able to draw figures without always having to rely on reference material then this course is a great introduction. Jason Skill, your tutor, taught life drawing for many years and found that basic construction drawing was the key component that helped students become more confident and capable at drawing the model. Construction drawing concentrates on the making of forms rather than the surface detail. So knowing ways to construct a hand inevitably helped students draw a hand from life more effectively because they could more easily visualise the forms in three dimensions.

Date Tue 28 Jan to
Thu 30 Jan 2025

Tutor Jason Skill

Cost Residential: £305
Non-residential: £220

Course code A2501JS

BRIGHT COLOURS IN A DARK MONTH



Back by popular demand, this short painting course with Robert will focus on getting to grips with the creative potential of Derwent's InkTense blocks on Canson cotton rich watercolour paper (all materials provided). This highly versatile new painting medium allows for bold mark-making, glazing and layering - perfect for achieving expressive compositions. We will take a semi-abstract approach to landscape subjects of your own choice - not necessarily Lake District views - so bring your own photographs, sketches and so on to work from. Unsuitable for beginners as the techniques taught may be too advanced.

Date Thu 30 Jan to
Sun 2 Feb 2025

Tutor Robert Dutton

Cost Residential: £455
Non-residential: £330

Course code A2501RD

JUST FOR GIRLS - DA DOO RON RON!

A fun weekend exploring songs by girl groups over the decades and iconic female singers. Two or three part harmony depending on level of singers. Some choir experience helpful.



Date Fri 31 Jan to
Sun 2 Feb 2025

Tutor Chris Hale

Cost Residential: £305
Non-residential: £220

Course code M2501CH

OUT OF THE DARK: POETRY PAINT PROCESS

This is an experimental creative course aimed at anyone interested in the relationship between words and images. Making the most of the long nights at this time of year, we will explore how we see differently in the dark, using experimental techniques to draw images out of darkness and find texts which shine a light on what we discover there. In reflective practical sessions we'll use words and painting to think about how moonlight, twilight, half-light and gloaming alter perspectives and open up the imagination.



Date Sun 2 Feb to
Tue 4 Feb 2025

Tutors Susan Allen &
Alison Critchlow

Cost Residential: £365
Non-residential: £280
(materials provided)

Course code A2502AC



GET WEAVING!

Explore the use of colour and texture. Dress a loom. Understand how to read pattern draft. Suitable for both absolute beginners and developing weavers.



Date Sun 2 Feb to
Wed 5 Feb 2025

Tutor Jan Beadle

Cost Residential: £410
Non-residential: £285
(Yarns £15 available to purchase from tutor)

Course code C2502JB



PRINTMAKING WORKSHOP



Explore a wide range of techniques: woodcut (cutting in plankwood); engraving (on endgrain hardwood or plastic); drypoint (drawing on metal with steel); and etching, (using acid to etch on a zinc plate). Make handmade prints to your own design. Beginners or experienced.

Date Mon 3 Feb to
Fri 7 Feb 2025

Tutor Peter Collins

Cost Residential: £520
Non-residential: £380

Course code C2502PC

CHINESE BRUSH PAINTING FOR THE TERRIFIED



Come and explore the relaxing free flowing brush strokes of this ancient artform. You will be surprised at how quickly a good painting can be formed. Traditional and modern topics covered. Lots of support for absolute beginners and interesting projects for the more experienced. Materials will be provided.

Date Tue 4 Feb to
Fri 7 Feb 2025

Tutor Peta Allingham

Cost Residential: £430
Non-residential: £305 (inc. materials)

Course code A2502PA

ITALIAN LANGUAGE AND CULTURAL RETREAT



Do you love Italy? Are you looking to improve your Italian conversation and immerse yourself in Italian culture? Join Antonella in her 2025 retreat at Higham Hall. The retreat will balance structured group activities with plenty of free time to explore Italian film, literature and music. You will be encouraged and supported to build confidence and improve your Italian speaking skills through wide-ranging conversation and simple games. For people who have a good understanding of written Italian but would like to develop their listening and conversational skills. If you are unsure if this event is appropriate for your level of fluency, please contact the tutor at ladolcelingua@gmail.com.

Date Wed 5 Feb to
Fri 7 Feb 2025

Tutor Antonella Rea

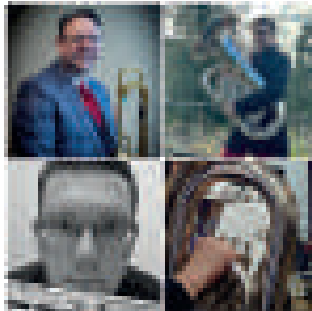
Cost Residential: £305
Non-residential: £220

Course code L2502AR

BRASS BAND WEEKEND



A serious yet relaxed weekend for brass band players to rehearse and perform popular, and perhaps lesser-known, brass band repertoire. There will be both whole-band and sectional rehearsals. All prospective players must contact Martyn at martyngrisdale@gmail.com before enrolling to ascertain level, instrument(s) and suitability.



Date Fri 7 Feb to
Sun 9 Feb 2025

Tutor Martyn Grisdale (course leader) with Andy Kershaw and Dr Brett Baker

Cost Residential: £330
Non-residential: £245

Course code M2502MG

DAY COURSE**DRAWING IN COLOUR**

A course exploring the great variety of different coloured drawing materials and techniques used - with inspiration from work by artists both past and present.

Date 10am – 4pm
Sat 8 Feb 2025



Tutor Ceri Allen

Cost £95 including lunch

Course code D2502CA

STRING CHAMBER MUSIC WORKSHOP

A course for preformed string chamber music groups, working at self programmed repertoire. Richard Muncey (viola) and Heather Bills (cello) will join the tutoring team.



Date Sun 9 Feb to
Tue 11 Feb 2025

Tutor Louise Latham

Cost Residential: £330
Non-residential: £245

Course code M2502LL

DAY COURSE**INTRODUCTION TO UPHOLSTERY (3)**

Sprung seat/dining chair/larger stool. Tackle one of these more challenging pieces and increase your technical range. For beginners, working through techniques to equip you with basic skills and knowledge of upholstery. This is the third in a series of day courses in October, December and February. It can be attended on its own or alongside one or both others to work on a larger project or different projects. Each day needs to be booked separately.

Date Mon 10 Feb
2025



Tutor Cathy Newbery

Cost £95 including lunch

Course code D2502CN

PALETTE KNIFE EXPERIMENTS

Learn to use the palette knife as part of your mark-making repertoire. Have fun applying paint without a brush! Using drag, scrape and spread techniques. Explore the sculptural qualities of paint playing with textures and layers and mixing colours directly on the surface of the canvas. This humble artist's tool can unlock many new possibilities for abstract and chance effects. All materials provided.



Date Tue 11 Feb to Thu
13 Feb 2025

Tutor Coral Grace

Cost Residential: £325
Non-residential: £240
(incl. materials)

Course code A2502CG

BEGINNERS DRESSMAKING WITH LIS BINNS

For anyone with little or no knowledge of dressmaking or for those with little confidence, make an item of clothing of your own choice using your own fabric. The tutor will show you how to cut out, how to interpret the instructions, and what the instructions don't tell you. You will also learn how to insert a zip, make a buttonhole and how to finish a hem.

Date Tue 11 Feb to
Fri 14 Feb 2025

Tutor Lis Binns

Cost Residential: £410
Non-residential: £285

Course code C2502LB

PILATES & NORDIC WALKING

Nordic walking is the perfect accompaniment to pilates. Both disciplines focus on core engagement; learning the basics of pilates will enhance the practice of Nordic walking. Body control pilates is a safe, effective form of body conditioning that works by strengthening the core postural muscles, rebalancing the body and encouraging correct alignment. It is a fun way of building up cardio fitness without feeling the strain. Using special Nordic walking poles, which take over 80% of body weight, it enables the participant to walk without putting pressure on the bones; particularly good if there are hip or knee issues. Great for all ages. Poles provided.

Date Tue 11 Feb to
Fri 14 Feb 2025

Tutor Susie Gale

Cost Residential: £410
Non-residential: £285

Course code F2502SG

**A CREATIVE APPROACH TO LANDSCAPE
- USING ACRYLIC AND SOFT PASTELS**

Develop your approach to representing the experience of "being" in the landscape, rather than a faithful representation of what you see (although there is nothing wrong with that!). This course will introduce you to a variety of ways of breaking from a "traditional" approach and help you explore creative possibilities.

Date Thu 13 Feb to
Sun 16 Feb 2025

Tutor Alex
Jakob-Whitworth

Cost Residential: £410
Non-residential: £285

Course code A2502AJW

LACE AS YOU LIKE IT

Have you ever wondered about how lace is made? Would you like to learn this fascinating craft? All abilities are welcome, from complete beginner through to advanced. Want to try a lace type that you have not made before? Most of the many different lace types can be accommodated in the class. If you have a pattern or project that has been giving you difficulties, bring it along for constructive advice and/or instruction. The classes are all run in a friendly, positive and supportive atmosphere. Lacemaking equipment may be borrowed by prior arrangement.

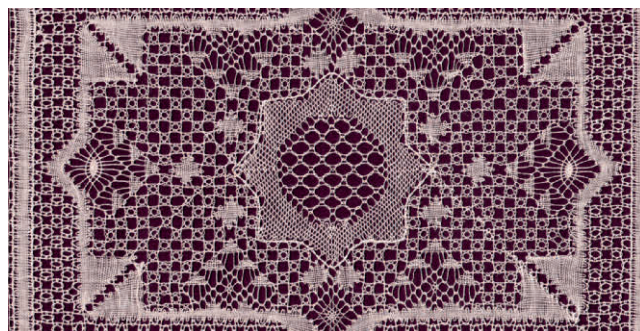


Date Fri 14 Feb to
Sun 16 Feb 2025

Tutor Jan Gardiner

Cost Residential: £305
Non-residential: £220

Course code C2502JG1



Date Sun 16 Feb to Tue
18 Feb 2025

Tutor Jan Gardiner

Cost Residential: £305
Non-residential: £220

Course code C2502JG2

WINTER YOGA RETREAT: TOWARDS A PERSONAL PRACTICE

Alongside the practical exercises and breathwork this course offers an opportunity to explore the benefits of Vini yoga, an accessible practice that is easily adapted to each individual's ability and need. All levels welcome.



Date Fri 14 Feb to
Sun 16 Feb 2025

Tutor Amanda Oakes

Cost Residential: £305
Non-residential: £220

Course code F2502AO

SUNDAY LECTURE

MEETINGS OF REMARKABLE MEN

The Langdale Valley, 1947 - an unlikely setting for a meeting between two of the most influential and toweringly important cultural figures of the twentieth century: the choreographer and movement pioneer Rudolf Laban, and the avant-garde artist Kurt Schwitters. Research into this meeting has thrown up fascinating questions not least about what they might have discussed, but also about what we know of the past and whose word can we believe? Join Dr Dick McCaw as he reflects on the challenges of historical research and larger-than-life personalities.

Date 2pm – 4pm
Sun 16 Feb 2025

Tutor Dick McCaw

Cost £18 each or £32 for
2 including refreshments

Course code D2502DM





WATERCOLOUR LANDSCAPES FOR BEGINNERS

Learn how to paint a simple but effective landscape including skies, hills, trees, hedgerows and other landscape features. This is suitable for beginners and for intermediate levels who want to brush up their technique. It is a taught course using step-by-step demonstrations and individual help is given throughout.



Date Sun 16 Feb to Tue
18 Feb 2025

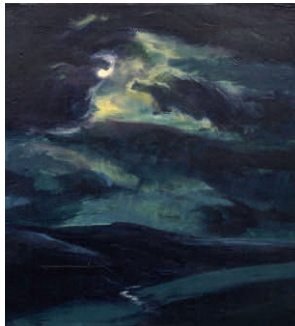
Tutor Jane Beech

Cost Residential: £325
Non-residential: £240
(incl. materials)

Course code A2502JB1

WINTER LANDSCAPE: SKETCHING AND PAINTING

Suitable for intermediate to advanced level. Explore the Lake District in winter when colour and shadow are at their most varied and dramatic. With demos, exercises and expert advice throughout, experience outdoor sketching trips (dress for the weather). Use mixed media and develop a studio project in the painting medium of your choice.



Date Tue 18 Feb to
Sun 23 Feb 2025

Tutor Lionel Playford

Cost Residential: £660
Non-residential: £470
(incl. field trips)

Course code A2502LP



DISCOVERING PEN AND INK

Create textures, tonal areas and decorative patterns in pen and ink, then combine them to create a finished drawing. With demos throughout and access to a variety of pens to experiment with, by the end you should be able to handle your materials with confidence.



Date Wed 19 Feb to Fri
21 Feb 2025

Tutor Jane Beech

Cost Residential: £305
Non-residential: £220

Course code A2502JB

**MODERN ROMANCE:
KURT SCHWITTERS IN THE LAKES**

Join our principal Lizzie to revisit her recent research on the late work of Kurt Schwitters, one of the most influential artists of the 20th century who spent his final years in the Lake District. During this brief but intensely productive time, and despite terrible ill health, Schwitters made over 300 works and embarked on what he called his 'life's work' in a barn in Langdale. Having started out with his roots in German Romanticism, he came full circle to the cradle of English Romanticism and left us a profoundly sensitive and nuanced meditation on the experience of exile, modernity and humanity's relationship to nature. Field trip will include up to 2 miles walking, occasionally on uneven ground.



Date Wed 19 Feb to Fri
21 Feb 2025

Tutor Dr Elizabeth Fisher

Cost Residential: £325
Non-residential: £240
(incl. field trip)

Course code H2502LF

**17TH & 18TH CENTURY CHAMBER
MUSIC WORKSHOP**

For pre-formed chamber groups (with or without singer) who should bring at least 4 pieces to work on which can be at varying stages of readiness. Work at 415 or 440Hz, with availability of one harpsichord playable at either pitch, plus Higham's transposable electric pianos. Tutors' recital on Saturday evening, with an informal participants' concert before lunch on Sunday.



Date Fri 21 Feb to Sun 23
Feb 2025

Tutors Katharine May and
Michael Sanderson

Cost Residential: £335
Non-residential: £250

Course code M2502KM

SPECIAL EVENT**A RECITAL BY EDEN BAROQUE**

To welcome Spring: expressive arias and upbeat instrumental music from the 17th & 18th centuries to put a positive spring in our collective steps. Programme includes music by Vivaldi, Rameau, Handel, Purcell and Telemann. Eden Baroque are: Michael Sanderson baritone, baroque violin & viola, and Katharine May harpsichord.

Date 8pm – 9:30pm
Sat 22 Feb 2025



Cost tickets £18 or £32
for 2. Includes a glass of
wine in the bar afterwards.
Proceeds towards the
Higham building appeal.

Event code D2502EB

NURTURE THROUGH NATURE WINTER YOGA RETREAT



Develop a sense of harmony and balance within yourself and the world in which you live. Suitable for all abilities. Using Ayurvedic wisdom, practicing 'pranayama' (breath control), 'asanas' (yoga postures) and through 'dhyana' (meditation) we will look to nature to nurture an inner state of peace and calm.

Date Sun 23 Feb to Tue
25 Feb 2025

Tutor Andrea Sanders-Fox

Cost Residential: £305
Non-residential: £220

Course code F2502ASF



THE AXE FACTOR: EXPLORING NEOLITHIC STONE AXE PRODUCTION, EXCHANGE AND COMMUNICATION



Six thousand years ago, the central Lake District was the focus of an intensive production process with a wide distribution network. A very particular type of stone, which outcropped around the highest fells, was much sought after by Neolithic communities. They quarried, shaped, and polished it to create valuable axe-heads that were traded throughout Britain and Ireland. Drawing on evidence from archaeology and ethnography, this course will explore some of the social aspects of this process, from the expeditions and possible rituals associated with stone extraction, to the reasons that this special material was so highly prized.

Date Sun 23 Feb to Tue
25 Feb 2025

Tutor Dr Kate Sharpe

Cost Residential: £325
Non-residential: £240
(incl. fieldtrip)

Course code H2502KS

DRAMATIC SEASCAPES, SKIES AND LANDSCAPES



Extend your artistic skills to create dramatic seascapes and skies using soft pastels. Demonstrations throughout, support for beginners and encouragement for the more experienced. Supportive one-to-one critique encouraging you to use this exciting and very versatile medium.

Date Mon 24 Feb to Thu
27 Feb 2025

Tutor Eileen Gardner

Cost Residential: £410
Non-residential: £285

Course code A2502EG



LAKE DISTRICT PHOTOGRAPHY



Capture the beauty of the Lake District through the lens of your camera with tuition from award-winning photographer Ben Bush. Visit different locations to learn and practice techniques that will enable you to take better pictures, then back in the classroom explore editing techniques to bring out the best in your images. Weather permitting, we will also have a go at capturing the beauty of the night sky with a night of astrophotography. For owners of DSLR cameras who wish to improve their photography skills. NB some off-road walking involved.

Date Tue 25 Feb to Fri 28 Feb 2025

Tutor Ben Bush

Cost Residential: £430
Non-residential: £305
(incl. fieldtrips)

Course code C2502BB

THE VICTORIANS



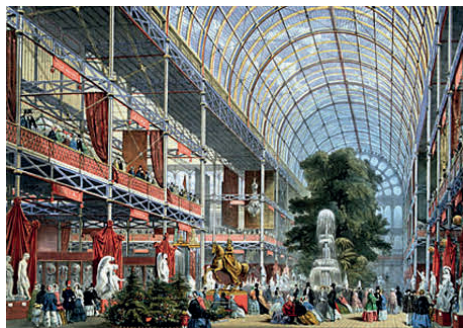
The Victorian Age in Britain was an age of great dynamism, creativity, complexity and change. Through a series of biographical talks on notable figures such as Florence Nightingale, Joseph Paxton, Catherine Booth, Thomas Cook & Son and Lord Curzon of Kedleston (Viceroy of India), this course will shine a light on themes as diverse as art, gardening, faith, Empire, poverty and social reform, health, death, the role of women and popular tourism.

Date Wed 26 Feb to Fri 28 Feb 2025

Tutor Daniel Wells

Cost Residential: £305
Non-residential: £220

Course code H2502DW



GEOLOGY OF SCOTLAND

Scotland has had an extremely eventful geological history for a country of its size, and this is reflected in its vast array of geological features. Come on this course and discover some of the oldest rocks on our planet. This is an entirely indoor course delivered through a series of illustrated talks. A large selection of Scottish geological specimens, maps and books will also be to hand for reference.



Date Thu 27 Feb to
Sun 2 Mar 2025

Tutor Dr Annette McGrath

Cost Residential: £420
Non-residential: £295

Course code N2502AM



EXPRESSIVE LANDSCAPES WITH SOFT PASTELS

For experienced artists wanting to become more expressive and confident with abstract techniques when using soft and hard pastels (with fixative) on different surfaces. Weather permitting, Higham's grounds will provide direct inspiration from nature alongside studio-based direction. Some of the taught techniques on this workshop are not for complete art beginners but pastel newbies are welcome. Specialist paper available from the tutor.



Date Thu 27 Feb to
Sun 2 Mar 2025

Tutor Robert Dutton

Cost Residential: £430
Non-residential: £305

Course code A2502RD

RUSKIN LACE

A Lake District speciality since the late nineteenth century, Ruskin lace was made from hand-spun and woven linen produced by cottagers around Coniston. Karen is a leading exponent of this heritage craft who brings extensive knowledge to support and guide you in traditional needlepoint lace techniques for drawn thread and cut linen work to create beautiful geometric designs. This course is suitable for both the beginner and experienced needleworkers. If required, a starter pack (£15) is available to purchase from the tutor.



Date Fri 28 Feb to
Sun 2 Mar 2025

Tutor Karen Quickfall

Cost Residential: £305
Non-residential: £220

Course code C2502KQ

STRING CHAMBER MUSIC WORKSHOP

A course for preformed string chamber music groups, working at self programmed repertoire. Cath Yates (violin/viola) and Heather Bills (cello) will join the tutoring team.



Date Sun 2 Mar to
Tue 4 Mar 2025

Tutor Louise Latham

Cost Residential: £330
Non-residential: £245

Course code M2503LL

COLLOGRAPH PRINTMAKING

Ideal as an introduction to experimental collagraph printing, or as a refresher. This course covers basic collagraph plate making techniques such as masking, layering, impressing and cutting into the surface. Understand how to create texture and line as well as tones from very dark to very light in your plates, using a combination of everyday materials like sticky tape and sand paper. Using linseed oil based printmaking inks, ink up your collagraph plates with increased confidence, combine intaglio and relief techniques and embrace colour. Relaxed and experimental, there is no such thing as a mistake! Leave with a mini portfolio of prints.



Date Tue 4 Mar to
Fri 7 Mar 2025

Tutor Emily Harvey

Cost Residential: £430
Non-residential: £305

Course code C2503EH

YOGA & WALKING: SPRING

A perfect mix of hatha yoga sessions (working on postures, breathing exercises and relaxation) and guided hill walks of up to 5 miles, sometimes over rough and steep ground (requiring a reasonable level of fitness) among the peaceful northern fells; the purpose of which is to leave the student supple, relaxed, refreshed and uplifted. The course is suitable for beginners and experienced students alike.



Date Tue 4 Mar to
Fri 7 Mar 2025

Tutors Gill and Alan
Hunter

Cost Residential: £430
Non-residential: £305

Course code F2503GH

WHITEWORK EMBROIDERY

On this course you will be shown stitching techniques that are all grouped under the heading of whitework. As the name suggests they are all stitched on white fabric with white threads. We will look at both Schwalm and Mountmellik embroidery techniques. Some embroidery experience is recommended for this course. For those wishing to spend longer working on their projects with Angie, an additional 2-night course on WHITEWORK EMBROIDERY runs 7-9 March.



Date Tue 4 Mar to
Fri 7 Mar 2025

Tutor Angie Burt

Cost Residential: £410
Non-residential: £285

Course code C2503AB1

RECORDERS: POST-BEGINNERS (GRADES 1-3)

Don't be scared to make mistakes - have fun and make music! A chance for those with a developing interest in recorder playing to progress their musicality in a gentle way with like-minded people under professional guidance.



Date Fri 7 Mar to
Sun 9 Mar 2025

Tutor Annemarie Klein

Cost Residential: £310
Non-residential: £230

Course code M2503AK

UPHOLSTERY WEEKEND

Hands-on! Bring chair, stool, ottoman, headboard... Build up from scratch or just re-cover, tackle interior paddings with traditional or modern techniques. Please contact Cathy prior to your course to discuss your project needs. Contact information available from the Higham office.



Date Fri 7 Mar to
Sun 9 Mar 2025

Tutor Cathy Newbery

Cost Residential: £305
Non-residential: £220

Course code C2503CN

WHITWORK EMBROIDERY

On this course you will be shown stitching techniques that are all grouped under the heading of whitework. As the name suggests they are all stitched on white fabric with white threads. We will look at both Schwalm and Mountmellik embroidery techniques. Some embroidery experience is recommended for this course.



Date Fri 7 Mar to
Sun 9 Mar 2025

Tutor Angie Burt

Cost Residential: £305
Non-residential: £220

Course code C2503AB2

INSPIRED BY BLOOMSBURY

A joyful painting course with inspiration from work by artists of the Bloomsbury Group, our very own English Post Impressionists! Work from set-ups in the studio and use the interior spaces of Higham Hall to explore the ideas behind their painting process and develop your own work using theirs as a starting point.



Date Sun 9 Mar to
Wed 12 Mar 2025

Tutor Ceri Allen

Cost Residential: £410
Non-residential: £285

Course code A2503CA

ADVANCED WOODWIND ENSEMBLES

A course for wind players from Grade 8 to Diploma, working in detail on wind chamber repertoire for large and smaller ensembles. There will be an informal concert on the morning of the last day. All applications to be made initially through Laurence to ascertain ensemble line-up. www.laurenceperkins.com/wind-serenades.

We can pick up at 5pm from Penrith Rail Station (+£40) BY PRIOR ARRANGEMENT ON PAYING BALANCE.



Date Sun 9 Mar to
Fri 14 Mar 2025

Tutor Laurence Perkins

Cost Residential: £770
Non-residential: £580

Course code M2503LP

BOOKBINDING: SPRINGBACK BINDING MODEL

A chance to make this amazing book structure - something that should be tackled at least once in a lifetime. The historical development of the account book was originally patented in Great Britain in 1799. As a style the springback is firmly rooted in the 'trade' binding tradition; it's robustness and ability to lie flat and open for extended periods of time make it ideal for guest books, lectern bibles, home accounts, etc. On this course we will be making a leather or suede quarter bound model with vellum tips and decorative paper sidings. A marvellous example of ultimate bookbinding engineering.



Date Thu 13 Mar to
Sun 16 Mar 2025

Tutor Doug Mitchell

Cost Residential: £410
Non-residential: £285

Course code C2503DM



SHAKESPEARE'S CONTEMPORARIES: THOMAS KYD'S 'THE SPANISH TRAGEDY'

With its angry ghost, villains, tragic heroine, grieving fathers, murders and madness, The Spanish Tragedy was the most popular and well-known revenge tragedy until Hamlet, influencing a whole generation of later playwrights. Join us to explore one of the most exciting plays of the early Elizabethan period.



Date Fri 14 Mar to
Sun 16 Mar 2025

Tutor Clare Smout

Cost Residential: £305
Non-residential: £220

Course code L2503CS

COLOURED PENCIL WORKSHOP

For beginners and improvers. Bring your own photographs of your pet, other animals, birds, landscape, or objects. Learn about the different ways you can use pencil, layering, blending, removing colour to create texture and depth. Bring your own good quality coloured pencils (the tutor will be using Derwent Inkntense), together with an A3 size folder for your completed work. Paper and other materials provided.



Date Fri 14 Mar to
Mon 17 Mar 2025



Tutor Paul Holmes

Cost Residential: £430
Non-residential: £305
(Incl. all materials except pencils)

Course code A2503PH1

SUNDAY LECTURE**THE WORLD OF THEATRE IN SHAKESPEARE'S TIME**

What was the theatre world like in Shakespeare's time? How did this context affect the form and content of his plays and those of his contemporaries? Clare explores the impact of the theatre buildings, acting companies, personalities and audiences of Elizabethan & Jacobean London, together with the regulations and censorship to which they were subject, and the practical and financial journey from the commissioning of a play to its performance.

Date 2pm – 4pm
Sun 16 Mar 2025



Tutor Clare Smout

Cost tickets £18 each
or £32 for 2 including
refreshments.

Course code D2503CS

PIANO WORKSHOP

A performance-based workshop where up to 10 players of Grade 7 standard and above prepare a short recital of between 15-20 minutes to play to the other participants. If possible, please bring along extra copies of the works being performed for the other players. John will give constructive suggestions for improving aspects of interpretation, technique, and performance. All is given in a friendly, supportive and non-competitive atmosphere with many opportunities for group discussion. There will be a joint recital on the final morning. Non-performing listeners are also welcome.



Date Sun 16 Mar to
Tue 18 Mar 2025

Tutor John Gough

Cost Residential: £320
Non-residential: £235

Course code M2503JG

LAKES, RIVERS AND SPRING WOODLANDS - PAINTING NATURE WITH ACRYLICS

A taught course with step-by-step instruction to produce two beautiful paintings featuring lakes/rivers and spring woodlands. We will use acrylic paints, brushes and any other painting tools that you wish to bring. Learn to employ a range of techniques to achieve realism, impressionistic techniques and coherent tonal qualities, pushing the boundaries of the acrylic medium.



Date Sun 16 Mar to
Wed 19 Mar 2025

Tutor Kara Strachan

Cost Residential: £410
Non-residential: £285

Course code A2503KS

OIL PASTELS

Suitable for beginners and improvers. Oil pastels are a beautiful and versatile medium to use, whether for a quick sketch or a finished painting for exhibition. The rich, pure colour of oil pastels can be applied with a myriad of techniques; some we will practice, such as laying on glazes of colour, blending, impasto and sgraffito techniques to create texture and depth. Others we will discuss for you to try at home or in future workshops. Loads of tips, suggestions and recommendations along the way from Paul. Bring along your own photographs or sketch books which we can use to develop a finished piece of art, and don't forget an apron or old shirt (to protect your clothes) and an A3 size folder to carry your completed work home.



Date Mon 17 Mar to
Wed 19 Mar 2025

Tutor Paul Holmes

Cost Residential: £305
Non-residential: £220

Course code A2503PH2



FRANCES IN RESIDENCE - FOCUS ON COLOUR EXPERIMENTS

Explore colour dynamics, using strong and vibrant colour, tonal contrasts and subtle colour to express mood and harmony. This course will be suitable for beginners who would like to learn about colour dynamics but is also good for people seeking to push their work to new levels. Work alongside Frances who will be developing her own work and considering the expressive quality of colour and mood.

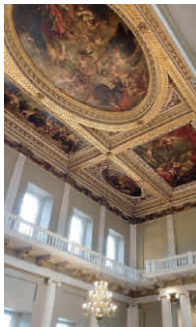


Date Wed 19 Mar to
Fri 21 Mar 2025

Tutor Frances Winder

Cost Residential: £305
Non-residential: £220

Course code A2503FW



THE ART AND ARCHITECTURE OF THE EARLY STUARTS 1603-1660



In this short course we will explore something of the revolution in art and architecture in England during the first half of the seventeenth-century, associated with such names as Inigo Jones, Charles I, Anthony Van Dyck and Peter Paul Rubens. We will also consider the effects of Civil War, the Puritan Republic and the Restoration on iconography and building.

Date Wed 19 Mar to
Fri 21 Mar 2025

Tutor Dr. Andrew Lacey

Cost Residential: £305
Non-residential: £220

Course code H2503AL

TWISTED LOG CABIN

Take a look on Pinterest and you will find many twisted log cabin quilts. They look complicated but are actually very easy with the main difficulties coming from the colours of the fabrics. On this course, you could make a quilt using square, triangular or hexagonal twisted log cabin blocks or just make one of each of them. You will also be taught to design your own version of the blocks. You may bring your own project if you prefer.



Date Wed 19 Mar to
Sat 22 Mar 2025

Tutor Lis Binns

Cost Residential: £410
Non-residential: £285

Course code C2503LB

SILVER CLAY JEWELLERY

Silver Clay is a remarkable material made of fine silver particles, an organic plant-based binder and water. It can be moulded, rolled, textured and shaped to create hand-crafted pieces which are then fired and polished to make fine hallmark-quality silver jewellery. With expert guidance, make up to three professionally styled pieces over a weekend. Those with some experience may be supported to work on their own projects. A materials kit will be available to purchase from the tutor at the cost of £68 (subject to silver prices)



Date Fri 21 Mar to
Sun 23 Mar 2025

Tutor Tracey Spurgin

Cost Residential: £305
Non-residential: £220

Course code C2503TS

TICKET TO RIDE - PART 1

An exploration of multiple styles of 20th century popular music, from the great American songbook, the emergence of jazz, blues and rock 'n' roll and onwards to pop music of the 1960's, spearheaded by an examination of many of the songs of The Beatles. From there, the course will delve into the multiple genres of 70's music, including the singer-songwriter movement, soul and reggae, and further still into the 1980's, with the development of 'synth-pop' – much of this inspired by German electronic groups of the previous decade. A vital component of the course will be the contributions of those attending – students are invited to bring along examples of at least 5 songs / tracks which mean something to them to share with the group. The tutor will be happy to assist in this process if people are uncertain of how this will work.



Date Fri 21 Mar to
Sun 23 Mar 2025

Tutor Chris Rodwell

Cost Residential: £305
Non-residential: £220

Course code M2503CR



LEATHERWORK: HAND-STITCHED TOOL HOLDER



Leatherwork is a great craft; using traditional methods to make quality items that will last you for years. In this course you will learn how to make your own hand-stitched leather and canvas tool holder, which is adjustable to your tools.

Date Fri 21 Mar to
Sun 23 Mar 2025

Tutor Roslyn Whiting

Cost Residential: £355
Non-residential: £270

Course code C2503RW



LINO-CUT PRINTMAKING



Using traditional lino-cut printmaking techniques, print your own images to create individual and decorative cards or pictures with expert guidance from Clare Melinsky. Clare is a renowned illustrator whose lino cut designs are used on product packaging, book covers, magazines, cards and even postage stamps. All tools needed are provided as part of the course: we also provide heated work surfaces to soften the traditional linoleum block to make it much easier to cut and carve. The course will benefit both beginners and those with some experience. There is enough time to make several designs.

Date Sun 23 Mar to
Wed 26 Mar 2025

Tutor Clare Melinsky

Cost Residential: £410
Non-residential: £285
(Materials c£15)

Course code C2503CM

FOLK SINGING WITH WILL AND ROSIE



A gentle introduction to singing folk music in three- and four-part harmony! Can't read music? No problem - folk is an oral tradition, and we teach everything by ear. Learn how to warm up your voice, then sing in rounds and in parts, as you become acquainted with a wonderful folk repertoire with two tutors providing plenty of support and guidance. Suitable for all, even non-musicians. Will and Rosie have been professional performers for the last 12 years and have a wealth of experience to offer their students.

Date Sun 23 Mar to
Tue 25 Mar 2025

TutorS Rosie Calvert and
Will Finn

Cost Residential: £335
Non-residential: £250

Course code M2403RC

CAPTURE SCOTTISH SCAPES: EXPLORE EXPRESSIVE MIXED MEDIA



Working in layers with mixed media to create expressive landscape paintings inspired by Scotland, using reference photos provided by your tutor. A combination of group activities that encourage you to paint loosely and explore colour alongside one-to-one tutorship to create your individual paintings. Mixed media, for all levels.

Date Sun 23 Mar to
Fri 28 Mar 2025

Tutor Marion Boddy-Evans

Cost Residential: £590
Non-residential: £405

Course code A2503MBE

PHILOSOPHY AND NATURE: DEEP ECOLOGY



"Nature does not hurry, yet everything is accomplished."
— Lao Tzu. This course will take a gently philosophical approach to the relationship between humanity and nature. Exploring the thought-provoking ideas of Arne Naess and 'Deep Ecology', Henry David Thoreau's 'Walden' and the Daoist worldview of harmony with nature, we will consider how these concepts might be applied to modern challenges. Through discussion, contemplative writing and meditative walking, we will seek to foster a deeper connection with the natural world.

Date Tue 25 Mar to
Fri 28 Mar 2025

Tutor Darren Harper

Cost Residential: £410
Non-residential: £285

Course code L2503DH

"I HACK AND HAMMER AT THE HANDIWORK OF VERSE" AN EXPLORATION OF NORMAN NICHOLSON'S POETRY



Norman Nicholson (1914-1987) was the foremost Cumbrian poet of his period and was honoured with several awards, including the Queen's Gold Medal for Poetry (1977). Proud to be a regional poet, Nicholson's work in many genres was nationally and internationally known and respected. Indeed, as his Guardian obituary notes, 'some critics considered him the best Lakeland poet since Wordsworth'. Come on an exciting and surprising journey through Nicholson's work, exploring his craftsmanship, his deep knowledge of Greater Lakeland, and the important and lasting themes he tackled. The course will also consider some influences on Nicholson and works that he in turn inspired.

Date Wed 26 Mar to
Fri 28 Mar 2025

Tutor Dr Antoinette Fawcett

Cost Residential: £310
Non-residential: £225

Course code L2503AF

JAPANESE BORO SLOW STITCHING

Simply spend peaceful time being creative. Slow stitching is perfect for experiencing mindful relaxation. We'll be inspired by the Japanese Boro tradition that values cloth as a precious resource, extending its life by reusing every scrap. Working intuitively, you'll discover freedom in working without pre-planned designs. Beautiful results & rewarding experience! No sewing skills needed.



Date Fri 28 Mar to
Sun 30 Mar 2025



Tutor Carolyn Shepherd

Cost Residential: £305
Non-residential: £220

Course code C2503CS

HIGHAM HALL CHOIR: 'OTHER WORDLY'

Exploring the stunning Requiem by Herbert Howells and music by Renaissance composer Dionisius Priors (1460 - 1514) whose music can only be described as crystalline and other worldly. We'll explore more early composers such as John Sheppard (In pace), William Byrd's Resurrexi and have a taste of Gregorian chant (In paradisum). Music is sent out in advance by email. For this one, you need to check your voice-type and sight-singing ability with Deborah before booking (deborah_catterall@yahoo.com).



Date Fri 28 Mar to
Mon 31 Mar 2025

Tutor Deborah Catterall

Cost Residential: £410
Non-residential: £285

Course code M2503DC

**SPECIAL EVENT****TALK & TEA: A PHILOSOPHER'S GUIDE TO LOVE**

This talk will explore diverse perspectives on love. Beginning with Plato's The Symposium, we'll discuss physical attraction and spiritual beauty. Erich Fromm's The Art of Loving will proffer psychological insights, emphasizing love as an art that requires practice, care, and knowledge. Lastly, we'll engage with Bell Hooks' All About Love, advocating for love as a radical force for social change and personal growth.

Date 2pm – 4pm
Fri 28 Mar 2025



Tutor Darren Harper

Cost tickets £18 each
or £32 for 2 including
refreshments

Course code D2503DH

DAY COURSE**EXPERIMENTAL DRAWING**

A fun course experimenting with different approaches to drawing, taking inspiration from artists both contemporary and traditional. A great class for those looking to progress and expand their drawing methods.

Date 10am – 4pm
Sat 29 Mar 2025



Tutor Ceri Allen

Cost £95 including lunch

Course code D2503CA

DAY COURSE**HEALTHY BODY, HEALTHY MIND**

'Nothing is more important than your health' is a common wisdom expression and in this workshop Lina will invite participants to explore this further. Using the ancient health paradigm from Ayurveda and modern neuroscience concepts, Lina will offer ideas and practices to support a healthy way of being.

Date 10am – 4pm
Sat 29 Mar 2025



Tutor Lina Mookerjee

Cost £95 including lunch

Course code D2503LM

**SPRING BULBS, BUDS AND BLOSSOM IN THE LANDSCAPE**

Express your feelings in drawing and painting about nature bursting out from hedgerows, verges, meadows and woods in spring. This special time of year is all about the energy and optimism of growth and colour. The course will help you observe directly from nature through outdoor sketching then develop powerful expressive responses in the studio with demonstrations, group discussions and individual support throughout. This course is for students with moderate or greater experience of painting wanting to try something more challenging.

Date Mon 31 Mar to
Fri 4 Apr 2025

Tutor Lionel Playford

Cost Residential: £540
Non-residential: £400
(incl. field trips)

Course code A2503LP

BOTANICAL ART IN COLOURED PENCIL: CAPTURING THE SIGNS OF SPRING



With colour creeping back into the plant world, what better time to capture the colours, textures and unfurling forms of spring: explore emerging fern crosiers, velvety wallflowers and violets, the fresh yellows of narcissi and true blues of grape hyacinths, the silky petals of early cherry blossom, the joyous riot of primula flowers and the furry catkins of pussy willow. In a relaxed atmosphere, learn to create subtle and complex colours and techniques for creating textures using coloured pencils. This course is suitable for beginners and those with some experience of this versatile medium.

Date Mon 31 Mar to
Fri 4 Apr 2025

Tutor Susan
Christopher-Coulson

Cost Residential: £520
Non-residential: £380

Course code A2503SCC

SIX OF THE BEST CLASSICAL SYMPHONIES



Sharing our time with Haydn and Mozart, we will consider some of the most impressive symphonies of the Viennese Classical Era. Haydn's Surprise, Clock and London symphonies confirm his mastery as the so-called Father of the Symphony. Mozart's final three symphonies, nos. 39, 40 & 41 are generally regarded as his finest symphonic works. Ian will pinpoint matters of form and style.

Date Mon 31 Mar to
Wed 2 Apr 2025

Tutor Ian France

Cost Residential: £305
Non-residential: £220

Course code M2503IF



ADDITIONAL INFORMATION

COURSE FEES

Non-residential course fees cover tuition, morning coffee/afternoon tea, lunch and dinner.

Residential fees cover all of the above plus accommodation and breakfast.

Materials: In addition to the course fees, there may be some additional itemised costs to cover materials provided as part of the course. These are often paid direct to the course tutor at the start of the course and are not included in the course fees unless otherwise stated. Full details in the course programme.

Field trips: Some courses involve field trips to locations around Cumbria and the Borders. Where this is the case, course fees include a small additional charge to cover associated costs.

Course programmes are available on request and are sent with your booking confirmation.

OTHER EVENTS

The ticket price for lectures and performances do not include refreshments unless otherwise stated.

BURSARIES AND ASSISTED PLACES SCHEME

If you are in receipt of individual State Benefits or aged 18-25, you can apply for either:

- an assisted place: up to 20% discount on course fees.
- a bursary: a one-off discretionary award up to the value of 70% of course fees.

Please complete an application form available from the office: 017687 76276
admin@highamhall.com

Bursaries and the assisted place scheme are supported by Friends of Higham membership subscriptions. Awards are made at the discretion of Higham Hall College and subject to availability of funds.

TO BOOK A PLACE

Please call the office on 017687 76276 to enquire about a course, book a place and discuss your accommodation requirements.

1-day (non-residential) workshops

Full fee payable on booking.

Residential courses

A non-refundable deposit of £50 is required to reserve a place on a residential course. Payment of any outstanding course fees must be made no less than one month before the course start date.

You can book/pay

- over the telephone using a credit or debit card
- by sending a cheque made out to 'Higham Hall College Limited' with a completed booking form (enc.)

Please note, your booking will not be confirmed until this payment has been processed.

CANCELLATION POLICY

When paying the outstanding balance, you have the option to take out our cancellation cover at £5 per night. This guarantees an 80% refund of the course fee (less non-refundable deposit of £50) if you need to cancel your place within one month of the course start date because of illness, injury or death of self or close relative (a doctor's certificate or equivalent evidence may be required). Please note we are unable to issue any refund without this cover although your own travel insurance may cover you.

COVID-19

There are no current Covid-19 restrictions in the UK. If you have COVID-19 you should try to stay at home. To help us protect other students who may be vulnerable, please call to inform us if you have a positive COVID-19 result in the week before your course.



HOW TO GET HERE

Higham Hall is on the northern edge of the Lake District, between Cockermouth (3 miles) and Keswick (8 miles), near Bassenthwaite Lake.

Postcode: CA13 9SH

What3words: buzzards.practical.trickled

By car

From the A66, take the B5291 signposted Dubwath/Castle Inn. Higham Hall is signposted after turn-off. Continue 500m to the junction, turn right, go 500m and turn left 500m up the hill.

From Carlisle (A595), turn left at Bothel (A591) and turn right onto B5291 at Castle Inn. After Ouse Bridge bear sharp right, take 2nd road on the right 500m up the hill.

Public transport

Nearest railway stations: Penrith (25 miles), Carlisle (24 miles), Workington (10 miles) or Aspatria (8.4 miles).

From Penrith station, take the X4/X5 bus service towards Workington & get off at the Lakes Distillery or Embleton Wheatsheaf pub.

From Workington station, take the X4/X5 bus service towards Penrith & get off at the Lakes Distillery or Embleton Wheatsheaf pub.

From Carlisle station take the no.554 bus towards Keswick & get off at the Castle Inn Hotel.

Please let us know if you intend to travel by public transport. We can meet you at these bus stops if you arrive before 5pm.

Alternatively, pre-book taxis from the station to Higham for a fair fixed rate direct through Davies Taxis (Keswick): 017687 72676

ADDITIONAL INFORMATION

STAYING AT HIGHAM

We hope you will make yourself at home at Higham. Explore the garden or climb a fell; there is a drying room for damp clothes and boots. If not in use for a course, the Drawing Room is a cosy place to while away a quiet hour or two. Browse the bookshelves and baskets of donated books for reading material while you are here; there is also a reference library in the Parlour for students to use and enjoy. The Bar is open nightly 6-10:45pm. We have umbrellas and hot water bottles and a small stock of travel essentials if you have forgotten anything. There is a member of staff on duty 24/7 so if you need help with anything, just ask.

On the menu

We serve a hearty breakfast, 2-course lunch and 3-course dinner every day. Morning coffee and afternoon tea with homemade biscuits and cakes are also provided. All meals are prepared freshly in our kitchens from locally sourced ingredients so we are able accommodate any dietary or allergy requirements. Please tell us about any dietary needs on booking.

Accommodation

Every room is different at Higham. We offer single, twin and double rooms. All have private bathrooms but not all are ensuite.

We charge an ensuite supplement of £10pppn. Double occupancy of twin rooms is discounted at a rate of £5pppn. Carers sharing a room will be charged for meals only. Bedroom accommodation in the main house is on the first floor, and we have a stair lift to help with

access. There are also a number of ground floor rooms with level access in the Gatehouse and Bungalow, which are a short distance from the main house. We offer one fully accessible (single) bedroom. Please get in touch to discuss any mobility issues so we can ensure you are offered appropriate accommodation.

We have set aside two ground floor rooms for guests who wish to bring their dogs. There is an additional charge of £30 per dog to cover housekeeping costs. Please check availability on booking.

There is plenty of free parking on site.

Hook-ups and a sluice room are available for students wishing to stay in campervans or motor homes. Please tell us in advance. A charge of £15 per vehicle per night will be due on booking.

Electric car charging is no longer possible on site. Please call for guidance on nearest charging points.

Space permitting, we also welcome guests who are not attending courses.

B&B standard room £50pppn
(ensuite +£10pppn)

Breakfast £12, Lunch £16, Dinner £26

Please note accommodation and catering charges for non-course attendees are subject to VAT.

Alternative B&B accommodation is available in the local area; please ask the office for recommendations.





PLEASE SUPPORT US

Higham Hall College is one of an increasingly small number of independent residential adult education institutions across the UK providing lifelong learning opportunities.

Looking for gift ideas?

We have a selection of tutors' prints, books and cards for sale. We also have jute bags capacious enough to carry all your crafting gear, reusable insulated stainless steel water bottles handy for field trips, and gorgeous new dishwasher-proof, bone china mugs designed by tutor Susan Christopher-Coulson and inspired by Higham. All proceeds from the sale of merchandise will go towards the roof appeal. Higham gift cards are also available and can be credited with any amount, valid for 2 years.

Volunteer


We are hugely grateful to our volunteers for the hard work they put in to help us keep Higham running, from gardening or driving the minibus to making curtains. If you have a skill and can offer a few hours of your time either on a regular weekly basis or for a few concentrated days, please get in touch.

Donate

Our wonderful Grade II listed building is approaching 200 years old and, among other things, we need a new roof. Please help us if you can. Visit our [JustGiving](#) page via the link on our website or give via the new contactless donations point at reception.

Join the Friends of Higham

Membership starts at £10/year. Your subscription will go directly towards funding bursaries and our assisted places scheme to support broader access and participation for those on low incomes/in receipt of certain state benefits or aged 18-25.



We are an Educational Trust supporting lifelong learning in the arts, natural history and humanities through workshops, lectures, residential courses and retreats in the English Lake District.

for the creative and the curious...



HIGHAM
HALL

Higham Hall
Bassenthwaite Lake
Cockermouth
Cumbria
CA13 9SH

017687 76276
highamhall.com

We are also a company limited by guarantee and registered in England.
Company no. 06421365 Charity no. 1124959 VAT no. 927 4556 96