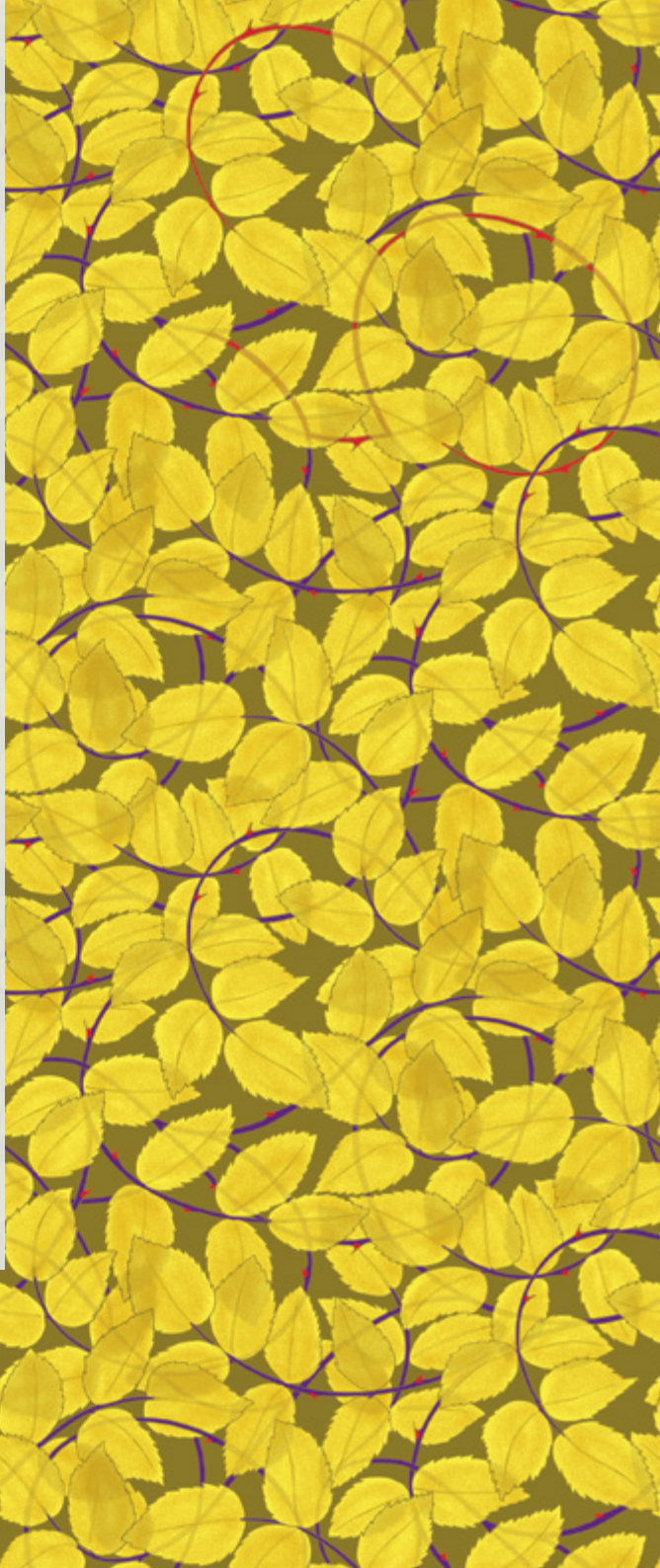


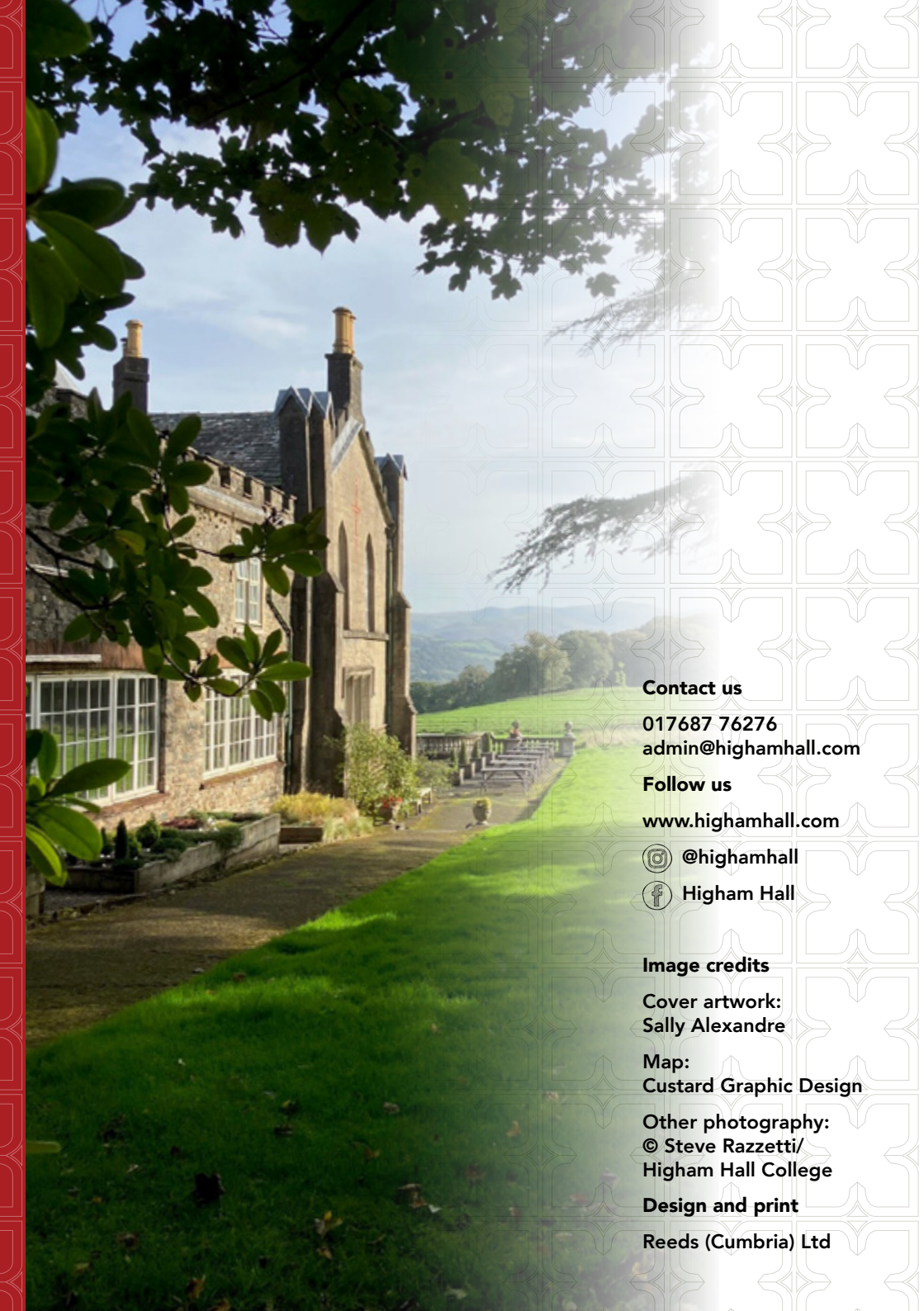


HIGHAM  
HALL

STUDY  
BREAKS  
IN THE  
LAKES

APRIL-  
SEPTEMBER 2025





**Contact us**

**017687 76276**

**admin@highamhall.com**

**Follow us**

**www.highamhall.com**



**@highamhall**



**Higham Hall**

**Image credits**

**Cover artwork:  
Sally Alexandre**

**Map:  
Custard Graphic Design**

**Other photography:  
© Steve Razzetti/  
Higham Hall College**

**Design and print**

**Reeds (Cumbria) Ltd**



# WELCOME



to our programme for Spring/Summer 2025. With over 160 courses inside, we hope you find something to inspire you this season.

We know that Higham means a great deal to many of you, as it does to our dedicated team of staff and tutors who care for this beautiful place and provide the warm welcome that makes Higham special. The last few years have been particularly challenging for us; our running costs have increased by over 30% since 2019 thanks to COVID-19 and huge inflationary cost increases but our course fees – Higham’s only source of income – have simply not kept pace.

From 1 April we have changed the way we calculate course fees to more accurately reflect our actual costs. The fee comprises two parts: firstly, tuition fees (including related costs e.g. materials, field trips) and secondly, accommodation and meals – these vary depending on whether you are attending as a residential or non-residential student. In applying this new formula, some course fees have risen by up to 15%. We are confident, however, that our prices still represent good value for money.

We know many of you are repeat visitors and would like to thank you for your loyalty and continued support. If you book onto 3 or more residential courses per year (1 April - 31 March), a discount of £10 per night will be applied to the third and any subsequent courses in that 12-month period. We will continue to offer assisted places and bursaries to enable those on low incomes to attend. These are currently funded by the Friends of Higham; please get in touch if you would like to apply for an assisted place or support us as a Friend.

As a charity we do not operate to make a profit and we will always strive to keep prices as low as possible. With this in mind, we have chosen to delay incorporating the full impact of the increase in employers’ national insurance costs from April 2025. Instead, we would ask you to make a voluntary donation using Gift Aid if you can, either on the enclosed booking form or online at <https://www.totalgiving.co.uk/charity/higham-hall-college>. A contribution of £10 per course attended would make a huge difference.

Dr Elizabeth Fisher, Principal



Higham employs 35 permanent members of staff. Many of them work away behind the scenes, keeping the show on the road. This includes our fantastic kitchen team, led by Jan, who are in the kitchen from 7am to 8pm every day, 50 weeks a year, preparing all your meals from scratch. Seen here (left to right): Ann, Sheila, Jan, Lee. The only person missing from this picture is the lovely Carol, who bakes all our cakes and biscuits.





# COURSES

All courses take place in the main house or studio, a converted stable which is reached via an internal courtyard. All teaching spaces are on the ground floor and have level access.

All courses start with dinner at 6.30pm on the first day and end after lunch on the last day unless otherwise noted in the course programme.

Day courses, lectures and concerts are available to book online. If you have a smartphone or device, you can scan this QR code or visit the website: [www.trybooking.com/uk/eventlist/highamhallcollege](http://www.trybooking.com/uk/eventlist/highamhallcollege).



Some courses run every year and there is often great demand for places. If you wish your name to be added to our 'register an interest' list for a particular course you can do this up to 12 months in advance. Just call and speak to a member of the office team.

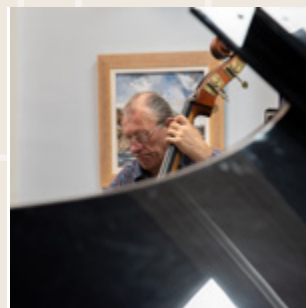
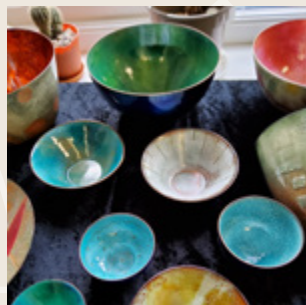
You can also always call to enquire about any course or event, to book a place and to discuss your accommodation requirements. Our office team – Chris, Joan, Helen, Ruth and Amy – are always happy to help. We do not have an answerphone service so please be patient if you can't get through at first.

Details correct at publication. Please note we reserve the right to make changes to the programme if necessary.

## STAY UP TO DATE

Any alterations and late additions to the programme will be advertised in our eNewsletter.

Subscribe at [www.highamhall.com](http://www.highamhall.com)



## Course Categories



Music



Wellbeing



Literature



Textiles



Nature



History



Crafts



Philosophy



Visual Arts



## SPRING BULBS, BUDS AND BLOSSOM IN THE LANDSCAPE

This special time of year is all about the energy and optimism of growth and colour. The course will help you observe directly from nature through outdoor sketching to then develop powerful expressive responses in the studio with demonstrations, group discussions and individual support throughout. This course is for students with moderate or greater experience of painting who would like to try something more challenging.

**Date** Mon 31 Mar  
to Fri 4 Apr



**Tutor** Lionel Playford

**Cost** Residential: £540  
Non-residential: £400  
(incl. field trips)

**Course code** A2503LP

## BOTANICAL ART IN COLOURED PENCIL: CAPTURING THE SIGNS OF SPRING

With colour creeping back into the plant world, what better time to capture the colours, textures and unfurling forms of spring: explore emerging fern crosiers, velvety wallflowers and violets, the fresh yellows of narcissi and true blues of grape hyacinths, the silky petals of early cherry blossom, the joyous riot of primula flowers and the furry catkins of pussy willow. In a relaxed atmosphere, learn to create subtle and complex colours and techniques for creating textures using coloured pencils. This course is suitable for beginners and those with some experience of this versatile medium.

**Date** Mon 31 Mar  
to Fri 4 Apr



**Tutor** Susan  
Christopher-Coulson

**Cost** Residential: £520  
Non-residential: £380

**Course code** A2503SCC



## SIX OF THE BEST CLASSICAL SYMPHONIES

Sharing our time with Haydn and Mozart, we will consider some of the most impressive symphonies of the Viennese Classical Era. Haydn's Surprise, Clock and London symphonies confirm his mastery as the so-called 'Father of the Symphony.' Mozart's final three symphonies, nos. 39, 40 & 41 are generally regarded as his finest symphonic works. Ian will pinpoint matters of form and style.

**Date** Mon 31 Mar  
to Wed 2 Apr



**Tutor** Ian France

**Cost** Residential: £305  
Non-residential: £220

**Course code** M2503IF

### 300 - THREE CENTURIES OF ANGLO-SCOTTISH WARFARE

A narrative overview of the Anglo-Scottish Border wars (1296 - 1603), focusing on conflict and identity, military activity and fortifications, battles, weapons and armour. From the riding names, the blood feud/vendetta, the Border Laws and wardens to literary and cultural legacies, what are the resonances today?



**Date** Wed 2 Apr  
to Fri 4 Apr



**Tutor** John Sadler

**Cost** Residential: £360  
Non-residential: £255  
(incl. field trips)

**Course code** H2504JS

### WATERLOO ASSOCIATION WEEKEND

The Napoleonic Wars are often seen as the 1st modern global conflict which was brought to an end at the Battle of Waterloo. In the 210th anniversary year, we will devote the entire weekend to the study of this dramatic campaign. We will analyse the composition of the French army of 1815, and the pivotal action of Perponcher's division at Quatre Bras. On the battlefield of Waterloo itself we will look at the attack of d'Erlon's corps; discuss the action on Wellington's left flank around farms in La Haye, Papelotte, Frischermont and Smohain; focus on Halkett's 5th British Infantry Brigade in the thick of the action and Marshal Grouchy's failure to arrive at Waterloo. Organised in co-operation with The Waterloo Association ([waterlooassociation.org.uk](http://waterlooassociation.org.uk))

**Date** Fri 4 Apr  
to Sun 6 Apr



**Tutor** Dr Graeme Callister,  
Andrew Field &  
Michael Robinson

**Cost** Residential: £325  
Non-residential: £185

**Course code** H2504WA



### INNER SOLWAY HERITAGE

Minibus fieldtrips exploring the rich heritage of the inner Solway coast of Cumbria in England and Dumfries and Galloway in South West Scotland. Taking in the local history, landscape, lesser known heritage sites and cultural activities of an intriguing part of the British coast.

**Date** Sun 6 Apr  
to Wed 9 Apr



**Tutor** Fiona Stoddart

**Cost** Residential: £535  
Non-residential: £380  
(incl. field trips)

**Course code** H2504FS



## CAPTURING FLOWERS IN WATERCOLOUR AND PENCIL

Drawing and painting flowers is a lovely thing to do, though if you have never done it before it can be a bit daunting. Learn how to draw a basic flower and leaf shapes to start building your confidence then build upon this to produce a finished piece with details and shading. We will be looking at colour mixing so you can achieve bright, vibrant shades and using a number of watercolour techniques, bring your flower paintings to life. Step-by-step demonstrations and individual tuition throughout.

**Date** Sun 6 Apr  
to Wed 9 Apr



**Tutor** Jane Beech

**Cost** Residential: £485  
Non-residential: £330

**Course code** A2504JB



## WOMEN WRITERS OF THE LAKES

The literary landscape of the Lake District has been dominated by men, and its female writers, both 19th and 20th century have often been overlooked. The course will look at the lives and work of Dorothy and Dora Wordsworth, Sara Coleridge, Harriet Martineau, Beatrix Potter, Margaret Forster and Sarah Hall.

**Date** Mon 7 Apr  
to Thu 10 Apr



**Tutor** Kathleen Jones

**Cost** Residential: £485  
Non-residential: £330

**Course code** L2504KJ

## CREATIVE RELIEF WOODCARVING

Relief carving is the process of cutting a pattern or design into a flat surface. For those new to the craft, Sharon will gently guide you through the process of transforming a block of wood into a unique image in relief with generous one-to-one support, technical instruction and extensive knowledge of her subject. Bring your own visual sources or use Sharon's books for inspiration. Learn to transfer a pattern, use chisels safely and try a range of carving techniques. For beginners and experienced woodworkers. Those who have attended previous courses may bring projects of their own to work on.

**Date** Mon 7 Apr  
to 9am Sun 13 Apr



**Tutor** Sharon Littlely

**Cost** Residential: £800  
Non-residential: £470

**Course code** C2504SL

## RUSKIN LACE

Ruskin Lace is a distinctive form of lace which originated as a cottage industry in the Lake District in the 1880s. You will be working on linen fabric using a combination of drawn thread and cut linen work, with the geometric designs being created using needlelace techniques specific to this type of lace. The course is suitable for both beginners, who can purchase a starter pack from the tutor (cost £15), and for those with more experience.



**Date** Wed 9 Apr  
to Fri 11 Apr



**Tutor** Karen Quickfall

**Cost** Residential: £350  
Non-residential: £245

**Course code** C2504KQ



### FOLD & DAPPLE: POETRY PAINT PROCESS

Take a slow close look at springtime unfolding in the gardens of Higham Hall. Taking a lead from Gerard Manley Hopkins' poem 'Pied Beauty' we'll combine en plein air painting techniques with creative listings, couplings and connections from the things we observe, allowing curiosity and experimentation to unlock creative potential. Using both writing and mark-making exercises to prompt discovery, we will explore how a series of interlinked artworks can spring from a single text and inspire new paintings and writing.

**Date** Fri 11 Apr  
to Sun 13 Apr



**Tutor** Susan Allen  
and Alison Critchlow

**Cost** Residential: £440  
Non-residential: £335  
(incl. materials)

**Course code** A2504SA



### WOVEN TAPESTRY: BEGINNERS

Whether you are a beginner or in need of a refresher, this workshop is designed to give you a solid technical grounding in tapestry weaving. Participants will learn essential weaving techniques from setting up a loom, weaving a design, to finishing your tapestry. All equipment provided.

**Date** Fri 11 Apr  
to Sun 13 Apr



**Tutor** Louise Martin

**Cost** Residential: £355  
Non-residential: £250

**Course code** C2504LM1

### FINDING MY VOICE: BUILDING MY SELF-ESTEEM

Using humanistic theories, we will explore self-esteem levels through held values, feelings, levels of respect and behaviours. The concept of an inner-critic and 'imposter syndrome' – influence and impact will be explored, alongside how we can begin to change this by developing an internal supportive ally.

**Date** Sat 12 Apr  
10am - 4pm



**Tutor** Lina Mookerjee

**Cost** £95 incl. lunch and refreshments

**Course code** D2504LM

## DRAWING INTENSIVE

A comprehensive course covering the main aspects of drawing with both traditional and contemporary approaches using a variety of different media. We will work on form, tone, mark-making, and creating space using a variety of subjects including some figure work and fun experimental exercises. The course is suitable for all levels of experience. Course includes power point presentations, art film screenings, demonstrations and individual guidance.



**Date** Sun 13 Apr  
to Thu 17 Apr

**Tutor** Ceri Allen

**Cost** Residential: £585  
Non-residential: £380

**Course code** A2504CA

## INTRODUCTION TO MEDIEVAL MANUSCRIPT ILLUMINATION

Use skills passed down by medieval craftspeople to create small designs using 23 carat gold and pigments. No drawing experience is necessary. A selection of medieval and contemporary designs are available to trace, including illuminated letters, but creativity is welcomed. See also FURTHER MEDIEVAL MANUSCRIPT ILLUMINATION with Toni, 15-17 April (details below).



**Date** Sun 13 Apr  
to Tue 15 Apr

**Tutor** Toni Watts

**Cost** Residential: £370  
Non-residential: £265  
(incl. materials)

**Course code** A2504TW1

## WOVEN TAPESTRY: WORDS

Explore and learn techniques to convey words - meander, disappear, fast, up/down. How do you express these words playfully through colour and yarn choices?



**Date** Sun 13 Apr  
to Tue 15 Apr

**Tutor** Louise Martin

**Cost** Residential: £355  
Non-residential: £250

**Course code** C2504LM2

## FURTHER MEDIEVAL MANUSCRIPT ILLUMINATION

This an intermediate level course. Make perfect manuscript gesso using a traditional recipe, lay it smoothly and gild with loose leaf gold. This class is full of practical tips, helping you to achieve raised areas of gilding with a mirror shine. Those who are already able to make and lay gesso are welcome to work on their own projects with help and advice from the tutor.



**Date** Tue 15 Apr  
to Thu 17 Apr

**Tutor** Toni Watts

**Cost** Residential: £370  
Non-residential: £265  
(incl. materials)

**Course code** A2504TW2



**WOVEN TAPESTRY: WEATHER**

Sun, rain, sleet, wind, hurricane. How to create the mood and atmosphere of the elements using the wonderful medium of tapestry.

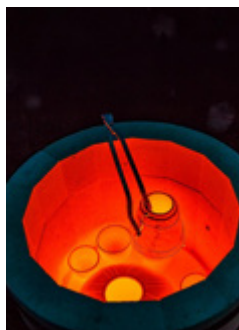
**Date** Tue 15 Apr  
to Thu 17 Apr



**Tutor** Louise Martin

**Cost** Residential: £355  
Non-residential: £250

**Course code** C2504LM3

**RAKU POTTERY WITH CHRIS BARNES**

Chris will introduce you to Raku pottery making and help you to create your own pieces of Raku pottery and sculpture. Experience the excitement of raku firing with an opportunity to be really involved with the process. With lectures, demos and a trip out between days of making and firing to allow for your work to be biscuit-fired.

**Date** Thu 17 Apr  
to Tue 22 Apr



**Tutor** Chris Barnes

**Cost** Residential: £710  
Non-residential: £450  
(incl. materials)

**Course code** C2504CB

**CEILIDH BAND FOLK ENSEMBLE EASTER JAM(BOREE)**

For musicians of any standard with a concert pitch instrument such as violin (fiddle), viola, cello, mandolin, mandola, banjo, ukulele, guitar, flute whistle, piano accordion, melodeon, concertina etc. Parts for transposing instruments in Bb, Eb and bass clef will be available. Some basic music reading and playing skills are essential so that you are able to take part and enjoy the course. Guitarists should be able to follow chord symbols and play basic accompaniment skills. We will play a wide range of traditional and contemporary folk music from the British Isles, America and beyond with parts tailored to all abilities.

**Date** Fri 18 Apr  
to Tue 22 Apr



**Tutor** Chris McShane

**Cost** Residential: £585  
Non-residential: £380

**Course code** M2504CM

## EASTER EMBROIDERY EXTRAVAGANZA

Come and explore hand embroidery. Embroiderers of all levels are welcome, from those brand new to embroidery to the more experienced stitcher. Choose one of the kits available, good for an introduction into embroidery, or from a selection of embroideries on display using your own fabric and threads. Alternatively bring along your own project to stitch and get helpful advice and guidance throughout the course.



**Date** Fri 18 Apr  
to Mon 21 Apr



**Tutor** Angie Burt

**Cost** Residential: £485  
Non-residential: £330

**Course code** C2504AB1

**Date** Mon 21 Apr  
to Wed 23 Apr

**Tutor** Angie Burt

**Cost** Residential: £485  
Non-residential: £330

**Course code** C2504AB2

## WHAT IS PAINTING - A STUDIO PRACTICE-LED EXPLORATION

Through your own studio-based painting practice, supported by group and individual tutorials, explore and develop your understanding of how you use paint as a conceptual and material substance; extend your technical responses to your chosen medium and consider your practice within the context of contemporary painting and in relation to the broader realm of contemporary art practice today.

**Date** Tue 22 Apr  
to Sun 27 Apr



**Tutor** Steve Humble

**Cost** Residential: £675  
Non-residential: £390

**Course code** A2504SH

## A DAY OF MEDIEVAL MUSIC AND DANCE

Suitable for musicians and dancers who would like to learn Medieval music and dance. If you have secure playing and music reading skills on your instrument, you will enjoy playing dance and ceremonial tunes of the time. We will play a selection of music arranged in parts for our mixed instrument band. There will be transposed parts for Bb and Eb instruments. We will also have a go at some of the dances and explore the social etiquette of the period. Our emphasis will be on fun and learning. Students will need their own instrument and music stand, suitable footwear and comfortable clothing for dancing. The dances will not be overly fast nor energetic. This will be a day of pleasant surprises and discoveries about music of the past.

**Date** Wed 23 Apr  
10am - 5pm



**Tutor** Chris McShane

**Cost** £95 incl. lunch  
and refreshments

**Course code** D2504CM



### VIOL AND RECORDER CONSORT PLAYING

Two parallel, friendly courses for players at any level, though not beginners ie. confident at playing one to a part. The music will be chosen to suit the participants and depending on numbers could be in anything from three to six parts. For those who wish there are opportunities to mix and match between the two courses and we usually join together for the last session.

**Date** Sun 27 Apr  
to Tue 29 Apr



**Tutor** Elizabeth Dodd  
(viols) with Philip Gruar  
(recorders)

**Cost** Residential: £400  
Non-residential: £295

**Course code** M2504ED

### EXPLORE THE FUN OF COLLAGE

Collage frees you up from the rules of representational drawing or painting and allows you to explore a more personal artistic language. It is a technique that combines found images, printed text or textured surfaces – often alongside painted or hand-drawn elements – to create an image that can be abstract, expressive and sometimes contain social commentary. Flex your artistic muscles with creative exercises and develop your own compositions guided by professional artist Sue Ford.

**Date** Sun 27 Apr  
to Thu 1 May



**Tutor** Sue Ford

**Cost** Residential: £585  
Non-residential: £380

**Course code** A2504SF

### COLOUR ANALYSIS

A dip into the process of colour analysis, exploring colour theories and qualities and how colour analysis systems have developed over the years. There will be some group exercises where colours are compared to help you start your own exploration into which colour families and qualities suit you best, and how colour personalities can influence your wardrobe choices. This introductory course will give you the foundational tools to determine which colour families or qualities will enhance your appearance and identify those which are unflattering.

**Date** Sun 27 Apr  
10am - 5pm



**Tutor** Coral Grace

**Cost** £95 incl. lunch and  
refreshments

**Course code** D2504CG

### LOST CUMBRIA ON FILM

Join us as we embark on a time travelling adventure with producers from Cumbria Film Archive. Their rare films, going back well over a century, mean you will enjoy a feast of nostalgia. For over thirty years they have been amassing a huge collection of material which will enthral anyone with an interest in local history. This will be a visual treat. Former BBC and ITV television producer Andrew Leitch will introduce each of the films and tell you how this unique archive was compiled over the years.



**Date** Sun 27 Apr  
11am - 4pm



**Tutor** Andrew Leitch

**Cost** £30 includes lunch  
and refreshments

**Course code** D2504AL



## BIRD SONGS AND CALLS

There is no doubt that familiarity with bird songs and calls plays an essential part in the process of locating and identifying them. For example, the clamour of bird song in springtime woodland gives an indication of the both the number and identity of birds present, which might otherwise be overlooked. This course, deliberately timed to maximise the array of summer migrants, will help everyone from beginners to the more experienced increase their knowledge and understanding. Please note, fieldtrips will involve a fair amount of walking. If in doubt, call the office to discuss.



**Date** Mon 28 Apr  
to 9am Fri 2 May

**Tutor** Keith Offord

**Cost** Residential: £610  
Non-residential: £380  
(incl. fieldtrips)

**Course code** N2504KO



## SKETCHBOOK SKILLS

Students will be shown a series of key sketching skills and explore ideas working first from photographs and then from life working around the grounds of Higham Hall. The aim is to become more confident and skilful at sketching, creating visual mementos within your sketch book of your time at Higham Hall, weather permitting.



**Date** Thu 1 May  
to Sun 4 May

**Tutor** Jason Skill

**Cost** Residential: £485  
Non-residential: £330

**Course code** A2505JS

## EMBROIDERY FOR BEGINNERS

Come and learn how to embroider in a relaxed environment. Learn stitches and techniques for the first time. This class is for students with no experience of stitching. A kit will be provided starting at £15 which will include everything you need.



**Date** Fri 2 May  
to Sun 4 May

**Tutor** Angie Burt

**Cost** Residential: £350  
Non-residential: £245

**Course code** C2505AB1

## INTRODUCING SILENT FILM

This course will introduce the range of silent films made up to the late 1920s. We will be looking at both European and American cinema, ranging across comedy, melodrama, romance, the epic and the avant-garde. Many of the iconic films of the 1930s were reacting to their silent predecessors, and we will have plenty of time to discuss the links between silent and sound movies. We will show at least three full length films: *Diary of a Lost Girl* (1929) starring the iconic Louise Brooks, Anthony Asquith's avant-garde influenced melodrama *A Cottage on Dartmoor* (1929) and Carl Dreyer's *The Passion of Joan of Arc* (1928), widely regarded as not just one of the best silent films, but one of the greatest films of all time.

**Date** Fri 2 May  
to Sun 4 May



**Tutor** Stephen Longstaffe

**Cost** Residential: £350  
Non-residential: £245

**Course code** L2505SL



## BEAD EMBROIDERY

Embroider with beads on silk fabric. Learn different stitching techniques to create intricate designs. Taster kits available from £25.00 upwards.

**Date** Sun 4 May  
to Tue 6 May



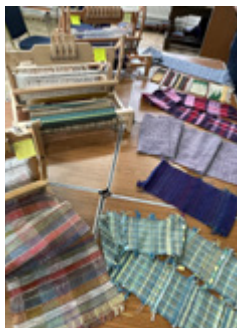
**Tutor** Angie Burt

**Cost** Residential: £350  
Non-residential: £245

**Course code** C2505AB2

## GET WEAVING!

Explore the use of colour and texture. Dress a loom. Understand how to read pattern draft. Suitable for both absolute beginners and developing weavers.



**Date** Mon 5 May  
to Thu 8 May



**Tutor** Jan Beadle

**Cost** Residential: £485  
Non-residential: £330  
(Yarns £15 available to purchase from tutor)

**Course code** C2505JB

## SPRING AND SUMMER FLOWERS IN COLOURED PENCIL AND WATERCOLOUR

Create beautiful works of art using coloured pencils and watercolour, illustrating spring and summer flowers in glorious detail. Fresh flowers will be used for reference as well as photos, paintings and demonstrations. Margaret will give individual attention to help each student create their own unique paintings to take home and frame.



**Date** Tue 6 May  
to Fri 9 May

**Tutor** Margaret Eggleton

**Cost** Residential: £505  
Non-residential: £350  
(incl. watercolour paper)

**Course code** A2505ME

## WATER IN THE LANDSCAPE

Explore the qualities of water. Surface and reflections, still water, rushing water, tidal pools and waves crashing on to rocks: all have their own character and a variety of ways to express them. Join Frances as she shares her exploratory techniques and methods. This is accessible for students of all abilities in watercolour, gouache, and acrylics. Beginners or experienced students, all are welcome.



**Date** Wed 7 May  
to Fri 9 May

**Tutor** Frances Winder

**Cost** Residential: £350  
Non-residential: £245

**Course code** A2505FW1

## FOLK N FELL

We are delighted to welcome back the popular Folk n Fell weekend. Three outstanding musicians lead a weekend of folk and acoustic ensemble playing, singing and informal sessions with time for walking. A great way to enjoy yourself, learn new material and meet new friends. With the option to take time to explore the local area on Saturday. Please note that we do not offer guided walks. Organised by Vince Taylor for the Tyne Valley Folk Train. <https://www.tynevalleyfolktrain.co.uk/>



**Date** Fri 9 May  
to Sun 11 May

**Tutors** James Fagan,  
Dave Wood and Eleanor  
Mooney

**Cost** Residential: £360  
Non-residential: £255

**Course code** M2505FF





## EXPLORING HEDGEROWS AND VERGES THROUGH ART AND SCIENCE

Enter the world of hedgerows, roadside verges and flower meadows to explore the flora and fauna of the valley landscape of the northern Lake District through science and art. On this brand new course co-taught by a scientist and an artist, venture out to investigate close-up how particular plants and animals relate in these habitats from a scientific perspective. We will use this experience as inspiration for a creative artistic response to nature. The course will stimulate questions and conversations around natural beauty including aspects of colour, pattern and visual form, providing a unique opportunity to expand your knowledge and understanding of the natural world and at the same time express your artistic vision through drawing and painting.



### VARIATIONS IN ACRYLICS

Use a wide range of acrylic painting methods, from soft watercolour-type washes, combining with collage and other materials to rag and card methods where thick paint is used to build up the surface. You will be surprised by the flexibility of this rich medium. Explore its limits and possibilities in Frances' own work and learn the experimental techniques she has to share with you. Develop and enrich your painting practice together. This is useful for students of all levels.

**Date** Sun 11 May  
to Wed 14 May



**Tutor** Dr Alex Playford  
and Lionel Playford

**Cost** Residential: £510  
Non-residential: £350

**Course code** N2505AP

**Date** Sun 11 May  
to Tue 13 May



**Tutor** Frances Winder

**Cost** Residential: £350  
Non-residential: £245

**Course code** A2505FW2

### TIME TO WRITE

A creative retreat in the idyllic surroundings of the Lake District, which has been an inspiration to generations of writers. Whether you're a beginner needing help to put your ideas on paper, or an author longing for a peaceful space, constructive feedback and the company of other writers, this is for you. There will be workshops, discussions, time to write and explore the landscape, as well as one-to-one sessions, guided by an experienced, widely published author and creative writing tutor.

**Date** Sun 11 May  
to Wed 14 May



**Tutor** Kathleen Jones

**Cost** Residential: £485  
Non-residential: £330

**Course code** L2505KJ

## GEOLOGY OF THE LAKES: AN INTRODUCTION

Have you ever wondered why the topography and geology of the Lake District and wider Cumbria area varies so much? Find out as you travel through 500 million years of geological history on this course. There will be stories of ancient oceans, volcanoes, Himalayan-scale mountain ranges, tropical seas and swamps, deserts and ice ages. The course includes field trips with a fair amount of walking – please wear appropriate walking boots and warm, waterproof clothes!

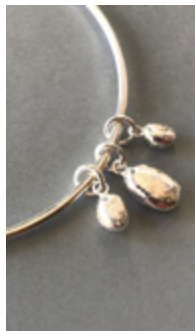
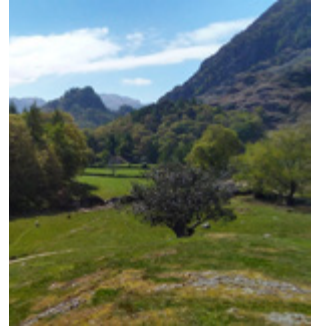
**Date** Tue 13 May  
to Fri 16 May



**Tutor** Dr. Annette  
McGrath

**Cost** Residential: £525  
Non-residential: £370  
(incl. fieldtrip)

**Course code** N2505AM



## SILVER JEWELLERY: SILVER STONE-SET STACKING RINGS, BANGLES AND EARRINGS

Aimed at beginners and intermediate students, this course in silver jewellery introduces a number of different techniques for working on both silver sheet and wire plus simple stone-setting. Students will work on three designer jewellery projects: stone-set stacking rings, a bangle and earrings. Students should have reasonable manual dexterity and be able to safely use hand saws, hammers, soldering irons and other tools.

**Date** Tue 13 May  
to Fri 16 May



**Tutor** Rebecca Halstead

**Cost** Residential: £485  
Non-residential: £330  
(Materials £52 from tutor)

**Course code** C2505RH

## INTRODUCTION TO GARDEN HISTORY

This course offers an introduction to garden history through the ages. It will examine trends in design, plant collecting, inspiration and socio-political contexts within and around gardens. Beginning with ancient Egypt, we will delve into the gardens of ancient Greece and Rome, followed by Medieval and Islamic gardens, then explore the Italian Renaissance and French Baroque, ending with the pleasure gardens of 18th century England.



**Date** Wed 14 May  
to Fri 16 May



**Tutor** Dr Alley-Marie  
Jordan

**Cost** Residential: £350  
Non-residential: £245

**Course code** N2505AMJ

## RUSKIN LACE

Ruskin Lace is a distinctive form of lace which originated as a cottage industry in the Lake District in the 1880s. You will be working on linen fabric using a combination of drawn thread and cut linen work, with the geometric designs being created using needlelace techniques specific to this type of lace. The course is suitable for both beginners, who can purchase a starter pack from the tutor (cost £15), and for those with more experience.



**Date** Wed 14 May  
to Fri 16 May



**Tutor** Karen Quickfall

**Cost** Residential: £350  
Non-residential: £245

**Course code** C2505KQ1

**Date** Fri 16 May  
to Sun 18 May

**Tutor** Karen Quickfall

**Cost** Residential: £350  
Non-residential: £245

**Course code** C2505KQ2



## EGYPT'S FEMALE PHARAOH: HATSHEPSUT

The exceptional reign of the female Pharaoh Hatshepsut (c. 1473-58 BCE) produced some of Pharaonic Egypt's most distinctive art and architecture. This course examines the historical context for Hatshepsut's time, her ambitious building and innovative artistic programme, and the officials who carried out her wishes.

**Date** Fri 16 May  
to Sun 18 May



**Tutor** Dr Campbell Price

**Cost** Residential: £350  
Non-residential: £245

**Course code** H2505CP

## VISITING LAKELAND GARDENS

Join expert horticulturalist Louise on an intimate tour of Lake District gardens, including some not normally open to the public. Meet the gardeners, discover new plants and garden design inspiration behind the gates, walls and clipped hedges of some hidden horticultural gems of the Lake District.

**Date** Fri 16 May  
to Mon 19 May



**Tutor** Louise Stoddart

**Cost** Residential: £525  
Non-residential: £370  
(incl. fieldtrips)

**Course code** N2505LS

## BOOKBINDING: RESTORATION

Most books deteriorate over time and book conservators had to develop skills in restoring them. On this course you will learn the basics of book repairs using a variety of cloths, papers, and adhesives. You will learn how to: deconstruct a book in a safe and systematic fashion; repair both individual pages and sections; prepare your book should it require resewing; replace the end papers and apply various preparatory techniques to the cover so new material can be added. Please bring with you 3-4 books in need of some TLC. The course is suitable for all levels of expertise.

**Date** Sun 18 May  
to Thu 22 May



**Tutor** Doug Mitchell

**Cost** Residential: £585  
Non-residential: £380  
(Materials at cost)

**Course code** C2505DM



## BASSOONS WITH LAURENCE PERKINS

Yes, honestly, only Bassoons allowed!

A minibus shuttle service is available to/from Penrith Rail Station.  
(+£40 BY PRIOR ARRANGEMENT ON PAYING BALANCE)

All applications to be made initially through Laurence:  
[www.laurenceperkins.com/wind-serenades](http://www.laurenceperkins.com/wind-serenades)

**Date** Sun 18 May  
to Thu 22 May



**Tutor** Laurence Perkins  
with Catriona McDermid

**Cost** Residential: £709  
Non-residential: £502

**Course code** M2505LP

## CONTEMPORARY BOOKBINDING STRUCTURES

This course will examine a range of binding styles and structures commonly used in contemporary bookbinding or book artists' practices. The work is distinguished by an innovative, exploratory approach using materials in unorthodox and novel ways with potential for further adaptation and modification. The course will be practical and hands-on, using paper, board, card and cloth, assembled with adhesive, thread or friction. Suitable for beginners and those with previous bookbinding experience.

**Date** Thu 22 May  
to Sun 25 May



**Tutor** Tom McEwan

**Cost** Residential: £497  
Non-residential: £342  
(incl. materials)

**Course code** C2505TM





### ATTIC WINDOWS QUILT

Attic Windows is a traditional quilt pattern that creates a three-dimensional window-like quilt design. It is a great pattern to show off large fabric designs, or even cut up a panel for the panes so that it looks like the viewer is looking through a window. There will time to fully make one or more quilts. Students can also bring their own project if preferred.

**Date** Thu 22 May  
to Sun 25 May



**Tutor** Lis Binns

**Cost** Residential: £485  
Non-residential: £330

**Course code** C2505LB

### A WEEKEND FOR FLUTES WITH PIANO

A friendly and relaxed weekend of flute playing, around Grade 3 and above, to build confidence and improve performing skills. Ask questions about tone and technique etc. with daily warm up sessions. Enjoy playing in a flute ensemble and have the chance to play and improve a solo piece of your own choice in the flute and piano sessions. We end with an informal performance just between ourselves.

**Date** Fri 23 May  
to Sun 25 May



**Tutor** Rachel Holt with  
John Gough (piano)

**Cost** Residential: £400  
Non-residential: £295

**Course code** M2505RH

### WOODLAND FLORA IDENTIFICATION

This course provides an introduction to the skills and knowledge required to identify wildflowers. Focusing on woodland plants that emerge and flower early in the growing season, we will also study a range of vascular plants including herbs, grasses, ferns, etc. also found in this habitat. The course will include classroom sessions where we explore the structures of plants. You will learn how to use a floral key (plant ID book), a useful tool to help you to identify plants. There will be opportunities to put your learning into practise when we visit some woodlands to look at wildflowers. We can also share useful tips to help speed up the process of identifying species in the field.

**Date** Sun 25 May  
to Wed 28 May



**Tutor** Stuart Colgate

**Cost** Residential: £515  
Non-residential: £360  
(incl. fieldtrips)

**Course code** N2505SC



## SKETCHING AND PAINTING THE GREAT OUTDOORS

Explore the varied and wonderful landscapes of the northern Lake District from streams and riverbanks to lakeside fells by way of woodland through plein-air sketching and studio painting. Lionel will help you develop more powerful ways to express your feelings about the outdoor world, seen from afar or close-up, using traditional drawing and painting media using demonstrations of techniques on location and methods and philosophies of artistic design in studio painting.

**Date** Sun 25 May  
to Thu 29 May



**Tutor** Lionel Playford

**Cost** Residential: £625  
Non-residential: £420  
(incl. fieldtrips)

**Course code** A2505LP

## SUNDAY LECTURE UNDERSTANDING THE ANTHROPOCENE

What is the anthropocene and why does it matter? Dr Simon Carr of the University of Cumbria is a geographer who specialises in understanding landscapes and the processes that shape them. First coined in the 1980s, the Anthropocene is a term used by earth and social scientists, politicians and economists to describe the growing human influence on the five earth systems (atmosphere, cryosphere, hydrosphere, biosphere and geosphere) which interact to produce the environments we are familiar with. This talk will explore what this means for the places we know and love.

**Date** Sun 25 May  
from 2pm - 4pm



**Tutor** Dr Simon Carr  
FRGS, FRSA

**Cost** £10 incl.  
refreshments

**Course code** D2505SC

## BEGINNERS AND IMPROVERS UKULELE

The course will cater for beginners (starting from scratch, learning together with fun and accessible rock and pop songs) and anyone who has already got to grips with the basic chords and would like to improve and develop their skills with new chords, alternative fingerings and tablature.



**Date** Sun 25 May  
to Tue 27 May



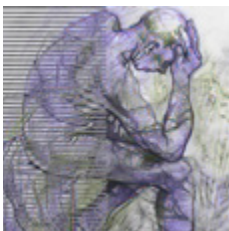
**Tutors** Richard Sabey  
and Jennifer Pugh

**Cost** Residential: £400  
Non-residential: £295

**Course code** M2505RS

## LIFE DRAWING

This course offers an opportunity for learners of all abilities to develop drawing direct from a life model. Life drawing is a traditional skill that increases accuracy within observational drawing and feeds into all areas of art practice. You will explore drawing techniques that develop both mark-making and measuring skills. You will be encouraged to step out of your comfort zones and as such this course is ideal for both beginners and practiced artists. A life model will be present throughout.



**Date** Tue 27 May  
to Fri 30 May



**Tutor** Catherine  
MacDiarmid

**Cost** Residential: £545  
Non-residential: £390

**Course code** A2505CM

## BUTTERFLIES, MOTHS AND THE COUNTRYSIDE OF NORTH WEST CUMBRIA

For lovers of natural history and the countryside, this course is also an eye-opener for anyone wishing to improve their awareness of the natural world. Walk contrasting Cumbrian sites where conservation management has helped the habitats of rare butterflies including the Marsh Fritillary, Mountain Ringlet, Small Blue and The Forester. Lecture presentations in the evening will consider wider conservation issues.

**Date** Thu 29 May  
to Sun 1 Jun



**Tutor** Chris Winnick

**Cost** Residential: £515  
Non-residential: £360  
(incl. field trip)

**Course code** N2505CW

## EXPRESSIVE SEMI-ABSTRACT SEASCAPES IN MIXED MEDIA

This short mixed media seascape course offers an opportunity to explore lots of creative and expressive art techniques in a really exciting way with seascapes! Robert will teach you how to engage with your subject in greater depth, incorporating meaning and feeling with a semi-abstract approach. You will work both in the studio and (weather permitting) at locations along the Cumbrian coast. This course is for students who wish to bring greater emotional timbre to their paintings and are comfortable pushing their own creative boundaries. Students who attend this course will be gently challenged to question and explore alternatives to how they currently paint.

**Date** Thu 29 May  
to Sun 1 Jun



**Tutor** Robert Dutton

**Cost** Residential: £515  
Non-residential: £360  
(incl. fieldtrip)

**Course code** A2505RD



## MUSICAL DEDICATIONS

This course will take a different slant, unveiling a series of classical works inspired by, and dedicated to, a particular person. This may be another composer, a great performer (pianist, violinist, singer, conductor) or a romantic connection. A wide historical range will be covered, from the 16th to 20th centuries, and a wealth of beautiful music.

**Date** Fri 30 May  
to Sun 1 Jun



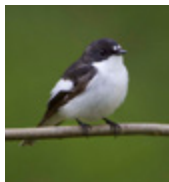
**Tutor** Chris Rodwell

**Cost** Residential: £350  
Non-residential: £245

**Course code** M2505CR

## LAKELAND BIRDS

Magnificent scree-covered slopes, tranquil lakes, hanging oak woodlands and dramatic sea cliffs are just a few of Cumbria's habitats which we will be exploring throughout this five-day course. We will take short local trips to sample the best of Cumbria's summer birdlife, including wheatears, ring ouzels, redstarts, dippers, pied flycatchers wood warblers and ospreys to name a few plus, of course, the unforgettable 'sea-bird city' at St Bees Head. Although most birds are busy with parental duties, many are still singing and we will be spending time identifying by both sight and sound. Please note, fieldtrips will involve a fair amount of walking.



**Date** Sun 1 Jun  
to 9am Fri 6 Jun



**Tutor** Keith Offord

**Cost** Residential: £715  
Non-residential: £430  
(incl. fieldtrips)

**Course code** N2506KO

## BOTANICAL ILLUSTRATION - HERBS AND SPICES USING COLOURED PENCILS



Herbs are the forgotten 'poor relations' of the botanical painting world. They may not be as 'showy' as the more flamboyant flowers, but they are nevertheless beautiful – and very interesting. On this course we take the opportunity to study a few herbs in detail and record them in coloured pencils and graphite. We will also add some 'spice' to the course with the introduction of items such as chillies, peppers, ginger, lemon grass, star anise etc. Plant availability will depend on the weather, what is available in our gardens and grocery stores at the time. If you have herbs in your garden do bring some along. This course will be a great way to explore a multitude of green shades as well as learning how to cope with tiny detail. Group demonstrations and individual tuition will be offered throughout.

**Date** Mon 2 Jun  
to Fri 6 Jun



**Tutor** Janie Pirie FSBA  
RHS/GM UKCPS FLS

**Cost** Residential: £585  
Non-residential: £380

**Course code** A2506JP1



## CHINE COLLÉ PRINTMAKING

Chine collée is a collage technique that adds extra layers to your prints. It is a great method for introducing areas of specific colour, text or photographic images into your prints. Chine collée can be incorporated into many different types of relief and intaglio printmaking, so whether you are doing drypoint, collagraph, lino or woodcut you will be able to extend your prints in new and exciting ways. We will create our own decorative collage papers as well as exploring a range of 'ready made' papers with images, text, maps and more. These papers will be incorporated into both relief and intaglio prints, so each student will take home a series of unique images.

**Date** Mon 2 Jun  
to Thu 5 Jun



**Tutor** Emily Harvey

**Cost** Residential: £505  
Non-residential: £350  
(incl. materials)

**Course code** C2506EH



## SUMMER LANDSCAPES IN MIXED MEDIA - AN EXPLORATORY APPROACH

This course will introduce a variety of creative ways to approach landscape in the summer months. We will examine different aspects of the summer landscape through observation, memory, and process. The course will cover expressive techniques and ways of working that will lead you to find that initial idea and explore it using colour theory, mark-making and composition.

**Date** Thu 5 Jun  
to Sun 8 Jun



**Tutor** Alex Jakob-Whitworth

**Cost** Residential: £485  
Non-residential: £330

**Course code** A2506AJW

## IDENTIFYING FERNS

This is a course for anyone who would enjoy gently walking through woodlands looking for and observing this generally little known family of plants. You will learn to recognise where ferns grow and how different environments play host to different fern species. Course members will become familiar with the variations that exist in the shapes and structures of ferns as well as understanding their unique form of reproduction. For those interested in growing ferns we will include a session looking at how you propagate ferns from spores. Should time permit we will attempt to record the ferns that grow at Higham.



**Date** Thu 5 Jun  
to Sun 8 Jun



**Tutor** Paul Nichol

**Cost** Residential: £515  
Non-residential: £360  
(incl. fieldtrips)

**Course code** N2506PN

## ILLUSTRATING SHELLS, FOSSILS AND INSECTS USING COLOURED PENCIL

After this three-day course, you may think again about some of the smaller things that often escape our notice in the natural world. Shells offer up the most amazing colours and patterns and fossils allow us to see millions of years in a fragment whilst insects have the most intricate shapes and iridescent colours that are a joy to illustrate. Bees, butterflies, moths, wasps, caterpillars, snails, ladybirds – the insect kingdom is vast. Students are encouraged to bring favourite shells or fossils; insects are very difficult to draw from life so we will need to work from very good photographs. Start gathering images from nature magazines or search for royalty free photographs online, or try taking your own. Working in both graphite and coloured pencils you will be shown how to draw and colour accurately and make your subjects come to life. Group demonstrations and individual tuition will be given throughout.

**Date** Fri 6 Jun  
to Mon 9 Jun



**Tutor** Janie Pirie FSBA  
RHS/GM UKCPS FLS

**Cost** Residential: £485  
Non-residential: £330

**Course code** A2506JP2



## A DECADE OF HIT OPERAS

The 1870s began with Verdi's spectacular Aida, the epitome of Grand Opera. Bizet moved in a different direction with the low-life realism of Carmen in 1875. Tchaikovsky's Eugene Onegin (1878) brings Pushkin's tale to life in a series of lyric scenes, one of which is Tatyana's moving letter scene.

**Date** Sun 8 Jun  
to Tue 10 Jun



**Tutor** Ian France

**Cost** Residential: £350  
Non-residential: £245

**Course code** M2506IF

## ENAMEL BOWLS LARGE AND SMALL

This course will focus on making fired enamel copper bowls of different sizes. While there will be a range of sizes available to work with, those who have not made an enamel bowl before will be encouraged to start with a small bowl. Those with some experience of making small enamel bowls will have the opportunity to move onto very large bowls. We will troubleshoot the challenges of working at this scale and experiment with enamel colours and techniques used in firing larger items to achieve captivating effects. Students will be encouraged to develop their own decorative styles and techniques, supported by Sharon's wide-ranging specialist knowledge and expertise. Please note this course is NOT for beginner enamellers. All materials available to purchase at cost from the tutor.

**Date** Sun 8 Jun  
to Sat 14 Jun



**Tutor** Sharon Ford

**Cost** Residential: £820  
Non-residential: £510

**Course code** C2506SF1



## SUMMER LANDSCAPE IN DRY COLOUR: COLOURED PENCILS AND OIL PASTELS

A chance to work in both these rewarding media – neither apt to run out of control. Coloured pencil is a delight! The process of building colour can be exciting and contemplative according to the technique used. Oil pastel produces an effect of oil painting without the problem of drying. Its rich colouring is vibrant.

**Date** Mon 9 Jun  
to Wed 11 Jun



**Tutor** Linda Birch

**Cost** Residential: £350  
Non-residential: £245

**Course code** A2506LB

## ACOUSTIC GUITAR - BASICS AND BEYOND

This course will aim to help each student improve their playing. We will cover aspects such as warm ups and technique, learning the notes on the neck, expanding your chord knowledge, developing your strumming and rhythm, fingerpicking and how to learn a song or solo tune. We will also look at music theory to help underpin your musical knowledge. Teaching will be tailored to each student's needs and level, and there will be no pressure to perform. Students are welcome to bring steel or nylon string guitars.



**Date** Tue 10 Jun  
to Fri 13 Jun



**Tutor** Jonny Flockton

**Cost** Residential: £485  
Non-residential: £330

**Course code** M2506JF

## RUSKIN LACE

Ruskin Lace is a distinctive form of lace which originated as a cottage industry in the Lake District in the 1880s. You will be working on linen fabric using a combination of drawn thread and cut linen work, with the geometric designs being created using needlelace techniques specific to this type of lace. The course is suitable for both beginners, who can purchase a starter pack from the tutor (cost £15), and for those with more experience.

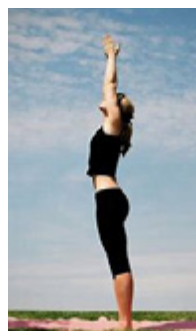
**Date** Wed 11 Jun  
to Fri 13 Jun



**Tutor** Karen Quickfall

**Cost** Residential: £350  
Non-residential: £245

**Course code** C2506KQ



## MIDSUMMER YOGA AND WALKING

A perfect mix of hatha yoga sessions (working on postures, breathing exercises and relaxation) and guided hill walks of up to 5 miles, sometimes over rough and steep ground (requiring a reasonable level of fitness) among the peaceful northern fells - which will leave you feeling supple, relaxed and refreshed! Suitable for beginners and experienced. Courses run in spring, mid- and late-summer.

**Date** Fri 13 Jun  
to Tue 17 Jun



**Tutors** Gill and Alan  
Hunter

**Cost** Residential: £635  
Non-residential: £430  
(incl. minibus trips)

**Course code** F2506GH

## FINDING MY VOICE: HOW I RELATE TO OTHERS

This session offers an introduction to understanding how individuals behave in relationships. Using Transactional Analysis concepts, we will explore how learned behaviours become repeated and how we can begin to break the cycle of negative and adverse relationships.

**Date** Sat 14 Jun  
from 10am - 4pm



**Tutor** Lina Mookerjee

**Cost** £95 incl. lunch  
and refreshments

**Course code** D2506LM

## UPHOLSTERY

You will learn to strip a small item of furniture (e.g. a chair, stool, ottoman or headboard), tackle interior paddings and rebuild it using traditional or modern upholstery techniques as appropriate. You bring the item of furniture you want to restore and the fabric you would like to use; all the fillings, specialist tools, technical materials and expertise will be provided. In order to ensure your time is well spent. You must contact Cathy directly prior to your course to discuss your project needs. Contact details will be provided on booking.

**Date** Sat 14 Jun  
to Mon 16 Jun



**Tutor** Cathy Newbery

**Cost** Residential: £350  
Non-residential: £245

**Course code** C2506CN



## GLORIOUS GOUACHE

The course explores how flexible and useful gouache can be as a painting medium. Gouache can be delicate and watercolour like or used to make highly detailed images. It can appear flat, precise and poster-like or bold, splashy and expressive. You can also paint on coloured papers as well as the usual white watercolour paper. Jason is there to show you how to get the most out of the medium and explain its idiosyncrasies so you can paint with greater confidence and skill and fall in love with this glorious medium.

**Date** Mon 16 Jun  
to Wed 18 Jun



**Tutor** Jason Skill

**Cost** Residential: £350  
Non-residential: £245

**Course code** A2506JS

## ARTISTS' GARDENS

Join our horticultural expert Louise and resident art historian Lizzie on this special course looking at artists' gardens. Over 2 full days we will visit a diverse selection of gardens in Cumbria and the Scottish Borders, from John Ruskin's garden at Brantwood and the garden at Lawson Park created by artist and filmmaker Karen Guthrie to Charles Jencks' Crawick Multiverse and what is regarded as Ian Hamilton Finlay's greatest artwork, his garden at Little Sparta. In the evenings we will explore the subject further through presentations and discussion.

**Date** Tue 17 Jun to  
9am Fri 20 Jun



**Tutor** Louise Stoddart  
and Dr Elizabeth Fisher

**Cost** Residential: £525  
Non-residential: £370  
(incl. fieldtrips)

**Course code** N2506LF



### TORCH-FIRED ENAMEL BEADS

Make your own enamel beads then create beautiful jewellery from them under the expert guidance of Sharon Ford, leading enameller and restorer in enamels and gilding. Enamelling involves the fusion of jeweller's quality vitreous enamel with copper and silver through firing. When heat is applied, the enamels soften and flow, and the varying presence of different components creates a spectacular range of visual effects so that every bead created is unique. Experiment with different effects and colours for exciting necklace and earrings, or an unusual pendant. Thread your beads professionally, using a variety of findings. Inspirational and fun for both existing beaders and newbies. All materials are supplied at cost from the tutor.

**Date** Wed 18 Jun  
to Sun 22 Jun



**Tutor** Sharon Ford

**Cost** Residential: £610  
Non-residential: £405  
(Incl. first bottle of MAP gas. Additional materials £50 depending on project)

**Course code** C2506SF2



### PAINTING THE SUMMER GARDEN

A joyous course using your own choice of media - with the inspiration of paintings of gardens from many eras. We will work in the studio from a wide selection of reference material and your own garden images and in the beautiful garden at Higham Hall – weather permitting! The course will include colour theory.

**Date** Wed 18 Jun  
to Fri 20 Jun



**Tutor** Ceri Allen

**Cost** Residential: £350  
Non-residential: £245

**Course code** A2506CA

### THE PHILOSOPHER'S GUIDE TO THE GALAXY: PHILOSOPHY, SCIENCE AND THE ABSURD

Is there an answer to the question of life, the Universe and everything? If the answer is 42, then what is the question? In this course, we will look seriously at what it means to question everything. From scientific attempts to provide a "theory of everything" to comedic responses to the inexplicability of "it all". In doing so, we must adopt a view from outside, what some have called a "martian eye view" of life here on Earth. It is fitting then, that our guides will be Arthur Dent, Ford Prefect, Fenchurch, and Marvin the Paranoid Android. Through them, we will come to see the familiar as strange and the strange as familiar. To put it another way, the aim is to turn "ha ha" moments into "aha" moments. The course will appeal to anyone seeking a greater understanding of the philosophy of science, Douglas Adams' masterpiece, and/or the nature of humour. No existing philosophical knowledge (or babel fish) required.

**Date** Fri 20 Jun  
to Sun 22 Jun



**Tutor** Dr Alex Carter

**Cost** Residential: £350  
Non-residential: £245

**Course code** L2506AC

### SCULPTURAL NEEDLEFELT

Create a characterful sculpture c.12-18 inches in size using wool fibres based on a wire armature. There will be plenty of sources of inspiration and support to try one of a range of stylistic approaches, from art deco abstraction to stone carving and caricature. Sympathetic, patient and knowledgeable guidance from an outstanding felt artist ([www.furzie.co.uk](http://www.furzie.co.uk)). All welcome, no experience with textiles necessary.



**Date** Fri 20 Jun  
to Mon 23 Jun



**Tutor** Furzie aka Michelle Hickman

**Cost** Residential: £485  
Non-residential: £330  
(Materials available to purchase from tutor c£30)

**Course code** C2506MH

### SUMMER STRING ORCHESTRA

Join us at Higham to experience the glories of the string orchestra repertoire. We will study Mozart's Adagio and Fugue, Heinrich Biber's Battalia, John Ireland's Concertino Pastorale and Samuel Barber's ever popular Adagio for Strings. You should have some orchestral experience for this course. Please state your instrument when applying and whether you prefer 1st or 2nd violin parts.

**Date** Sun 22 Jun  
to Tue 24 Jun



**Tutor** Louise Latham

**Cost** Residential: £315  
Non-residential: £225

**Course code** M2506LL

### WATERCOLOURS WITH CONFIDENCE

Paint in a variety of settings utilising the studio and Higham's grounds. Enjoy demos, paint-alongs and working en plein-air. You can bring your own reference materials, work from life or follow tutor-led demonstrations.

Come along to develop skills and improve your confidence. For all levels.



**Date** Mon 23 Jun  
to Fri 27 Jun



**Tutor** Jane Beech

**Cost** Residential: £585  
Non-residential: £380

**Course code** A2506JB



### SUMMER QUILTER'S RETREAT

Bring your own project to work on or choose from a selection of projects available to try...perhaps a lap quilt or appliqué which could make a cushion or bag panel. Relax with new friends and old as you sew your day away.

**Date** Mon 23 Jun  
to Fri 27 Jun



**Tutor** Lis Binns

**Cost** Residential: £585  
Non-residential: £380

**Course code** C2506LB1

## SOUNDS EASY

Easy listening music for voices in 2 or 3 parts depending on ability, but particularly aimed at those who want to sing in harmony at an easy level. We will sing a variety of music drawn from the Great American Songbook, pop classics, ballads etc. The emphasis is on a relaxing but fun course.

**Date** Wed 25 Jun  
to Fri 27 Jun



**Tutor** Chris Hale

**Cost** Residential: £350  
Non-residential: £245

**Course code** M2506CH

## SEWING ACCESSORIES

Every quilter needs their accessories. Choose from making a board bag, pincushion and thread/scrap keeper, a needle park, a block keeper, a clip cushion, a machine mat, a sewing machine cover, and an ironing pad. Students can also bring their own project if preferred.



**Date** Fri 27 Jun  
to Mon 30 Jun



**Tutor** Lis Binns

**Cost** Residential: £485  
Non-residential: £330

**Course code** C2506LB2

## FOLK SINGING

A gentle introduction to singing folk music in three- and four-part harmony! Can't read music? No problem - folk is an oral tradition, and we teach everything by ear. Learn how to warm up your voice, then sing in rounds and in parts, as you become acquainted with a wonderful folk repertoire with two tutors providing plenty of support and guidance. Suitable for all, even non-musicians. Will and Rosie have been professional performers for the last 12 years and have a wealth of experience to offer their students.

**Date** Fri 27 Jun  
to Sun 29 Jun



**Tutor** Will Finn  
and Rosie Calvert

**Cost** Residential: £400  
Non-residential: £295

**Course code** M2506RC

## CERAMIC SCULPTURE: GET A-HEAD!

Make face and head sculptures up to 30cm tall to be glazed and fired in a raku kiln at the end of the course. Make a single larger piece using Cumbrian brick clay, fired later by us when dry. Enjoy the creative challenge of working on a large scale in 3 dimensions supported by experienced and supportive tutors.



**Date** Fri 27 Jun  
to 9am Fri 4 Jul



**Tutor** Martin Copley with  
Kay Latto

**Cost** Residential: £965  
Non-residential: £585  
(incl. materials)

**Course code** C2506MC

## JANE AUSTEN - A CELEBRATION OF ONE OF OUR GREATEST NOVELISTS



This year is the 250th anniversary of the birth of Jane Austen, perhaps the best and certainly the most loved of English novelists. From her Hampshire cottage she wrote six novels of family and social life in her time, with such fidelity and human understanding that her work seems to touch upon profound truths of human nature and experience, but always with a kindness and good humour. This course will celebrate her genius with a close look at her novels, including everyone's favourite *Pride and Prejudice*, in the context of her life and times.



**Date** Mon 30 Jun  
to Wed 2 Jul

**Tutor** Prof. Bill Jones

**Cost** Residential: £350  
Non-residential: £245

**Course code** L2506BJ

## STOICISM RETREAT: IN THE FACE OF ADVERSITY

In this retreat you will explore the origins and principles of Stoic philosophy through engaging sessions on resilience, the dichotomy of control, and the role of virtue in adversity. Participate in guided meditations, group discussions, and practical journaling exercises to deepen your understanding. Discover modern applications of Stoicism and build supportive networks. Conclude with personal reflections and strategies to integrate Stoicism into daily life, fostering resilience and clarity.



**Date** Tue 1 Jul  
to Fri 4 Jul

**Tutor** Darren Harper

**Cost** Residential: £485  
Non-residential: £330

**Course code** L2507DH

## WEDDING FLOWERS: SUSTAINABLE FLOWER ARRANGEMENTS

Gain the knowledge, experience and confidence to create your own unique beautiful wedding florals using local and British seasonal flowers. This course will touch on growing, sourcing and sustainability and help with tips and techniques for creating mood boards, cutting and designing, planning and practicalities. Sarah is an eco-friendly freelance wedding and events studio florist with over 20 years of experience in the industry.



**Date** Tue 1 Jul  
to Thu 3 Jul

**Tutor** Sarah Smith

**Cost** Residential: £410  
Non-residential: £305  
(incl. materials)

**Course code** C2507SS

## TALK & TEA: A PHILOSOPHER'S GUIDE TO BOREDOM

In this talk we will explore insights from Bertrand Russell and Fernando Pessoa. Russell views boredom as a barrier to happiness, urging us to seek meaningful pursuits, while Pessoa invites us to embrace boredom as a space for introspection and creativity, leading to self-discovery. Throughout the session, we'll encourage participants to rethink their experiences with boredom, uncovering its potential for personal growth and deeper engagement with life. Engage in thoughtful discussions on this often-overlooked aspect of human experience.



**Date** Fri 4 Jul  
from 2pm - 4pm

**Tutor** Darren Harper

**Cost** £18 or £32 for 2 (incl. refreshments)

**Course code** D2507DH



## WIND SERENADES SUMMER SCHOOL

Wind chamber music course for high-advanced amateur players (diploma-standard level 1 minimum) to work in-depth on substantial original repertoire with the highest level of tuition. All works studied will be performed complete in informal concerts on the last day. The course also includes a mid-week tutors' concert (see below A VERY SPECIAL WOODWIND RECITAL 9 Jul).

All applications to be made initially through Laurence to ascertain ensemble line-up: [www.laurenceperkins.com/wind-serenades](http://www.laurenceperkins.com/wind-serenades) A minibus shuttle service is available to/from Penrith Rail Station. (+£40 BY PRIOR ARRANGEMENT ON PAYING BALANCE)

**Date** 4:30pm Sun  
6 Jul to 3:45pm Fri  
11 Jul



**Tutors** Laurence Perkins with Philippa Davies, Colin Honour and Jan Willem Nelleke

**Cost** Residential: £913  
Non-residential: £655

**Course code** M2507LP



## UPHOLSTERY WORKSHOP

You will learn to strip a small item of furniture (e.g. a drop in dining seat or dining chair, stool), tackle interior paddings and rebuild it using traditional or modern upholstery techniques as appropriate. You bring the item of furniture you want to restore and the fabric you would like to use; all the fillings, specialist tools, technical materials and expertise will be provided. In order to ensure your time is well spent, you must contact Cathy directly prior to your course to discuss your project needs. Contact details will be provided on booking.

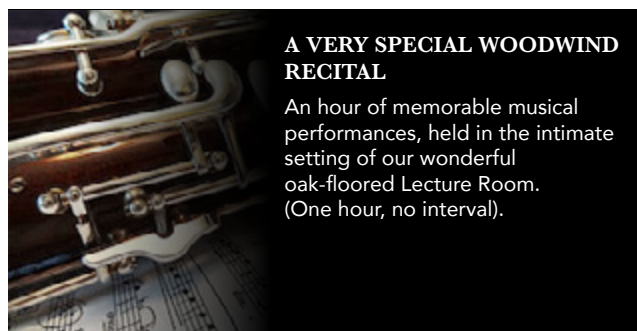
**Date** Mon 7 Jul  
10am - 4pm



**Tutors** Cathy Newbury

**Cost** £95 incl. lunch and refreshments

**Course code** D2507CN



## A VERY SPECIAL WOODWIND RECITAL

An hour of memorable musical performances, held in the intimate setting of our wonderful oak-floored Lecture Room. (One hour, no interval).

**Date** Wed 9 Jul  
8:15pm - 9:30pm



**Performers** Laurence Perkins (Bassoon), Philippa Davies (Flute), Colin Honour (Clarinet), Jan Willem Nelleke (Piano)

**Cost** £15 Bar open

**Course code** D2507LP

**BOOKBINDING: INTERMEDIATE (LIBRARY STYLE BINDING)**

In this follow up from the beginner's course we will concentrate on one significant change in the book structures of the 19th century. In this period a book structure was developed to counteract heavy use by the public, many of whom had no understanding or sympathy with the books they used which was why this structure became very popular with public and private libraries. The Library style buckram binding is one of the most satisfying book structures there is. It gives the book maximum support from head to tail and uses the combination of endpapers, spine lining's and boards which allow it to stand alone, unsupported, which was why this structure evolved from using many of the features of account book binding.

**Date** Fri 11 Jul  
to Mon 14 Jul



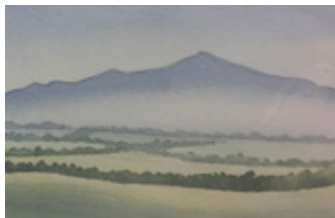
**Tutors** Doug Mitchell

**Cost** Residential: £485  
Non-residential: £330  
(Materials available to purchase from tutor at cost)

**Course code** C2507DM1

**WATERCOLOUR LANDSCAPES FOR BEGINNERS**

Learn how to paint a simple but effective landscape including skies, hills, trees, hedgerows and other landscape features. This is suitable for beginners and for intermediate level painters who want to brush up their techniques. Step-by-step demonstrations and individual help given throughout.



**Date** Fri 11 Jul  
to Sun 13 Jul



**Tutor** Jane Beech

**Cost** Residential: £370  
Non-residential: £265  
(incl. materials)

**Course code** A2507JB

**PILATES AND NORDIC WALKING**

Pilates and Nordic walking are a perfect combination for building core strength and fitness. A morning class of pilates followed by an afternoon discovering the technique and benefits of Nordic Walking. Once the correct technique is mastered, participants will find that over 85% of body weight is supported, meaning that this form of exercise is excellent for those with knee & hip problems. There will be an opportunity to practice Nordic walking each day. Great for all ages. Poles provided.

**Date** Sat 12 Jul  
to Tue 15 Jul



**Tutor** Susie Gale

**Cost** Residential: £505  
Non-residential: £350

**Course code** F2507SG

**BOOKBINDING: RESTORATION**

Most books deteriorate over time and so book conservators had to develop skills in restoring them. On this course you will learn the basics of book repairs using a variety of cloths, papers, and adhesives. You will learn how to: deconstruct a book in a safe and systematic fashion, repair both individual pages and sections, prepare your book should it require resewing, replace the end papers, undertake various techniques of preparation to the cover in order to allow new material to be added. And so please bring with you 3-4 books in need of some TLC. The course is suitable for all levels of expertise.

**Date** Mon 14 Jul  
to Thu 17 Jul



**Tutors** Doug Mitchell

**Cost** Residential: £485  
Non-residential: £330  
(Materials available to purchase from tutor at cost)

**Course code** C2507DM2

## CALICO GARDENS EMBROIDERY

Calico embroidery is worked in neutral shades of cream and beiges only. It relies upon textured stitches and its own unique 3D elements to add interest to the embroideries. It is suitable for all levels of embroiders and a kit can be purchased for first time students.



**Date** Tue 15 Jul  
to Fri 18 Jul



**Tutor** Angie Burt

**Cost** Residential: £485  
Non-residential: £330

**Course code** C2507AB1

**Date** Fri 18 Jul  
to Sun 20 Jul

**Tutor** Angie Burt

**Cost** Residential: £350  
Non-residential: £245

**Course code** C2507AB2

## IDENTIFYING WILDFLOWERS - SUMMER

This course provides an introduction to the skills and knowledge required to identify wildflowers. We shall cover a range of vascular plants including herbs, grasses and ferns from a range of habitats. The course will include classroom sessions where we explore the structures of plants. We shall also learn how to use a floral key (plant ID book), a useful tool to help you to identify plants. To put your learning into practise we shall visit a range of habitats to look at wildflowers. We can also share useful tips to help speed up the process of identifying species in the field. Stuart is a freelance ecologist, with particular expertise in botanical and habitat surveys. He is also a member of the Flora of Cumbria Recording Group.

**Date** Tue 15 Jul  
to Fri 18 Jul



**Tutor** Stuart Colgate

**Cost** Residential: £515  
Non-residential: £360  
(incl. fieldtrips)

**Course code** N2507SC



## LEATHERWORK: HAND-STITCHED LEATHER POUCH

Learn the traditional craft of leatherwork and make a quality item that will last you for years. In this course you will learn how to make your own hand-stitched leather pouch. A pouch for pens, your glasses or a small bag.

**Date** Wed 16 Jul  
to Fri 18 Jul



**Tutor** Roslyn Whiting

**Cost** Residential: £375  
Non-residential: £270  
(incl. materials)

**Course code** C2507RW

## SUMMER YOGA RETREAT

An opportunity to explore and deepen your understanding of the concept of viniyoga, the accessible approach to yoga developed by Sri TKV Desikachar; adapted to the individual's ability and needs. All levels welcome.

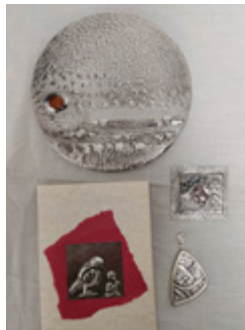
**Date** Fri 18 Jul  
to Sun 20 Jul



**Tutor** Amanda Oakes

**Cost** Residential: £350  
Non-residential: £245

**Course code** F2507AO



## PEWTERWORK

Learn to give form and texture to flat sheet metal. Popularised by the Arts and Crafts Movement, pewterwork uses no heat, heavy tools, or machinery. Simple hand-held tools and an ability to follow direction are all that are needed to produce decorative pieces to wear or give as gifts. All materials are provided.

**Date** Fri 18 Jul  
to Sun 20 Jul



**Tutor** Tilly Wilkinson

**Cost** Residential: £380  
Non-residential: £275  
(incl. materials)

**Course code** C2507TW

## PASTELS PURE AND SIMPLE

Learn and develop a mastery of chalk pastel on its own, delivering vibrant colours across a wide range of tones. Work from landscape and still life under guidance of an artist who continues the authentic approach of the much-missed Christopher Assheton-Stones. All levels of ability and individualised approach is offered for previous attendees.



**Date** Sun 20 Jul  
to Fri 25 Jul



**Tutor** Graham Oliver

**Cost** Residential: £675  
Non-residential: £390

**Course code** A2507GO

## VISITING LAKELAND GARDENS

Join expert horticulturalist Louise on an intimate tour of Lake District gardens, including some not normally open to the public. Meet the gardeners, discover new plants and garden design inspiration behind the gates, walls and clipped hedges of some hidden horticultural gems of the Lake District.

**Date** Sun 20 Jul  
to Wed 23 Jul



**Tutor** Louise Stoddart

**Cost** Residential: £525  
Non-residential: £370  
(incl. fieldtrips)

**Course code** N2507LS



## SUNDAY LECTURE

### TREES, FAIRIES AND ECOLOGICAL PERSPECTIVES IN THE WORK OF BEATRIX POTTER

This talk will explore Beatrix Potter's importance as an ecological writer, looking at how her work encourages early ecological awareness and what is now called 'nature literacy' in young readers. The talk will focus on the way in which Potter uses trees in her books in ways which develop an understanding of natural ecosystems, animal habitats, and seasonal change. It will also though look at the way in which Potter's work draws on and responds to older cultural associations, which connect trees and woodland spaces to fairies and fairy magic.



**Date** Sun 20 Jul  
2pm - 4pm

**Tutor** Prof. Penelope  
Bradshaw

**Cost** £10 each incl.  
refreshments

**Course code** D2507PB

## TRADITIONAL STAINED GLASS

Design and make a traditional stained-glass panel using key skills that will enable you to construct more elaborate projects later. Learn about design principals before creating and preparing your pattern, decide which glass to use and how to cut it safely, become confident in the leading and soldering process and finally, clean and polish your panel ready to be displayed in your home. No experience required – be guided in all aspects by local stained glass artist, Nikki Clark. Returning students are welcome to bring their own designs to work on with Nikki's support; please contact Nikki in advance to discuss ideas and options. Contact details from office.



**Date** Sun 20 Jul  
to Fri 25 Jul

**Tutor** Nikki Clark

**Cost** Residential: £710  
Non-residential: £480  
(incl. materials)

**Course code** C2507NC



## THE SYMPHONY FROM SCHUBERT TO DVORAK

A strong lyrical thread runs through the works of those composers who stayed true to the symphony in the 19th century. Starting with Schubert's 'Unfinished' Symphony we will enjoy the pictorial aspects of Mendelssohn's Italian and Schumann's Rhenish symphonies, before concluding with two sometimes underrated masterpieces, Brahms' 3rd and Dvorak's 7th.



**Date** Wed 23 Jul  
to Fri 25 Jul

**Tutor** Ian France

**Cost** Residential: £350  
Non-residential: £245

**Course code** M2507IF

## BLOW! INTERMEDIATE WOODWIND WEEKEND

A light-hearted woodwind weekend designed to build confidence and improve ensemble skills. This course is intended for players of flute, oboe, clarinet or bassoon, at around Grade 3 – 6 standard. Repertoire consists of light classical and traditional pieces, many of which will have been specially arranged to suit the combination of instruments and ability level of those taking part. Catriona will also lead the STARTERS' MINI-ORCHESTRA course, 22-24 August.

**Date** Fri 25 Jul  
to Sun 27 Jul



**Tutor** Catriona Melville-  
Mason

**Cost** Residential: £350  
Non-residential: £245

**Course code** M2507MM

## INTERMEDIATE PALETTE KNIFE EXPERIMENTS

Use the palette knife as a tool to add interest and impact to your mark-making and to enhance your creative repertoire. Build upon application techniques from the introductory course (e.g. scrape and spread technique) and consolidate by creating a piece of work that involves textures and layers using the addition of a medium.

**Date** Fri 25 Jul  
to Sun 27 Jul



**Tutor** Coral Grace

**Cost** Residential: £375  
Non-residential: £270  
(incl. materials)

**Course code** A2507CG

## APPRECIATING SHAKESPEARE IN PERFORMANCE: AS YOU LIKE IT

The perfect play for a summer weekend. Victims of sibling rivalry exiled to the forest unexpectedly find love and happiness after initial misunderstandings. The Festival Players' outdoor performance at Higham is followed by a Q&A with the director and cast. Lectures and discussions in the surrounding sessions add context and depth.



**Date** Fri 25 Jul  
to Sun 27 Jul



**Tutor** Clare Smout

**Cost** Residential: £375  
Non-residential: £270  
(includes ticket to performance)

**Course code** L2507CS

## SHAKESPEARE IN THE GARDEN: AS YOU LIKE IT

"All the world's a stage, and all the men and women merely players; they have their exits and their entrances, and one man in his time plays many parts" The Festival Players ([www.thefestivalplayers.co.uk](http://www.thefestivalplayers.co.uk)) return to Higham with the pastoral comedy *As You Like It*. Open 1.30pm for picnics. Bring your own seating. Well-behaved dogs welcome. This performance coincides with the APPRECIATING SHAKESPEARE IN PERFORMANCE course above, which includes a ticket to the performance.

**Date** Sat 26 Jul  
from 3-5pm



**Performers** The Festival  
Players

**Cost** Full price £20,  
concessions £15

**Course code** D2507FP

## JAZZ PLAYERS' SUMMER SCHOOL FEATURING ALAN BARNES (SAX)

A serious yet relaxed week for jazz musicians who are able to play and read music to rehearsal band standard. Play a range of material from Swing to Bebop in small groups under the expert guidance of three of the UK's best jazz musicians. All prospective players must contact David before enrolling to ascertain instrument(s) and level. Contact details available from office.

**Date** Sun 27 Jul to  
9am Sun 3 Aug



**Tutors** David Black with  
Alan Barnes and Mark  
Armstrong

**Cost** Residential: £825  
Non-residential: £570

**Course code** M2507DB



## JAZZ CONCERT

A lively and engaging evening of mainstream jazz with David Black and players from our residential jazz course joined by very special guests saxophonist Alan Barnes and trumpeter Mark Armstrong.

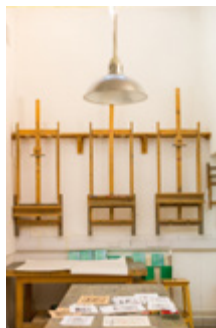
**Date** Sat 2 Aug  
8-11pm



**Performers** David Black,  
Alan Barnes and Mark  
Armstrong

**Cost** £15 Bar open

**Course code** D2508DB



## ARTIST LABORATORY

Over six days in the studio this mentored programme, centred on your own practice, will foster experimentation, enquiry, and artistic development. With Steve's knowledgeable and considered support, and utilising individual and group discussions, you will be encouraged to respond open-mindedly to your own questions and ideas around your medium/media, conceptual approaches, and subject matter.

**Date** Sun 3 Aug  
to 9am Sat 9 Aug



**Tutor** Steve Humble

**Cost** Residential: £800  
Non-residential: £470

**Course code** A2508SH

### BOTANICAL ART USING COLOURED PENCIL: CAPTURING THE GLORIOUS COLOURS OF SUMMER

Summer is a time of vibrant and exuberant colour in the gardens and countryside. Learn to imitate nature's rich and varied palette exploring colour mixing and matching using coloured pencils. Observing nature's details, you can produce a single study or create a composition of smaller subjects to record this colourful season. This course is suitable for beginners and those with some experience with coloured pencils.



**Date** Sun 3 Aug  
to Fri 8 Aug



**Tutor** Susan  
Christopher-Coulson

**Cost** Residential: £690  
Non-residential: £430

**Course code** A2508SCC

### SCOTTISH BORDERS HISTORY

Minibus fieldtrips exploring the rich and layered history of the English and Scottish borderlands. Visit historic sites in the Scottish Borders, Dumfries and Galloway and Cumbria. A journey through time – from the medieval period up to more recent cultural heritage including a few famous (and sometimes infamous) locals.

**Date** Mon 4 Aug  
to Thur 7 Aug



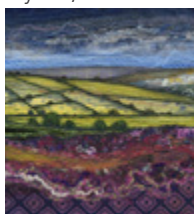
**Tutor** Fiona Stoddart

**Cost** Residential: £535  
Non-residential: £380  
(incl. fieldtrips)

**Course code** H2508FS

### HILLS AND MOORLAND LANDSCAPES IN RECYCLED FABRICS

For beginners and improvers. Create a fabric landscape based on hilly landscapes and moorlands using a wide range of recycled, found and repurposed materials. Explore a wide range of experimental textile and mixed media techniques including layering and blending of fabrics using a sewing machine. From inspiration to realisation, be supported and encouraged to play, taking a closer look at colour, pattern and perspective. You should be comfortable using a sewing machine for this course.



**Date** Fri 8 Aug  
to Sun 10 Aug



**Tutor** Justine Warner

**Cost** Residential: £350  
Non-residential: £245

**Course code** C2508JW



## FROM MINING TO MOUNTAINEERING: INDUSTRY AND CULTURE IN THE LAKE DISTRICT

This course explores the cultural and environmental history of the English Lake District, and investigates how perceptions of the region have influenced modern ideas and attitudes about the natural world. We'll begin by reading accounts by 17th century travellers to the Lake District (many of whom found the region terrifying) before considering the causes of a dramatic change in popular opinions about the Lakeland in the 18th and 19th centuries. We'll conclude by examining the dedication of the Lake District as a national park in the 20th century and by discussing debates that are currently shaping the region's future. Along the way we'll have the chance to delve into a range of important topics, such as the Lake District's place in the history of environmental activism; the region's connection with key cultural movements; the rise of mass tourism and commercial leisure culture; the development of landscape aesthetics. We shall also have a chance to evaluate the effect of the industrial revolution on the Lakes, and we shall explore the region's industrial heritage.



**Date** Fri 8 Aug  
to Sun 10 Aug



**Tutor** Dr Christopher Donaldson

**Cost** Residential: £360  
Non-residential: £255  
(incl. fieldtrip)

**Course code** H2508CD

## STILL LIFE PORTRAIT

Create an unconventional 'portrait' using objects or images which describe that person or place. A great way to convey the essence of someone while developing your imagination and skill in composition. For inspiration, we will look at work by artists who have used this unusual approach to portraiture. There will be a presentation and plenty of helpful reference materials, demonstrations and individual guidance from your tutor.



**Date** Fri 8 Aug  
to Sun 10 Aug



**Tutor** Ceri Allen

**Cost** Residential: £350  
Non-residential: £245

**Course code** A2508CA

## EARLY MUSIC SUMMER SCHOOL

For competent singers, viol and recorder players, covering music c1450-c1650. Instruction in choral/solo singing, viol and recorder playing, lute, plus vocal technique and various consorts. Plenary music-making sessions, lectures and opportunities to try something new (instrument or voice). A marvellously rich musical cocktail! There is an application form and you need to contact head tutor Deborah Catterall before booking so that she can ensure the correct balance of singers and instruments for this course. Contact details from office. For full details and application form see [www.highamhall.com/emss](http://www.highamhall.com/emss)

**Date** Sun 10 Aug  
to Sat 16 Aug



**Tutors** Deborah Catterall,  
Elizabeth Dodd, Philip  
Gruar, Richard MacKenzie,  
Michael Piraner

**Cost** Residential: £790  
Non-residential: £510

**Course code** M2508DC

## PRINTMAKING WORKSHOP



Explore a wide range of techniques to produce handmade prints to your own design: woodcut (cutting on plank wood); wood engraving (using end-grain substitute or similar); drypoint (drawing on plastic or metal sheet with a needle); and etching (using copper sulphate to etch zinc plates, hard and soft ground and aquatint). All abilities welcome. With demonstrations, extensive technical support and all materials provided (except items noted on course programme), this is a fantastic opportunity to expand your printmaking repertoire.

**Date** Sat 16 Aug  
to Wed 20 Aug



**Tutor** Peter Collins

**Cost** Residential: £600  
Non-residential: £395  
(incl. basic materials  
and equipment)

**Course code** C2508PC

## SKETCHBOOK: FAST AND LOOSE COLOUR

Relax and enjoy getting back to the basics with artful games to get creative inspiration flowing, all in the privacy of your own sketchbook! Explore new ways of seeing objects, recording your impressions and using your sketchbook so it becomes an essential resource to support your creative thinking.

**Date** Sat 16 Aug  
to Mon 18 Aug



**Tutor** Pam Grant

**Cost** Residential: £350  
Non-residential: £245

**Course code** A2508PG

## NURTURE THROUGH NATURE SUMMER YOGA RETREAT

This transformative summer yoga retreat is designed to rejuvenate the mind, body and spirit. Beginners and seasoned yogis will immerse themselves in the practice of Hatha yoga and mindfulness activities. Inner balance, peace and calm will be restored using the nurturing magic of nature. The day will be energised with an invigorating flow, and the evening will be to unwind with yoga Nidra and a variety of relaxation techniques. Guided meditations will cultivate mindfulness. Pranayama (breathing exercises) will enhance energy and focus. Topics will include Ayurvedic nutrition and lifestyles, balancing chakras and creating a sustainable self-care routine. There will be group activities to foster camaraderie and support, and opportunities for journaling to ignite a renewed sense of purpose and connection to self. This retreat promises a refreshing pause from daily life, allowing you to return home inspired and recharged.

**Date** Sat 16 Aug  
to Mon 18 Aug



**Tutor** Andrea Sanders-Fox

**Cost** Residential: £350  
Non-residential: £245

**Course code** F2508ASF

## MYTHICAL RINGS: THE STONE CIRCLES OF THE BRITISH ISLES

Stone circles have always stimulated the imagination and generated debate. This course will explore the long history of the study of these 'mythical rings', including attempts to understand how they were built and their original purpose, the folklore they have inspired, modern interpretations, and issues of presentation and management.

We will travel from Orkney to Dartmoor, and from Long Meg to The Merry Maidens. The course will include a visit to Castlerigg stone circle, near Keswick.



**Date** Mon 18 Aug  
to Thu 21 Aug



**Tutor** Dr. Kate Sharpe

**Cost** Residential: £495  
Non-residential: £340

**Course code** H2508KS

## CIRCLE DANCE RETREAT

An extended circle dance retreat. Newcomers as well as experienced are welcome to join this inclusive form of community dancing where no partners are required. Music and dances drawn from worldwide cultures and countries and pace varies from lively to meditative. A tonic for body and mind!

**Date** Mon 18 Aug  
to Fri 22 Aug



**Tutor** Anne-Lise Kryger

**Cost** Residential: £585  
Non-residential: £380

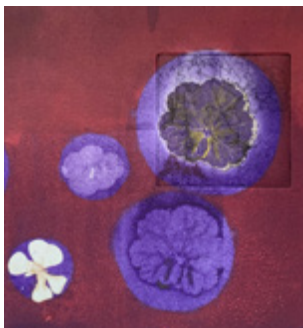
**Course code** M2508AK

## NATURE PRINTS

"When we observe nature, the guiding feature seems to be a kind of permission to exist, a capacity to co-exist amongst the countless forms of life" Gustav Metzger (1992)

Nature prints were for centuries used to reproduce plants and build up study collections of flora and fauna; during the 19th century they were the precursor to photography. A slow walk in Higham's garden gathering plant material will lead to the making of nature monoprints reflecting your own journey of discovery and exploration of nature. You will learn in playful ways to manipulate the surface of the natural things gathered to make several series of one-off nature prints. You will learn how to use a press printing directly and indirectly and how to work with the viscosity of printing inks.

The ghost images and traces left on your plate will be worked on to create intricate and subtle prints. Post-production enhancements with inks produced from plants in the garden and some of your own watercolours will bring the work alive.



**Date** Wed 20 Aug  
to Fri 22 Aug



**Tutor** Caroline Wendling

**Cost** Residential: £430  
Non-residential: £325  
(incl. paper and materials)

**Course code** A2508CW1



## STARTERS' MINI-ORCHESTRA FOR WOODWIND & STRINGS (C INSTRUMENTS)

Not played with others much? Instrument been languishing in its case? Lacking confidence? This easy beginners-level weekend is for you! Primarily designed for musicians between Grades 1-4. For instruments in the key of C (i.e. flute, oboe, bassoon and bowed strings - sorry, no clarinets or saxophones). With relatively straightforward instrumental parts in terms of key and note range, enjoy making music with others in our mini-orchestra.

**Date** Fri 22 Aug  
to Sun 24 Aug



**Tutor** Catriona  
Melville-Mason

**Cost** Residential: £350  
Non-residential: £245

**Course code** M2508MM

## PAINTING THE SEA

Cumbria's west coast has a wide variety of shoreline subjects for the painter, from dramatic cliffs to sandy/pebbly beaches and tidal estuaries. Join landscape painter Lionel Playford visiting two different locations for inspiration. Sharpen up your skills sketching and painting en plein air and learn some useful techniques to capture the look and feeling of place, then develop your sketches into a finished painting back in the studio.



**Date** Fri 22 Aug  
to Mon 25 Aug



**Tutor** Lionel Playford

**Cost** Residential: £515  
Non-residential: £360  
(incl. fieldtrips)

**Course code** A2508LP

## DRAWING FROM THE EARTH

"Nature, from the Latin nasci means to become, to come from, that is to say, all that by its own force develops, forms, moves." (Kurt Schwitters 1924).

Iron, sandstone and slate have been mined in Cumbria for centuries and are still used to make artist colours such as Egremont red, St Bees yellow and Kirkby grey. Cumbria, a place of beauty, has been home and inspiration to generations of artists such as Kurt Schwitters, Winifred Nicholson, Li Yuan-chia and many more.

This place and the artists who lived and worked here will be the starting point for our research, study and inspiration to produce drawings. You will spend two and a half days in the landscape, walking and responding to place. You will be encouraged to collect small samples of earth and stones to make your own pigments, textures or marks. Drawing exercises will focus on sensory experiences of place followed by studio time where you will be taught how to expand your experiences, drawings, research and notes into experiments, some using chance, and then into resolved pieces.

Bring your usual drawing materials, sketchbook and/or paper and suitable footwear and clothing for the weather. On our way to St Bees beach, we will stop at Florence Arts Centre to visit the mine and studio where they process locally-sourced pigments.

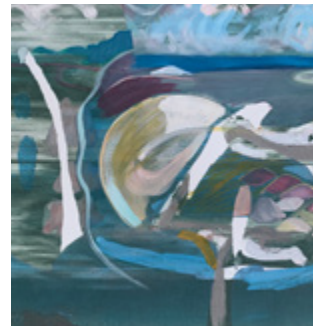
**Date** Fri 22 Aug  
to Mon 25 Aug



**Tutor** Caroline Wendling

**Cost** Residential: £510  
Non-residential: £355  
(incl. fieldtrip)

**Course code** A2508CW2







### CHAMBER MUSIC SUMMER SCHOOL

For pre-formed trios, quartets and quintets. Groups work together in the mornings at self-selected repertoire. Afternoons free to explore the beautiful surroundings. Remaining sessions for mixed ensembles. Large library of music to explore.

**Date** Mon 25 Aug  
to Fri 29 Aug



**Tutors** Louise Latham with  
Tamsin Symons, Stephen  
Threlfall and Mary Dainton

**Cost** Residential: £640  
Non-residential: £470

**Course code** M2508LL

### DRAWING AND PAINTING BUILDINGS

Have you ever wanted to draw or paint buildings but not sure how to start? Then this course is for you. Learn the tricks of the trade looking at perspective, how to accurately measure and transfer what you see and bring character to your drawings using watercolours. Step by step demonstrations throughout. This is your opportunity to improve your drawing skills and apply them in your paintings.

**Date** Fri 29 Aug  
to Mon 1 Sep



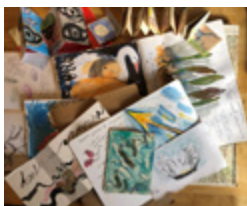
**Tutor** Jane Beech

**Cost** Residential: £485  
Non-residential: £330

**Course code** A2508JB

### EVERY PICTURE TELLS A STORY

This course is about exploring ideas and themes in visual form. We will take inspiration from personal and universal stories both big and small. We will work in a sketchbook format through short exercises and group activities. Rather than a focus on completed pieces, we will make explorative pieces - the course is aimed to enable you to come away with a wealth of rich threads to follow in your own time. Some confidence in sketching and image-making is desirable.



**Date** Fri 29 Aug  
to Sun 31 Aug



**Tutor** Colette Cameron

**Cost** Residential: £360  
Non-residential: £255

**Course code** A2508CC

### PRE-RAPHAELITISM: DREAMS OF AN EARTHY PARADISE

Following on from last year's course on the Pre-Raphaelite Brotherhood, we look at some of the later Pre-Raphaelite pictures which proved to be the perfect vehicle for the dreams and aspirations of Victorian society. This course will investigate attitudes to women, men and relationships through the key preoccupations which emerged in painting and literature of that time.



**Date** Fri 29 Aug  
to Sun 31 Aug



**Tutor** Tim Stimson

**Cost** Residential: £350  
Non-residential: £245

**Course code** A2508TS1

## RUSKIN LACE

Ruskin Lace is a distinctive form of lace which originated as a cottage industry in the Lake District in the 1880s. You will be working on linen fabric using a combination of drawn thread and cut linen work, with the geometric designs being created using needlelace techniques specific to this type of lace. The course is suitable for both beginners, who can purchase a starter pack from the tutor (cost £15), and for those with more experience.

**Date** Sun 31 Aug  
to Tue 2 Sep



**Tutor** Karen Quickfall

**Cost** Residential: £350  
Non-residential: £245

**Course code** C2508KQ

## NORWEGIAN ART: THE EMERGENCE OF THE MODERN

19th century Norway was culturally impoverished by 600 years of foreign control, but by the mid-1800s art was becoming a potent expression of national pride, culminating in the realism of Christian Krohg and the exuberant celebrations of Norwegian landscape of Harald Sohlberg and Nikolai Astrup.

**Date** Sun 31 Aug  
to Tue 2 Sep



**Tutor** Tim Stimson

**Cost** Residential: £350  
Non-residential: £245

**Course code** A2508TS2

## CREATIVE RELIEF WOODCARVING

Relief carving is the process of cutting a pattern or design into a flat surface. For those new to the craft, Sharon will gently guide you through the process of transforming a block of wood into a unique image in relief with generous one-to-one support, technical instruction and extensive knowledge of her subject. Bring your own visual sources or use Sharon's books for inspiration. Learn to transfer a pattern, use chisels safely and try a range of carving techniques. For beginners and experienced woodworkers. Those who have attended previous courses may bring projects of their own to work on.

**Date** Mon 1 Sep to  
Sun 7 Sep



**Tutor** Sharon Littlely

**Cost** Residential: £800  
Non-residential: £470

**Course code** C2509SL



## CHORAL MASTERPIECES

Following the inspiring example of Mozart's Requiem we will immerse ourselves in three requiems from the Romantic era. Brahms' German Requiem used a Lutheran text and includes the chorus "How lovely are thy dwellings fair". Verdi's Requiem is well-known for its dramatic "Dies Irae"; by contrast the opening is quietly pleading. Faure's Requiem has an altogether gentler approach, with its "Pie Jesu" and "In Paradiso" making the perfect ending.

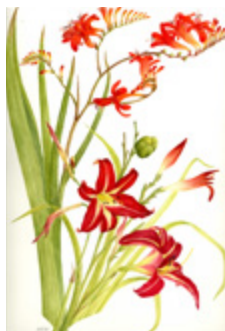
**Date** Tue 2 Sep  
to Thu 4 Sep



**Tutor** Ian France

**Cost** Residential: £350  
Non-residential: £245

**Course code** M25091F



## BOTANICAL WATERCOLOUR PAINTING

Sculptural seed heads and glowing hedgerow fruits will inspire you to capture the fresh palette and clean lines of autumn. Working direct from nature, learn to accurately depict them in watercolour with technical demonstrations, knowledgeable guidance and one-to-one tuition. For both beginners and the more experienced.

**Date** Tue 2 Sep  
to Fri 5 Sep



**Tutor** Marion Wilson SBA

**Cost** Residential: £485  
Non-residential: £330

**Course code** A2509MW

## CINEMA, ART AND HISTORY

This course will be a wide ranging look at the history of cinema in Britain and the USA with three evening screenings and individual sessions on great directors, different genres and the complexities of film-making.

**Date** Tue 2 Sep  
to Fri 5 Sep



**Tutor** Colin Shindler

**Cost** Residential: £485  
Non-residential: £330

**Course code** L2509CS1

## SING WITH OTHERS: YES, YOU CAN!

If you have little experience of singing with others, believe you can't sing or just feel a bit rusty, then this course will be a journey of discovery to find your voice and use it to join others singing beautiful music together. We take a holistic approach and have a lot of fun along the way. No music reading required but there will be a good deal of confidence building!



**Date** Fri 5 Sep  
to Sun 7 Sep



**Tutor** Deborah Catterall

**Cost** Residential: £350  
Non-residential: £245

**Course code** M2509DC

## WHITWORK EMBROIDERY

On this course you will be shown stitching techniques that are all grouped under the heading of Whitwork. As the name suggests they are all stitched on white fabric with white threads. We will focus on Schwalm and Mountmellik embroidery techniques. Some embroidery experience is recommended for this course.

**Date** Fri 5 Sep  
to Sun 7 Sep



**Tutor** Angie Burt

**Cost** Residential: £350  
Non-residential: £245

**Course code** C2509AB1



**Date** Sun 7 Sep  
to Wed 10 Sep

**Tutor** Angie Burt

**Cost** Residential: £485  
Non-residential: £330

**Course code** C2509AB2



## DRAMATIC SEASCAPES, SKIES AND LANDSCAPES IN SOFT PASTEL

Extend your artistic skills to create dramatic seascapes and skies using soft pastels. Demonstrations throughout, with constructive one-to-one critiques, support for beginners and encouragement for the more experienced to inspire you to make the most of this exciting and very versatile medium.

**Date** Sun 7 Sep  
to Thu 11 Sep



**Tutor** Eileen Gardner

**Cost** Residential: £585  
Non-residential: £380

**Course code** A2509EG

## LATE SUMMER YOGA AND WALKING

A perfect mix of hatha yoga sessions (working on postures, breathing exercises and relaxation) and guided hill walks of up to 5 miles, sometimes over rough and steep ground (requiring a reasonable level of fitness) among the peaceful northern fells - which will leave you feeling supple, relaxed and refreshed! Suitable for beginners and experienced.

**Date** Sun 7 Sep  
to Thu 11 Sep



**Tutors** Gill and Alan  
Hunter

**Cost** Residential: £635  
Non-residential: £430  
(incl. fieldtrips)

**Course code** F2509GH



### BEAD EMBROIDERY

Embroider a beautiful piece of work using beads stitched onto silk fabric. Taster kits available from £20 upwards.

**Date** Wed 10 Sep  
to Fri 12 Sep



**Tutor** Angie Burt

**Cost** Residential: £350  
Non-residential: £245

**Course code** C2509AB3

### EXPLORE COLOUR IN PAINTING - HOW TO UNDERSTAND IT AND HOW TO USE IT

Let Alex's knowledge of contemporary painting and colour theory guide you to develop your use and understanding of colour, how to use it to create harmony and balance or introduce drama or calmness where it's needed. With useful try-outs to practice, perfect to help you see and represent the world in a way that brings life to your paintings. Work in any media except oils. Not for beginners.

**Date** Thu 11 Sep  
to Sun 14 Sep



**Tutor** Alex Jakob-Whitworth

**Cost** Residential: £485  
Non-residential: £330

**Course code** A2509AJW



### VISITING LAKELAND GARDENS

Join expert horticulturalist Louise on an intimate tour of Lake District gardens, including some not normally open to the public. Meet the gardeners, discover new plants and garden design inspiration behind the gates, walls and clipped hedges of some hidden horticultural gems of the Lake District.

**Date** Fri 12 Sep  
to Mon 15 Sep



**Tutor** Louise Stoddart

**Cost** Residential: £525  
Non-residential: £370  
(incl. fieldtrips)

**Course code** N2509LS



## ANIMAL PORTRAITS IN PASTEL

For both beginners and improvers. Complete a tutor-led portrait of an alpaca on velour paper. Learn about various types of pastel and surfaces and practice layering, blending and building up texture. After this exercise, work on a picture of your own choosing with Paul's patient and generous one-to-one support. All materials provided but please bring your own photographs/reference material for the personal choice of subject (keep them clear and simple), a folder (A3 size or larger) for completed work and an apron or old shirt to protect your clothes.



**Date** Fri 12 Sep  
to Sun 14 Sep

**Tutor** Paul Holmes

**Cost** Residential: £365  
Non-residential: £260  
(incl. materials and box of pastels to keep)

**Course code** A2509PH

## FINDING MY VOICE: ASSERTIVENESS AND STANDING UP FOR MYSELF

This session will focus on understanding the meaning of assertiveness and developing skills to build self esteem and improve healthy relationships. A highly participative session where first-stage skills will be taught, facilitated and practised.



**Date** Sat 13 Sep  
10am - 4pm

**Tutor** Lina Mookerjee

**Cost** £95 incl. lunch and refreshments

**Course code** D2509LM

## ENAMELLING

Make enamelled jewellery, small tiles or panels working on copper, silver, or steel. Learn various techniques of enamel application as desired (foils, stencils and sgraffito among others) and practice kiln use, control and safety. All abilities welcome from beginners to advanced; students will be supported to work at their own pace on appropriate projects. Materials available to purchase from tutor (£5-£20 dependent upon project).



**Date** Sun 14 Sep  
to Thu 18 Sep

**Tutor** Tilly Wilkinson

**Cost** Residential: £595  
Non-residential: £390

**Course code** C2509TW

## BOTANICAL ART USING COLOURED PENCIL: DEPICTING THE FRUITS AND SEEDS OF HARVEST TIME

Mid-September is usually a great time to explore gardens and hedgerows to find interesting seeds and seed pods as well as colourful fruits before their colours and forms begin to fade with Autumn. Concentrate on one larger subject or perhaps select a collection of smaller subjects to observe and record in detail and capture in a coloured pencil study. This course is suitable for beginners and those with some experience with coloured pencils.



**Date** Sun 14 Sep  
to Wed 17 Sep

**Tutor** Susan Christopher-Coulson

**Cost** Residential: £485  
Non-residential: £330

**Course code** A2509SCC

## THE GOTHIC REVIVAL IN BRITAIN

Why does Higham Hall pretend to look like a medieval castle? This is one of the questions we will explore on this course devoted to one of the most influential movements in British architectural history. The course will include a visit to Wray Castle, a 19th century Gothic Revival house on the west shore of Lake Windermere.



**Date** Mon 15 Sep  
to Thu 18 Sep



**Tutor** Andrew Lacey

**Cost** Residential: £495  
Non-residential: £340  
(incl. fieldtrip)

**Course code** H2509AL

## PIANO WORKSHOP

A performance-based workshop where up to 10 players of Grade 7 standard and above prepare a short recital of between 15-20 minutes to play to the other participants. If possible, please bring along extra copies of the works being performed for the other players. John will give constructive suggestions for improving aspects of interpretation, technique, and performance. All is given in a friendly, supportive and non-competitive atmosphere with many opportunities for group discussion. There will be a joint recital on the final morning. Non-performing listeners are also welcome.

**Date** Sun 21 Sep  
to Tue 23 Sep



**Tutor** John Gough

**Cost** Residential: £365  
Non-residential: £260

**Course code** M2509JG

## DRAWING AND PAINTING LAKELAND CHURCHES

The northern Lake District contains many characterful old churches set in beautiful rural locations, some surrounded by mountains or hilly meadows and one or two with views across to the wide Solway estuary. Join Lionel on sketching and painting expeditions to seven different churches and churchyards to hone your skills in drawing both architectural and natural forms using line tone, colour and mark to capture their unique sense of place. There will be demonstrations throughout including line drawing, tonal studies and mixed media in colour. We will look to the work of great British artists such as JMW Turner, John Piper, Sheila Fell and Percy Kelly for inspiration and to consider their different approaches to expression.

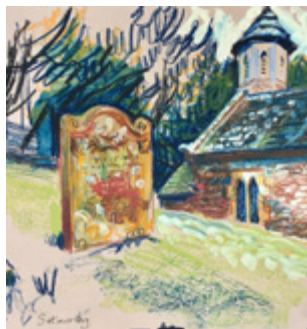
**Date** Sun 21 Sep  
to Thu 25 Sep



**Tutor** Lionel Playford

**Cost** Residential: £625  
Non-residential: £420  
(incl. field trips)

**Course code** A2509LP



## INTRODUCTION TO CREATIVE STITCHING

A fun way to get serious, stitching little creative projects using a stash of bits and pieces. Basic materials are provided, but feel free to bring some fabric of your own if you wish. Ann will guide you with professional tips to see what you can end up with. Relaxed and absorbing, this is a course to inspire your creativity and awaken your needle and/or sewing machine skills. For beginners and seasoned sewers.



**Date** Sun 21 Sep  
to Tue 23 Sep



**Tutor** Ann Gill

**Cost** Residential: £350  
Non-residential: £245  
(Materials available to purchase from tutor c.£10)

**Course code** C2509AG

## ITALIAN LANGUAGE AND CULTURE IMMERSION RETREAT

Do you love Italy? Are you looking to improve your Italian conversation and immerse yourself in Italian culture? Join Antonella in her retreat at Higham Hall. The retreat will balance structured group activities with plenty of free time to explore Italian film, literature and music. You will be encouraged and supported to build confidence and improve your Italian speaking skills through wide-ranging conversation and simple games. The retreat is designed to accommodate people who have a good understanding of written Italian but would like to develop their listening and conversational skills. If you are unsure if this event is appropriate for your level of competency with the language, please contact the tutor before booking. Contact details available from the office.

**Date** Tue 23 Sep  
to Thu 25 Sep



**Tutor** Antonella Rea

**Cost** Residential: £350  
Non-residential: £245

**Course code** L2509AR

## NATURE JOURNALLING FOR WELLBEING

Nature and journaling are both great for promoting wellbeing, so combine the two in the relaxing and nurturing environment of Higham. This supportive and non-judgmental course helps you to develop your own style of journaling, exploring different ways to combine words and art. There will be a focus on promoting good mental health, but also on having a rewarding time, and producing a journal to be proud of. Start recording your time with nature around 'attention, engagement and celebration' of the world around us. The skills that you will learn can be used to create meaningful journals on any theme. The tutor brings an extensive collection of inspiring books and resources to support your journey. Beginners and those who believe that they are 'no good' at art are very welcome. A blank journal is provided. Please bring your own watercolours, watercolour pencils, or coloured pencils.

**Date** Tue 23 Sep  
to Thu 25 Sep



**Tutor** Andrew Thurm

**Cost** Residential: £360  
Non-residential: £255  
(incl. journal to keep)

**Course code** A2509AT



## PAINTING TUMBLING WATER

Water cascading over rocks is always captivating, even thrilling to watch in nature. So it's little surprise that it's such a popular subject for painters. Jason has spent years studying this complex subject, finding the best ways to teach painters how to render moving water with greater ease and skill. Why not take the strain out of painting rivers and streams and grab this opportunity to take your water and rock painting skills to the next level.



**Date** Thu 25 Sep  
to Sun 28 Sep



**Tutor** Jason Skill

**Cost** Residential: £495  
Non-residential: £340

**Course code** A2509JS



## RECORDERS GRADES VI - VIII

For intermediate players (Grades 6-8). An opportunity to play together over a pleasant weekend with others, with expert guidance as appropriate.

**Date** Fri 26 Sep  
to Sun 28 Sep



**Tutor** Annemarie Klein

**Cost** Residential: £350  
Non-residential: £245

**Course code** M2509AK

## SUNDAY LECTURE COMMON GROUND – THE HISTORY OF COMMON LAND

Over a million hectares of Britain have the status of common land: 'half wild' land over which no single individual has exclusive use rights. This talk will take a long view on the subject, charting how the use of common land has changed since the Middle Ages; how it has been claimed as communal space for purposes as diverse as trade, sport and illegal gatherings, and how the meaning of common land has changed, resulting in the multiple (and sometimes competing) values attached to it today.

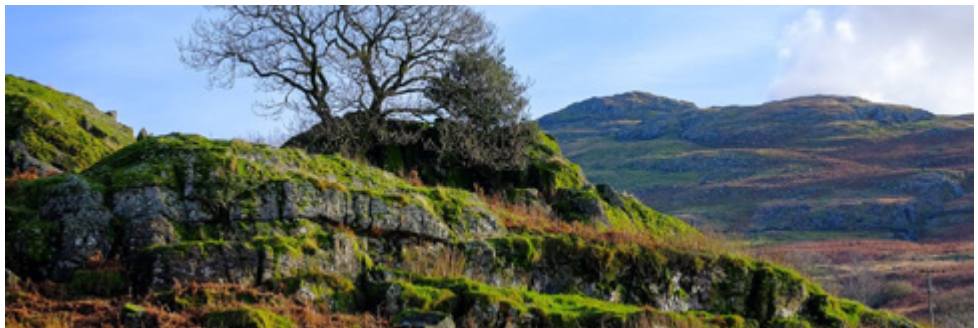
**Date** Sun 28 Sep  
2pm - 4pm



**Tutor** Prof Angus J L  
Winchester

**Cost** £10 incl.  
refreshments

**Course code** D2509AW



## ROMEO AND JULIET

became the world's most famous love story. Why did it become so enduringly popular? Join us to look more deeply at a familiar play and examine Shakespeare's use of source material, staging and, above all, poetry.



**Date** Sun 28 Sep to  
Tue 30 Sep



**Tutor** Clare Smout

**Cost** Residential: £350  
Non-residential: £245

**Course code** L2509CS2



## INTRODUCTION TO NATURAL DYEING

This course is suitable for beginners and those with some knowledge. We will use traditional plants to dye animal fibres. We will dye small hanks to produce a range of colours. From these, each student will have samples to mount on cards for future reference. A variety of techniques will be used.

**Date** Mon 29 Sep  
to Thu 2 Oct



**Tutor** Judy Hardman

**Cost** Residential: £495  
Non-residential: £340  
(incl. materials)

**Course code** C2509JH

## LAKES, RIVERS AND SPRING WOODLANDS - PAINTING NATURE WITH ACRYLICS

A step-by-step instructional course to guide you in producing two beautiful paintings of both lakes/ivers and spring woodlands using acrylic paints. Learn to employ a range of techniques to achieve realism, impressionism and coherent tonal qualities, pushing the boundaries of the acrylic medium. Please bring your own brushes and any other tools/implements you like to use.

**Date** Mon 29 Sep  
to Thu 2 Oct



**Tutor** Kara Strachan

**Cost** Residential: £485  
Non-residential: £330

**Course code** A2509KS

## GET WEAVING!

Explore the use of colour and texture. Dress a loom. Understand how to read pattern draft. Suitable for both absolute beginners and developing weavers.

**Date** Tue 30 Sep  
to Fri 3 Oct



**Tutor** Jan Beadle

**Cost** Residential: £485  
Non-residential: £330  
(yarns £15 available to  
purchase from tutor)

**Course code** C2509JB



# ADDITIONAL INFORMATION

## COURSE FEES

Non-residential course fees cover tuition, morning coffee/afternoon tea, lunch and dinner.

Residential fees cover tuition, accommodation and all meals and refreshments.

Materials: In addition to the course fees, there may be some additional itemised costs to cover materials provided as part of the course. These are often paid direct to the course tutor at the start of the course and are not included in the course fees unless otherwise stated. Full details in the course programme.

Field trips: Some courses involve field trips to locations around Cumbria and the Borders. Where this is the case, course fees include a small additional charge to cover associated costs.

Course programmes are available on request and are sent with your booking confirmation.

## OTHER EVENTS

The ticket price for lectures and performances include refreshments unless otherwise stated.

## BURSARIES AND ASSISTED PLACES SCHEME

If you are in receipt of individual State Benefits or aged 18-25, you can apply for either:

- an assisted place: up to 20% discount on course fees.
- a bursary: a one-off discretionary award up to the value of 70% of course fees.

Please complete an application form available from the office: 017687 76276  
admin@highamhall.com

Bursaries and the assisted place scheme are supported by Friends of Higham membership subscriptions. Awards are made at the discretion of Higham Hall College and subject to availability of funds.

## TO BOOK A PLACE

Please call the office on 017687 76276 to enquire about a course, book a place and discuss your accommodation requirements.

### 1-day (non-residential) workshops

Full fee payable on booking.

### Residential courses

A non-refundable deposit of £50 is required to reserve a place on a residential course. Payment of any outstanding course fees must be made no less than one month before the course start date.

### You can book/pay

- over the telephone using a credit or debit card
- by sending a cheque made out to 'Higham Hall College Limited' with a completed booking form (enc.)

Please note, your booking will not be confirmed until this payment has been processed.

## CANCELLATION POLICY

When paying the outstanding balance, you have the option to take out our cancellation cover at £5 per night. This guarantees an 80% refund of the course fee (less non-refundable deposit of £50) if you need to cancel your place within one month of the course start date because of illness, injury or death of self or close relative (a doctor's certificate or equivalent evidence may be required). Please note we are unable to issue any refund without this cover although your own travel insurance may cover you.

## COVID-19

There are no current COVID-19 restrictions in the UK. If you have COVID-19 you should try to stay at home. To help us protect other students who may be vulnerable, please call to inform us if you have a positive COVID-19 result in the week before your course.



## HOW TO GET HERE

Higham Hall is on the northern edge of the Lake District, between Cockermouth (3 miles) and Keswick (8 miles), near Bassenthwaite Lake.

Postcode: CA13 9SH

What3words: buzzards.practical.trickled

### By car

From the A66, take the B5291 signposted Dubwath/Castle Inn. Higham Hall is signposted after turn-off. Continue 500m to the junction, turn right, go 500m and turn left 500m up the hill.

From Carlisle (A595), turn left at Bothel (A591) and turn right onto B5291 at Castle Inn. After Ouse Bridge bear sharp right, take 2nd road on the right 500m up the hill.

## Public transport

Nearest railway stations: Penrith (25 miles), Carlisle (24 miles), Workington (10 miles) or Aspatria (8.4 miles).

From Penrith station, take the X4/X5 bus service towards Workington & get off at the Lakes Distillery or Embleton Wheatsheaf pub.

From Workington station, take the X4/X5 bus service towards Penrith & get off at the Lakes Distillery or Embleton Wheatsheaf pub.

From Carlisle station take the no.554 bus towards Keswick & get off at the Castle Inn Hotel.

Please let us know if you intend to travel by public transport. We can meet you at these bus stops if you arrive before 5pm.

Alternatively, pre-book taxis from the station to Higham for a fair fixed rate direct through Davies Taxis (Keswick): 017687 72676

# ADDITIONAL INFORMATION

## STAYING AT HIGHAM

We hope you will make yourself at home at Higham. Explore the garden or climb a fell; there is a drying room for damp clothes and boots. If not in use for a course, the Drawing Room is a cosy place to while away a quiet hour or two. Browse the bookshelves and baskets of donated books for reading material while you are here. The Bar is open nightly 6-10:45pm. We have umbrellas and hot water bottles and a small stock of travel essentials if you have forgotten anything. There is a member of staff on duty 24/7 so if you need help with anything, just ask.

## On the menu

We serve a hearty breakfast, 2-course lunch and 3-course dinner every day. Morning coffee and afternoon tea with homemade biscuits and cakes are also provided. All meals are prepared freshly in our kitchens from locally sourced ingredients so we are able accommodate any dietary or allergy requirements. Please tell us about any dietary needs on booking.

## Accommodation

Every room is different at Higham. We offer single, twin and double rooms. All have private bathrooms but not all are ensuite.

We charge an ensuite supplement of £10pppn. Double occupancy of twin rooms is discounted at a rate of £5pppn. Carers sharing a room will be charged for meals only. Bedroom accommodation in the main house is on the first floor, and we have a stairlift to help with access. There are also a number of ground floor rooms with level access in the Gatehouse and

Bungalow, which are a short distance from the main house. We offer one fully accessible (single) bedroom. Please get in touch to discuss any mobility issues so we can ensure you are offered appropriate accommodation.

We have set aside two ground floor rooms for guests who wish to bring their dogs. There is an additional charge of £30 per dog to cover housekeeping costs. Please check availability on booking.

There is plenty of free parking on site.

Hook-ups and a sluice room are available for students wishing to stay in campervans or motor homes. Please tell us in advance. A charge of £15 per vehicle per night will be due on booking.

Electric car charging is no longer possible on site. Please call for guidance on nearest charging points.

Space permitting, we also welcome guests who are not attending courses.

B&B standard room £60 (ensuite +£10pppn)

Breakfast £12, Lunch £16, Dinner £26

Please note we are obliged to add VAT to these prices for guests who are not attending courses.

Alternative B&B accommodation is available in the local area; please ask the office for recommendations.



## PLEASE SUPPORT US

Higham Hall College is an educational trust (charity no.1124959), one of an increasingly small number of independent residential colleges across the UK offering lifelong learning in the form of creative and lecture-based courses for adults.

We need to raise funds each year to help us operate, as income from course fees alone does not cover the costs of running our programmes and caring for this wonderful historic building and grounds. We also have ambitious plans for our future but we can't do it alone. We need the help of everyone who cares about the good we do to support us.



### Looking for gift ideas?

All your purchases help support Higham. We have a selection of tutors' prints, books and cards for sale. We also have jute bags capacious enough to carry all your crafting gear, reusable insulated stainless steel water bottles handy for field trips, and gorgeous new dishwasher-proof, bone china mugs designed by tutor Susan Christopher-Coulson.

Higham gift cards are also available and can be credited with any amount, valid for 2 years.



### Donate

Please consider making a donation online at <https://www.totalgiving.co.uk/charity/higham-hall-college> or via the new contactless donations point at reception. Please Gift Aid your donation if you can by completing the declaration on the enclosed booking form or following instructions online. Using Gift Aid means that we can claim an extra 25p from HMRC for every £1 you give.

### Become a Friend of Higham

Make a lasting impact with a regular monthly or annual donation that will help us sustain Higham all year round. We will be re-launching the Friends of Higham later this year and look forward to sharing our plans with you. Please let us know if you wish to be kept informed or visit [www.totalgiving.co.uk/mypage/friendsofhigham](http://www.totalgiving.co.uk/mypage/friendsofhigham)

### Volunteer

We are hugely grateful to our volunteers for the hard work they put in all year round to help us keep Higham running, from gardening or driving the minibus to making curtains. If you have a skill and can offer a few hours of your time either on a regular weekly basis or for a few concentrated days, please get in touch.



Higham Hall College  
is an educational trust  
supporting lifelong learning  
in the arts, natural history  
and humanities through  
workshops, lectures,  
residential courses and  
retreats in the English Lake  
District.

*for the creative and the curious...*



**HIGHAM  
HALL**

**Higham Hall  
Bassenthwaite Lake  
Cockermouth  
Cumbria  
CA13 9SH**

**017687 76276  
highamhall.com**

We are also a company limited by  
guarantee and registered in England.  
Company no. 06421365 Charity no.  
1124959 VAT no. 927 4556 96