



HIGHAM
HALL

STUDY
BREAKS
IN THE
LAKES

OCTOBER 2025-
MARCH 2026







Contact us

017687 76276
admin@highamhall.com

Follow us

 [@highamhall](https://www.instagram.com/highamhall)

 [Higham Hall](https://www.facebook.com/HighamHall)

www.highamhall.com

Image credits

Cover artwork:
Sally Alexandre

Map:
Custard Graphic Design

Other photography:
© Steve Razzetti/
Higham Hall College

Design and print

Reeds (Cumbria) Ltd

WELCOME



to our winter brochure – it's another packed programme with plenty to inspire and enthuse – including new courses with new tutors in calligraphy, chair-caning, indigo dyeing, fired enamel painting and electric guitar to name a few.

It's been a busy year so far, and I want to thank you all for your continued support. As I write, the soaring sounds of a string orchestra are drifting through the building. The first summer schools are in the offing, the gardens are buzzing with wildlife and the dining room is full of animated chatter. It is a wonderful feeling to be in the midst of all this, and to work alongside Higham's fantastic staff, tutors and volunteers who are so much a part of what makes Higham such a special place.

We are making progress with essential building maintenance too: over the last two years we have improved the WiFi and updated the electrics, weather-proofed windows and upgraded fire protection across the site. Much work is in progress in the garden; there has been a great show of yellow rattle from the green hay we spread on the front lawn last summer so that will hopefully allow other meadow flowers to establish well in future years. We are gradually clearing out invasive species and creating exciting new spaces for people and nature. If you go online you will see we have also been working on our website. Here you will find practical information and news about what's happening at Higham; you can search for courses by tutor or discipline more easily. Last year we introduced online booking for day courses and events via TryBooking.com; now you will also be able to do so via the event webpage. You won't be able to book residential courses online yet, but we hope to be able to support that option eventually.

In 2026 we will celebrate 50 years of adult education at Higham: 50 years of supporting individual and collective wellbeing through lifelong learning, creativity, nature and community in this beautiful setting. As a living institution the college has adapted and thrived over the last half-century and will continue to evolve to meet the challenges ahead. Fundraising efforts are underway to help us meet some of these challenges, and we have been delighted by the response to the relaunch of the Friends of Higham; we now have over 100 members. Please, if you can, support Higham in this way. Friends receive an advance copy of the brochure and your regular contribution helps to sustain Higham year-round. For more information go to www.highamhall.com/supportus.

I look forward to welcoming you back soon.

Dr Elizabeth Fisher, Principal



We serve over 27,000 meals a year in our dining room and our fabulous front of house staff keep it running like clockwork and are always ready with a smile. Below, left to right: Carol with a camera-shy Yvonne in the background; Hiko, Julie and Sharon ready to serve lunch.





COURSES

All courses take place in the main house or studio, a converted stable which is reached via an internal courtyard. All teaching spaces are on the ground floor and have level access.

All courses start with dinner at 6.30pm on the first day and end after lunch on the last day unless otherwise noted in the course programme.

Day courses, lectures and concerts are available to book online. If you have a smartphone or device, you can scan this QR code or visit the website: www.trybooking.com/uk/eventlist/highamhallcollege.



Some courses run every year and there is often great demand for places. If you wish your name to be added to our 'register an interest' list for a particular course you can do this up to 12 months in advance. Just call and speak to a member of the office team.

You can also always call to enquire about any course or event, to book a place and to discuss your accommodation requirements. Our office team – Chris, Joan, Helen, Ruth and Amy – are always happy to help. We do not have an answerphone service so please be patient if you can't get through at first.

Details correct at publication. Please note we reserve the right to make changes to the programme if necessary.

A large print version of this brochure is available to download from our website: www.highamhall.com

STAY UP TO DATE

Any alterations and late additions to the programme will be advertised in our eNewsletter.

Subscribe at www.highamhall.com



Course Categories



Music



Wellbeing



Literature and film



Textiles



Nature



History



Crafts



Philosophy



Visual Arts

'THE SPIRIT OF THE AGE' VICTORIANS AT HOME AND PLAY

In a series of talks looking at Victorian narrative art, the course explores social and cultural issues of life on the home-front during the Victorian era. These include attitudes to death; the Victorians at play and entertainment; children's picture books and nursery rhymes; gardening; sport; the reshaping and re-energising of the celebration of Christmas.



Date Wed 1 Oct
to Fri 3 Oct



Tutor Danny Wells

Cost Residential: £360
Non-residential: £225

Course code H2510DW



STRING ORCHESTRA

A course for pre-formed string chamber music groups, working at self-programmed repertoire. Mary Dainton will join the tutoring team.

Date Fri 3 Oct
to Sun 5 Oct



Tutor Louise Latham

Cost Residential: £325
Non-residential: £220

Course code M2510LL

UPHOLSTERY

Learn to strip a small item of furniture (e.g. a chair, stool, ottoman or headboard), tackle interior paddings and rebuild it using traditional or modern upholstery techniques as appropriate. You bring the item of furniture you want to restore and the fabric you would like to use; all the fillings, specialist tools, technical materials and expertise will be provided. In order to ensure your time is well spent, you must contact Cathy directly prior to your course to discuss your project needs. Contact details will be provided on booking.

Date Fri 3 Oct
to Sun 5 Oct



Tutor Cathy Newbery

Cost Residential: £360
Non-residential: £255

Course code C2510CN



ENAMEL BOWLS

This course will focus on making fired enamel copper bowls of different sizes. There will be a range of sizes available to work with, from small to very large bowls but those who have not made an enamel bowl before will be encouraged to start small. We will troubleshoot the challenges of working at scale and experiment with enamel colours and techniques used in firing larger items to achieve captivating effects. Students will be encouraged to develop their own decorative styles and techniques, supported by Sharon's wide-ranging specialist knowledge and expertise. Please note this course is NOT for beginner enamellers. All materials available to purchase at cost from the tutor.

Date Mon 6 Oct
to Fri 10 Oct



Tutor Sharon Ford

Cost Residential: £595
Non-residential: £390

Course code C2510SF

BRASS BAND WEEKEND

A serious yet relaxed weekend for brass band players to rehearse and perform popular and some perhaps lesser-known brass band repertoire. There will be both whole-band and sectional rehearsals. All prospective players must contact Martyn at martyngrisdale@gmail.com before enrolling to ascertain level, instrument(s) and suitability.



Date Fri 10 Oct
to Sun 12 Oct



Tutor Martyn Grisdale,
Owen Farr and Alan
Ferne

Cost Residential: £330
Non-residential: £220

Course code M2510MG

INTRODUCTION TO BRYOPHYTES (MOSES AND LIVERWORTS)

An introductory course in which we will look at identifying some of the most common bryophytes. We will look at the main features that help with identification, collect some species from the grounds and practise using a key. We will use hand lenses and microscopes to appreciate the details of these tiny plants and get a better look at their defining features.

Date Fri 10 Oct
10am to 5pm



Tutor Clare Shaw

Cost £130 including lunch

Course code D2510CS



EXPLORE DRAWING - FOR BEGINNERS

A gentle introduction to drawing, working at your own pace with artist and tutor Ceri Allen. Learn the basics of drawing materials, methods and techniques. The first of 3 day courses with Ceri exploring different aspects of drawing.



Date Sat 11 Oct
10am to 4pm



Tutor Ceri Allen

Cost £100 including lunch

Course code D2510CA

MUSHROOMS, TOADSTOOLS AND OTHER FUNGI

Our seasonal opportunity to develop fungi identification skills with a renowned expert. Minibus field trips: easy, but off-path walking. Collect and observe fungi in various habitats, examine finds, accurately identify with a range of keys for identification to both genus and species. For anyone interested in fungi, seasoned or unseasoned, with a wish to learn. For the gastronomers amongst us, edible finds may be sent to the kitchen: a tasting opportunity! Coincides with our PAINTING FUNGI course.

Date Sun 12 Oct
to Wed 15 Oct



Tutor Paul Nichol

Cost Residential: £525
Non-residential: £370
(incl. field trip)

Course code N2510PN



PAINTING FUNGI

A chance to try botanical painting alongside our annual MUSHROOMS, TOADSTOOLS AND OTHER FUNGI identification course which should mean a wide range of real examples and mycological expertise will be immediately to hand if you wish to deepen your knowledge of your subject. Work in watercolour, coloured pencil or try a mixture of both, with demonstrations and individual tuition throughout to bring the subject to life. Suitable for all abilities.

Date Mon 13 Oct
to Wed 15 Oct



Tutor Marion Wilson SBA

Cost Residential: £365
Non-residential: £260

Course code A2510MW

BOOKBINDING: GLAZIER CODEX BINDING MODEL

The original Glazier Codex binding dates from 400AD, and is associated with eleven known examples of religious parchment texts written in Greek and discovered, mostly intact, in Egypt. For this course we will be making an alternative version of this structure keeping the same spine features by using oak wood boards and goatskin leather. We will be sewing the paper sections in the Coptic chain-stitch method. We will also hand sew simple primary end bands and make a 'D' ring fore-edge clasp. We can then decorate the leather with blind tooling. This attractive looking binding with exposed wood boards is very satisfying to make, with very little paring so trust me you will love it as much as I do, I'm sure. All materials available to purchase at cost from the tutor.



Date Mon 13 Oct
to Thu 16 Oct



Tutor Doug Mitchell

Cost Residential: £495
Non-residential: £340

Course code C2510DM

LACE AS YOU LIKE IT

Have you ever wondered about how lace is made? Would you like to learn this fascinating craft? All abilities are welcome, from complete beginner through to advanced. Want to try a lace type that you have not made before? Most of the many different lace types can be accommodated in the class. If you have a pattern or project that has been giving you difficulties, bring it along for constructive advice and/or instruction. The classes are all run in a friendly, positive and supportive atmosphere. Lacemaking equipment may be borrowed by prior arrangement.

Date Wed 15 Oct
to Fri 17 Oct



Tutor Jan Gardiner

Cost Residential: £360
Non-residential: £255
(Basic materials available to purchase from tutor c.£5-£10)

Course code C2510JG1

JANE AUSTEN - 250TH ANNIVERSARY CELEBRATION OF ONE OF OUR GREATEST NOVELISTS

Back by popular demand. This year is the 250th anniversary of the birth of Jane Austen, perhaps the best and certainly the most loved of our English novelists. From her Hampshire cottage she wrote six novels of family and social life in her time, with such fidelity and human understanding that her work seems to touch upon profound truths of human nature and experience, but always with a kindness and good humour. This course will celebrate her genius with a close look at her novels, including everyone's favourite *Pride and Prejudice*, in the context of her life and times.

Date Wed 15 Oct
to Fri 17 Oct



Tutor Bill Jones

Cost Residential: £365
Non-residential: £260

Course code L2510BJ

INSIDE THE STRING QUARTET AFTERNOON WORKSHOP

An open workshop for string quartet enthusiasts exploring the processes and challenges of preparing the works to be performed in the evening concert. Dialogue with the quartet positively encouraged! In association with Lake District Music.

LAKE DISTRICT MUSIC CONCERT

Concert presented by cellist Stephen Threlfall with members of the Autumn String Quartet. In association with Lake District Music.

Haydn Op. 20 no 2

Janacek Quartet No 1 'Kreutzer Sonata'

Beethoven Op. 95



Date Thurs 16 Oct
2-5pm



Tutors Pam Redman,
Helen Tongue, Stephen
Threlfall and Fay Sweet

Cost £90 including
refreshments & entry
to concert/drink in bar
afterwards (dinner not
included)

Course code D2510ST

Date Thurs 16 Oct
8-9:30pm



Musicians Pam Redman,
Helen Tongue, Stephen
Threlfall and Fay Sweet

Cost £20 includes drink
in bar afterwards

Event code D2510LDM



IMAGINING INTERIORS: DRAWING OUT STORIES

Thinking about interior spaces requires a different approach to buildings or objects that we look at from the outside. We are inside interiors, the shifting moods they produce, and the ephemeral lives lived in them. In this course we shall be creating interior images together, studying the moods and drawing out the stories of the beautiful interiors of Higham Hall. This is a practical course but this is not an art class and you do not need to have any artistic talent to undertake it. Rather, it is a practical and experimental exploration of rooms, in images and in the imagination. This course will be of interest to those who design interiors, but at the same time it is intended to be of interest to all those who, like all of us, live in and make interiors too, at home, at work, and at play.

Date Fri 17 Oct
to Sun 19 Oct



Tutor Prof. Edward Hollis

Cost Residential: £370
Non-residential: £265

Course code H2510EH



PRINTMAKING WEEKEND

Transform your own designs into print, perhaps for a Christmas card (it's never too early to start!) using the fascinating media of woodcut and wood engraving. Working with plywood, MDF, end-grain hardwood or plastic blocks, a wide range of styles is possible, whatever your art background. Beginners or experienced, be inspired to start a home industry! All materials available to purchase at cost from the tutor.

Date Fri 17 Oct
to Sun 19 Oct



Tutor Peter Collins

Cost Residential: £360
Non-residential: £255

Course code C2510PC

LACE AS YOU LIKE IT

Have you ever wondered about how lace is made? Would you like to learn this fascinating craft? All abilities are welcome, from complete beginner through to advanced. Want to try a lace type that you have not made before? Most of the many different lace types can be accommodated in the class. If you have a pattern or project that has been giving you difficulties, bring it along for constructive advice and/or instruction. The classes are all run in a friendly, positive and supportive atmosphere. Lacemaking equipment may be borrowed by prior arrangement.

Date Fri 17 Oct
to Sun 19 Oct



Tutor Jan Gardiner

Cost Residential: £360
Non-residential: £255
(Basic materials available to purchase from tutor c.£5-£10)

Course code C2510JG2

UPHOLSTERY WORKSHOP

Learn to strip a small item of furniture (e.g. a drop in dining seat or dining chair, stool), tackle interior paddings and rebuild it using traditional or modern upholstery techniques as appropriate. You bring the item of furniture you want to restore and the fabric you would like to use; all the fillings, specialist tools, technical materials and expertise will be provided. In order to ensure your time is well spent, you must contact Cathy directly prior to your course to discuss your project needs. Contact details will be provided on booking.

Date Fri 17 Oct
10am to 4pm



Tutor Cathy Newbery

Cost £100 including lunch

Course code D2510CN

THE GENIUS OF EALING

'Ealing Comedy' sums up a special kind of mid-20th century British film: fine ensemble casts, gentle satire, set in the present day. But Ealing's output also includes musicals featuring George Formby and Gracie Fields; wartime dramas; adaptations of literary classics and even horror. Besides watching some great films, we will sample the full range of Ealing's output between the 1930s and 1950s.

Date Sun 19 Oct
to Tue 21 Oct



Tutor Stephen Longstaffe

Cost Residential: £360
Non-residential: £255

Course code L2510SL

PASTEL AND MIXED MEDIA

We will be using pastel, and pastel with watercolour to explore the versatility of pastel with other medias, using different papers.



Date Sun 19 Oct
to Tue 21 Oct



Tutor Sue Ford

Cost Residential: £360
Non-residential: £255

Course code A2510SF



CAPTURE SCOTTISH SCAPES: EXPLORE EXPRESSIVE MIXED MEDIA

Create expressive landscape paintings inspired by Scotland using reference photos provided by your tutor, who will encourage you to paint loosely, work in layers and explore colour through a combination of group activities and one-to-one tutoring. Mixed media, for all levels.



Date Tue 21 Oct
to 9am Sun 26 Oct



Tutor Marion Boddy-Evans

Cost Residential: £675
Non-residential: £390

Course code A2510MBE

EXPLORING SOLWAY HERITAGE ON FOOT AND BY MINIBUS

This course will explore some of the rich history and heritage of the Solway coasts of Cumbria in NW England and Dumfries & Galloway in SW Scotland. It will include coastal walks of up to 5 miles duration and some minibus travel on each full day fieldtrip. The walks will take in historic Solway sites and will be on low level footpaths and country lanes which will include some uneven surfaces and smaller hills. Take advantage of Fiona's extensive knowledge of this area, explore historic sites and meet local experts.

Date Tue 21 Oct
to Fri 24 Oct



Tutor Fiona Stoddart

Cost Residential: £545
Non-residential: £390
(incl. field trips)

Course code H2510FS

QUILTING: SEMINOLE SAMPLER

Seminole patchwork comes from the work of the Seminole Indians in America. Many of the designs have meanings for the tribe, as do the colours used. In this workshop, we will start with the easier designs and progress to the harder ones. Your choices of colour, the designs you choose and your layout will make your finished item unique to you. The designs can easily be reused in the future as borders. Not suitable for complete beginners. Students can also bring their own project if preferred, or can choose to do a project offered previously at Higham Hall by this tutor.



Date Mon 20 Oct
to Thu 23 Oct



Tutor Lis Binns

Cost Residential: £495
Non-residential: £340

Course code C2510LB1

Date Thu 23 Oct
to Sun 26 Oct

Tutor Lis Binns

Cost Residential: £495
Non-residential: £340

Course code C2510LB2

THE 20TH CENTURY ENGLISH MUSICAL RENAISSANCE

This weekend will open the lid on those English composers working between 1900 and 1950, whose achievements proved to be a 'golden age'. Elgar, Delius, Holst and Vaughan Williams may be the major figures, but many other notable names appeared alongside them – Finzi, Howells, Warlock, Bax, etc. We will explore orchestral works, choral music and songs, including many pastoral gems to accompany your Lake District stay!

Date Fri 24 Oct
to Sun 26 Oct



Tutor Chris Rodwell

Cost Residential: £360
Non-residential: £255

Course code M2510CR



LAKELAND BOOK OF THE YEAR WRITERS' MASTERCLASS

Join award-winning author Rachel Lynch for an intensive masterclass for aspiring crime fiction writers in the tranquil and inspiring setting of Higham Hall College. Rachel Lynch is an award-winning author of thrillers and crime fiction set in the Lake District. She grew up in Cumbria and taught history until 2016 when she became a full-time writer. Her books have sold in the millions globally.

Designed to provide valuable critical support to those who might be at the start of their writing journey or always wanted to becoming a published writer, this 1-day workshop is organised in conjunction with the Lake District Book of the Year Award

to help nurture creative talent in Cumbria. Drawing on Rachel's unique expertise, the day will involve short creative exercises with constructive feedback and group discussion, Q&A, and a session on the practical side of the publishing industry and making a career of writing.



Date Sat 25 Oct
9am to 5pm

Tutor Rachel Lynch

Cost £120 incl. lunch & refreshments

Course code D2510RL



DISCOVERING WATERCOLOURS (MATERIALS PROVIDED)

Have you ever wanted to paint with watercolours but don't know how? If so, this is the course for you. Come along and be guided to make the most of watercolours. Get used to colour mixing, composition and different ways of achieving effects in a simple way, with time to develop various techniques you can use to produce watercolour paintings with confidence. Aimed at beginners or those who just want to brush up their techniques.



Date Sun 26 Oct
to Tue 28 Oct

Tutor Jane Beech

Cost Residential: £380
Non-residential: £275
(incl. materials)

Course code A2510JB

SEASONS GREETINGS

Explore the four seasons in song! This will be a relaxed and cheering opportunity to brighten up winter or recall the lazy days of summer. From folk songs to pop classics, there will be gentle, thought-provoking and foot tapping - even some lesser-known Christmas songs and alternative versions of a Christmas carol. This three-night course will give us ample time to try different styles. All levels are welcome, and music will be tailored to suit the level of participants. Season's Greetings to you all!



Date Sun 26 Oct
to Wed 29 Oct

Tutor Chris Hale

Cost Residential: £495
Non-residential: £340

Course code M2510CH

WOODCARVING: CREATIVE RELIEF CARVING

Relief carving is the process of cutting a pattern or design into a flat surface. For those new to the craft, Sharon will gently guide you through the process of transforming a block of wood into a unique image in relief with generous one-to-one support, technical instruction and extensive knowledge of her subject. Bring your own visual sources or use Sharon's books for inspiration. Learn to transfer a pattern, use chisels safely and try a range of carving techniques. For beginners and experienced woodworkers. Those who have attended previous courses may bring projects of their own to work on.

Date Mon 27 Oct
to 9am Sun 2 Nov



Tutor Sharon Littlely

Cost Residential: £810
Non-residential: £480

Course code C2510SL

INTERMEDIATE AND ELEMENTARY WOODWIND DIRECTED BY LAURENCE PERKINS

All applications to be made initially through Laurence to ascertain ensemble line-up. www.laurenceperkins.com/wind-serenades

We can pick up at 5pm from Penrith Rail Station (+£40) by prior arrangement on paying balance.

Date Wed 29 Oct
to Sun 2 Nov



Tutor Laurence Perkins
with Mandy Burvill

Cost Residential: £709
Non-residential: £502

Course code M2510LP

FREE INFORMAL WOODWIND CONCERT



Date Sunday 2 Nov
11:15am



Cost FREE

Event code D2510LP

CONSTRUCTING AND DECONSTRUCTING LANDSCAPE - ACRYLIC, OIL PASTEL AND DRAWING MEDIA

Studio based painting course working towards abstract/semi-abstract landscapes using acrylic inks, acrylic paints, acrylic auxiliaries and mediums together with soft oil pastels and different drawing media (coloured pencils and graphite). Aimed at experienced and intermediate level artists who want to move beyond representation in their painting style. Sorry, the course is NOT suitable for beginners as techniques taught are likely to be too advanced.

Date Sun 2 Nov
to Fri 7 Nov



Tutor Robert Dutton

Cost Residential: £715
Non-residential: £455

Course code A2511RD

YOU THE JURY

Join crime writer Diane Janes for an immersive experience where, as a member of a 12-strong jury, you'll examine five separate real-life murder cases that occurred between 1900-1975, chosen by Diane for the insights they can give us on our judicial system and social history. After listening to the evidence and discussing it with your fellow jurors, you will pronounce your verdict. The cases will not be revealed in advance and just as in a real Jury Room, jurors will be requested to put aside any pre-conceived ideas they may have, if they do happen to have heard or read anything about any of these cases previously. No previous knowledge or experience required. Come equipped with a pen, a notebook and an open mind...



Date Mon 3 Nov
to Thu 6 Nov



Tutor Diane Janes

Cost Residential: £495
Non-residential: £340

Course code L2511DJ

A WEEKEND WITH THE HARP



For all ability levels except absolute beginners. Emphasis will be on having fun, but attention will be paid to technique, tone, accuracy and musicality. Written music supplied and specially written parts will cater for all levels. All styles - something for everyone!

Date Fri 7 Nov
to Sun 9 Nov



Tutor Heather Downie &
Sunita Staneslow

Cost Residential: £360
Non-residential: £255

Course code M2511HNW

WOVEN TAPESTRY: BEGINNERS

Whether you are a beginner or in need of a refresher, this workshop is designed to give you a solid technical grounding in tapestry weaving. With expert guidance from award-winning tapestry and constructed textiles artist Louise Martin, participants will learn essential weaving techniques from setting up a loom, weaving a design, to finishing your tapestry. All equipment provided.

Date Sun 9 Nov
to Tue 11 Nov



Tutor Louise Martin

Cost Residential: £365
Non-residential: £260

Course code C2511LM1

POLYMER CLAY

Polymer clay is a colourful medium normally associated with jewellery making, but it can do so much more! This course will encourage students to adapt and experiment with the medium to suit their own creative practices. We will explore techniques, design, colour and textures through 3D projects such as boxes, trays, collage and jewellery.

Date Sun 9 Nov
to Wed 12 Nov



Tutor Susan Treweek

Cost Residential: £510
Non-residential: £355
(incl. materials)

Course code C2511ST

LINO-CUT PRINTMAKING

Using traditional lino-cut printmaking techniques, print your own images to create individual and decorative cards or pictures with expert guidance from Clare Melinsky. Clare is a renowned illustrator whose distinctive designs feature on product packaging, book covers, magazines, cards and even postage stamps. All tools needed are provided as part of the course: we also provide heated work surfaces to soften the traditional linoleum block to make it much easier to cut and carve. The course will benefit both beginners and those with some experience. There is enough time to make several designs. Materials available to purchase from tutor at cost.

Date Sun 9 Nov
to Wed 12 Nov



Tutor Clare Melinsky

Cost Residential: £495
Non-residential: £340

Course code C2511CM

CALICO GARDENS EMBROIDERY

Hand stitches in neutral shades with subtle enhancements creating texture and 3D effects. Beginners and experienced embroiderers all welcome; start with a Calico Garden Sampler to frame or bring your own project to work on with Angie's expert support. Weekend course follows 14-16 Nov.

Date Tue 11 Nov
to Fri 14 Nov 2025



Tutor Angie Burt

Cost Residential: £495
Non-residential: £340

Course code C2511AB1



Date Fri 14 Nov
to Sun 16 Nov



Tutor Angie Burt

Cost Residential: £360
Non-residential: £255

Course code C2511AB2

TAPESTRY WEAVING: A FEAST OF WEFTS

From wiry shining hemp to wire of all colours; from a chalky soft spun cotton to gleaming silks, muscular linens or sumptuous wools; even torn newspaper, plastic bags or worn-out clothing; there are so many potential weft materials, each with a unique personality. We'll try weaving with various plant fibres, synthetics, animal hair and wool - spun tightly, softly or not at all - to see how each handles, how it is held by the warp, and how different woven surfaces can be produced. This is a course suitable for experienced weavers wishing to extend their usual practice and to manage wefts of all kinds, and for new weavers making their first discoveries.



Date Tue 11 Nov
to Thu 13 Nov

Tutor Louise Martin

Cost Residential: £365
Non-residential: £260

Course code C2511LM2



TAPESTRY WEAVING: CIRCLES

How to form circles within a tapestry? Make circular tapestries? Weave circles small and large, part or whole, sharp-edged or diffuse, translucent, raised or outlined. Weaving circles within the grid of warp and weft means making careful choices of warp sett, weft materials and how and when to turn. This is an in-depth look at how various tapestry techniques can be applied to making beautiful circles.

Date Thu 13 Nov
to Tue 18 Nov

Tutor Louise Martin

Cost Residential: £710
Non-residential: £450

Course code C2511LM3



BEZEL SET CABOCHON GEMSTONE IN SILVER CLAY

This course is for silver clay enthusiasts who are confident working at an intermediate level. Stone setting is a big subject with many options to showcase each gemstone. Tracey will inspire and support you to develop your own design, punctuating a piece with a focal bezel set, round cabochon gemstone. You will learn a new range of skills and techniques as you are guided through each step of the process. You will learn basic soldering and fusing techniques along with some creative silver clay embellishment options.

Date Thu 13 Nov
to Sun 16 Nov

Tutor Tracey Spurgin

Cost Residential: £495
Non-residential: £340
(materials at cost from the tutor)

Course code C2511TS



COLLAGRAPH PRINTMAKING

Ideal as an introduction to experimental collagraph printing, or as a refresher, this course covers basic collagraph plate making techniques such as masking, layering, impressing and cutting into the surface. Understand how to create texture, line and tones from very dark to very light in your plates using a combination of everyday materials like sticky tape and sand paper. Using linseed oil-based printmaking inks, ink up your collagraph plates with increased confidence, combine intaglio and relief techniques and embrace colour. Relaxed and experimental, there is no such thing as a mistake! Leave with a mini portfolio of prints.

Date Sun 16 Nov
to Wed 19 Nov



Tutor Emily Harvey

Cost Residential: £515
Non-residential: £360

Course code C2511EH



CHINESE BRUSH PAINTING: BIRDS

Birds are a lively element in Chinese paintings and thus a common feature along with flowers. A variety of birds will be covered, both large and small. We will paint in both freehand and meticulous, realistic styles. We will also look at composition as space is such an integral part in traditional layouts and we only need to paint the 'essence', rather than filling the paper with ink or colour. Suitable for all levels with support and encouragement tailored to each student, from beginners to advanced.

Date Mon 17 Nov
to Thu 20 Nov



Tutor Peta Allingham

Cost Residential: £515
Non-residential: £360
(incl. materials)

Course code A2511PA



BEETHOVEN: SYMPHONIES 5, 6 & 7

Many of Beethoven's most popular works come from his "middle period". Fate knocks at the door in the Fifth. Relaxation in the countryside flows through the Sixth and Apollonian splendour and rhythmic drive characterise the Seventh.

Date Wed 19 Nov
to Fri 21 Nov



Tutor Ian France

Cost Residential: £360
Non-residential: £255

Course code M2511IF



PRINTMAKING: ETCHING

Spend time exploring the inky and atmospheric world of etching. Using metal plates made of copper or zinc you will learn the fundamental elements of the process, with demonstrations and extensive technical support, culminating in your own set of limited-edition prints. With new tutor Jack of Market Place Print Studio, Cockermouth.

Date Wed 19 Nov
to Fri 21 Nov



Tutor Jack Fawdry Tatham

Cost Residential: £385
Non-residential: £280
(incl.materials)

Course code C2511JFT

BOTANICAL ART USING COLOURED PENCILS: INSPIRED BY SEASONAL FRUITS, VEGETABLES AND NUTS

Here is an opportunity to observe in detail some of the plant-based food staples that see us through the darker seasons of autumn and winter. Create a composition or single study at your own pace and in a relaxed atmosphere. Learn to recreate their colours, surface textures and patterns. In the lead up to Christmas there should be a good selection of subjects to choose from - alongside the late apple and pear varieties there will be colourful citrus, quinces and figs; exotic dragon fruits, lychees and physalis; plus a range of nuts, dates and winter squashes. Even brassicas and root vegetables such as the colourful heritage varieties of carrots or even the humble potato, if left to start chitting, can make fascinating subjects worth depicting! Bring your imagination and enthusiasm to create an interesting tableau. This course is suitable for beginners and those with more experience and there will be rotating individual tuition throughout.

Date Thu 20 Nov
to 9am Tue 25 Nov



Tutor Susan
Christopher-Coulson

Cost Residential: £675
Non-residential: £390

Course code A2511SCC





AUTUMN YOGA RETREAT: TOWARDS A PERSONAL PRACTICE

An opportunity to explore and deepen your understanding of an accessible and adaptable approach to yoga, in the spirit of Vini yoga as developed by the pioneering yoga teacher T.K.V. Desikachar. All levels welcome; instruction and support will be tailored to each individual's ability and needs.

Date Fri 21 Nov
to Sun 23 Nov



Tutor Amanda Oakes

Cost Residential: £360
Non-residential: £255

Course code F2511AO

TRADITIONAL STAINED GLASS

Design and make a traditional stained-glass panel using key skills that will enable you to construct more elaborate projects later. Learn about design principles before creating and preparing your pattern, decide which glass to use and how to cut it safely, become confident in the leading and soldering process then finally clean and polish your panel, ready to be displayed when you get home! No experience required - be guided in all aspects by local stained glass artist, Nikki Clark. Returning students are welcome to bring their own designs to work on with Nikki's support; please contact Nikki in advance to discuss ideas and options. Contact details available from the office.

Date Fri 21 Nov
to Tue 25 Nov



Tutor Nikki Clark

Cost Residential: £615
Non-residential: £410
(includes materials)

Course code C2511NC

CARTOONS FOR CHRISTMAS

This entertaining short break will teach you the basic skills and techniques needed to tackle cartoon figures and animals and offer several ingenious methods to cheat at drawing your own Christmas cards. From stick figures to snow-persons, you will find that everyone can produce their own cartoon card with the aid of a few simple tricks, a modicum of practice and the supportive company of fellow cartoonists! Join celebrated cartoonist and author Colin Shelbourn whose well-loved cartoons have appeared in The Times, Readers' Digest, Private Eye and the front page of the Westmorland Gazette for over 40 years, and enjoy the satisfaction of producing your own fun cards this Christmas.

Date Sun 23 Nov
to Tue 25 Nov



Tutor Colin Shelbourn

Cost Residential: £360
Non-residential: £255

Course code A2511CS



CEILIDH BAND FOLK ENSEMBLE FOR ALL

A ceilidh band course for all instruments. We will cover music from the British Isles, America, Canada and beyond. There will be time spent working in a large group, and opportunities to break out into smaller groups or work individually to develop your skills with Chris' expert support. Whilst the course is suitable for all abilities, some basic skills of playing and music reading are essential. Besides playing the music, we will explore the dances too and some students will get the opportunity to call some dances as the course progresses.

Date Mon 24 Nov
to Fri 28 Nov



Tutor Chris McShane

Cost Residential: £595
Non-residential: £390

Course code M2511CM

BOX MAKING

Box-making is a key element of a bookbinders skillset. Although the primary function of a box is protection, they are also considered to be decorative objects in their own right, suitable for housing not only books and documents, but also jewellery and other precious or fragile artefacts and objects. This course will examine, study and fabricate a range of attractive box structures. We will also consider the materials used in their construction and how they can be adapted and modified. The course will be hands-on, working with board, card, bookcloth and marbled/decorated fine papers. No previous experience necessary.

Date Tue 25 Nov
to Fri 28 Nov



Tutor Tom McEwan

Cost Residential: £510
Non-residential: £355

Course code C2511TM

BETWEEN ARTIST, LANDSCAPE AND STUDIO PRACTICE: A DIALOGUE

What is 'the landscape' and how do contemporary artists work with it? It might be said that we are shaped by our world (or our ideas of it) as much as we, as humans, shape it. This course, centred on your own studio practice, will consider what the landscape means to us as artists, and how we might respond to it as subject matter. Steve will employ a combination of group tutorials, exercises, examples of contemporary practitioners, and briefs designed to stimulate your thinking. You will be encouraged to develop and reflect upon your own approaches and concepts around 'the landscape' as a potential subject, and to extend your use and technical handling of your chosen medium/media.

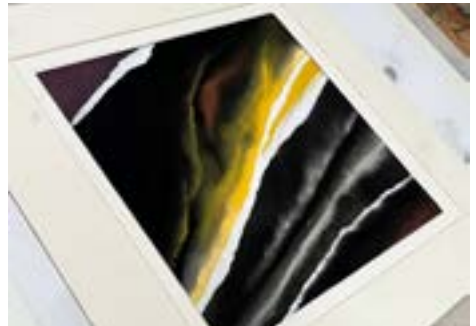
Date Fri 28 Nov
to 9am Wed 3 Dec



Tutor Steve Humble

Cost Residential: £675
Non-residential: £390

Course code A2511SH



TEXTS, TRADITIONS & TRANSLATIONS: THE CREATION OF THE BIBLE

As with all great literature, the story of how the Bible emerged is a fascinating one. Why were some books included and others failed to make the cut? Why do Catholics and Orthodox Christians have more books in their canon than Jews and Protestants? What happens when you translate a text out of its original language, and why do some translations like the Latin Vulgate and King James Bible carry such weight?

Finally, once a text has been written and translated it needs to be interpreted - and that too is a complex process. Join Michael Tunncliffe as he brings both literary and historical approaches to bear on one of the most significant texts in the history of civilisations.

Date Fri 28 Nov
to Sun 30 Nov



Tutor Michael Tunncliffe

Cost Residential: £360
Non-residential: £255

Course code H2511MT

USING LAYERS WITH FRANCES WINDER

Using layers of paint (acrylics, gouache, watercolour) we will work to develop free landscape or abstract paintings, based on building up textures with rag and cloth or gesso to add depth and interest.



Date Sun 30 Nov
to Tue 2 Dec



Tutor Frances Winder

Cost Residential: £360
Non-residential: £255

Course code A2511FW

WINTER BIRDS

Imagine spectacular gatherings of Barnacle and Pink-footed geese against a backdrop of a winter sunset and the massed pipings of thousands of waders as they swirl in the sky. Our Solway and Cumbrian coast is wintering ground for many species prior to their northward migration, hosting an exciting array of raptors. Hone your identification skills with experienced field ornithologist Keith Offord! The course will involve field trips by minibus during which there are stops for short walks (maximum daily amount c.4 km), on well-formed paths but with occasional gentle gradients and uneven sections.

Date Mon 1 Dec
to 9am Fri 5 Dec



Tutor Keith Offord

Cost Residential: £620
Non-residential: £390
(incl. field trips)

Course code N2512KO



TIME TO WRITE

A creative retreat in the idyllic surroundings of the Lake District which has been an inspiration to generations of writers. Whether you're a beginner needing help to put your ideas on paper, or an author longing for a peaceful space, constructive feedback and the company of other writers, this is for you. There will be workshops, discussions, time to write and explore the landscape, as well as one-to-one sessions, guided by an experienced, widely-published author and creative writing tutor.

Date Tue 2 Dec
to Fri 5 Dec



Tutor Kathleen Jones

Cost Residential: £495
Non-residential: £340

Course code L2512KJ

CHRISTMAS CREATIONS (MATERIALS PROVIDED)

Get into the Christmas Spirit! Arrangements will include a bauble wreath, an aromatic pot, a window ledge arrangement with glass candle holders, trees bows and baubles, a table centrepiece, a fresh winter landscape in a wooden trough, a sweet wreath and a Pot et Fleur. All materials will be supplied. Just bring strong scissors, wire cutters and secateurs (or borrow Karen's) and enjoy creating for Christmas. Always a real treat, fun and creative - we suggest you bring a decent box or crate to carry home your creations!



Date Wed 3 Dec
to Fri 5 Dec



Tutor Karen Neville

Cost Residential: £400
Non-residential: £295
(incl. materials)

Course code C2512KN



INSPIRED BY EXPRESSIONISM

Work on painting projects in the studio exploring the expressive potential of colour and abstraction, with inspiration from the joyous 'Blaue Reiter' expressionists. Notable figures associated with this group include Wassily Kandinsky, Franz Marc, Paul Klee and August Macke.

Date Wed 3 Dec
to Fri 5 Dec



Tutor Ceri Allen

Cost Residential: £360
Non-residential: £255

Course code A2512CA



UPHOLSTERY

Learn to strip a small item of furniture (e.g. a chair, stool, ottoman or headboard), tackle interior paddings and rebuild it using traditional or modern upholstery techniques as appropriate. You bring the item of furniture you want to restore and the fabric you would like to use; all the fillings, specialist tools, technical materials and expertise will be provided. In order to ensure your time is well spent, you must contact Cathy directly prior to your course to discuss your project needs. Contact details will be provided on booking.

Date Fri 5 Dec
to Sun 7 Dec



Tutor Cathy Newbery

Cost Residential: £360
Non-residential: £255

Course code C2512CN

THE ART OF PAINTING NOCTURNES

Take advantage of the early sunsets of mid-winter to sketch the nocturnal scene from dusk to starry night at Higham, contrasting natural and artificial light. Back in the studio we will develop these into painting studies that evoke a sense of nocturnal place and mood. We will look at great nocturnal painters like Whistler, Homer, Grimshaw, Munch and Hopper for inspiration; learning through copying their work to understand how they conveyed different moods through tone, colour, mark and composition. There will be demonstrations, group discussions and individual support throughout. This course is for students with moderate or substantial experience of painting who want to try something more challenging.

Date Sun 7 Dec
to Thu 11 Dec



Tutor Lionel Playford

Cost Residential: £635
Non-residential: £430
(incl. trips)

Course code A2512LP

POETRY AND TRANSLATION: DOORWAYS AND GATEWAYS; SPRINGBOARDS AND SOURCES

The translation of poems is probably as old as poetry itself, while poetry is regarded as the primal source of all literature. Translated poems are doorways into infinitely various habitations, or gateways into meadows both like and unlike our own. It is no wonder that so many poets have used translation as springboards for their own creativity, or as a way to exercise their writing muscles. Using literal and gloss translations of a range of poems from different source languages, this course will make the creative act of translating poetry available to all. Knowledge of a foreign language is not necessary, but do bring curiosity, playfulness and the spirit of experimentation.

Date Sun 7 Dec
to Tue 9 Dec



Tutor Antoinette Fawcett

Cost Residential: £365
Non-residential: £260

Course code L2512AF

PILATES AND CIRCLE DANCE

Pilates and circle dance complement each other beautifully. Body-control pilates is a safe, effective form of body conditioning that works by strengthening the core postural muscles, re-balancing the body and bringing it back to correct alignment, while circle dancing is an activity that draws from many countries and cultures, celebrates the seasons, is enjoyable, easy to learn and does not require a partner. Alternating sessions focused on each activity provide a well-balanced, relaxing but energising experience.

Date Mon 8 Dec
to Thu 11 Dec



Tutor Susie Gale and
Anne-Lise Kryger

Cost Residential: £555
Non-residential: £400

Course code F2512SG

SCULPTURAL NEEDLEFELT

Create a characterful sculpture, c.12-18 inches in size, using wool fibres based on a wire armature. There will be plenty of sources of inspiration and support to try one of a range of stylistic approaches, from art deco abstraction to stone-carved or caricature. Sympathetic, patient and knowledgeable guidance from an outstanding felt artist (<http://www.furzie.co.uk>). All welcome, no experience with textiles necessary.



Date Tue 9 Dec
to Fri 12 Dec



Tutor Michelle Hickman
aka Furzie

Cost Residential: £495
Non-residential: £340
(materials available
to purchase from tutor)

Course code C2512MH

INTRODUCTION TO HAND-BUILT POTTERY WITH SLIP DECORATED SLABS

Suitable for complete beginners, although some pottery experience will be advantageous to students. Mono-printing with coloured slip is a fun way to decorate a pot before you make it. The technique lends itself to the expressive decoration of boxes, vases, jugs or anything else you can build with slabs. The coloured slip is applied with a slip trailer onto paper and then transferred onto the flat clay slab using a rolling pin. When the clay is leather-hard you can build your slab pot with seamless edge to edge decoration. The pots are fired and glazed after the course by the tutor and can be sent on at cost, or collected from Higham when they are ready. All materials provided.

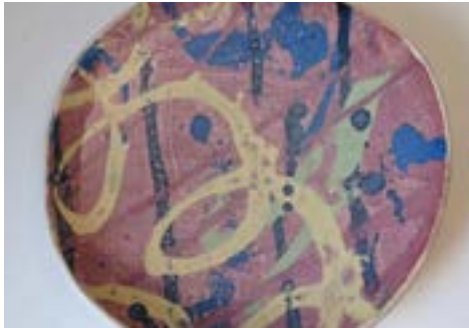
Date Fri 12 Dec
to Sun 14 Dec



Tutor Chris Barnes

Cost Residential: £410
Non-residential: £305

Course code C2512CB



FESTIVE FOLK SINGING WITH ROSIE AND WILL

Join Rosie and Will for some seasonal folk singing with this gentle introduction to folk music, singing in three- and four-part harmony! Can't read music? No problem - folk is an oral tradition, and we teach everything by ear. You will learn harmonies by ear with no music reading required; we will teach you how to warm up your voice then sing in rounds and in parts as you become acquainted with a wonderful folk repertoire in the company of two warm and talented tutors providing plenty of support and guidance. Suitable for all, even non-musicians. Rosie and Will have been professional performers for over 13 years; they bring a wealth of experience and their distinctive sound to Higham for the festive season.

Date Fri 12 Dec
to Sun 14 Dec



Tutor Will Finn and
Rosie Calvert

Cost Residential: £410
Non-residential: £305

Course code M2512RC

UPHOLSTERY WORKSHOP

Learn to strip a small item of furniture (e.g. a drop in dining seat or dining chair, stool), tackle interior paddings and rebuild it using traditional or modern upholstery techniques as appropriate. You bring the item of furniture you want to restore and the fabric you would like to use; all the fillings, specialist tools, technical materials and expertise will be provided. In order to ensure your time is well spent, you must contact Cathy directly prior to your course to discuss your project needs. Contact details will be provided on booking.

Date Fri 12 Dec
10am to 4pm



Tutor Cathy Newbery

Cost £100 including lunch

Course code D2512CN

WRITING THE LIVES OF SAINTS: THE GOLDEN LEGEND AND ITS COUNTERPARTS

In Anglo-Saxon and medieval England, hagiography - the writing of the lives of saints - became a literary genre par excellence that emerged from a confluence of oral traditions, cultural practices and religious pilgrimage throughout Europe. Notable examples of this phenomenon include Mirk's Festial, Aelfric's Lives of Saints and The Golden Legend, a collection of 153 hagiographies that at the height of its popularity in the Middle Ages was more widely published than the Bible, and translated from Latin into almost every other European language. During this course we shall explore the incredible journey of the spoken word through manuscript to printed text.

Date Sun 14 Dec
to Tue 16 Dec



Tutor Dr. Sandra M Elliott

Cost Residential: £360
Non-residential: £255

Course code H2512SE

RUSKIN LACE

Ruskin Lace is a special form of lace which originated as a cottage industry in the Lake District in the 1880s. Karen, a leading expert and author on Ruskin Lace, brings extensive knowledge to support and guide you whether it is your first encounter with this heritage craft or you are already addicted! You will work on linen fabric using a combination of drawn thread and cut linen work, with the distinctive geometric designs created using needlelace techniques specific to this type of lace. This course is suitable for both beginner and experienced needleworkers. If required, a starter pack (£15) is available to purchase from the tutor.

Date Fri 12 Dec
to Sun 14 Dec



Tutor Karen Quickfall

Cost Residential: £360
Non-residential: £255

Course code C2512KQ1



Date Sun 14 Dec
to Tue 16 Dec



Tutor Karen Quickfall

Cost Residential: £360
Non-residential: £255

Course code C2512KQ2

THE STORY OF THE ENGLISH LANGUAGE

English is the richest language in the world, but where do our words come from? We have borrowed many foreign words – where from and why? Words are very important to us, but why do they cause such strong reactions? Why are some words forbidden? Why are some words more 'respectable' than others? Why do we have regional dialects? Drawing on numerous examples, we will look at the origins and history of our native language.

Date Sun 14 Dec
to Tue 16 Dec



Tutor Bill Jones

Cost Residential: £360
Non-residential: £255

Course code L2512BJ

HAND-WOVEN CHAIR CANING

This course is suitable for beginners and those with some experience. You will learn how to re-cover your bedroom or dining chair using the traditional 6-way pattern. All materials will be provided and specialist tools will be available to borrow; comprehensive notes will supplement Brian's expert guidance. Brian is a second-generation chair caner with 40 years of experience; in 2020 he was awarded an MBE for services to chair caning and heritage crafts. It is essential that you send us, in advance, a picture of your chair by email so that Brian can contact you directly to discuss any preparation required to commence caning immediately.

Date Sun 14 Dec
to Wed 17 Dec



Tutor Brian Crossley MBE

Cost Residential: £505
Non-residential: £350
(incl. materials)

Course code C2512BC



MURDER MYSTERY FUNDRAISER: A CHRISTMAS KILLING

Christmas Day 1843. When world renowned businessman Sir Alan Scrooge is found dead in his parlour on a snow-covered christmas morn, you'd think there'd be no shortage of suspects who'd want to see the miserable miser murdered. But why are there only one set of tracks in the snow outside? How was Scrooge killed through an impenetrable locked door? And why has Spiritualist Charlie Dickens been seen snooping around the premises? Can Scrooge really have been killed by a ghost of Christmas past...?

"Prepare to have your funny bones and little grey cells equally tickled!" - Broadway World

Join acclaimed mystery maestros Highly Suspect for dinner, bed and breakfast with a difference. There's a fiendish plot, evidence to examine, and cryptic clues to crack. Can you catch the killer? With multiple sell out runs at the Edinburgh Fringe Festival and performances at venues including Durham Cathedral and Blackpool Winter Gardens, Highly Suspect are one of the country's leading murder mystery troupes. Fun, frivolity and fatalities guaranteed!

Date Wed 17 Dec
to 9am Thu 18 Dec



Cost £150

Event code D2512MM



CHRISTMAS LUNCHES AT HIGHAM

Join us for a festive 3-course Christmas lunch in the historic dining room at Higham. Enjoy a pre-lunch sherry in the Drawing Room and homemade chocolate truffles with coffee afterwards. Bring a group or just yourself; the halls will be decked, the fires lit and staff ready with our customary warm welcome. Traditional or vegetarian options available.

Date Thu 18 Dec
and Fri 19 Dec
at 12:30pm



Cost £30

Event code D2512CL



PORTRAITURE (CLOTHED LIVE MODELS)

Drawing from life is one of the essential skillsets for artists. During this course we will focus on the clothed model and work from live sitters. You will be guided to experiment towards a freer, yet meaningful drawing style. You will expand, refine and challenge your drawing practice whilst reinforcing all the essential fundamentals with in a small and supportive group.



Date Mon 5 Jan
to Thu 8 Jan



Tutor Catherine
MacDiarmid

Cost Residential: £515
Non-residential: £360

Course code A2601CM

SILVER JEWELLERY

This course is aimed at beginners and intermediate students. Students should have reasonable manual dexterity, as they will be learning how to use hand tools such as hammers, saws and soldering torches. Anyone who has attended the course before will have the opportunity to improve and expand their silverworking skills. Students will work on three projects (using both silver sheet and wire) - a bracelet, a pendant and some earrings. There is a materials fee of £52 which is payable in cash to the tutor on day one; it includes all silver plus silver solder, copper wire, a small piece of copper sheet for practicing and three sawblades.

Date Mon 5 Jan
to Thu 8 Jan



Tutor Rebecca Halstead

Cost Residential: £495
Non-residential: £340

Course code C2601RH

EXPLORE EMBROIDERY

All embroiderers welcome, from complete beginner through to advanced. Want to improve your skills or try something you haven't tackled before? Most techniques can be covered by our experienced tutor Angie. If you have a project that has been giving you difficulties, bring it along for constructive advice and/or instruction. The classes are all run in a friendly, positive and supportive atmosphere. Embroidery kits may be purchased from the tutor.



Date Mon 5 Jan
to Thu 8 Jan

Tutor Angie Burt

Cost Residential: £495
Non-residential: £340

Course code C2601AB1

Date Thu 8 Jan
to Sun 11 Jan

Tutor Angie Burt

Cost Residential: £495
Non-residential: £340

Course code C2601AB2

DEPICTING INTERIORS

A practical painting course exploring the genre of interior painting. The domestic interior has long been a rich source of material for artists. It is possible to evoke emotions, convey social commentary and even explore psychological themes through the formal choices made when portraying interior spaces and the objects inside. Join Ceri working in the atmospheric interiors of Higham Hall itself - with inspiration from great 'interior' painters such as Bonnard, Vuillard, Hammershoi and many others.



Date Thu 8 Jan
to Sun 11 Jan

Tutor Ceri Allen

Cost Residential: £495
Non-residential: £340

Course code A2601CA

SERGEANT PEPPER RE-IMAGINED

We will listen to tracks from the iconic Beatles Album then rewrite and rearrange them, creating our own new versions which we will then perform and record. The course is suitable for all acoustic instruments and musicians that can play to a reasonable standard. Please let us know in advance what instrument you play so that we can create the correct parts for you to play.



Date Fri 9 Jan
to Tue 13 Jan

Tutor Chris McShane

Cost Residential: £595
Non-residential: £390

Course code M2601CM

INTRODUCTION TO BRYOPHYTES (MOSSES AND LIVERWORTS)

An introductory course in which we will look at identifying some of the most common bryophytes. We will look at the main features that help with identification, collect some species from the grounds and practise using a key. We will use hand lenses and microscopes to appreciate the details of these tiny plants and get a better look at their defining features.



Date Fri 9 Jan
10am to 5pm

Tutor Clare Shaw

Cost £130 including lunch

Course code D2601CS

ENGLISH ROUNDWORK BASKETS

An old favourite! Work with Cumbrian basketmaker Phil Bradley to learn the techniques of English roundwork basketry. We will cover some of the basic elements of working with willow and take a fieldtrip to look at the growing, harvesting and managing of willow beds in Phil's own smallholding.



Date Sun 11 Jan
to Wed 14 Jan

Tutor Phil Bradley

Cost Residential: £520
Non-residential: £365
(includes materials and fieldtrip)

Course code C2601PB

PAINTING TEXTURE AND DETAIL WITH WATERCOLOUR: STEP BY STEP

Painting texture and detail can be both fun and absorbing. It also does not have to take an age working with a small brush. There are lots of fun ways you can 'shortcut' the appearance of texture using some quick painting approaches used by the professionals. Your tutor Jason will take you step-by-step through projects that will yield great results and inspire you to embrace and enjoy depicting texture in your paintings. Subjects will include pebbles, old distressed wood, rusty metal and peeling paint.



Date Sun 11 Jan
to Wed 14 Jan

Tutor Jason Skill

Cost Residential: £495
Non-residential: £340

Course code A2601JS

YOGA AND CIRCLE DANCE

Yoga and circle dance complement each other beautifully. Daily yoga practice involving postures, breathing techniques and relaxation will alternate with sessions of circle dancing, a gentle, enjoyable and easy-to-learn activity which is drawn from many countries and cultures, celebrates the seasons, and does not require a partner.



Date Tue 13 Jan
to Fri 16 Jan

Tutor Gill Hunter and
Anne-Lise Kryger

Cost Residential: £555
Non-residential: £400

Course code F2601GH

NORTH OF EVERYWHERE: POETRY AND PAINT

Helen Mort's journeying poem, 'North of Everywhere', will be our creative map for this course. Using writing and painting techniques we'll explore ideas about the north and nordic imagination - rich terrain that has unsettled and provoked writers and artists across time and geography. Uncanny, outlandish, inventive - join us for the mystery and magic of time spent under northern skies.



Date Wed 14 Jan
to Fri 16 Jan

Tutor Alison Critchlow
and Susan Allen

Cost Residential: £460
Non-residential: £355
(incl. materials)

Course code A2601SA

RUSKIN LACE

Ruskin Lace is a special form of lace which originated as a cottage industry in the Lake District in the 1880s. Karen, a leading expert and author on Ruskin Lace, brings extensive knowledge to support and guide you whether it is your first encounter with this heritage craft or you are already addicted! You will work on linen fabric using a combination of drawn thread and cut linen work, with the distinctive geometric designs created using needlelace techniques specific to this type of lace. This course is suitable for both beginner and experienced needleworkers. If required, a starter pack (£15) is available to purchase from the tutor.



Date Fri 16 Jan
to Sun 18 Jan

Tutor Karen Quickfall

Cost Residential: £360
Non-residential: £255

Course code C2601KQ

RECORDER ENSEMBLE - INTERMEDIATE

An opportunity to make music together over a pleasant weekend, with expert guidance. Repertoire from the Renaissance to the present. For intermediate players who play at least two sizes of recorders.

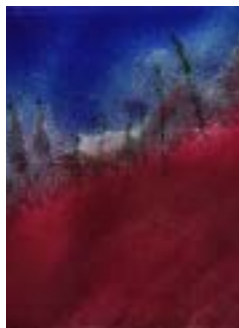


Date Fri 16 Jan
to Sun 18 Jan

Tutor Annemarie Klein

Cost Residential: £360
Non-residential: £255

Course code M2601AK



ENAMELLING WEEKEND

Work on copper, silver or steel; make enamelled jewellery, small tiles or panels. Absolute beginners welcome. You will learn key skills such as enamel application; kiln use, control and safety; foils, stencils, sgraffito and other techniques as desired. Materials available to purchase from Tilly (£5-£20 dependent upon project).

Date Fri 16 Jan
to Sun 18 Jan



Tutor Tilly Wilkinson

Cost Residential: £370
Non-residential: £265

Course code C2601TW1

ENAMELLING WEEK

Four full days for time-consuming techniques (painted enamels, advanced cloisonne, plique a jour).

Work on copper, silver, or pre-prepared steel; making enamel jewellery, small panels, bowls, or kiln-fired beads. Some experimental techniques may be tried; such as raku firing, solar Riso screens and marbled enamels. Beginners or more experienced. Materials available to purchase from Tilly (£5-£30 dependent upon project).



Date Sun 18 Jan
to Fri 23 Jan



Tutor Tilly Wilkinson

Cost Residential: £720
Non-residential: £460

Course code C2601TW2

BOTANICAL ART USING COLOURED PENCILS: THE FIRST FLOWERS AND EVERGREENS OF THE WINTER GARDEN

Despite the frosty temperatures, colour is beginning to return to the garden with flowering shrubs like winter jasmine or mahonia sparkling against the deep greens of laurel, ivy, variegated hollies or box, and hardy flowers such as hellebores, cyclamen and snowdrops appear in the borders and woodland edges while on windowledges forced bulbs will be bursting into life. Bring your own selection of flowering plants and evergreens to create an interesting botanical study. Work at your own pace in a relaxed atmosphere taking inspiration from this first flush of colour.

The course features rotating individual tuition throughout and is suitable for beginners as well as those with more experience. You may wish to plant some suitable bulbs in autumn in preparation for this course, although there should also be some available in shops or garden centres in January.

Date Sun 18 Jan
to Fri 23 Jan



Tutor Susan
Christopher-Coulson

Cost Residential: £700
Non-residential: £440

Course code A2601SCC



WINTER BIRDS

Imagine spectacular gatherings of Barnacle and Pink-footed geese against a backdrop of a winter sunset and the massed pipings of thousands of waders as they swirl in the sky. Our Solway and Cumbrian coast is wintering ground for many species prior to their northward migration, hosting an exciting array of raptors. Hone your identification skills with experienced field ornithologist Keith Offord! The course will involve field trips by minibus during which there are stops for short walks (maximum daily amount c.4 km), on well-formed paths but with occasional gentle gradients and uneven sections.

Date Mon 19 Jan
to 9am Fri 23 Jan



Tutor Keith Offord

Cost Residential: £620
Non-residential: £390
(incl. field trips)

Course code N2601KO

UPHOLSTERY

Learn to strip a small item of furniture (e.g. a chair, stool, ottoman or headboard), tackle interior paddings and rebuild it using traditional or modern upholstery techniques as appropriate. You bring the item of furniture you want to restore and the fabric you would like to use; all the fillings, specialist tools, technical materials and expertise will be provided. In order to ensure your time is well spent, you must contact Cathy directly prior to your course to discuss your project needs. Contact details will be provided on booking.

Date Fri 23 Jan
to Sun 25 Jan



Tutor Cathy Newbery

Cost Residential: £360
Non-residential: £255

Course code C2601CN

BOTANICAL WATERCOLOURS FROM WINTER INTO SPRING

From architectural seed heads, twigs and berries to the vibrant colour of emerging spring flowers from bulbs and shrubs, and of course Florists cut flowers will give us plenty of scope to paint a wonderful Botanical portrait in watercolour to brighten up the January days. Tuition for beginners and the more experienced students will be given.

Date Fri 23 Jan
to Mon 26 Jan



Tutor Marion Wilson

Cost Residential: £500
Non-residential: £345

Course code A2601MW

HIGHAM HALL CHOIR - BEGINNERS

If you have had little or no singing experience, or feel that you would like to find your confidence in a friendly, no-pressure environment, then this course is for you. The songs are chosen to help confidence grow and there are lots of tips on how to make a healthy, relaxed sound. We'll have fun and make sure that everyone is comfortable. There is no need to be able to read music.

Date Fri 23 Jan
to Sun 25 Jan



Tutor Deborah Catterall

Cost Residential: £360
Non-residential: £255

Course code M2601DC

ALAN BARNES JAZZ MASTERCLASS

Develop your jazz playing with the legendary saxophonist/clarinettist Alan Barnes. A prolific recording artist, international performer, composer, arranger and educator, Alan has received over 35 British Jazz awards and twice been made the BBC Jazz artist of the Year. We will take a relaxed look at jazz theory for instrumentalists with lots of opportunities to play and practise together. You will need to be able to read music, understand chords and preferably have some rehearsal band experience. (limited spaces)



Date Sun 25 Jan
to Thu 29 Jan



Tutor Alan Barnes

Cost Residential: £560
Non-residential: £350

Course code M2601AB

INTRODUCTION TO MEDIEVAL MANUSCRIPT ILLUMINATION

Use skills passed down by medieval craftspeople to create small designs using 23 carat gold and pigments. No drawing experience is necessary. A selection of medieval and contemporary designs are available to trace, including illuminated letters, but creativity is welcomed. Materials provided.



Date Sun 25 Jan
to Tue 27 Jan



Tutor Toni Watts

Cost Residential: £380
Non-residential: £275
(incl. materials)

Course code A2601TW1

FURTHER MEDIEVAL MANUSCRIPT ILLUMINATION

This is an intermediate-level course. Make perfect manuscript gesso using a traditional recipe, lay it smoothly and gild with loose leaf gold. This class is full of practical tips, helping you to achieve raised areas of gilding with a mirror shine. Those who are already able to make and lay gesso are welcome to work on their own projects with help and advice from the tutor. All tools and materials provided.

Date Tue 27 Jan
to Thu 29 Jan



Tutor Toni Watts

Cost Residential: £380
Non-residential: £275
(incl. materials)

Course code A2601TW2

BRIGHT COLOURS IN A DARK MONTH

Back by popular demand, this short painting course with Robert will focus on getting to grips with Derwent's InkTense blocks on Canson cotton rich watercolour paper (all materials provided). This highly versatile new painting medium allows for bold mark-making, glazing and layering - perfect for achieving expressive, semi-abstract compositions. We will take a creative approach to landscape subjects of your own choice - not necessarily Lake District views - so bring your own photographs, sketches and so on to work from. Not suitable for beginners.

Date Thu 29 Jan
to Sun 1 Feb



Tutor Robert Dutton

Cost Residential: £515
Non-residential: £360

Course code A2601RD



PILATES AND NORDIC WALKING

The combination of pilates and Nordic walking is perfect for building core strength & fitness. We will start the morning with a pilates class and spend the afternoon discovering the technique & benefits of Nordic walking. Having mastered the correct technique, participants will find that over 85% of body weight is supported so the exercise is excellent for anyone with knee and hip problems. There will be an opportunity to practice Nordic walking each day. Great for all ages. Poles provided.

Date Thu 29 Jan
to Sun 1 Feb



Tutor Susie Gale

Cost Residential: £515
Non-residential: £360

Course code F2601SG

BEGINNERS DRESSMAKING

For anyone with little or no knowledge of dressmaking or for those with little confidence, this is an opportunity to make an item of clothing of your own choice, using your own fabric, with generous encouragement and support from our experienced tutor. Lis will show you how to cut out, how to interpret the instructions, and what the instructions don't tell you. You will also learn how to insert a zip, make a buttonhole and how to finish a hem.

Date Fri 30 Jan
to Mon 2 Feb



Tutor Lis Binns

Cost Residential: £495
Non-residential: £340

Course code C2601LB



GET WEAVING!

Explore the use of colour and texture. Dress a loom. Understand how to read pattern draft. Suitable for both absolute beginners and developing weavers.

Date Sun 1 Feb
to Wed 4 Feb



Tutor Jan Beadle

Cost Residential: £495
Non-residential: £340
(yarns £15 available to purchase from tutor)

Course code C2602JB

PRINTMAKING WORKSHOP

Explore a wide range of techniques: woodcut (cutting in plankwood); engraving (on endgrain hardwood or plastic); drypoint (drawing on metal with steel); and etching (using acid to etch on a zinc plate). Make handmade prints to your own design. Beginners or experienced.



Date Mon 2 Feb
to Fri 6 Feb



Tutor Peter Collins

Cost Residential: £610
Non-residential: £405

Course code C2602PC

UPHOLSTERY WORKSHOP

Learn to strip a small item of furniture (e.g. a drop in dining seat or dining chair, stool), tackle interior paddings and rebuild it using traditional or modern upholstery techniques as appropriate. You bring the item of furniture you want to restore and the fabric you would like to use; all the fillings, specialist tools, technical materials and expertise will be provided. In order to ensure your time is well spent, you must contact Cathy directly prior to your course to discuss your project needs. Contact details will be provided on booking.

Date Mon 2 Feb
10am to 4pm



Tutor Cathy Newbery

Cost £100 including lunch

Course code D2602CN

CHINESE BRUSH PAINTING FOR THE TERRIFIED

Try your hand at this ancient artform. Once you have mastered how to hold the brush, you will be encouraged to experiment with varying degrees of pressure, speed and moisture. Soon enough these experiments will become relaxing, free-flowing brushstrokes. You will be surprised at how quickly a good painting can be formed. Traditional and modern topics covered. Lots of support for absolute beginners and interesting projects for the more experienced. Materials will be provided.

Date Tue 3 Feb
to Fri 6 Feb



Tutor Peta Allingham

Cost Residential: £515
Non-residential: £360
(incl. materials)

Course code A2602PA

ITALIAN LANGUAGE AND CULTURE RETREAT

Are you looking to improve your Italian and immerse yourself in Italian culture? Join Antonella on her third immersive retreat at Higham. The games, readings and videos used in each retreat all relate to a different cultural theme, which helps to support rich, sustained conversations in Italian amongst participants. The retreat is designed to accommodate people who have a good understanding of written Italian but would like to develop their listening and conversational skills. There will be a good balance between structured and free time.

Date Wed 4 Feb
to Fri 6 Feb



Tutor Antonella Rea

Cost Residential: £360
Non-residential: £255

Course code L2602AR

BRASS BAND WEEKEND

A serious yet relaxed weekend for brass band players to rehearse and perform popular, and perhaps lesser-known, brass band repertoire. There will be both whole-band and sectional rehearsals. All prospective players must contact Martyn at martyngrisdale@gmail.com before enrolling to ascertain level, instrument(s) and suitability.

Date Fri 6 Feb
to Sun 8 Feb



Tutor Martyn Grisdale,
Jamie Fisher and Paul
Fisher

Cost Residential: £330
and Non-residential £220

Course code M2602MG



THE MARK YOU MAKE

An exploratory drawing course looking at aspects of mark-making and materials.

Date Sat 7 Feb
10am to 4pm



Tutor Ceri Allen

Cost £100 including lunch

Course code D2602CA

PALETTE KNIFE EXPERIMENTS

Learn to use the palette knife as part of your painting repertoire. Have fun applying paint without a brush! Using drag, scrape and spread techniques. Explore the sculptural qualities of paint playing with textures and layers and mixing colours directly on the surface of the canvas. This humble artist's tool can unlock many new possibilities for abstract and chance effects. All materials provided.



Date Sun 8 Feb
to Tue 10 Feb



Tutor Coral Grace

Cost Residential: £380
Non-residential: £275
(incl. materials)

Course code A2602CG

MOTIFS, MONUMENTS AND MOUNTAINS: PREHISTORIC CARVINGS IN THE CUMBRIAN LANDSCAPE

The varied landscapes of Cumbria are dotted with a variety of enigmatic symbols, carved into rock surfaces over 5000 years ago. They range from complex designs on stone circles and burial cairns in the Eden Valley to simple scatters of hollows on striking outcrops in the central Lake District. Each carefully-made mark is a direct link with the prehistoric person who chose their canvas and imagined and applied a particular arrangement of motifs. What can these intriguing sites tell us about the people who made them, and what mattered to them?

Date Sun 8 Feb
to Tue 10 Feb



Tutor Dr. Kate Sharpe

Cost Residential: £360
Non-residential: £255

Course code H2602KS

AN EVENING IN PARIS

French music, for advanced players only. All applications to be made initially through Laurence to ascertain ensemble line-up via laurenceperkins.com/wind-serenades

CONCERT: AN EVENING IN PARIS

A varied programme of music performed by Laurence Perkins and friends. Doors open 7:45pm; bar open.

Ticket price includes a glass of wine in the bar afterwards.
Proceeds towards the Higham building appeal.

Date Sun 8 Feb
to Fri 13 Feb



Tutor Laurence Perkins

Cost Residential: £600
Non-residential: £460

Course code M2602LP



Date Thu 12 Feb
8-9pm



Tutor Laurence Perkins

Cost £20 or £35 for 2

Course code D2602LP

COLOUR ANALYSIS

A dip into the process of colour analysis, introducing colour theories, qualities and some of the history behind the development of colour analysis systems. There will be some group exercises where colours are compared to help you start to determine which colour families and qualities suit you best and understand how colour personalities can influence your wardrobe choices.

Date Sun 8 Feb
10am to 5pm



Tutor Coral Grace

Cost £100 including lunch

Course code D2602CG

CREATING COLLAGRAPH PLATE WITH TILE CEMENT

Tile cement is a wonderful, versatile material for making collagraph plates. We will be using it in its wet form to draw, scrape and impress marks and patterns into it. Once dry we will continue to work into it by sanding, scratching and smoothing areas. Everyone will create several hard-wearing textured collagraph plates from tile cement, and then make a series of unique and colourful prints using an etching press. Suitable for beginners and those with some printmaking experience.

Date Tue 10 Feb
to Fri 13 Feb



Tutor Emily Harvey

Cost Residential: £510
Non-residential: £355

Course code C2602EH

WINTER LANDSCAPE: SKETCHING AND PAINTING

Suitable for intermediate to advanced-level painters. Explore the Lake District in winter when colour and shadow are at their most varied and dramatic. With demos, exercises and expert advice throughout, experience outdoor sketching trips (dress for the weather!). Work with one or more media and develop a studio project in the painting medium of your choice.

Date Tue 10 Feb
to Sun 15 Feb



Tutor Lionel Playford

Cost Residential: £750
Non-residential: £490

Course code A2602LP



RUSKIN LACE

Ruskin Lace is a special form of lace which originated as a cottage industry in the Lake District in the 1880s. Karen, a leading expert and author on Ruskin Lace, brings extensive knowledge to support and guide you whether it is your first encounter with this heritage craft or you are already addicted! You will work on linen fabric using a combination of drawn thread and cut linen work, with the distinctive geometric designs created using needlelace techniques specific to this type of lace. This course is suitable for both beginner and experienced needleworkers. If required, a starter pack (£15) is available to purchase from the tutor.

Date Fri 13 Feb
to Sun 15 Feb



Tutor Karen Quickfall

Cost Residential: £360
Non-residential: £255

Course code C2602KQ



NURTURE THROUGH NATURE WINTER YOGA RETREAT

Embrace the stillness of the season with a soul-soothing yoga retreat nestled in the heart of nature's winter wonderland. This retreat is designed to help you reconnect with yourself and the natural world, offering deep rest, reflection and renewal.

Date Fri 13 Feb
to Sun 15 Feb



Tutor Andrea Sanders-Fox

Cost Residential: £360
Non-residential: £255

Course code F2602ASF

STRING CHAMBER MUSIC WORKSHOP

A course for pre-formed string chamber music groups, working at self-programmed repertoire. Fay Sweet, Stephen Orton and Mary Dainton will join the tutoring team.



Date Sun 15 Feb
to Tue 17 Feb



Tutor Louise Latham

Cost Residential: £370
Non-residential: £265

Course code M2602LL

DISCOVERING PEN AND INK

Create textures, tonal areas and decorative patterns in pen and ink, then combine them to create a finished drawing. With demos throughout and access to a variety of pens to experiment with, by the end you should be able to handle your materials with confidence.

Date Tue 17 Feb
to Thu 19 Feb



Tutor Jane Beech

Cost Residential: £360
Non-residential: £255

Course code A2602JB1

PEN AND WASH

A course looking at pen and ink techniques and combining them with watercolour to create line and wash artwork. We will be looking at how to create textures, tones and decorative patterns with ink and how to paint various washes and then combining the two to produce line and wash work. Demonstrations, help and advice will be given throughout the course, and you should be able to handle your materials with confidence by the end of the session. A chance to explore both watercolours and ink work. Suitable for beginners and those with some experience.

Date Fri 20 Feb
to Sun 22 Feb



Tutor Jane Beech

Cost Residential: £360
Non-residential: £255

Course code A2602JB2

LACE AS YOU LIKE IT

Have you ever wondered about how lace is made? Would you like to learn this fascinating craft? All abilities are welcome, from complete beginner through to advanced. Want to try a lace type that you have not made before? Most of the many different lace types can be accommodated in the class. If you have a pattern or project that has been giving you difficulties, bring it along for constructive advice and/or instruction. The classes are all run in a friendly, positive and supportive atmosphere. Lacemaking equipment may be borrowed by prior arrangement.



Date Wed 18 Feb
to Fri 20 Feb



Tutor Jan Gardiner

Cost Residential: £360
Non-residential: £255

Course code C2602JG1

Date Fri 20 Feb
to Sun 22 Feb



Tutor Jan Gardiner

Cost Residential: £360
Non-residential: £255

Course code C2602JG2

WINTER YOGA RETREAT: TOWARDS A PERSONAL PRACTICE

Alongside the practical practices and breathwork, this course provides the opportunity to explore the benefits of this accessible approach to yoga, adapted to the individuals ability and need. All levels welcome.

Date Fri 20 Feb
to Sun 22 Feb



Tutor Amanda Oakes

Cost Residential: £360
Non-residential: £255

Course code F2602AO

LOST CUMBRIA ON FILM

Join us as we embark on a time-travelling adventure with producers from Cumbria Film Archive. Their rare films, going back well over a century, mean you will enjoy a feast of nostalgia. For over thirty years they have been amassing a huge collection of material which will enthral anyone with an interest in local history. This will be a visual treat. Former BBC and ITV television producer Andrew Leitch will introduce each of the films and explain how this unique archive was compiled over the years.

Date Fri 20 Feb
11am to 4pm



Tutor Andrew Leitch

Cost £32 or £60 for 2. Incl.
lunch and refreshments

Course code D2602AL

LOOKING AT SMALL THINGS: LICHENS AT HIGHAM

Take a stroll around Higham's grounds with Cumbria Lichen and Bryophyte Group member Pete Martin for an enjoyable introduction to lichens. These overlooked yet remarkable features of the natural world can be found, quite literally, on our doorstep - or any other surface and in any environment. Pete will highlight some of the species to be found at Higham, explaining the fascinating nature of what lichens are and what they do. As you walk around, he will explain key features that help with identification, discuss some of the environmental conditions that affect them and introduce the stories they can tell us about pollution and the history of environmental management. Warm up with a hot drink and cake afterwards.

Date Sun 22 Feb
2-4pm



Tutor Pete Martin

Cost £18 each or £32 for 2. Incl. refreshments

Course code D2602PM

**MAHLER: SYMPHONIES 2, 3 & 4**

These "Wunderhorn" symphonies contain song settings from Mahler's favourite collection of poems: "the Youth's Magic Horn". Mahler incorporates them in his overall symphonic vision: Resurrection (no.2), the World (no.3) and Heaven (no.4).

Date Sun 22 Feb
to Tue 24 Feb



Tutor Ian France

Cost Residential: £360
Non-residential: £255

Course code M2602IF

INDIGO DYEING

Dyeing with natural indigo is a kind of alchemy. During this fascinating course, you will learn about working with indigo dye using two different reducing agents. Molly will also show you a variety of shibori techniques which are used to pattern fabric, and explain how to get deep shades of blue. You will learn how to 'read' the dye vat, identify some of the key things that affect it and understand how to make adjustments to the vat when needed. You will leave the course with fabric dyed by yourself and a deeper understanding of this ancient plant-derived colourant. Molly is a textile artist who has been making clothes with the environment in mind for over 40 years.

Date Sun 22 Feb
to Tue 24 Feb



Tutor Molly Brown

Cost Residential: £360
Non-residential: £255

Course code C2602MB

CELTIC CALLIGRAPHY

This practical introduction to the art of calligraphy will focus on the calligraphic styles used by scribes from the 8th century to produce, for example, the Lindisfarne Gospels, the Book of Kells and Lichfield Gospels. These magnificent books were created by isolated religious communities where, although influenced by various overseas cultures, their individual styles flourished. We will start with some close looking and discussion of the work then use these historical references to write the calligraphic uncial and half-uncial hands. We will learn from the artistic techniques used to create the intricate Celtic knotwork and decoration, and combine with our calligraphy to produce a final piece of work to admire. New tutor Christine is an experienced professional calligrapher of international standing who has taught calligraphy for many years.

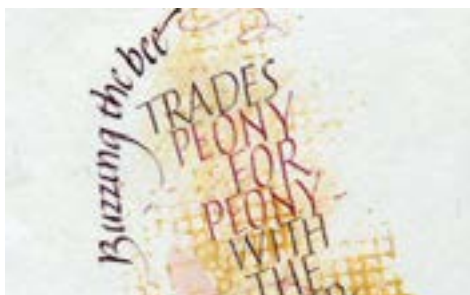
Date Sun 22 Feb
to Tue 24 Feb



Tutor Christine Oxley

Cost Residential: £365
Non-residential: £260

Course code C2602CO



GEOLOGY OF ENGLAND

The geological history of England spans almost 700 million years of time, which is reflected in its great diversity of rocks and spectacular landscapes. Come on an exciting journey that will encounter cataclysmic volcanoes, extinction events, oceans and mountain ranges, now all lost to time. This is an entirely indoor course delivered through a series of illustrated talks. A large selection of geological specimens from across England, as well as thin sections, relevant maps and books, will also be to hand for inspection.

Date Tue 24 Feb
to Fri 27 Feb



Tutor Annette McGrath

Cost Residential: £505
Non-residential: £350

Course code N2602AM

DRAMATIC SEASCAPES, SKIES AND LANDSCAPES IN SOFT PASTEL

Extend your artistic skills to create dramatic seascapes and skies using soft pastels. Demonstrations throughout, support for beginners and encouragement for the more experienced. Supportive one-to-one critique encouraging you to use this exciting and very versatile medium.

Date Tue 24 Feb
to Fri 27 Feb



Tutor Eileen Gardner

Cost Residential: £495
Non-residential: £340

Course code A2602EG



17TH & 18TH CENTURY CHAMBER MUSIC WORKSHOP

For pre-formed chamber groups (with or without singer) who should bring at least 4 pieces to work on which can be at varying stages of readiness. Work at 415 or 440Hz, with availability of one harpsichord playable at either pitch, plus Higham's transposable electric pianos. There will be an informal participants' concert before lunch on Sunday.

Date Fri 27 Feb
to Sun 1 Mar



Tutor Katharine May and
Michael Sanderson

Cost Residential: £410
Non-residential: £305

Course code M2602KM

A RECITAL BY EDEN BAROQUE

To Welcome Spring: expressive arias and upbeat instrumental music from the 17th & 18th centuries to put a positive spring in our collective steps. Programme includes music by Vivaldi, Rameau, Handel, Purcell and Telemann. Eden Baroque are Michael Sanderson - baritone, baroque violin & viola and Katharine May - harpsichord.

Date: Sat 28 Feb
8-9:30pm



Cost: £20 or £35 for 2.
Includes a glass of wine
in the bar afterwards.
Proceeds towards the
Higham building appeal.

Event code: D2602EB

IN FULL COLOUR

Spend several days painting in the studio with inspiration from many of the great colourists including the Post Impressionists, Scottish Colourists and modern English masters such as Patrick Heron, Howard Hodgkins and many others!



Date Fri 27 Feb
to Tue 3 Mar



Tutor Ceri Allen

Cost Residential: £595
Non-residential: £390

Course code A2602CA

ADVANCED WOODWIND WITH LAURENCE PERKINS

A course for wind players from Grade 8 to Diploma, working in detail on wind chamber repertoire for large and smaller ensembles. There will be an informal concert on the morning of the last day. We can pick up at 5pm from Penrith Rail Station (+£40) by prior arrangement on paying balance. All applications to be made initially through Laurence to ascertain ensemble line-up www.laurenceperkins.com/wind-serenades

Date Sun 1 Mar
to Fri 6 Mar



Tutor Laurence Perkins

Cost Residential: £870
Non-residential: £610

Course code M2603LP

WHITEWORK EMBROIDERY

Whitework is a style of needlework involving white thread stitching on white fabric, creating a subtle interplay of textures and patterns. It encompasses various techniques and styles, including the raised surface stitches characteristic of Mountmellick embroidery and delicate drawn and pulled thread work associated with Schwalm embroidery. We will tackle both techniques. Some needlework experience is recommended for this course.

Date Tue 3 Mar
to Fri 6 Mar



Tutor Angie Burt

Cost Residential: £495
Non-residential: £340

Course code C2603AB1

EXPRESSIVE LANDSCAPES WITH SOFT PASTELS

For experienced artists who want to try a new medium or become more expressive and confident with abstract techniques when using soft and hard pastels (with fixative) on different surfaces. Weather permitting, Higham's grounds will provide direct inspiration from nature alongside studio-based direction. Specialist paper available to purchase from the tutor.



Date Thu 5 Mar
to Sun 8 Mar



Tutor Robert Dutton

Cost Residential: £515
Non-residential: £360

Course code A2603RD

KING LEAR: SHAKESPEARE'S TRAGIC MASTERPIECE

Over recent decades, Shakespeare's 'King Lear' has moved from being considered 'too horrible to stage' to become accepted as Shakespeare's greatest tragic achievement. Join us to discover why and explore this tale of an ageing king who makes a disastrously wrong decision about which of his daughters loves him best.



Date Fri 6 Mar
to Sun 8 Mar



Tutor Clare Smout

Cost Residential: £360
Non-residential: £255

Course code L2603CS

CREATIVE BOOK EDGE DECORATION

Try your hand at this specialist bookbinding art to decorate or ornament the page edges of a book. Traditionally this would be a marbled or gilt finish but this workshop will focus on more creative approaches and will include the following techniques: sprinkled gold leaf (sunago), transfer print, watercolour & acrylic ink painting, graphite, gold & blind tooling (gauchering) and multi-media finishes. Students will also learn how to smooth and prepare book edges by sanding, scraping and burnishing. No previous experience necessary. Tom is a multi-award winning artist-bookbinder and an elected Fellow of Designer Bookbinders. This will be his 5th course at Higham.

Date Fri 6 Mar
to Sun 8 Mar



Tutor Tom McEwan

Cost Residential: £375
Non-residential: £270

Course code C2603TM

OIL PASTELS

Suitable for beginners and improvers. Oil pastels are a versatile medium, whether your aim is a quick sketch or something more painterly. The pure, rich colour of oil pastel can be applied using many techniques, some of which we will practice: layering, blending, impasto and sgraffito. We will also use a variety of papers and card to explore what additional effects they can bring. There will be a tutor-led painting to start with as a warm-up exercise, followed by plenty of time for you to experiment with your own pieces. Bring your own photos and sketchbooks for inspiration or find it in the landscapes and gardens at Higham. A starter pack of oil pastels is provided together with a range of surfaces. Please bring your own oil pastels and an A3 size folder to carry your work home. Also, an apron or old shirt to protect your clothes.

Date Sun 8 Mar
to Tue 10 Mar



Tutor Paul Holmes

Cost Residential: £360
Non-residential: £255

Course code A2603PH1

ELECTRIC GUITAR - DEVELOPING THE SKILLS

On this new course we will look at various aspects of electric guitar-playing, including how to develop your chord vocabulary; approaches to scales and solos; how to learn songs; strumming and rhythm playing; tone and how to practice. The sessions will be geared towards students' needs and may include other areas of interest. A very basic level of playing ability is required: if you can only play a few chords, that's fine. No prior knowledge will be assumed. The aim is to give you the tools to learn and develop what appeals to you about the electric guitar so your playing and enjoyment of the instrument is enhanced.

Date Sun 8 Mar
to Wed 11 Mar



Tutor Johnny Flockton

Cost Residential: £495
Non-residential: £340

Course code M2603JF1

HERITAGE OIL AND WATER GILDING

This is a practical course aimed at beginners although more experienced students are welcome. Over four days, you will master the art of traditional oil and water gilding. Using skilled processes, you will prepare a picture frame, picture rail, and decorative ornaments for gilding with 23.75ct gold leaf. You will gild a letter of the alphabet; students will need to inform us of their chosen letter when booking. When you have completed this course, you will have the skills to make and prepare gesso and bole using traditional recipes, and how to lay both smoothly. You will become proficient in preparing, gilding, and burnishing gold leaf on bare wood surfaces and learn the artistic skill of antiquing them. Mould-making and composition casting used in traditional antique frame conservation is an endangered heritage craft. On this course you will have the opportunity to learn the practicalities of this vanishing art. Included in the course is a fieldtrip where you will gain first-hand knowledge of historical gilded frames.

Date 4pm Mon 9 Mar
to Wed 12 Mar



Tutor Amelia Bedson

Cost Residential: £585
Non-residential: £425
(incl. some materials. Gold to be bought from the tutor at cost, c.£90)

Course code C2603AB2



BRUSHO, PENCILS AND INKS

Suitable for beginners. Explore the versatility, vibrance and spontaneity of Brusho, then add coloured pencil, pen and ink to make art that is truly unique. Just bring your own coloured pencils (tutor will be using Derwent Inkntense), together with an apron or old shirt to protect your clothes and an A3 size folder to take your work home. All other materials will be provided.



Date Tue 10 Mar
to Fri 13 Mar



Tutor Paul Holmes

Cost Residential: £495
Non-residential: £340

Course code A2603PH2



INSIDE ARTISTS' STUDIOS

Join our resident curator and art historian Lizzie visiting local artists and makers in their studios to find out why they do what they do. Explore everything that happens in the studio, from the practical reality of a daily routine to the more existential questions that underpin a creative life. Look forward to some wide-ranging, lively discussion about making and looking at art.

Date Wed 11 Mar
to Fri 13 Mar



Tutor Dr Lizzie Fisher

Cost Residential: £380
Non-residential: £275
(incl. field trips)

Course code A2603LF

TICKET TO RIDE - PART 2

This course will explore The Beatles and other 'British Invasion' groups of the 1960s, most of whom had roots in American Rhythm and Blues. We will also consider the development of Motown Records from a singles-based company to a more album-based one, due to the pioneering work of Stevie Wonder and Marvin Gaye. UK folk-rock acts, Fairport Convention and Steeleye Span, who drew inspiration from traditional English folk melodies, will complete the picture. There is no requirement to have done Part 1 to enjoy Part 2!

Date Fri 13 Mar
to Sun 15 Mar



Tutor Chris Rodwell

Cost Residential: £360
Non-residential: £255

Course code M2603CR

UPHOLSTERY

Learn to strip a small item of furniture (e.g. a chair, stool, ottoman or headboard), tackle interior paddings and rebuild it using traditional or modern upholstery techniques as appropriate. You bring the item of furniture you want to restore and the fabric you would like to use; all the fillings, specialist tools, technical materials and expertise will be provided. In order to ensure your time is well spent, you must contact Cathy directly prior to your course to discuss your project needs. Contact details will be provided on booking.

Date Fri 13 Mar
to Sun 15 Mar



Tutor Cathy Newbery

Cost Residential: £360
Non-residential: £255

Course code C2603CN

JAPANESE BORO SLOW STITCHING

Simply spend peaceful time being creative. Slow stitching is perfect for experiencing mindful relaxation. We'll be inspired by the Japanese Boro tradition that values cloth as a precious resource, extending its life by reusing every scrap. Working intuitively, you'll discover freedom in working without pre-planned designs. Beautiful results and rewarding experience! No sewing skills needed.



Date Fri 13 Mar
to Sun 15 Mar



Tutor Carolyn Shepherd

Cost Residential: £360
Non-residential: £255

Course code C2603CS

LAKELAND BOOK OF THE YEAR WRITERS' MASTERCLASS

Join award-winning author Katie Hale for an intensive masterclass for aspiring writers in the tranquil and inspiring setting of Higham Hall College. Katie is an internationally recognised novelist and poet living in the Lake District. Her debut novel *My Name is Monster* was published in 2019 and has since been translated into German and Italian and she won a Northern Debut Award for her first poetry collection, *White Ghosts* (2021). Designed to provide valuable critical support to those who might be at the start of their writing journey or always wanted to become a published writer, this 1-day workshop is organised in conjunction with the Lake District Book of the Year Award to help nurture creative talent in Cumbria. In this workshop, we will explore how to create complex and believable characters that drive the story. Looking at examples from both poetry and fiction, and including critical advice on how to avoid cliché, participants will develop characters who may not be likeable – but are always compelling, and who live on after the last page is turned.



Date Sat 14 Mar
10am to 5pm



Tutor Katie Hale

Cost £120 incl. lunch and refreshments

Course code D2603KH



STRING CHAMBER MUSIC WORKSHOP

A course for pre-formed string chamber music groups, working at self-programmed repertoire. Catherine Yates, Heather Bills and Mary Dainton will join the tutoring team.

Date Sun 15 Mar
to Tue 17 Mar



Tutor Louise Latham

Cost Residential: £370
Non-residential: £265

Course code M2603LL

SPIRITUALITY FOR SCEPTICS: HINDUISM AND ANCIENT GREEK PHILOSOPHY

Join us for an enlightening four-day journey exploring the intersections of Hinduism and Ancient Greek philosophy. This course invites sceptics and seekers to engage with key concepts like Dharma, Eudaimonia, and the nature of the self. Participants will delve into significant texts, guided meditations, and reflective discussions aimed at fostering personal growth. Through comparison, interpretation, and practical spiritual exercises, discover how these ancient traditions can inform contemporary ethical dilemmas and enhance your understanding of spirituality in everyday life.

Date Tue 17 Mar
to Fri 20 Mar



Tutor Darren Harper

Cost Residential: £495
Non-residential: £340

Course code L2603DH

FIRED ENAMEL PAINTINGS ON PANELS: PICTORIAL LANDSCAPE, SEASCAPE, FLORAL OR ABSTRACT

Enamel painting can be done on copper, silver or steel. Students will learn how to paint and fire enamel onto panels ranging in size from one- to 4-inch square in their chosen subject of landscape, seascape, floral or abstract. We will go over good kiln practice, firing temperatures according to colour used, and correct visual context. Modern techniques such as sponge painting and overlay will be covered alongside traditional techniques. All materials for this course can be purchased from the tutor at cost.



Date Tue 17 Mar
to Fri 20 Mar



Tutor Sharon Ford

Cost Residential: £495
Non-residential: £340

Course code C2603SF

ACOUSTIC GUITAR - IMPROVERS

This course will aim to build on aspects covered during the basics and beyond, such as expanding your chord shapes, rhythm and strumming, learning songs and styles. We will look at improvising and scales. In addition, we will cover music theory to help you support your knowledge. The course will be tailored to each student's needs and level and there will be no pressure to perform. Students are welcome to bring steel or nylon string guitars.

Date Tue 17 Mar
to Fri 20 Mar



Tutor Jonny Flockton

Cost Residential: £495
Non-residential: £340

Course code M2603JF2

PATCHWORK: LONE STAR QUILT

In this course we will tackle the Lone Star quilt, a pattern which is believed to have originated in England as the Mathematical Star before it spread to America and became the Texas Lone Star. It involves a lot of point-matching and dreaded 'Y-seams' but you will be given lots of tips and help to avoid the pitfalls involved with these techniques. Not suitable for complete beginners. If you have attended previous classes with Lis and just want to come and quilt with the group, you may bring a project of your own project or choose to do a project offered previously at Higham by this tutor.

Date Wed 18 Mar
to Sat 21 Mar



Tutor Lis Binns

Cost Residential: £495
Non-residential: £340

Course code C2603LB

TALK & TEA: A PHILOSOPHER'S GUIDE TO CHANGE

In this talk, we'll explore philosophical perspectives on change, drawing on insights from al-Ghazali, the Daodejing, and John Dewey. Al-Ghazali sees change as a divine opportunity for spiritual growth, the Daodejing encourages harmony with life's flux through wu wei (effortless action), and Dewey views change as a force for learning and adaptation. In reflecting on these views, participants will discover ways to approach change with intention, flexibility and resilience; fostering a deeper engagement with life's transformations.



Date Fri 20 Mar
2-4pm

Tutor Darren Harper

Cost £18 or £32 for 2 incl.
refreshments

Course code D2603DH

SILVER CLAY JEWELLERY

Silver Clay is a remarkable material made up of fine silver particles, a plant-based binder and water. It can be moulded, rolled, textured and shaped to create hand-crafted pieces which are then fired and polished to make fine hallmark-quality silver jewellery. With expert guidance, make up to three professionally-styled pieces over a weekend. Those with some experience may be supported to work on their own projects. A materials kit will be available to purchase from the tutor at the cost of £68 (subject to silver prices).



Date Fri 20 Mar
to Sun 22 Mar

Tutor Tracey Spurgin

Cost Residential: £360
Non-residential: £255

Course code C2603TS

RECORDERS: POST-BEGINNERS

Do not be scared to make mistakes - have fun and make music! This is a chance for those with a developing interest in recorder playing to progress their musicality in a gentle way with like-minded people under professional guidance.



Date Fri 20 Mar
to Sun 22 Mar

Tutor Annemarie Klein

Cost Residential: £360
Non-residential: £255

Course code M2603AK

**CAPTURE SCOTTISH SCAPES:
EXPLORE EXPRESSIVE MIXED
MEDIA**

Create expressive landscape paintings inspired by Scotland using reference photos provided by your tutor, who will encourage you to paint loosely, work in layers and explore colour through a combination of group activities and one-to-one tutoring. Mixed media, for all levels.



Date Sun 22 Mar
to 9am Fri 27 Mar

Tutor Marion Boddy-Evans

Cost Residential: £675
Non-residential: £390

Course code A2603MBE

LINO-CUT PRINTMAKING

Using traditional lino-cut printmaking techniques, print your own images to create individual and decorative cards or pictures with expert guidance from Clare Melinsky. Clare is a renowned illustrator whose beautiful lino-cut designs are used on product packaging, book covers, magazines, cards and even postage stamps. All tools needed are provided as part of the course: we also provide heated work surfaces to soften the traditional linoleum block to make it much easier to cut and carve. The course will benefit both beginners and those with some experience. There is enough time to make several designs. Materials available to purchase from tutor at cost.



Date Sun 22 Mar
to Wed 25 Mar



Tutor Clare Melinsky

Cost Residential: £495
Non-residential: £340

Course code C2603CM

PIANO WORKSHOP

A performance-based workshop with Martin Roscoe, who is taking the baton from John Gough. Martin is one of the UK's most loved and respected pianists and educators. A prolific recording artist and one of the most broadcast pianists on BBC radio, he appears regularly at Wigmore Hall and has longstanding associations with many of the UK's leading orchestras.

Up to 10 players of Grade 7 standard and above will prepare a short recital of between 15-20 minutes to play to the other participants. Martin will provide constructive suggestions for improving aspects of interpretation, technique, and performance. All is given in a friendly, supportive and non-competitive atmosphere with many opportunities for group discussion. If possible, please bring along extra copies of the works being performed for the other players. There will be a joint recital on the final morning where non-performing listeners are also welcome.

Date Sun 22 Mar
to Wed 25 Mar



Tutor Martin Roscoe

Cost Residential: £495
Non-residential: £340

Course code M2603MR

TRY FOR A DAY: BOTANICAL ART

This informal and relaxed workshop is a gentle introduction to the delights of drawing from nature. You will spend the morning building confidence while closely observing individual flower petals, leaves and berries and practising watercolour techniques. The afternoon is spent painting flowers and plants from the beautiful gardens here at Higham. Everyone welcome, no experience needed. You may surprise yourself! All materials supplied, including a sketchbook to take home and keep on painting.

Date Sun 22 Mar
10am to 5pm



Tutor Lis Bramwell

Cost £115 incl. lunch & materials

Course code D2603LB

THE ART AND ARCHITECTURE OF THE EARLY STUARTS 1603-1660

In this short course we will explore something of the revolution in art and architecture in England during the first half of the seventeenth-century, associated with such names as Inigo Jones, Charles I, Anthony Van Dyck and Peter Paul Rubens. We will also consider the effects of Civil War, the Puritan Republic and the Restoration on iconography and building.

Date Wed 25 Mar
to Fri 27 Mar



Tutor Dr. Andrew Lacey

Cost Residential: £360
Non-residential: £255

Course code H2603AL



LEATHERWORK: HAND-STITCHED DOCUMENT WALLET

Learn the traditional craft of leatherwork and make a quality item that will last you for years. In this course you will learn how to make a hand-stitched document wallet that will fit an A5 journal, iPad or documents. You will be able to hand-tool your document wallet to personalise it.

Date Wed 25 Mar
to Fri 27 Mar



Tutor Roslyn Whiting

Cost Residential: £400
Non-residential: £295
(incl. materials)

Course code C2603RW

HIGHAM CHOIR: SONG OF SONGS

If you are an experienced choral singer and have reasonable to good sight singing, then we warmly invite you to join us as we explore the beautiful and varied settings of medieval and renaissance interpretations of this rich collection of Old Testament poetry. Pieces to include the three part Ego Flos Campi by Clemens non Papa, Quam Pulchra Es by Alessandro Grandi, and setting of texts by Palestrina, Dunstable and others including the mystic Hildegard von Bingen, who used the Songs of Songs as a framework for much of her writing. Please email the tutor Deborah directly at deborah_catterall@yahoo.com to check suitability and voice range before applying.

Date Fri 27 Mar
to Mon 30 Mar



Tutor Deborah Catterall

Cost Residential: £495
Non-residential: £340

Course code M2603DC

BOOKBINDING: THE BRADEL BINDING

A Bradel binding (also called a bonnet or Bristol board binding) is an 18th century German case binding. It most resembles a case binding but instead, it is built up on the book. Many bookbinders consider the Bradel binding to be stronger than a case binding, and there is more than one way of making one. This will be a fun book to make as we will be colouring the edges and using coloured cloth or even leather and marbled paper to cover it with, to make it just that little bit more special.



Date Fri 27 Mar
to Mon 30 Mar



Tutor Doug Mitchell

Cost Residential: £495
Non-residential: £340

Course code C2603DM

EXPERIMENTAL DRAWING

A popular and fun course to free up your practice. Experiment with different approaches to drawing, taking inspiration from artists both contemporary and traditional. This is a great class for those looking to progress and expand their drawing methods.



Date Sat 28 Mar
10am to 4pm



Tutor Ceri Allen

Cost £100 incl. lunch & refreshments

Course code D2603CA

STRING SERENADES PLUS

From Mozart's ever popular Eine Kleine Nachtmusik we will take in Mendelssohn's stunning Octet and the string serenades by Dvorak, Tchaikovsky and Elgar not forgetting Grieg's Holberg Suite. English composers made an important contribution to the string orchestra and we will finish with familiar works by Holst, Vaughan Williams and Warlock.

Date Mon 30 Mar
to Wed 1 Apr



Tutor Ian France

Cost Residential: £360
Non-residential: £255

Course code M2603IF

CELEBRATE THE ENERGY OF SPRINGTIME IN SKETCHING AND PAINTING

Lift your heart in celebration of nature's return after the sleep of winter. On this course we will harness our feelings for nature through outdoor sketching at beautiful landscape locations in the hills and on the coast and through studio drawing and painting with expert guidance throughout from your tutor.



Date Mon 30 Mar
to Fri 3 Apr



Tutor Lionel Playford

Cost Residential: £635
Non-residential: £430

Course code A2603LP

LAKES, RIVERS AND WOODLANDS - PAINTING NATURE WITH ACRYLICS

Follow Kara's step-by-step guide to producing two beautiful paintings of both lakes/ivers and spring woodlands using acrylic paints, brushes and implements that you are able to bring. Kara will teach you to employ a range of techniques that will help you to achieve realism, impressionism and coherent tonal qualities, pushing the boundaries of the acrylic medium.

Date Tue 31 Mar
to Fri 3 Apr



Tutor Kara Strachan

Cost Residential: £495
Non-residential: £340

Course code A2603KS

ADDITIONAL INFORMATION

COURSE FEES

Non-residential course fees cover tuition, morning coffee/afternoon tea, lunch and dinner.

Residential fees cover tuition, accommodation and all meals and refreshments.

Materials: In addition to the course fees, there may be some additional itemised costs to cover materials provided as part of the course. These are often paid direct to the course tutor at the start of the course and are not included in the course fees unless otherwise stated. Full details in the course programme.

Field trips: Some courses involve field trips to locations around Cumbria and the Borders. Where this is the case, course fees include a small additional charge to cover associated costs.

Course programmes are available on request and are sent with your booking confirmation.

OTHER EVENTS

The ticket price for lectures and performances include refreshments unless otherwise stated.

BURSARIES AND ASSISTED PLACES SCHEME

If you are in receipt of individual State Benefits or aged 18-25, you can apply for either:

- an assisted place: up to 20% discount on course fees.
- a bursary: a one-off discretionary award up to the value of 70% of course fees.

Please complete an application form available from the office: 017687 76276
admin@highamhall.com

Bursaries and the assisted place scheme are supported by Friends of Higham membership subscriptions. Awards are made at the discretion of Higham Hall College and subject to availability of funds.

TO BOOK A PLACE

Please call the office on 017687 76276 to enquire about a course, book a place and discuss your accommodation requirements.

1-day (non-residential) workshops

Full fee payable on booking.

Residential courses

A non-refundable deposit of £50 is required to reserve a place on a residential course. Payment of any outstanding course fees must be made no less than one month before the course start date.

You can book/pay

- over the telephone using a credit or debit card
- by sending a cheque made out to 'Higham Hall College Limited' with a completed booking form (enc.)

Please note, your booking will not be confirmed until this payment has been processed.

CANCELLATION POLICY

When paying the outstanding balance, you have the option to take out our cancellation cover at £5 per night. This guarantees an 80% refund of the course fee (less non-refundable deposit of £50) if you need to cancel your place within one month of the course start date because of illness, injury or death of self or close relative (a doctor's certificate or equivalent evidence may be required). Please note we are unable to issue any refund without this cover although your own travel insurance may cover you.

COVID-19

There are no current COVID-19 restrictions in the UK. If you have COVID-19 you should try to stay at home. To help us protect other students who may be vulnerable, please call to inform us if you have a positive COVID-19 result in the week before your course.

ADDITIONAL INFORMATION

STAYING AT HIGHAM

We hope you will make yourself at home at Higham. Explore the garden or climb a fell; there is a drying room for damp clothes and boots. If not in use for a course, the Drawing Room is a cosy place to while away a quiet hour or two. Browse the bookshelves and baskets of donated books for reading material while you are here. The Bar is open nightly 6-10:45pm. We have umbrellas and hot water bottles and a small stock of travel essentials if you have forgotten anything. There is a member of staff on duty 24/7 so if you need help with anything, just ask.

On the menu

We serve a hearty breakfast, 2-course lunch and 3-course dinner every day. Morning coffee and afternoon tea with homemade biscuits and cakes are also provided. All meals are prepared freshly in our kitchens from locally sourced ingredients so we are able accommodate any dietary or allergy requirements. Please tell us about any dietary needs on booking.

Accommodation

Every room is different at Higham. We offer single, twin and double rooms. All have private bathrooms but not all are ensuite.

We charge an ensuite supplement of £10pppn. Double occupancy of twin rooms is discounted at a rate of £5pppn. Carers sharing a room will be charged for meals only. Bedroom accommodation in the main house is on the first floor, and we have a stairlift to help with

access. There are also a number of ground floor rooms with level access in the Gatehouse and Bungalow, which are a short distance from the main house. We offer one fully accessible (single) bedroom. Please get in touch to discuss any mobility issues so we can ensure you are offered appropriate accommodation.

We have set aside two ground floor rooms for guests who wish to bring their dogs. There is an additional charge of £30 per dog to cover housekeeping costs. Please check availability on booking.

There is plenty of free parking on site.

Hook-ups and a sluice room are available for students wishing to stay in campervans or motor homes. Please tell us in advance. A charge of £15 per vehicle per night will be due on booking.

Electric car charging is no longer possible on site. Please call for guidance on nearest charging points.

Space permitting, we also welcome guests who are not attending courses.

B&B standard room £72 (ensuite +£12pppn)

Breakfast £14.40, Lunch £19.20, Dinner £31.20

Please note these prices include VAT.

Alternative B&B accommodation is available in the local area; please ask the office for recommendations.



PLEASE SUPPORT US

Higham Hall College is an educational trust (charity no.1124959), one of an increasingly small number of independent colleges across the UK offering informal adult education in a residential setting.

We rely on the practical support of volunteers with a wide range of tasks and we need to raise funds each year to support the cost of running our programmes, provide bursaries and assisted places to students on low incomes, and care for our wonderful historic building and grounds.



Looking for gift ideas?

All your purchases help support Higham. We have a selection of tutors' prints, books and cards for sale. We also have jute bags capacious enough to carry all your crafting gear, reusable insulated stainless steel water bottles handy for field trips, and gorgeous new dishwasher-proof, bone china mugs designed by tutor Susan Christopher-Coulson.

Higham gift cards are also available and can be credited with any amount, valid for 2 years.



Volunteer

We are hugely grateful to our volunteers for the hard work they put in all year round to help us keep Higham running, from gardening or driving the minibus to making curtains. If you have a skill and can offer a few hours of your time either on a regular weekly basis or for a few concentrated days, please get in touch.

Donate

We welcome one-off donations towards specific projects where your gift will have a transformative impact. Please visit our website to find out more.

Become a Friend of Higham

Make a lasting impact with a regular monthly or annual donation that will help us sustain Higham all year round.



Higham Hall College
is an educational trust
supporting lifelong learning
in the arts, natural history
and humanities through
workshops, lectures,
residential courses and
retreats in the English Lake
District.

for the creative and the curious...



HIGHAM
HALL

Higham Hall
Bassenthwaite Lake
Cockermouth
Cumbria
CA13 9SH

017687 76276
highamhall.com

We are also a company limited by
guarantee and registered in England.
Company no. 06421365 Charity no.
1124959 VAT no. 927 4556 96