



HIGHAM
HALL

STUDY
BREAKS
IN THE
LAKES

APRIL -
SEPTEMBER 2026







Contact us

017687 76276
admin@highamhall.com

Follow us

 @highamhall

 Higham Hall

www.highamhall.com

Image credits

Cover artwork:
Sally Alexandre

Map:
Custard Graphic Design

Other photography:
© Steve Razzetti/
Higham Hall College

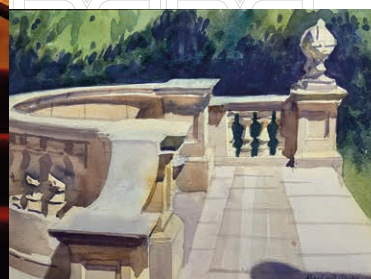
Design and print
Reeds (Cumbria) Ltd

WELCOME



to our Summer programme, packed with regular favourites and some exciting new courses. The Sunday lecture series is back with a Cumbrian theme and we have a couple of free events planned, including a summer verge walk on National Meadows Day - 4 July - and an open day on 11 July as part of our celebrations marking 50 years of adult education at Higham.

This anniversary is a great achievement and a moment to savour. Higham has been a beacon for lifelong learning since 1976, where creativity and curiosity flourish. Last year we hosted 420 courses, lectures and performances and welcomed over 3,400 students. As we look to the future we will continue to work to protect and preserve this remarkable institution and ensure Higham is the best it can be for everyone.



In November, thanks to a successful first year of fundraising, we also began work on the most urgent roof repairs. We plan to tackle the roof in stages as and when funds allow, in the hope that we will be able to complete the work by 2028, the 200th anniversary of the building. We are hugely grateful to everyone who donated to our building appeal: your support means that we are able to do this vital work.



By way of launching into our second year of fundraising, we have produced a series of three limited edition giclée prints depicting different views of Higham by the distinguished local artist Philip Macleod Coupe (1944-2013), who taught at Higham for many years and gave several works to the college collection. We would like to thank the artist's family who have kindly granted permission to reproduce these works. The prints are available for sale at £30 each (unframed) and all proceeds will go towards the building appeal.

Dr Elizabeth Fisher, Principal



In November we welcomed Sean Hannah to the team: he succeeds Ruari Mostyn in the role as Head Gardener and will be leading the summer verge walk on National Meadows Day (July 4). Do say hello if you see Sean out and about.

Over the next few years Sean will be leading a development plan to improve and enhance the garden so that it might provide further opportunities for learning, inspiration and contemplation while practicing more responsible, sustainable environmental stewardship.

Some of the things we are doing include: tackling invasive species and thinning woodland areas to promote natural regeneration of the ground layer and safeguard our veteran trees by reducing competition that would negatively impact their longevity and nature value; creating a range of interlinking habitats in the form of native woodlands, wetlands, semi-natural hay meadows, ornamental gardens and woodlands with planting schemes to increase biodiversity, support wildlife and extend the season of interest; restoring historic features and improving paths to make access to the garden easier for everyone.



COURSES

All courses take place in the main house or studio, a converted stable which is reached via an internal courtyard. All teaching spaces are on the ground floor and have level access.

All courses start with dinner at 6.30pm on the first day and end after lunch on the last day unless otherwise noted in the course programme.

Day courses, lectures and concerts are available to book online. If you have a smartphone or device, you can scan this QR code or visit the website: www.trybooking.com/uk/eventlist/highamhallcollege.



Some courses run every year and there is often great demand for places. If you wish your name to be added to our 'register an interest' list for a particular course you can do this up to 12 months in advance. Just call and speak to a member of the office team.

You can also always call to enquire about any course or event, to book a place and to discuss your accommodation requirements. Our office team – Chris, Joan, Helen, Ruth and Amy – are always happy to help. We do not have an answerphone service so please be patient if you can't get through at first.

Details correct at publication. Please note we reserve the right to make changes to the programme if necessary.

A large print version of this brochure is available to download from our website: www.highamhall.com

STAY UP TO DATE

Any alterations and late additions to the programme will be advertised in our e-newsletter.

Subscribe at www.highamhall.com



Course Categories



Music



Wellbeing



Literature and film



Textiles



Nature



History



Crafts



Philosophy



Visual Arts



CIRCLE DANCE

All are welcome to join in this inclusive form of community dancing where no partners are required. For newcomers and the experienced alike. Explore music and dances drawn from cultures and countries around the world; the pace varies from lively to meditative. A tonic for body and mind!

Date 1 to 3 April

Tutor Anne-Lise Kryger

Cost Residential: £365
Non-residential: £260

Course code M2604AK



PALETTE KNIFE EXPERIMENTS

Learn to use the palette knife as part of your mark-making repertoire. Have fun applying paint without a brush! Using drag, scrape and spread techniques. Explore the sculptural qualities of paint playing with textures and layers and mixing colours directly on the surface of the canvas. This humble artist's tool can unlock many new possibilities for abstract and chance effects. All materials provided.



Date 3 to 5 April

Tutor Coral Grace

Cost Residential: £385
Non-residential: £280
(incl. materials)

Course code A2604CG



INTRODUCTION TO HAND-BUILT POTTERY WITH SLIP-DECORATED SLABS

Suitable for complete beginners, although some pottery experience will be advantageous to students. Mono-printing with coloured slip is a fun way to decorate a pot before you make it. The technique lends itself to the expressive decoration of boxes, vases, jugs or anything else you can build with slabs. The coloured slip is applied with a slip trailer onto paper and then transferred onto the flat clay slab using a rolling pin. When the clay is leather-hard you can build your slab pot with seamless edge to edge decoration. The pots are fired and glazed after the course by the tutor and can be sent on at cost, or collected from Higham when they are ready.

Date 3 to 5 April

Tutor Chris Barnes

Cost Residential: £415
Non-residential: £310

Course code C2604CB



CEILIDH BAND FOLK ENSEMBLE EASTER JAM(BOREE)

For musicians of any standard with a concert pitch instrument such as violin (fiddle), viola, cello, mandolin, mandola, banjo, ukulele, guitar, flute whistle, piano accordion, melodeon, concertina etc. Parts for transposing instruments in Bb, Eb and bass clef will be available. Some basic music reading and playing skills are essential so that you are able to take part and enjoy the course. Guitarists should be able to follow chord symbols and play basic accompaniment skills. We will play a wide range of traditional and contemporary folk music from the British Isles, America and beyond with parts tailored to all abilities.

Date 3 to 7 April

Tutor Chris McShane

Cost Residential: £605
Non-residential: £395

Course code M2604CM



FLOWER PAINTING FOR BEGINNERS

Have you thought of trying to paint flowers in watercolour but not to sure how to start? Then this course is for you. With step-by-step demonstrations we will be covering all the basics to enable you to paint flowers with confidence.



Date 5 to 8 April

Tutor Jane Beech

Cost Residential: £505
Non-residential: £345

Course code A2604JB



WOODCARVING: CREATIVE RELIEF CARVING

Relief carving is the process of cutting a pattern or design into a flat surface. For those new to the craft, Sharon will gently guide you through the process of transforming a block of wood into a unique image in relief with generous one-to-one support, technical instruction and extensive knowledge of her subject. Bring your own visual sources or use Sharon's books for inspiration. Learn to transfer a pattern, use chisels safely and try a range of carving techniques. For beginners and experienced woodworkers. Those who have attended previous courses may bring projects of their own to work on.

Date 6 to 12 April
9am

Tutor Sharon Littlely

Cost Residential: £850
Non-residential: £495

Course code C2604SL



PICK 'N' MIX

An assortment of songs to suit all levels, from folk, gospel and African traditions to classic pop songs and a bit of stage and screen too. We will work at a level to suit the group and have a fun few days adapting our vocal techniques to suit the varied styles.

Date 9 to 12 April

Tutor Chris Hale

Cost Residential: £505
Non-residential: £345

Course code M2604CH



ART HISTORY STUDY DAY: WOULD I LIE TO YOU?

The first of a new series of study days exploring concepts and ideas that shape the world we live through the lens of art history. Drawing on examples from the Renaissance to contemporary art, we start with the topic of mimicry and fakery: from trompe l'oeil to AI in a post-truth world. We will think about the real and fictional, spectacular and banal; and what it means to edit, manipulate or recreate as a creative tactic. Friendly and engaging, these sessions are all about broadening knowledge, being curious and exploring different ways of seeing life through art.

Date 9 April
10am to 4pm

Tutor Alison Critchlow &
Dr Lizzie Fisher

Cost £115 includes lunch

Course code D2604AC



INNER SOLWAY HERITAGE

Minibus fieldtrips exploring the rich heritage of the inner Solway coast of Cumbria in England and Dumfries and Galloway in South West Scotland. Taking in the local history, landscape, lesser known heritage sites and cultural activities of an intriguing part of the British coast.

Date 10 to 13 April

Tutor Fiona Stoddart

Cost Residential: £555
Non-residential: £395
(incl. field trips)

Course code H2604FS



WOVEN TAPESTRY: BEGINNERS

Whether you are a beginner or in need of a refresher, this workshop is designed to give you a solid technical grounding in tapestry weaving. With expert guidance from award-winning tapestry and constructed textiles artist Louise Martin, participants will learn essential weaving techniques from setting up a loom, weaving a design, to finishing your tapestry. All equipment provided.

Date 12 to 14 April

Tutor Louise Martin

Cost Residential: £370
Non-residential: £265

Course code C2604LM1



BOTANICAL ART USING COLOURED PENCILS: BUD BURST

An opportunity to observe and record from nature the fresh new flower and leaf forms as they emerge in spring. Enjoy mixing a crisp new colour palette using coloured pencils to create either a single study or composition of smaller subjects. The course is suitable for beginners and those with some experience with coloured pencils.

Date 13 to 17 April

Tutor Susan
Christopher-Coulson

Cost Residential: £605
Non-residential: £395

Course code A2604SCC



ARTS & CRAFTS IN THE LAKES: WILLIAM MORRIS AND HIS FRIENDS c.1850s-80s

Morris, his close friends and fellow designers inspired the Arts and Crafts movement. Though much associated with the south of England, this introductory course will examine their activities in the Lakes. Aristocratic benefactors, friendships and creative co-operation produced work in painting, architecture and the decorative arts that can be seen in their original settings. We will discuss, consider and examine chronology, changes in style and specific examples of work in different media. Morris' belief in values of natural beauty, craftsmanship, education and individualism in the face of industrialisation, social injustice and mass tourism have relevance today.

Date 13 to 16 April



Tutor Janet Sinclair

Cost Residential: £535
Non-residential: £375
(incl. field trips)

Course code H2604JS

WOVEN TAPESTRY: SOUMAK

An incredibly versatile technique which can be used regardless of shed, for outlining, be added for decoration, to 'draw' onto the woven surface or to create art pieces using one or multiple weft threads and yarns. May be made in alternating directions, over variable numbers of warps, with single or multiple yarns, reversed, or woven throughout a piece, all of which will give different surface texture and rhythms. We will try out the variations on this technique and explore ways to include them in a design of your own.

Date 14 to 16 April



Tutor Louise Martin

Cost Residential: £370
Non-residential: £265

Course code C2604LM2

WOVEN TAPESTRY: VARIATIONS ON PLAIN WEAVE

Generally when weaving we take a bundle of yarn as weft and simply weave under and over alternate warps to form plain weave. This course looks at alternate choices:

- laying in weft threads through the same shed in particular ways
- using half passes to create a defuse surface
- free brocading to create texture within a plain weave background

Suitable for weavers with some experience.

Date 16 to 19 April



Tutor Louise Martin

Cost Residential: £510
Non-residential: £350

Course code C2604LM3

INTRODUCTION TO MEDIEVAL MANUSCRIPT ILLUMINATION

Use skills passed down by medieval craftspeople to create small designs using 23 carat gold and pigments. No drawing experience is necessary. A selection of medieval and contemporary designs are available to trace, including illuminated letters, but creativity is welcomed.



Date 17 to 19 April



Tutor Toni Watts

Cost Residential: £385
Non-residential: £280
(incl. materials)

Course code A2604TW1

FURTHER MEDIEVAL MANUSCRIPT ILLUMINATION

This is an intermediate level course. Make perfect manuscript gesso using a traditional recipe, lay it smoothly and gild with loose leaf gold. This class is full of practical tips, helping you to achieve raised areas of gilding with a mirror shine. Those who are already able to make and lay gesso are welcome to work on their own projects with help and advice from the tutor.

Date 19 to 21 April



Tutor Toni Watts

Cost Residential: £385
Non-residential: £280
(incl. materials)

Course code A2604TW2

SPRING YOGA AND WALKING

A perfect mix of hatha yoga sessions (working on postures, breathing exercises and relaxation) and guided hill walks of up to 5 miles, sometimes over rough and steep ground (requiring a reasonable level of fitness) among the peaceful northern fells; the purpose of which is to leave the student supple, relaxed, refreshed and uplifted. The course is suitable for beginners and experienced students alike.



Date 19 to 23 April



Tutor Gill and Alan Hunter

Cost Residential: £715
Non-residential: £490
(incl. field trips)

Course code F2604GH

THE GORGEOUS NOTHINGS: POETRY & PAINT

Playful yet serious, this is a practical creative course exploring the spaces between and around ideas, the gaps and pauses left for imagination to rest and expand, the subtle interplay between physical objects and the written / spoken word. Taking inspiration from different cultural influences, and using the work of ceramicist Edmund de Waal and poet Emily Dickinson as a jumping off point, we will use a variety of innovative approaches to mark-making and text to consider creative space – gaps & dashes – and how we place our thoughts and ideas in the world.

Date 19 to 21 April



Tutor Susan Allen and Alison Critchlow

Cost Residential: £465
Non-residential: £360
(incl. materials)

Course code A2604SA

WHAT IS PAINTING - A STUDIO PRACTICE-LED EXPLORATION

Through group and individual tutorials working in the studio, explore and develop your understanding of your use of paint as a conceptual and material substance, extend your technical responses to your chosen medium, and consider your practice within the context of contemporary painting, and contemporary art developments more widely.

Date 21 to 26 April
9am



Tutor Steve Humble

Cost Residential: £690
Non-residential: £400

Course code A2604SH

RUSKIN LACE

Ruskin Lace originated as a cottage industry in the Lake District in the 1880s. Karen, a leading expert and author on Ruskin Lace, brings extensive knowledge to support and guide you whether it is your first encounter with this heritage craft or you are already addicted! You will work on linen fabric using a combination of drawn thread and cut linen work, with the distinctive geometric designs created using needlelace techniques specific to this type of lace. This course is suitable for both beginner and experienced needleworkers. If required, a starter pack (£15) is available to purchase from the tutor.

Date 22 to 24 April

Tutor Karen Quickfall

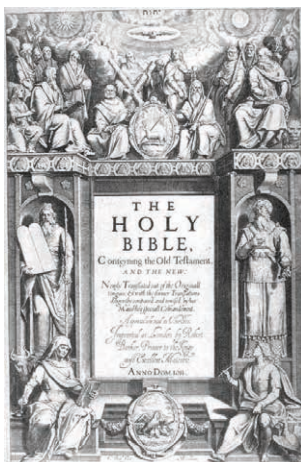
Cost Residential: £365
Non-residential: £260

Course code C2604KQ



THE MAKING OF THE ENGLISH BIBLE

In 1500 anyone found in possession of a bible in English risked being burned at the stake. Soon pioneers like Tyndale and Coverdale would begin to provide printed English Bibles and a reluctant Henry VIII was persuaded by Thomas Cromwell to put a copy of the Bible in every parish church. Further changes followed in the reign of Elizabeth I until a new project was envisaged by James I: the production of the Authorised Version (1604 to 1611). Though it has become one of the glories of the English language its initial acceptance was, at best, lukewarm and Puritans were suspicious. But it became the Bible until more accurate translations began to appear in the late 19th and 20th centuries. This course will explore the tangled story of the emergence of the Bible in English.



Date 24 to 26 April

Tutor Michael Tunnicliffe

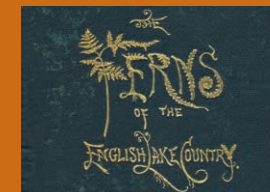
Cost Residential: £365
Non-residential: £260

Course code H2604MT



SUNDAY LECTURE: FERN FEVER ON THE FELS

This talk will tell the story of the Victorian fern craze in the Lake District, from the Romantics' early appreciation of the plant through fern tourists, books, guides, and nurseries to Kendal Mint Cake and even Custard Cream biscuits. Dr Sarah Whittingham FSA is an independent historian, who has written books on architectural, garden, and social history, including *Fern Fever: The Story of Pteridomania*. She is currently researching the social and cultural history of bracken in Cumbria.



Date 26 April
2 to 4pm

Tutor Sarah Whittingham

Cost £10 each including refreshments

Course code D2604SW



BIRD SONGS AND CALLS

There is no doubt that familiarity with bird songs and calls plays an essential part in the process of locating and identifying them. In particular, the clamour of bird song in springtime woodland gives an indication of the both the number and identity of birds present; information that helps build a picture of bird behaviour and wider ecosystem health which might otherwise be overlooked. Making the most of the array of summer migrants at this time of year, this course will help everyone from beginners to the more experienced add to their knowledge and understanding of birds. It will involve multiple full-day field trips with a fair amount of walking.

Date 27 April to 9am
1 May

Tutor Keith Offord

Cost Residential: £630
Non-residential: £395
(incl. field trips)

Course code N2604KO



FOLK N FELL 2026

Now a popular fixture in the calendar, the Folk n Fell weekend brings three outstanding musicians together to lead a weekend of folk and acoustic ensemble playing, singing and informal sessions. There will be a period of free time on Saturday for those who want to explore the area. It's a great way to enjoy yourself, learn new material and meet new friends. Please note that we do not offer guided walks.

Organised by Vince Taylor (info@tynevalleyfolktrain.co.uk)

Date 1 to 3 May

Tutors James Fagan,
Dave Wood, Eleanor Mooney

Cost Residential: £375
Non-residential: £270

Course code M2605FF



CREATE A CHARACTER - LINE AND WASH

A short course on illustration using pen and watercolour. The course will be built along a small project and incorporate pen and watercolour techniques to help you create a character. It is fun and hard work but will help you develop confidence to handle the medium, and create something new. Linda has had a career as an illustrator for both children's books and TV including the BBC's *Bagpuss* and *The Clangers*.

Date 24 to 26 April

Tutor Linda Birch

Cost Residential: £365
Non-residential: £260

Course code A2604LB



BLOCK PRINTING

We will explore tessellation, pattern and repetition through the prism of Block Printing using lino and rubber stamps. You will carve your own blocks using specialist tools, experiment with how to print onto paper and fabric and learn how to design a block to create continuous, interlocking patterns.



Date 3 to 5 May

Tutor Emilie Fairlie-Baker

Cost Residential: £390
Non-residential: £285
(incl. materials)

Course code C2605EFB



MEADOWS AND WOODLANDS

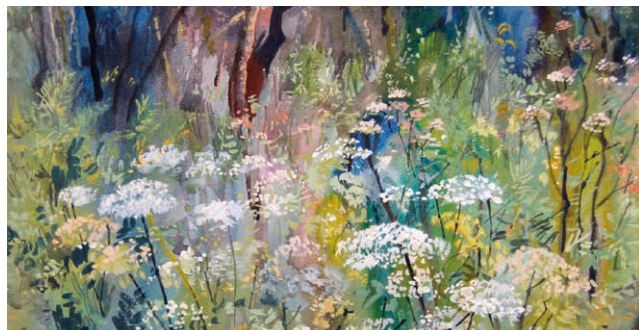
Explore the magic of woodlands and meadows at this time of year as these rich areas have been transformed from winter to the spring. We will look at painting light in forests, capturing magic carpets of bluebells and the rich tapestries of woodland edges and meadow landscapes. Most suitable for water-based paint, acrylic watercolour and gouache, although the principles also apply to oil painters. Frances will give advice to both beginners and advanced students and suggest ways to improve or enrich your work. Discuss and experiment with format and colour balancing to add mood and drama for atmospheric effect.

Date 3 to 7 May

Tutor Frances Winder

Cost Residential: £605
Non-residential: £395

Course code A2605FW



GEOLOGY OF THE LAKES: AN INTRODUCTION

Have you ever wondered why the topography and geology of the Lake District and wider Cumbria area varies so much? Find out why when you travel through 500 million years of geological history on this course. There will be stories of ancient oceans, volcanoes, Himalayan-scale mountain ranges, tropical seas and swamps, deserts and ice ages. The course includes field trips with a fair amount of walking – please wear appropriate walking boots and warm, waterproof clothes!

Date 5 to 8 May

Tutor Dr. Annette McGrath

Cost Residential: £545
Non-residential: £385
(incl. field trip)

Course code N2605AM



RAMBLES WITH SKETCHBOOKS

Pack up your pencils and sketchbooks for a few days of drawing and walking in the beautiful countryside around Higham. We will set a leisurely pace with gentle walks allowing plenty of time to tune into the experience of being in the landscape and try different ways to translate this into a rich visual record of our rambles. We will use our sketchbooks to explore

- different materials and techniques
- working at speed or slowing down, shifting focus and playing with scale, texture, perspective and composition
- channelling energy and a sense of place
- thinking about weather, light, space
- how to relax and enjoy the process and not worry about results

Date 5 to 8 May

Tutor Colette Cameron

Cost Residential: £535
Non-residential: £375
(incl. field trips)

Course code A2605CC



IF YOU CAN DOODLE, YOU CAN DRAW

There is one type of drawing that virtually everyone does and that is doodling. It's fun, mindful and entertaining. Many find it helps them think and absorb information in meetings. In the last few years several professional artists have taken a fresh look at doodle drawing, no longer seeing it as frivolous and throw away. It is seen as a valid art form that can be helpful for bringing out creative ideas. Jason has incorporated aspects of doodling into his own work for years. So, whether you are a total beginner looking for a fun, playful way to get into drawing and painting, or you are an artist with a little experience who would like to tap into their more playful creative side, then this course is for you.

Date 7 to 10 May

Tutor Jason Skill

Cost Residential: £505
Non-residential: £345

Course code A2605JS



A WEEKEND FOR FLUTES WITH PIANO

A relaxed weekend of flute playing for players at Grade 3 and above to build confidence and improve performing skills. Ask questions about tone and technique; play in a flute ensemble and have the chance to play your favourite pieces with piano accompaniment (bring along a piece for flute and piano that you know well for this session). We end with an informal concert just between ourselves.

Date 8 to 10 May

Tutor Rachel Holt with Jill Fogden (piano)

Cost Residential: £415
Non-residential: £310

Course code M2605RH



VISITING LAKELAND GARDENS

Join expert horticulturalist Louise on an intimate tour of Lake District gardens, including some not normally open to the public. Meet the gardeners, discover new plants and garden design inspiration behind the gates, walls and clipped hedges of some hidden horticultural gems of the Lake District.

Date 8 to 11 May



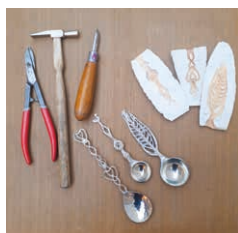
Tutor Louise Stoddart

Cost Residential: £545
Non-residential: £385
(incl. field trips)

Course code N2605LS

PEWTER SPOON-MAKING

Join new tutor Ella to make a pewter spoon using traditional pewtersmithing techniques. A course jam-packed with skills including hammers to form a spoon bowl from a flat sheet of pewter, casting a handle using molten pewter, soldering, polishing and finishing. Ella will guide you from design to finished spoon with step-by-step instructions and demonstrations. Suitable for beginners or those with previous pewter/metalwork experience.



Date 10 to 12 May



Tutor Ella McIntosh

Cost Residential: £420
Non-residential: £290
(incl. materials)

Course code C2605EM



GET WEAVING!

Explore the use of colour and texture. Dress a loom. Understand how to read pattern draft. Suitable for both absolute beginners and developing weavers.

Date 10 to 13 May



Tutor Jan Beadle

Cost Residential: £505
Non-residential: £345
(yarns available to purchase from tutor at additional cost c.£15)

Course code C2605JB

SILVER JEWELLERY - PENDANTS, BANGLES AND EARRINGS

During this course students will create three beautiful pieces of designer jewellery – a pendant, earrings and a bangle, using both silver sheet and wire. Techniques include saw piercing, filing, roll printing/texturing, wire forming, soldering, riveting and finishing. This course is suitable for beginners and intermediate students. Rebecca will bring three designs to work from, but ideas can be flexible. Students should have reasonable manual dexterity as they will learn how to use hand tools such as saws, hammers & soldering torches.

Date 12 to 15 May



Tutor Rebecca Halstead

Cost Residential: £505
Non-residential: £345
(additional charge for materials c.£55 to be paid to tutor)

Course code C2605RH

TIME TO WRITE

A creative retreat in the idyllic surroundings of the Lake District which has been an inspiration to generations of writers. Whether you're a beginner needing help to put your ideas on paper, or an author longing for a peaceful space, constructive feedback and the company of other writers, this is for you. There will be workshops, discussions, time to write and explore the landscape, as well as one-to-one sessions, guided by an experienced, well-published author and creative writing tutor.

Date 12 to 15 May



Tutor Kathleen Jones

Cost Residential: £505
Non-residential: £345

Course code L2605KJ



Date 13 to 15 May



Tutor Karen Quickfall

Cost Residential: £365
Non-residential: £260

Course code C2605KQ1

RUSKIN LACE

Ruskin Lace originated as a cottage industry in the Lake District in the 1880s. Karen, a leading expert and author on Ruskin Lace, brings extensive knowledge to support and guide you whether it is your first encounter with this heritage craft or you are already addicted! You will work on linen fabric using a combination of drawn thread and cut linen work, with the distinctive geometric designs created using needlelace techniques specific to this type of lace. Karen will run two courses (identical content) back to back. These courses are suitable for both beginner and experienced needleworkers. If required, a starter pack (£15) is available to purchase from the tutor.

Date 15 to 17 May



Tutor Karen Quickfall

Cost Residential: £365
Non-residential: £260

Course code C2605KQ2

ART HISTORY STUDY DAY: NOW YOU SEE ME...

The second in our series of study days exploring concepts and ideas that shape the world we live through the lens of art history. In this day course, we will explore visibility and invisibility in art. What are we shown, and what can't we see? Who tells the stories? Whose stories are told? Why? Join us as we explore the gaps and absences in art and visual culture, from history paintings to museum collections, the Western canon to media algorithms. Friendly and engaging, these sessions are all about broadening knowledge, being curious and exploring different ways of seeing life through art.

Date 14 May
10am to 4pm



Tutor Alison Critchlow & Dr Lizzie Fisher

Cost £115 includes lunch

Course code D2605AC

SCIENCE FICTION ON FILM TO 1970

We will explore together the history of science fiction on film from the earliest days of cinema tricks to the dawn of the modern blockbuster. The essential question science fiction asks is 'What would a world with different technology to the present day look like?'. Such speculative fictions overlap with a huge range of other genres, and we will adopt an inclusive approach without getting too bogged down in monsters, space, or monsters in or from space. We will use clips and discussion to cover silent-era SF, US SF in the 'space race' era, and the 1960s discovery of 'inner space'. There will be a nod to mad scientists and monsters along the way, too! The course will also include viewings of three full length features drawn from the period between the beginning of the sound era and the first humans walking on the moon.

Date 15 to 17 May



Tutor Dr Stephen Longstaffe

Cost Residential: £365
Non-residential: £260

Course code L2605SL

ANCIENT EGYPTIAN BODIES IN ART

The ancient Egyptians are almost immediately recognisable from their many depictions and the human body features prominently in Ancient Egyptian art. This course examines evidence for painting, sculpture and relief to show changing fashions of representing the body over time – in art and in hieroglyphic writing. How reliable are these as a guide to what people looked like? What associations did each body part have in Egyptian thinking?

Date 15 to 17 May



Tutor Dr. Campbell Price

Cost Residential: £365
Non-residential: £260

Course code H2605CP

BASSOONS WITH LAURENCE PERKINS

A wonderful chance for professional guidance, support and inspiration to make your bassoon playing easier and more enjoyable - and a chance to play fabulous bassoon ensemble music. Bassoonists of all playing levels are welcome (smaller ensembles will be in graded groups). Catriona McDermid will be joining us again with her inspirational tutoring and playing. We also welcome the wonderful concert pianist Yoshiko Endo for part of the week. We will be exploring numerous aspects of technique, orchestral excerpts, and solo works with the option (if you wish) to take part in an informal performance class with piano. All applications to be made initially through Laurence to ascertain ensemble line-up: <https://laurenceperkins.com/bassoon>

We can pick up at 5pm from Penrith Rail Station (+£40) by prior arrangement on booking.



Date 17 to 21 May



Tutor Laurence Perkins with Catriona McDermid and Yoshiko Endo

Cost Residential: £780
Non-residential: £580

Course code M2605LP

BOOKBINDING: RESTORATION

Most books deteriorate over time and so book conservators had to develop skills in restoring them. On this course you will learn the basics of book repairs using a variety of cloths, papers, and adhesives. You will learn how to: deconstruct a book in a safe and systematic fashion, repair both individual pages and sections, prepare your book should it require resewing, replace the end papers, undertake various techniques of preparation to the cover in order to allow new material to be added. Please bring with you 3-4 books in need of some TLC. The course is suitable for all levels of expertise. If you wanted to make a book from new, Doug would be happy to help you with this too but please bring the paper with you for this.

Date 17 to 21 May



Tutor Doug Mitchell

Cost Residential: £605
Non-residential: £395
(materials available to purchase from tutor at cost)

Course code C2605DM

PATCHWORK: HUNTER'S STAR

Hunter's Star can be a tricky block to make due to the bias-cut edges. There are several different ways to make it, but this course takes a straightforward approach which everyone can use to achieve success. Use two contrasting colours or more to get the result you prefer. Pre-cuts (layer cakes) or meterage can be used. Suitable for all abilities.



Date 21 to 24 May



Tutor Lis Binns

Cost Residential: £505
Non-residential: £345

Course code C2605LB

CREATIVE LEATHERWORKING FOR BOOKBINDERS

Using natural (undyed) and tannery-dyed leathers, students will learn how to apply a wide range of decorative finishes and textures to a leather surface, including: craquele, printed resist, transfer print, dyeing and colouring. The completed leather samples will then be used to cover a millboard plaquette with lined doublure which can then be used to further work the leather surface using inlaid and onlaid decorative elements. Although these techniques are of particular use to bookbinders they can also be applied to a wide range of related leather crafts.

Date 21 to 24 May



Tutor Tom McEwan

Cost Residential: £505
Non-residential: £345

Course code C2605TM



BEGINNERS AND IMPROVERS UKULELE

The course will cater for beginners (starting from scratch, learning together with fun and accessible rock and pop songs) and anyone who has already got to grips with the basic chords and would like to improve and develop their skills with new chords, alternative fingerings and tablature.

Date 22 to 25 May



Tutor Richard Sabey & Jennifer Pugh

Cost Residential: £545
Non-residential: £375

Course code M2605RS

INSPIRED BY THE SCOTTISH COLOURISTS

A colourful and inspiring course focusing on methods and ideas employed by the Scottish Colourists. Work with your own subject matter or the varied items supplied. Through close looking and learning from the work of great artists, you can improve your own painting practice.



Date 24 to 26 May

Tutor Ceri Allen

Cost Residential: £365
Non-residential: £260

Course code A2605CA



SKETCHING AND PAINTING THE GREAT OUTDOORS

Explore the varied and wonderful landscapes of the northern Lake District from stream and riverbank to lakeside fell by way of woodland through plein-air sketching and studio painting. Lionel aims to help you develop more powerful ways to express your feelings about the outdoor world, seen from afar or close-up, using traditional drawing and painting media using demonstrations of technique on location and methods and philosophies of artistic design in studio painting.

Date 24 to 28 May

Tutor Lionel Playford

Cost Residential: £645
Non-residential: £435
(incl. field trips)

Course code A2605LP



LIFE DRAWING

This course provides an opportunity for learners of all abilities to develop their techniques by drawing direct from a life model. Life drawing is a traditional skill that increases accuracy within observational drawing and feeds into all areas of art practice. You will explore drawing techniques that develop both mark making and measuring skills. You will be encouraged to step out of your comfort zones and supported with individually-tailored guidance from an award-winning portrait artist. This course is ideal for both beginners and practiced artists. A life model will be present throughout.

Date 26 to 29 May

Tutor Catherine MacDiarmid

Cost Residential: £595
Non-residential: £425

Course code A2605CM



EXPRESSIVE SKETCHBOOKS

A sketchbook is a place to experiment, try ideas out, record, analyse, remember and play. We will be looking at different ways of preparing pages for dynamic and eloquent 'art journaling' with techniques such as using the beauty of negative painting, construction/deconstruction, collage and other layering techniques.



Date 26 to 29 May

Tutor Alex Jakob-Whitworth

Cost Residential: £505
Non-residential: £345

Course code A2605AJW



EXPRESSIVE SEMI-ABSTRACT SEASCAPES IN MIXED MEDIA

Explore lots of creative and expressive art techniques in a really exciting and gently challenging way! Robert will teach you how to engage with your subject with greater depth, meaning and feeling. This course is for students who are willing to let go of restrictive inhibitions, habits and assumptions in order to allow more emotional expression in their paintings rather than recreate exactly what is in front of them. Students who attend this course must be willing to push their own creative boundaries and to try new approaches to how they currently paint.

Date 28 to 31 May

Tutor Robert Dutton

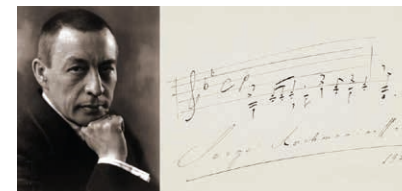
Cost Residential: £540
Non-residential: £370

Course code A2605RD



RACHMANINOV

Sergey Rachmaninov (1873-1943) was one of the last and greatest Romantic composers. His music became the blueprint for many film soundtracks, and his life story is worthy of a film. From the disastrous premiere of his 1st symphony, through the upheaval of the 1917 Revolution, to his final years in Beverley Hills, this course will uncover his remarkable life and beautiful music.



Date 29 to 31 May

Tutor Chris Rodwell

Cost Residential: £365
Non-residential: £260

Course code M2605CR



EARLY SUMMER COLOUR: BOTANICAL ART USING COLOURED PENCIL

At this time of year we see a fantastic burst of colour - the opening act for the summer ahead. The bright hues of peonies, rose buds, irises and early flowering fuchsia are complimented by the vivid greens of lush new growth. Learn how to layer colour pencil to create vibrant and realistic botanical illustrations. You will receive guidance and demonstrations to develop techniques and have the opportunity to experiment with equipment as we observe the glory of nature together. This course is suitable for beginners and those with some experience with coloured pencils.



Date 29 May to 1 Jun

Tutor Caroline Buckley

Cost Residential: £505
Non-residential: £345

Course code A2605CB



SUNDAY LECTURE: THE HOME FRONT IN CUMBRIA DURING WWI

Looking specifically at the military role of Cumbria, this lecture will examine the impact of WWI, which began as a small conflict and became a national effort involving the whole population. It will cover various aspects such as the Border Regiment and other local military units; recruiting; local industries and their contribution to the war effort, especially munitions; railways, transport and logistics; agriculture, food production and rationing; the role of women in all aspects of war work; local and Red Cross convalescent hospitals; prisoners-of-war; media coverage; local casualties and, of course, remembrance.

Date 31 May
2 to 4pm



Tutor Stuart Eastwood

Cost £10 including refreshments

Course code D2605SE

LAKELAND BIRDS

Magnificent scree-covered slopes, tranquil lakes, hanging oak woodlands and dramatic sea cliffs are just a few of the varied habitats we will be exploring on this five-day course. We will take short local trips to sample the best of Cumbria's summer birdlife, including Wheatears, Ring Ouzels, Redstarts, Dippers, Pied Flycatchers Wood Warblers and Ospreys to name a few plus, of course, the unforgettable 'sea-bird city' at St Bees Head. Although most birds are busy with parental duties, many are still singing and we will be spending time identifying by both sight and sound. Most days will involve a fair amount of walking.



Date 31 May to
9am 5 Jun



Tutor Keith Offord

Cost Residential: £740
Non-residential: £450
(incl. field trips)

Course code N2605KO

TORCH-FIRED ENAMEL BEADS

Make your own enamel beads then create beautiful jewellery from them under the expert guidance of Sharon Ford, leading enameller and restorer in enamels and gilding. Enamelling involves the fusion of jeweller's quality vitreous enamel with copper and silver through firing. When heat is applied, the enamels soften and flow, and the varying presence of different components creates a spectacular range of visual effects so that every bead created is unique. Experiment with different effects and colours for exciting necklace and earrings, or an unusual pendant. Thread your beads professionally, using a variety of findings. Inspirational and fun for both existing beaders and newbies. All materials are supplied at cost from the tutor.

Date 1 to 5 Jun



Tutor Sharon Ford

Cost Residential: £630
Non-residential: £420 (incl. first bottle of MAPgas)

Course code C2606SF1

GLORIOUS GREENS: BOTANICAL ART USING COLOURED PENCIL

The start of June signals the start of summer, the woodland canopy is at its freshest and fullest, a lush green mosaic. Learn how to illustrate convincing, realistic individual leaves. You will be given guidance and demonstrations to understand how to create the 'right green', illustrate leaf margins, veins, shape and form as well as how to tackle shiny and variegated leaves such as houseplants. You might produce a beautiful illustration of a single leaf or a design, utilising an array of complimentary foliage, or even tackle a leaf skeleton! This course is suitable for beginners and those with some experience with coloured pencils.

Date 1 to 5 Jun



Tutor Caroline Buckley

Cost Residential: £605
Non-residential: £395

Course code A2606CB

WATERLOO ASSOCIATION WEEKEND

The French Revolution, the rise of Napoleon; and the worldwide conflict that ensued, retains a deep fascination to this day. In keeping with the global nature of the war we will travel this weekend to India, Egypt, and Italy, as well as the more familiar territory of the Iberian Peninsula, and of course Waterloo. We examine one of the Royal Navy's most famous victories at the battle of the Nile, which dealt a fatal blow to Napoleon's ambitions in the East. We take a look at Sir Arthur Wellesley's first great victory at the battle of Assaye, which he later described as his finest accomplishment on the battlefield. On the 220th anniversary of the battle of Maida we investigate this largely forgotten campaign which provided a morale boost to British arms. In the Peninsula, we make a detailed analysis of the close fought battle of Fuentes de Onoro, where Wellington later declared that 'If Boney had been there, we should have been beaten.' The siege of Burgos was described by Wellington as his 'worst scrape' and we will scrutinize the reasons behind this rare failure. Waterloo is the subject of two talks: the first will look at the difficulties encountered by the Prussians on the march from Wavre to Waterloo, followed by an account of the desperate struggle for the village of Plancenoit.

Organised in co-operation with The Waterloo Association (waterlooassociation.org.uk)

Date 5 to 7 Jun



Tutor Andrew W Field, John Morewood, Mark Thompson and Nigel Hope

Cost Residential: £335
Non-residential: £220

Course code H2606WA



SHADOWS AND REFLECTIONS

Shadows and reflections can add so much more interest, colour and depth to our paintings. With inspiration from masters of shadow as diverse as Hammershoi, Morandi and Warhol, we will create shadows and study reflected light in still life set-ups and the interior space of the studio. We will explore the emotional tenor of dark spaces working both in drawing and painting.

Date 7 to 9 Jun



Tutor Ceri Allen

Cost Residential: £365
Non-residential: £260

Course code A2606CA

RUSSIAN TRIO - SUITES AND CONCERTOS

Suites from Prokofiev's Romeo and Juliet, Khachaturian's Spartacus and Shostakovich's Gadfly will be the focus of our attention. We will also listen to concertos by each of the three composers including Shostakovich's 2nd piano concerto, with its popular slow movement.



Date 7 to 9 Jun



Tutor Ian France

Cost Residential: £365
Non-residential: £260

Course code M2606IF

COLLAGRAPHS AND MONO-PRINTS

Collagraph printmaking can be very experimental and is full of surprises; the same can be said of mono-printing, so when the two techniques are combined it is double the fun! We start by creating collagraph plates from a mixture of everyday materials, creating a basic structure with texture, line and tone that runs through a whole series of prints. We will then create a series of unique monoprints by applying coloured inks with a looser, painterly approach and varying the effects to alter the mood and timbre of each print. During the course there will be plenty of opportunities for creative experimentation, sharing ideas and inspiration with other students whilst learning new skills and exploring fresh approaches to printmaking. Suitable for beginners as well as those with some experience.

Date 9 to 12 Jun

Tutor Emily Harvey

Cost Residential: £520

Non-residential: £360

Course code C2606EH



PHILOSOPHY AND FILM

In this course, we explore themes of mortality, memory, and identity through four significant films. We begin with Ikiru, where a bureaucrat seeks meaning in his final days, paired with The Seventh Seal, a meditation on faith and existential dread. We then examine Eternal Sunshine of the Spotless Mind, which questions how memories shape identity, and Inception, exploring the boundaries between dreams and reality. Join us to reflect on life's essential questions through cinematic art.

Date 9 to 12 Jun

Tutor Darren Harper

Cost Residential: £505

Non-residential: £345

Course code L2606DH



RUSKIN LACE

Ruskin Lace originated as a cottage industry in the Lake District in the 1880s. Karen, a leading expert and author on Ruskin Lace, brings extensive knowledge to support and guide you whether it is your first encounter with this heritage craft or you are already addicted! You will work on linen fabric using a combination of drawn thread and cut linen work, with the distinctive geometric designs created using needlelace techniques specific to this type of lace. This course is suitable for both beginner and experienced needleworkers. If required, a starter pack (£15) is available to purchase from the tutor.

Date 10 to 12 Jun

Tutor Karen Quickfall

Cost Residential: £365

Non-residential: £260

Course code C2606KQ



ART HISTORY STUDY DAY: ACTIVISM – OI YOU!

Join us for the third in our series of study days exploring concepts and ideas that shape the world we live in through the lens of art history. We will bring together artists from across the centuries to interrogate the relationship between art and politics and examine how artists have interpreted their role in society, expressed philosophical and ideological positions and interwoven creative practice with social responsibility. From political movements and manifestos to campaigning on climate crisis or human rights, we consider the efficacy and ethics of activism in art and the questions it raises. Friendly and engaging, these sessions are all about broadening knowledge, being curious and exploring different ways of seeing life through art.



Date 11 Jun

10am to 4pm

Tutor Alison Critchlow and Dr Lizzie Fisher

Cost £115 includes lunch

Course code D2606AC



TALK & TEA: A PHILOSOPHER'S GUIDE TO CHOICE

In this talk, we explore different philosophical perspectives on choice through the ideas of Sartre, Aristotle, and Zhuangzi. Sartre sees choice as radical freedom; Aristotle connects it to virtue and practical wisdom while Zhuangzi suggests that the best choices arise naturally, in harmony with life. We'll reflect on how these views shape our decision-making and explore how philosophy can help us understand and navigate the choices we face every day.

Date 12 Jun

2 to 4pm

Tutor Darren Harper

Cost £20pp or £35 for 2 including refreshments

Course code D2606DH



MIDSUMMER YOGA AND WALKING

A perfect mix of hatha yoga sessions (working on postures, breathing exercises and relaxation) and guided hill walks of up to 5 miles, sometimes over rough and steep ground (requiring a reasonable level of fitness) among the peaceful northern fells - which will leave you feeling supple, relaxed and refreshed! Suitable for beginners and experienced.

Date 14 to 18 Jun

Tutor Gill and Alan Hunter

Cost Residential: £715
Non-residential: £490 (incl. field trips)

Course code F2606GH



ENAMEL BOWLS LARGE AND SMALL

This course will focus on making fired enamel copper bowls of different sizes. While there will be a range of sizes available to work with, those who have not made an enamel bowl before will be encouraged to start with a small bowl. Those with some experience of making small enamel bowls will have the opportunity to move onto very large bowls. We will troubleshoot the challenges of working at this scale and experiment with enamel colours and techniques used in firing larger items to achieve captivating effects. Students will be encouraged to develop their own decorative styles and techniques, supported by Sharon's wide-ranging specialist knowledge and expertise. Please note this course is NOT for beginner enamellers. All materials available to purchase at cost from the tutor.



WATERCOLOURS WITH CONFIDENCE

Paint in a variety of settings, utilising the studio and Higham grounds. Enjoy demos, paint-alongs and painting en plein-air. You can bring your own reference materials, work from life or follow tutor-led demonstrations. Come along to develop skills and improve your confidence. For all levels.



SCULPTURAL NEEDLEFELT

Create a characterful sculpture, c.12-18 inches in size, using wool fibres based on a wire armature. There will be plenty of sources of inspiration and support to try one of a range of stylistic approaches, from art deco abstraction to stone-carved or caricature. Sympathetic, patient and knowledgeable guidance from an outstanding felt artist (www.furzie.co.uk). All welcome, no experience with textiles necessary.

Date 14 to 21 Jun



Tutor Sharon Ford

Cost Residential: £1,005
Non-residential: £595

Course code C2606SF2



Date 15 to 19 Jun



Tutor Jane Beech

Cost Residential: £605
Non-residential: £395

Course code A2606JB

Date 18 to 21 Jun



Tutor Furzie aka
Michelle Hickman

Cost Residential: £505
Non-residential: £345
(materials available to purchase from tutor)

Course code C2606MH

THE PHILOSOPHY OF CREATIVITY

No one can be told how to create, lest they cease to be creative. Creativity is also notoriously difficult to define; although many people have tried. So why should we philosophise about creativity? The main reason, as Jerome Bruner puts it is, "beyond practicality". It is "the ancient search of the humanist" for what makes human beings excellent. If, along the way, it introduces us to new ways of being creative, so much the better!



WRITING THE LIVES OF SAINTS: THE GOLDEN LEGEND AND ITS COUNTERPARTS

In Anglo-Saxon and medieval England, hagiography - the writing of the lives of saints - became a literary genre par excellence that emerged from a confluence of oral traditions, cultural practices and religious pilgrimage throughout Europe. Notable examples of this phenomenon include Mirk's Festial, Aelfric's Lives of Saints and The Golden Legend, a collection of 153 hagiographies that at the height of its popularity in the Middle Ages was more widely published than the Bible, and translated from Latin into almost every other European language. During this course we shall explore the incredible journey of the spoken word through manuscript to printed text.

SUMMER STRING ORCHESTRA

For pre-formed trios, quartets & quintets. Groups work together in the mornings at self-selected repertoire. Afternoons free to explore the beautiful surroundings. Remaining sessions for mixed ensembles. Large library of music to explore. A chance for experienced string players to work together at the wonderful chamber music repertoire. Preformed groups.

Date 19 to 21 Jun



Tutor Dr Alex Carter

Cost Residential: £365
Non-residential: £260

Course code L2606AC

Date 19 to 21 Jun



Tutor Dr. Sandra Elliott

Cost Residential: £365
Non-residential: £260

Course code H2606SE

Date 21 to 23 Jun



Tutor Louise Latham

Cost Residential: £330
Non-residential: £225

Course code M2606LL

CAPTURING MOVEMENT

Explore methods of illustrating movement, first in drawing form and then in watercolour. There are several painting and drawing approaches you can employ to capture the look of a form travelling at speed. These ideas will be explored, shown first in demonstrations and exercises. Once you have got to grips with the basic approaches, you will be encouraged to make your own movement drawings and paintings with tutor help and guidance.



Date 23 to 25 Jun



Tutor Jason Skill

Cost Residential: £365
Non-residential: £260

Course code A2606JS

AN INTRODUCTION TO TREES

Would you like to be able to identify and put a name to trees you encounter when out and about? If so this course will introduce you to features of trees that you need to be familiar with. Combining trips to tree collections which will involve level walking and indoor sessions where we will examine specimens and explore a range of native and exotic trees.



Date 23 to 26 Jun

Tutor Paul Nichol

Cost Residential: £535
Non-residential: £410
(incl. field trips)

Course code N2606PN



SUMMER QUILTER'S RETREAT: JAPANESE FOLDED PATCHWORK

Not to be confused with cathedral window, Japanese folded patchwork uses circles folded round squares. Traditionally done by hand although you can use a machine if you prefer. You

can add interest by using pieced fabric for the circles and/or the squares. Suitable for all abilities.

Date 23 to 27 Jun

Tutor Lis Binns

Cost Residential: £605
Non-residential: £395

Course code C2606LB1



PRINTMAKING: ETCHING

This course is suitable for beginners or those with previous experience. Using metal plates we will learn the fundamental elements of the etching process, with demonstrations and extensive technical support, culminating in your own set of limited edition prints. Beginners will learn how to prep the metal plates ready to etch them, how to draw and develop images and how to ink up the plates and print high quality finished etchings. For more advanced printmakers we will have time to explore techniques such as aquatint, chine-collé and relief etching.



Date 25 to 28 Jun

Tutor Jack Fawdry Tatham

Cost Residential: £530
Non-residential: £370
(incl. materials)

Course code C2606JFT



PATCHWORK: APPLIQUE FROM THE REVERSE

In the course we will be using a pre-printed panel. Adding a window frame and surround turns the panel into the view out of a window. You will have time to turn this into a wall hanging by quilting. Suitable for all abilities.

Date 27 to 30 Jun

Tutor Lis Binns

Cost Residential: £505
Non-residential: £345

Course code C2606LB2



HOW DO WILD PLANTS WORK?

Plants are fascinating living organisms which have evolved over hundreds of millions of years, having become crucial to all life on Earth. During this course we shall look at a wide range of plants including trees, shrubs, herbs, grasses, ferns and mosses. The course will include indoor sessions where we explore the amazing functions of plants such as how they obtain nutrients, grow and reproduce. We shall also look at the structures they have evolved such as leaves, roots, stems and flowers to help them carry out these functions.

Visits to a range of sites are included to look at wild plants in situ. Here we shall consider how their functions and structures are suited to the particular habitats in which we find them. We'll also share useful tips to help in the process of identifying species in the field.

Date 28 Jun to 1 Jul

Tutor Stuart Colgate

Cost Residential: £535
Non-residential: £375
(incl. field trips)

Course code N2606SC



TRADITIONAL STAINED GLASS

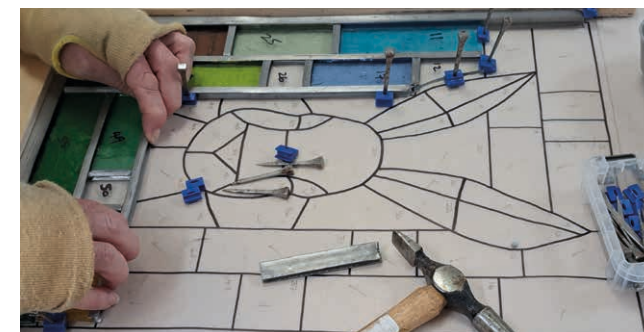
Design and make a traditional stained-glass panel using key skills that will enable you to construct more elaborate projects later. Learn about design principles before creating and preparing your pattern, decide which glass to use and how to cut it safely, become confident in the leading and soldering process then finally clean and polish your panel, ready to be displayed when you get home! No experience required - be guided in all aspects by local stained glass artist Nikki Clark. Returning students are welcome to bring their own designs to work on with Nikki's support; please contact Nikki in advance to discuss ideas and options. Contact details from office.

Date 28 Jun to 3 Jul

Tutor Nikki Clark

Cost Residential: £745
Non-residential: £465
(incl. materials)

Course code C2606NC



LEATHERWORK: QUALITY LEATHER BELT

Create your own leather made to measure belt using the traditional method of hand-stitching the saddle stitch. You will learn the finishing touches that make a quality belt. There will be a choice of various leathers and buckles to choose from to make your belt. You can personalise your belt, or if you prefer, a pair of coasters or a picture by hand-tooling designs. Materials provided.

Date 1 to 3 Jul

Tutor Roslyn Whiting

Cost Residential: £405
Non-residential: £300

Course code C2607RW





PAINTING BIRDS IN WATERCOLOURS

Learn how to paint birds one stage at a time, with individual help and step-by-step instructions. From puffins to kingfishers, by the end of the course you will be able to paint our feathered friends with confidence.

Date 1 to 3 Jul

Tutor Jane Beech

Cost Residential: £365
Non-residential: £260

Course code A2607JB1



SUMMER YOGA RETREAT

These weekends are an opportunity to take time for ourselves in a peaceful environment and to look at the value of yoga in our everyday lives. We explore the accessible approach to yoga within viniyoga as developed by Sri TKV Desikachar, which is easily adapted to the individual's ability and needs. A theme will be developed via yoga practice – using postures linked to breath, sound and imagining in a meditative way. Sessions starting with reference to yoga philosophy and theory. Suitable for those at the beginning of their yoga journey and of value to experienced practitioners.

Date 3 to 5 Jul

Tutor Amanda Oakes

Cost Residential: £365
Non-residential: £260

Course code F2607AO



WATERCOLOUR LANDSCAPES FOR BEGINNERS

Learn how to paint a simple but effective landscape including skies, hills, trees, hedgerows and other landscape features. This is suitable for beginners and for intermediate level students who want to brush up their techniques. Step-by-step demonstrations and individual help given throughout. All materials provided.

Date 3 to 5 Jul

Tutor Jane Beech

Cost Residential: £385
Non-residential: £280 (incl. materials)

Course code A2607JB2



UPHOLSTERY

You will learn to strip a small item of furniture (e.g. a chair, stool, ottoman or headboard), tackle interior paddings and rebuild it using traditional or modern upholstery techniques as appropriate. You bring the item of furniture you want to restore and the fabric you would like to use; all the fillings, specialist tools, technical materials and expertise will be provided. In order to ensure your time is well spent, you must contact Cathy directly prior to your course to discuss your project needs. Contact details will be provided on booking.



Date 3 to 5 Jul

Tutor Cathy Newbery

Cost Residential: £365
Non-residential: £260

Course code C2607CN



NATIONAL MEADOWS DAY – SUMMER VERGE WALK

Volunteer event. Join us for a walk around the local verges close to Higham to look for plants and flowers that would once have been present in the fields around us. Road verges are home to almost half of the UK's wildflower species and often contain remnants of once widespread flowers found in meadows and farmland long since lost. Learn something about the local landscape and help us with our meadow restoration project.

Date 4 Jul
2 to 4pm

Tutor Head Gardener
Sean Hannah & Dr Lizzie Fisher

Cost FREE

Course code D2607MD



WIND SERENADES SUMMER SCHOOL

Wind chamber music course for high-advanced amateur players (diploma-standard level 1 minimum) to work in-depth on substantial original repertoire with the highest level of tuition. All works studied will be performed complete in a special concert on the last day. The course includes a mid-week tutors' concert. All applications to be made initially through Laurence to ascertain ensemble line-up: www.laurenceperkins.com/wind-serenades

We can pick-up at 4:30pm from Penrith Rail Station (+£40) by prior arrangement on paying balance.

Date 5 to 9am 12 Jul

Tutor Laurence Perkins with Philippa Davies, Colin Honour, Jan Willem Nelleke

Cost Residential: £930
Non-residential: £680

Course code M2607LP



INTRODUCTION TO UPHOLSTERY

Learn to strip a small item of furniture (e.g. a drop in dining seat or dining chair, stool), tackle interior paddings and rebuild it using traditional or modern upholstery techniques as appropriate. You bring the item of furniture you want to restore and the fabric you would like to use; all the fillings, specialist tools, technical materials and expertise will be provided. In order to ensure your time is well spent, you must contact Cathy directly prior to your course to discuss your project needs. Contact details will be provided on booking.

Date 6 Jul
10am to 4pm

Tutor Cathy Newbery

Cost £105 including lunch

Course code D2607CN





HIGHAM HALL OPEN DAY

SATURDAY 11th JULY 10AM - 3PM

**FREE
ENTRY**



We are throwing open our doors to celebrate 50 years of adult education at Higham. Drop in between 10am & 3pm for:

- House and garden tours
- Tutor-led demonstrations
- History of Higham exhibition
- Family activities for younger visitors
- Special outdoor Wind Serenades concert 2pm
- Light homemade lunches, teas, coffee and homemade cakes available to purchase



For more
information,
please scan
this QR code



A VERY SPECIAL WOODWIND RECITAL

A memorable hour of chamber music performed by internationally-renowned tutors of the Wind Serenades course in the intimate setting of our wonderful oak-floored lecture room for a superior acoustic experience. Bar open before and afterwards.

Date 9 Jul
recital starts 8pm



Musicians Laurence Perkins (bassoon), Philippa Davies (flute), Colin Honour (clarinet), Jan Willem Nelleke (piano)

Cost £10 All proceeds towards the Higham building appeal.

Course code D2607LP

LONG STORY SHORT: READING ADVENTURES IN SHORT FORM WRITING

An immersive opportunity to explore some shorter form stories and other tales, focusing on the sometimes subversive, often comic, aspects of the darker side of experience. Looking at writers from Sylvia Townsend Warner to Alison Lurie by way of fairy tales, Colm Toibin and Hilary Mantel, we'll share close readings of texts and discover how what we find there sparks our imaginations. Let's see how one thing leads to another - from age-old preoccupations to current concerns.



Date 12 to 14 Jul

Tutor Susan Allen

Cost Residential: £365
Non-residential: £260

Course code L2607SA



ADVANCED BOOKBINDING: A QUARTER LEATHER BINDING MODEL

Making books covered in leather is always a challenging but most satisfying thing to do, no matter how many times you do it. We will be making a 19th century smooth spine, quarter-bound book in goatskin leather with decorative paper sidings. We will be making endpapers and hand sewing the text-block, taking the book through the construction stages, board attachment, leather preparation and forwarding. Materials available to purchase at cost from tutor.



Date 12 to 15 Jul

Tutor Doug Mitchell

Cost Residential: £505
Non-residential: £345

Course code C2607DM1



VISITING LAKELAND GARDENS

Join expert horticulturalist Louise on an intimate tour of Lake District gardens, including some not normally open to the public. Meet the gardeners, discover new plants and garden design inspiration behind the gates, walls and clipped hedges of some hidden horticultural gems of the Lake District.



Date 12 to 15 Jul

Tutor Louise Stoddart

Cost Residential: £545
Non-residential: £385 (incl. field trips)

Course code N2607LS



WWII ON THE SOLWAY

This course brings together wide-ranging WWII expertise from military historian John Sadler and local historian Fiona Stoddart's extensive knowledge of this region. It features a bumper itinerary of visits to WWII-related sites around the Solway to explore the wide-ranging impact of the war on the lives, landscape and communities in and around the Solway. An important military hub for logistics, training and defence; the scale of the war effort in this region left many visible traces, from remnants of military infrastructure across the landscape and significant demographic shifts in the population. Field trips will be complimented by lecture sessions with a chance to study and 'try out' WWII uniform, field gear, weapons and kit.

Date 14 to 17 Jul



Tutor John Sadler and Fiona Stoddart

Cost Residential: £555
Non-residential: £395
(incl. field trips)

Course code H2607FS



BOOKBINDING: BEGINNERS

An introduction to the basics of hand bookbinding using techniques that have hardly changed in centuries. See how paper is prepared then hand sewn into a single-section pamphlet and a multi-section book. Learn how to prepare the book for covering, using traditional methods with modern materials. Gain experience and insight into book construction and how to use materials to their best advantage. End up with two lovely books to take home!

Date 15 to 17 Jul



Tutor Doug Mitchell

Cost Residential: £365
Non-residential: £260

Course code C2607DM2



BLOW! INTERMEDIATE WOODWIND

Grades 4 to 6 Flute, Oboe, Clarinet and Bassoon welcome. Small and larger group playing under patient, professional instruction. A great way to enjoy and develop your playing! Notify us of instrument when booking.

Date 15 to 17 Jul



Tutor Catriona Melville-Mason

Cost Residential: £365
Non-residential: £260

Course code M2607MM

HARPS NORTH WEST SUMMER FESTIVAL

Our eighth summer festival will open with a tutors' concert on the Friday evening. This course is for players at all levels, except absolute beginners. Expect to learn new tunes, improve your playing skills and technique all in the delightful surroundings of Higham Hall. There is plenty of fun to be had with a festival dinner and party on Saturday evening, followed by a session with harp tutor and HNW convenor, Susan Lambert. Harps of all shapes and sizes are welcome. However harps with less than 34 strings may need to adapt the music to suit their harp. Mark Sharp, harp technician, will be on site, ready and willing to service your harp.

Date 17 to 19 Jul



Tutor Mary Dunsford, Corrina Hewat and Ailie Robertson

Cost Residential: £380
Non-residential: £275

Course code M2607HNW

CIRCLE DANCE RETREAT

Both newcomers and experienced are welcome to join this inclusive form of community dancing where no partners are required, although some previous dance experience would be helpful. Music and dances are drawn from cultures and countries around the world, and pace varies from lively to meditative. A tonic for body and mind.

Date 19 to 22 Jul



Tutor Anne-Lise Kryger

Cost Residential: £505
Non-residential: £345

Course code M2607AK



PAINTING THE SEA

Cumbria's west coast has a wide variety of shoreline subjects for the painter, from dramatic cliffs to sandy/pebbly beaches and tidal estuaries. Join landscape painter Lionel Playford to sharpen up your skills sketching and painting en plein air and learn some

useful techniques to capture the look and feeling of place, then develop your sketches into a finished painting back in the studio.

Date 19 to 24 Jul



Tutor Lionel Playford

Cost Residential: £775
Non-residential: £495
(incl. field trips)

Course code A2607LP

WILLIAM MORRIS'S 'STRAWBERRY THIEF' - SURFACE STITCHING

For Nicola's first course at Higham, William Morris's iconic 'Strawberry Thief' thrush has been re-imagined in a beautiful springtime colour palette and worked in a range of surface stitch techniques. This project, which includes buttonhole stitch and variations, knots and various loop stitches ornamented with whipping and seeding stitches. Over-dyed DMC stranded cottons and C21st yarns are worked on a cotton ground with additional beads, sequins and metallic threads for a shimmering effect.



Date 19 to 22 Jul



Tutor Nicola Jarvis

Cost Residential: £550
Non-residential: £390
(incl. kit)

Course code C2607NJ



CAV, PAG AND VERISMO

Truth, low-life or realism is how many interpret the raw and passionate stories about ordinary people, often involving violence and tragedy, associated with the Verismo movement in 1890's Italian opera. Cavalleria Rusticana and I Pagliacci are the most famous examples; we

will also consider revolutionary Andrea Chenier and star actress Adriana Lecouvreur.

Date 22 to 24 Jul

Tutor Ian France

Cost Residential: £365
Non-residential: £260

Course code M2607IF



ANCIENT ROCKS OF LAKELAND

An advanced course for people with some geological knowledge, or those that have already attended our GEOLOGY OF THE LAKES: AN INTRODUCTION course. This course examines the oldest rocks in Lakeland: the early-mid Palaeozoic (of Ordovician to Devonian age). It includes several field trips to locations across the Lake District – please wear appropriate walking boots and warm, waterproof clothes!

Date 23 to 26 Jul

Tutor Dr. Annette McGrath

Cost Residential: £545
Non-residential: £385
(incl. field trips)

Course code N2607AM



APPRECIATING SHAKESPEARE IN PERFORMANCE: THE COMEDY OF ERRORS

Increasingly farcical confusion occurs when two pairs of identical twins, shipwrecked and separated as babies, end up many years later in the same town and are repeatedly mistaken for each other. Underneath the high-energy comedy, Shakespeare explores deeper issues of identity and loss.

This study weekend accompanies a production of the play by the Festival Players and includes a special Q&A with the director and cast of The Festival Players. Lectures and discussions in the surrounding sessions add context and depth.

Date 24 to 26 Jul

Tutor Clare Smout

Cost Residential: £390
Non-residential: £285
(includes performance)

Course code L2607CS



PHULKARIS: HAND EMBROIDERIES FROM PUNJAB, INDIA

This new course will introduce learners to the culture, history and craft of Phulkari embroideries. This multi-media art involves drawing, woodblock printing and hand embroidery using the 'Phulkari' stitch. With guidance from artist Saima Kaur, by the end of the course you will have designed and created your own Phulkari-inspired hand embroidery. Materials provided.



Date 24 to 26 Jul

Tutor Saima Kaur

Cost Residential: £375
Non-residential: £270

Course code C2607SK



SHAKESPEARE IN THE GARDEN: THE COMEDY OF ERRORS

The Festival Players return for their 23rd year, performing Shakespeare's high-energy comedy. Confusion occurs when two pairs of identical twins, shipwrecked and separated as babies, end up many years later in the same town and are repeatedly mistaken for each other. We are hoping for good weather, despite the title of the play, but the show will go on if we have to hand out umbrellas. Open 1.30 pm for picnics. Bring your own seating. Well-behaved dogs welcome. www.thefestivalplayers.co.uk

Date 25 July
3 to 5pm

Performers The Festival Players

Cost adults £20,
school children £15

Course code D2607FP



JAZZ PLAYERS' SUMMER SCHOOL FEATURING ALAN BARNES

A serious yet relaxed week for jazz musicians who are able to play and read music to rehearsal band standard. Play a range of material from swing to bebop in small groups under the expert guidance of three of the UK's best jazz musicians: David Black (course leader/saxophone/flute/piano) with Alan Barnes (saxophone/clarinet) and Mark Armstrong (trumpet).

All prospective players must contact David on 07951 903230/ daveblackmusic@hotmail.com before enrolling to ascertain instrument(s) and level.

Date 26 Jul to
9am 2 Aug

Tutors David Black,
Alan Barnes and Mark
Armstrong

Cost Residential: £1,025
Non-residential: £650

Course code M2607DB



JAZZ CONCERT

A lively and engaging evening of mainstream jazz with David Black and players from our residential jazz course joined by very special guests saxophonist Alan Barnes and trumpeter Mark Armstrong. Bar open from 7:30pm.



Date 1 Aug
8 to 11pm



Musicians David Black,
Alan Barnes, Mark
Armstrong and friends

Cost Tickets £15

Course code D2608DB

SCOTTISH BORDERS HISTORY

Minibus field trips exploring the rich and layered history of the English and Scottish borderlands. Journey through time visiting historic sites in the Scottish Borders, Dumfries and Galloway and Cumbria. Always a varied mix of heritage, lore and history with some famous (sometimes infamous) locals thrown in.

Date 2 to 5 Aug



Tutor Fiona Stoddart

Cost Residential: £555
Non-residential: £395
(incl. field trips)

Course code H2608FS

BOTANICAL ART USING COLOURED PENCILS: SUMMER FRUITS AND VEGETABLES

By observing and drawing directly from nature, enjoy exploring the varied forms and textures of the summer garden's edible harvest and learn how to build up their rich colours by blending and layering coloured pencils in the relaxing atmosphere of Higham Hall. The course is suitable for beginners and those with some experience with coloured pencils.



Date 2 to 7 Aug



Tutor Susan
Christopher-Coulson

Cost Residential: £725
Non-residential: £445

Course code A2608SCC

ARTIST LABORATORY

Over six days in the studio this mentored programme, centred on your own practice, will foster experimentation, enquiry and artistic development. With Steve's knowledgeable and considered support, and through individual and group discussions, you will be encouraged to respond open-mindedly to your own questions and ideas around your practice/discipline, conceptual approaches, and subject material.

Date 2 to 8 Aug
9am



Tutor Steve Humble

Cost Residential: £850
Non-residential: £495

Course code A2608SH

THE AXE FACTOR: EXPLORING NEOLITHIC STONE AXE PRODUCTION, EXCHANGE AND COMMUNICATION

Six thousand years ago, the Central Lake District was the focus of an intensive production process with a wide distribution network. A very particular type of stone, which outcropped around the highest fells, was much sought after by Neolithic communities. They quarried, shaped, and polished it to create valuable axe-heads that were traded throughout Britain and Ireland. Drawing on evidence from archaeology and ethnography, this course will explore some of the social aspects of this process, from the expeditions and possible rituals associated with stone extraction, to the reasons that this special material was so highly prized.

Date 5 to 7 Aug



Tutor Dr. Kate
Sharpe

Cost Residential: £390
Non-residential: £285
(incl. field trips)

Course code H2608KS

EARLY MUSIC SUMMER SCHOOL 2026

For competent singers, viol and recorder players, covering music c.1450-c.1650. Instruction in viol, lute and recorder playing plus choral/solo singing, vocal technique and various consorts. Plenary music-making sessions, lectures and opportunities to try something new (instrument or voice). A marvellously rich musical cocktail! With Deborah Catterall (Head Tutor, Vocal), Elizabeth Dodd (Viol, Renaissance Dance), Philip Gruar (Recorder), Richard MacKenzie (Lute) and Michael Piraner (Recorder).



Please contact course leader Deborah Catterall before completing application form to attend (deborah_catterall@yahoo.com / 07964 310 617). This is so Deborah can ensure the correct balance of singers and instruments for the summer school. For full details and application form see www.highamhall.com/emss

Date 8 to 14 Aug
9am



Tutors Deborah Catterall,
Elizabeth Dodd, Philip
Gruar, Richard MacKenzie,
Michael Piraner

Cost Residential: £850
Non-residential: £550

Course code M2608DC

CYANOTYPES

Spend a day discovering the historical printing process of cyanotype and make beautiful "blueprints" from natural forms, found objects and hand-drawn transparencies. You will learn about the history of the process, how to mix the solution to coat a variety of surfaces, prepare and print a large selection of paper to use as greetings cards or other creative projects and explore ways of mark making on transparent surfaces to make negatives. No previous artistic experience is necessary and everyone will achieve striking results to inspire further exploration.

Date 14 Aug
10am to 5pm



Tutor Kim Tillyer

Cost £110 including lunch

Course code D2608KT

LATE STARTERS' MINI-ORCHESTRA FOR WOODWIND & STRINGS

Enjoy making music with others in our late-starters mini orchestra, for instruments in the key of C (i.e. flute, oboe, bassoon and bowed strings. SORRY no clarinets or saxophones). Music will be arrangements of light classical and traditional pieces, with relatively straightforward parts in terms of key and note range. The weekend is aimed primarily at players of Grade 1 – 4 standard, although slightly more demanding music can be provided for anyone who would like a challenge. Whether you are new to playing with others, have recently dusted off an instrument that's been languishing in the attic, or are just looking for an opportunity to consolidate your skills in a friendly, supportive environment, why not join us?

Date 14 to 16 Aug



Tutor Catriona Melville-Mason

Cost Residential: £365
Non-residential: £260

Course code M2608MM



IN FULL COLOUR

A joyous colourful summer course exploring the challenges of working with colour. With inspiration from great colourists, the course includes demos, presentations and fun exercises exploring colour theory with practical insights and tips to try as you also work on your own project. There will be studio work and, if weather permits, opportunities to work outside in the beautiful grounds at Higham.

Date 14 to 17 Aug



Tutor Ceri Allen

Cost Residential: £505
Non-residential: £345

Course code A2608CA

GARDENING FOR WILDLIFE

On this new course, join experienced horticulturalist Louise Stoddart to learn how to work with plants and use nature-friendly gardening practices to enhance both the beauty and ecological value of your own outdoor space, from the smallest courtyard to larger plots. Discover which plants provide vital food sources across the seasons to encourage beneficial insects and pollinators such as bees and butterflies. Learn about different habitats and how to create these to support and shelter wildlife, including meadows and garden ponds. Take inspiration from an established garden that embraces biodiversity and supports wildlife through great design, plant choices and sustainable practices. To include illustrated talks, group discussion, practical demonstrations, workshops and a garden visit.

Date 14 to 17 Aug



Tutor Louise Stoddart

Cost Residential: £505
Non-residential: £345

Course code N2608LS

ACOUSTIC GUITAR

The course welcomes beginner and developing players. We will be looking at basic aspects such as posture, tuning, hand positions. We will be looking at learning and practice strategies around building your chord vocabulary, how to learn a song, how to learn a tune, left and right-hand techniques, elements of different genres, strumming and rhythm and fingerstyle. We will also look at theory and how it applies to the guitar. Each attendee receives plenty of one-to-one tuition and any type of acoustic guitar is welcome. The course is run in a supportive and no-pressure manner, with the aim to learn and enjoy.

Date 16 to 19 Aug



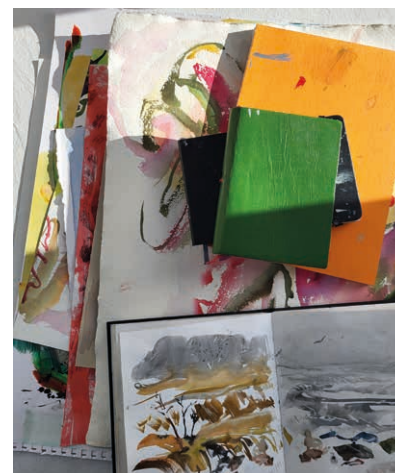
Tutor Jonny Flockton

Cost Residential: £505
Non-residential: £345

Course code M2608JF

PORTFOLIO DEVELOPMENT

A hands-on practical course for anyone thinking of applying to study art in further or higher education (university or college). We will build on your existing work to boost your portfolio – expanding your knowledge of processes and approaches to making art and building confidence in talking about your work and ideas. Expect a fun, experimental, high-energy approach alongside learning about contemporary artists working today. Bring your enthusiasm and curiosity to join in this supportive group taught by painter Alison Critchlow.



Are you eligible for a bursary or assisted place? see ADDITIONAL INFORMATION p56.

Date 17 to 20 Aug



Tutor Alison Critchlow

Cost Residential: £505
Non-residential: £345

Course code A2608AC

WOODCARVING: CREATIVE RELIEF CARVING

Relief carving is the process of cutting a pattern or design into a flat surface. For those new to the craft, Sharon will gently guide you through the process of transforming a block of wood into a unique image in relief with generous one-to-one support, technical instruction and extensive knowledge of her subject. Bring your own visual sources or use Sharon's books for inspiration. Learn to transfer a pattern, use chisels safely and try a range of carving techniques. For beginners and experienced woodworkers. Those who have attended previous courses may bring projects of their own to work on.

Date 17 to 23 Aug
9am



Tutor Sharon Littlely

Cost Residential: £850
Non-residential: £495

Course code C2608SL

ITALIAN LANGUAGE AND CULTURE IMMERSION RETREAT

Do you love Italy? Are you looking to improve your Italian conversation and immerse yourself in Italian culture? Join Antonella in her 2026 retreat at Higham. The retreat will balance structured group activities with plenty of free time to explore Italian film, literature and music. You will be encouraged and supported to build confidence and improve your Italian speaking skills through wide-ranging conversation and simple games. The retreat is designed to accommodate people who have a good understanding of written Italian but would like to develop their listening and conversational skills. If you are unsure if this event is appropriate for your level of competency with the language, please contact the tutor at info@reallanguageexperience.com

Date 19 to 21 Aug



Tutor Antonella Rea

Cost Residential: £365
Non-residential: £260

Course code L2608AR

FAST-FIRE KILN BUILDING

New! A practical, hands-on course in which you will learn to build and fire a small fast-fire wood kiln. Working as a team, participants will learn kiln design principles, material selection, and construction techniques before taking part in a full wood firing and kiln opening. The course covers both the technical and practical aspects of efficient wood firing, including firing strategy, maintenance, and how to adapt the design for future use. Suitable for potters and enthusiasts of all experience levels.



Date 20 to 24 Aug



Tutor Jack Smith

Cost Residential: £620
Non-residential: £400

Course code C2608JS

EIGHT GREAT MYTHS ABOUT THE LAKE DISTRICT



The poet Rilke once described fame as 'the sum of the misunderstandings that cluster around a name.' He was thinking of the sculptor Rodin, but his observation applies as much to places as to

people. In this weekend residential course, we will explore some of the misunderstandings that have gathered around one of England's most celebrated landscapes: the Lake District. Often imagined as a timeless refuge of wild nature – a place of refuge from modernity and a place of inspiration – the district is in fact much more complex. It is really about as 'natural' as Kew Gardens, and it bears the deep marks of Britain's imperial reach, its Industrial Revolution and even its Atomic Age. Over the weekend, we will consider how poetry, art and industry have shaped what we now call 'natural'. Through discussion and reading, we will reconsider what the Lake District is and what it has meant to Britain's past and present.

Date 21 to 23 Aug



Tutor Dr.
Christopher Donaldson

Cost Residential: £385
Non-residential: £280

Course code H2608CD



CHAMBER MUSIC SUMMER SCHOOL

For pre-formed trios, quartets & quintets. Groups work together in the mornings at self-selected repertoire.

Afternoons free to explore the beautiful surroundings.

Remaining sessions for mixed ensembles. Large library of music to explore. A chance for experienced string players to work together at the wonderful chamber music repertoire.



Date 24 to 28 Aug



Tutors Louise
Latham, Tamsin Symonds,
Stephen Threlfall and
Mary Dainton

Cost Residential: £690
Non-residential: £485

Course code M2608LL

SILVER JEWELLERY

During this course two projects will be created in sterling silver – using both sheet and wire, making a necklace and a pair of earrings. Techniques covered include saw piercing, texturing, filing, reticulation, soldering and finishing. Students will need reasonable manual dexterity, as they will be learning how to use hand tools and soldering torches.

Date 28 to 30 Aug



Tutors Rebecca
Halstead

Cost Residential: £385
Non-residential: £280

Course code C2608RH

DISCOVERING WATERCOLOURS

Have you ever wanted to paint with watercolours but don't know how? If so, this is the course for you. Come along and be guided with some simple tips to make the most of watercolours. Get used to colour mixing, composition and different ways of achieving effects in a simple way to produce watercolour paintings with confidence. Aimed at beginners or those who just want to brush up their techniques.

Date 28 to 30 Aug



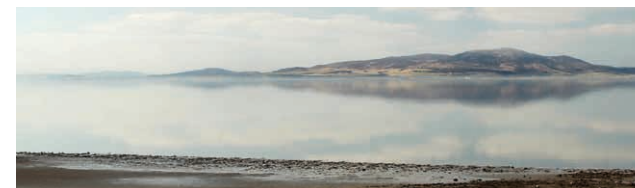
Tutors Jane Beech

Cost Residential: £385
Non-residential: £280

Course code A2608JB

SECRET SOLWAY

Uncover some of the rich local and natural history of the Solway Firth area. Head out in the minibus with expert guide Fiona Stoddart on curated tours taking in a variety of historic sites. Please note there will be some walking involved on low level footpaths and country lanes.



Date 28 to 30 Aug



Tutors Fiona
Stoddart

Cost Residential: £385
Non-residential: £280

Course code H2608FS2

RUSKIN LACE

Ruskin Lace originated as a cottage industry in the Lake District in the 1880s. Karen, a leading expert and author on Ruskin Lace, brings extensive knowledge to support and guide you whether it is your first encounter with this heritage craft or you are already addicted! You will work on linen fabric using a combination of drawn thread and cut linen work, with the distinctive geometric designs created using needlelace techniques specific to this type of lace. This course is suitable for both beginner and experienced needleworkers. If required, a starter pack (£15) is available to purchase from the tutor.

Date 30 Aug to 1
Sept



Tutor Karen Quickfall

Cost Residential: £365
Non-residential: £260

Course code C2608KQ



DISTINCTIVE FRENCH SYMPHONIES

Berlioz broke the mould with his *Symphonie Fantastique*, Bizet showed early promise with his symphony in

C. Cesar Franck's symphony moves from Gothic splendour to a lively finale and Saint-Saens's *Organ* symphony follows the four movement precedence with a loud, celebratory finale which is impossible to resist.

THE WAY WE WERE: HOW FILMS REFLECTED OUR LIVES

A look at the way British and American society changed between 1930 and 1980 as reflected in the feature films of the period.



ENAMELLING

Make enamelled jewellery, small tiles or panels working on copper, silver or steel. Learn the techniques of enamel application, foils, stencils, sgraffito among others as desired, and training in kiln use, control and safety. All abilities welcome from beginners to advanced; students will be supported to work at their own pace on appropriate projects. Materials available to purchase from tutor (£5-£20 dependent upon project).

BOTANICAL WATERCOLOUR PAINTING

Sculptural seed heads and glowing hedgerow fruits will inspire you to capture the fresh, warm palette and clean lines of autumn. Working direct from nature, learn to accurately depict them in watercolour with technical demonstrations, knowledgeable guidance and one-to-one tuition. For both beginners and the more experienced.

Date 30 Aug to 1 Sept



Tutor Ian France

Cost Residential: £365
Non-residential: £260

Course code M2608IF

Date 30 Aug to 1 Sept



Tutor Colin Shindler

Cost Residential: £365
Non-residential: £260

Course code L2608CS

Date 3 to 7 Sept



Tutor Sharon Ford

Cost Residential: £615
Non-residential: £405

Course code C2609SF

Date 3 to 6 Sept



Tutor Marion Wilson
SBA

Cost Residential: £505
Non-residential: £345

Course code A2609MW

ATKINSON GRIMSHAW: MASTER OF MOONLIGHT AND MUCH MORE

Grimshaw was one of the very few genuinely self-taught, working class artists to emerge during the most productive period of British art - the reign of Queen Victoria 1837-1901. Overcoming the discouragement of having his paints and brushes burned by his mother, and inspired by success of Pre-Raphaelitism, his own meticulous rendering of landscapes led to the development of what became his main subject – moonlit views. His range is, however, much wider than this and generally less well known. Following the story of his life in Leeds, Scarborough and briefly, London, this course will also examine the relationship between an artist and his public: a patron once demanding assurance that he “never painted on the Sabbath!”



FINLAND: ART AND IDENTITY

Ukraine's current struggle for self-determination in the face of Russian oppression has a historical precedent in that of Finland during the 'winter war' (1939-40) of World War II, when the Soviet Union invaded Finland, and the subsequent 'continuation war' (1941-44) which led to territorial concessions against overwhelming Soviet forces. A group of artists that deserve to be better known (there are no examples of their work in public collections in the UK) developed inspiring images of their homeland and people. Their work stirred national sentiment and promoted a strong sense of identity which bolstered Finnish resistance to Soviet pressure and proved critical to Finland's fight for independence and sovereignty. The life & art of Albert Edelfelt and the outstanding Akseli Gallen-Kallela will come as a revelation to most.



Date 3 to 5 Sept



Tutor Tim Stimson

Cost Residential: £365
Non-residential: £260

Course code A2609TS1

Date 6 to 8 Sept



Tutor Tim Stimson

Cost Residential: £365
Non-residential: £260

Course code A2609TS2

DRAMATIC SEASCAPES, SKIES AND LANDSCAPES IN SOFT PASTEL

Extend your artistic skills to create dramatic seascapes and skies using soft pastels. With demonstrations throughout and ongoing one-to-one critique, plenty of support for beginners and encouragement for the more experienced will inspire you to use this exciting and very versatile medium.

Date 7 to 11 Sept

Tutor Eileen Gardner

Cost Residential: £605
Non-residential: £395

Course code A2609EG



INTRODUCTION TO NATURAL DYEING

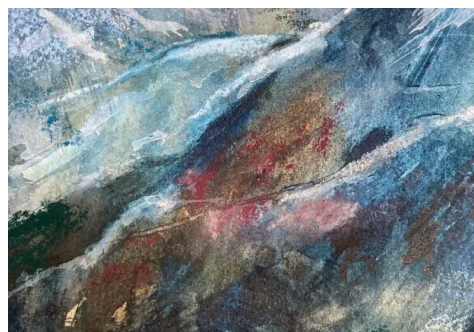
This course is suitable for beginners and those with some knowledge. We will use traditional plants to dye animal fibres, dyeing small hanks to produce a range of colours. A variety of techniques will be used. These exercises will produce samples to mount on cards and take home, and students will be shown how to keep reliable, concise for future reference notes.

Date 8 to 11 Sept

Tutor Judy Hardman

Cost Residential: £515
Non-residential: £360
(incl. materials)

Course code C2609JH



PAINT THE COLOURS OF THE LANDSCAPE YOU LOVE

Bring photos, sketches, notes or just memories of a place that has meaning for you. We will explore colour to help you develop palettes to interpret your sense of place in your painting. We will be learning about how to choose and use colour, through studies and experiments, before applying to your painting. Not for beginners, and please, no oils.

Date 11 to 13 Sept

Tutor Alex Jakob-Whitworth

Cost Residential: £365
Non-residential: £260

Course code A2609AJW



ANIMAL PORTRAITS IN PASTEL

For both beginners and improvers. Complete a tutor-led portrait of an animal on velour paper. Learn about various types of pastel and surfaces and practice layering, blinding and building up texture. After this exercise, work on a picture of your own choosing with Paul's patient and generous one-to-one support. All materials provided but please bring your own photographs & reference material for the personal choice of subject (keep them clear and simple), a folder (A3 size or larger) for completed work and an apron or old shirt to protect your clothes.

Date 11 to 13 Sept

Tutor Paul Holmes

Cost Residential: £380
Non-residential: £275 (incl. box of pastels to keep)

Course code A2609PH



PLAYING WITH THE PAST: ADVENTURES IN CULTURAL HERITAGE

Even though it is linked to memories of things past, 'heritage' is a modern concept and very much an idea that, like its subject, continues to evolve. Heritage is a term that refers to the use we make (in the present) of the remains of the past, be they objects, buildings, landscapes, or practices. To some, heritage is a building. To others, it means aspects of traditional or indigenous cultures that are preserved through practice, such as a language or festival. The idea of heritage raises all sort of questions – what is preserved/protected, and for what purpose? Set in an historic house within one of the UK's first designated conservation areas, this course will explore the varied and exciting world of heritage, introducing you to key ideas as well as stories from the past and the present. It is also an opportunity to put ideas into practice. We'll be asking each of you to bring along a story about heritage from your home and during the course, we'll explore how we might address it in the future.

Date 11 to 13 Sept

Tutor Ed Hollis

Cost Residential: £365
Non-residential: £260

Course code H2609EH



BOTANICAL ART USING COLOURED PENCILS: AUTUMN COLOURS AND FORMS

At this time of year, leaves will be turning whilst fruits and seeds ripen. Working from your choice of gathered subjects, this is a perfect time to capture the interesting forms and glorious riot of colour using coloured pencils as nature puts on its seasonal finale. Suitable for beginners and those with some experience with coloured pencils.



Date 13 to 16 Sept

Tutor Susan Christopher-Coulson

Cost Residential: £505
Non-residential: £345

Course code A2609SCC



SCULPTING IN CLAY

Students will be guided to sculpt two self-supporting figures (sculptures not supported by armatures) which can be human, animal or mythical. All levels of ability are welcome. Tools will be provided for anyone who needs them but if you have some experience of sculpting in clay, please bring your preferred modelling tools. You should also bring an apron and photographs of your intended subject(s) taken from all angles and/or maquette(s), if available. Completed works will be approximately 14 and 30 cm high and will be fired at a later date when dry. This course is accessible to all, including anyone with visual impairment.



Date 13 to 17 Sept



Tutor Kay Latto

Cost Residential: £605
Non-residential: £395

Course code C2609KL

Date 13 Sept
2 to 4pm



Tutor Alan Cleaver

Cost £10 including
refreshments

Course code D2609AC



SUNDAY LECTURE: THE CORPSE ROADS OF CUMBRIA

A talk and discussion about the corpse roads that criss-cross Cumbria. These ancient paths were used in medieval times to take the dead to the 'mother' church for burial but around 30 still survive as public footpaths. The talk will look at the history of the corpse roads, the evidence for their routes and the legends and customs surrounding them.

VISITING LAKELAND GARDENS

Join expert horticulturalist Louise on an intimate tour of Lake District gardens, including some not normally open to the public. Meet the gardeners, discover new plants and garden design inspiration behind the gates, walls and clipped hedges of some hidden horticultural gems of the Lake District.

Date 13 to 16 Sept



Tutor Louise
Stoddart

Cost Residential: £545
Non-residential: £385
(incl. field trips)

Course code N2609LS

EXPLORING SHAKESPEARE: THE TAMING OF THE SHREW

This comedy of disguises, deception and war between the sexes is always a box office hit. But is it simply a knockabout farce or something more serious - a disturbing celebration of misogyny or subversive exposé of such attitudes? Join us to explore this intriguing play, Shakespeare's intentions and a range of approaches to staging this controversial work.



Date 14 to 17 Sept



Tutor Clare Smout

Cost Residential: £505
Non-residential: £345

Course code L2609CS

INTRODUCTION TO CREATIVE STITCHING



A fun way to get serious, stitching little creative projects using a stash of bits and pieces. Basic materials are provided, but feel free to bring some fabric of your own if you wish. Ann will guide you with professional tips and techniques. Relaxed and absorbing,

this is a course to inspire your creativity and awaken your needle and/or sewing machine skills. For beginners and seasoned sewers. Materials available to purchase from tutor approx. £10.

Date 16 to 18 Sept



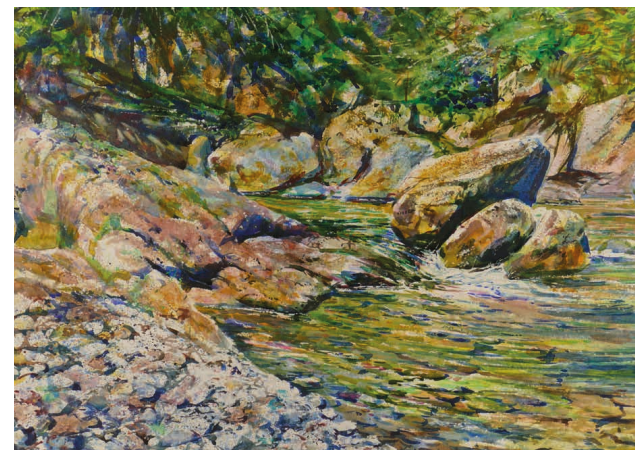
Tutor Ann Gill

Cost Residential: £365
Non-residential: £260

Course code C2609AG

PAINTING TUMBLING WATER

Water cascading over rocks is always captivating, even thrilling to watch in nature. It is little surprise that it is such a popular feature of landscape paintings. Jason has spent years studying this subject, finding the best ways to teach painters how to render tumbling water with greater ease and skill. Why not take the mystery out of the process and grab this opportunity to take your water and rock painting skills to the next level?



Date 17 to 20 Sept



Tutor Jason Skill

Cost Residential: £505
Non-residential: £345

Course code A2609JS

LATE SUMMER YOGA AND WALKING

A perfect mix of hatha yoga sessions (working on postures, breathing exercises and relaxation) and guided hill walks of up to 5 miles, sometimes over rough and steep ground (requiring a reasonable level of fitness) among the peaceful northern fells - which will leave you feeling supple, relaxed and refreshed! Suitable for beginners and experienced.

Date 17 to 21 Sept

Tutor Gill and Alan Hunter

Cost Residential: £715
Non-residential: £490
(incl. field trips)

Course code F2609GH



ADVANCED RECORDERS ONE-TO-A-PART

For advanced players (Grades 6-8). An opportunity to play in an ensemble with a focus on one-to-a-part playing, with expert guidance as appropriate.



Date 18 to 20 Sept

Tutor Annemarie Klein

Cost Residential: £370
Non-residential: £265

Course code M2609AK



DRAWING AND PAINTING LAKELAND CHURCHES

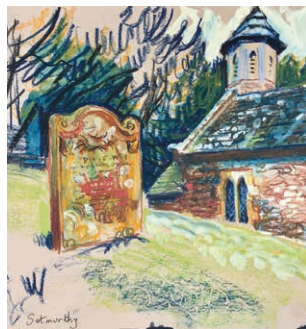
The northern Lake District contains many characterful old churches set in beautiful rural locations - surrounded by mountains and hilly meadows or with expansive views over the Solway estuary. Join Lionel on sketching and painting expeditions to various churches and churchyards to hone your skills in drawing both architectural and natural forms using line, tone, colour and mark to capture their unique sense of place. There will be demonstrations throughout including line drawing, tonal studies and mixed media in colour. Draw inspiration for different expressive approaches by looking at the work of great artists from JMW Turner to John Piper, and consider the way local artists Sheila Fell and Percy Kelly approached this landscape.

Date 20 to 24 Sept

Tutor Lionel Playford

Cost Residential: £645
Non-residential: £435
(incl. field trips)

Course code A2609LP



MIXED TECHNIQUE EMBROIDERED INITIALS INSPIRED BY ILLUMINATED MANUSCRIPTS

We will use a range of techniques including applique, silk shading, goldwork and beading to explore an initial of your choice in a design inspired by illuminated manuscripts. Mixed ability class.

Date 21 to 24 Sept

Tutor Helen McCook

Cost Residential: £560
Non-residential: £395

Course code C2609HM1



INTERMEDIATE CHOIR

If you love to sing, feel that your confidence is growing steadily, but would like more experience in a friendly, nurturing environment, then this course is for you. There is no need to read music fluently but an interest in note reading would help a little. We will explore all kinds of music, in parts, from the vast selection of both folk song arrangements and original, beautiful classical repertoire for choirs.

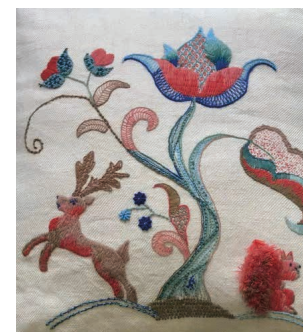
If you have any questions about suitability, do drop Deborah an email with your query: deborah_catterall@yahoo.com.

Date 22 to 24 Sept

Tutor Deborah Catterall

Cost Residential: £365
Non-residential: £260

Course code M2609DC



TEXTURAL JACOBAN CREWEL WORK EMBROIDERY

This course will explore a range of textures using crewel wools on linen twill fabric. We will try to focus predominantly on stitches that are less commonly used and will work on a design in the Jacobean style. The size of the project will be a small panel or cushion front.

Date 24 to 27 Sept

Tutor Helen McCook

Cost Residential: £560
Non-residential: £395

Course code C2609HM2



SHAPING OF THE LANDSCAPE: GLACIERS, FLOODS AND LANDSLIDES

A course designed to explain and demonstrate how the landscape of the Lake District has been shaped by glaciers, floods and landslides, and frost-action processes on the high fells. Evening presentations and daily field trips will show when and how these land-forming processes took place and their results.



Date 24 to 27 Sept

Tutor Dr. Peter Wilson

Cost Residential: £535
Non-residential: £375
(incl. field trips)

Course code N2609PW



WOODBLOCK PRINTMAKING

Transform your own designs into print, perhaps for a Christmas card, using the fascinating media of woodcut and wood engraving. Working with plywood, MDF, end-grain hardwood or plastic blocks, this 3-night course will enable you to broaden your skills, whatever your art background. Beginners welcome.



Date 24 to 27 Sept

Tutor Peter Collins

Cost Residential: £505
Non-residential: £345

Course code C2609PC



WOVEN TAPESTRY: AN INTRODUCTION

Whether you are a beginner or in need of a refresher, this workshop is designed to give you a solid technical grounding in the fundamental techniques of tapestry weaving. Participants will learn essential weaving techniques from setting up a loom, weaving a design based on stripes and squares, to finishing your tapestry. Based on chapters 1 and 2 of *Woven Tapestry: Art and Practice* (2025, Crowood Press) by Louise Martin and Ros Bryant. All equipment provided.

Date 27 to 29 Sept

Tutor Louise Martin

Cost Residential: £370
Non-residential: £265

Course code C2609LM1



EXPLORE THE FUN OF COLLAGE

Collage frees you up from the 'rules' of representational drawing or painting and allows you to explore a more personal artistic language. It is a compositional technique that combines found images, printed text or textured surfaces – often alongside painted or hand-drawn elements – to create an image that can be abstract, expressive and sometimes contain social commentary. Flex your artistic muscles with creative exercises and develop your own compositions guided by professional artist Sue Ford.



Date 27 to 30 Sept

Tutor Sue Ford

Cost Residential: £505
Non-residential: £345

Course code A2609SF



WOVEN TAPESTRY: ADDING TO PLAIN WEAVE

Explore techniques which can be used freely within areas of plain weave without needing to be concerned about being in the right shed. These include loops, tufts, types of soumak, exposing warps, weaving over multiple warps and changing wefts. This course is based on chapter 8 of *Woven Tapestry: Art and Practice* (2025, Crowood Press) by Louise Martin and Ros Bryant.

Date 29 Sept to 1 Oct

Tutor Louise Martin

Cost Residential: £370
Non-residential: £265

Course code C2609LM2



NATURE JOURNALLING FOR WELLBEING

Spending time in nature and journaling are both great for promoting wellbeing, so combine the two in the relaxing and nurturing environment of Higham. This non-judgmental course helps you to develop your own style of journaling, combining words and art to reflect and celebrate the world around us. There will be a focus on promoting good mental health, but also on having a rewarding time, and producing a journal to be proud of. The methods you will learn can easily transfer to other forms of journaling to record experiences of travel or gardening. The tutor will bring an extensive selection of books and reference materials, including examples of nature journals, 'how to' books and ID guides to inspire your journey. Beginners and those who believe that they are 'no good' at art are very welcome. A blank journal is provided but please bring your own water-based paints/inks, pencils and pens.



Date 29 Sept to 1 Oct

Tutor Andrew Thurm

Cost Residential: £375
Non-residential: £270

Course code A2609AT



WOVEN TAPESTRY: 2D

Use tapestry techniques to create the illusion of an undulating surface like cloth hanging in loose folds, or waves at sea. Samples using solid and blended colour will be woven before creating your own image. This course is suitable for those with some experience.



Date 1 to 5 Oct

Tutor Louise Martin

Cost Residential: £610
Non-residential: £400

Course code C2610LM



ADDITIONAL INFORMATION

COURSE FEES

Non-residential course fees cover tuition, morning coffee/afternoon tea, lunch and dinner.

Residential fees cover tuition, accommodation and all meals and refreshments.

Materials: In addition to the course fees, there may be some additional itemised costs to cover materials provided as part of the course. These are often paid direct to the course tutor at the start of the course and are not included in the course fees unless otherwise stated. Full details in the course programme.

Field trips: Some courses involve field trips to locations around Cumbria and the Borders. Where this is the case, course fees include a small additional charge to cover associated costs.

Course programmes are available on request and are sent with your booking confirmation.

OTHER EVENTS

The ticket price for lectures and performances include refreshments unless otherwise stated.

BURSARIES AND ASSISTED PLACES SCHEME

If you are in receipt of individual State Benefits or aged 18-25, you can apply for either:

- an assisted place: up to 20% discount on course fees.
- a bursary: a one-off discretionary award up to the value of 70% of course fees.

Please complete an application form available from the office: 017687 76276
admin@highamhall.com

Bursaries and the assisted place scheme are supported by Friends of Higham membership subscriptions. Awards are made at the discretion of Higham Hall College and subject to availability of funds.

TO BOOK A PLACE

Please call the office on 017687 76276 to enquire about a course, book a place and discuss your accommodation requirements.

1-day (non-residential) workshops

Full fee payable on booking.

Residential courses

A non-refundable deposit of £50 is required to reserve a place on a residential course. Payment of any outstanding course fees must be made no less than one month before the course start date.

You can book/pay

- over the telephone using a credit or debit card
- by sending a cheque made out to 'Higham Hall College Limited' with a completed booking form (enc.)

Please note, your booking will not be confirmed until this payment has been processed.

CANCELLATION POLICY

When paying the outstanding balance, you have the option to take out our cancellation cover at £5 per night. This guarantees an 80% refund of the course fee (less non-refundable deposit of £50) if you need to cancel your place within one month of the course start date because of illness, injury or death of self or close relative (a doctor's certificate or equivalent evidence may be required). Please note we are unable to issue any refund without this cover although your own travel insurance may cover you.

COVID-19

There are no current COVID-19 restrictions in the UK. If you have COVID-19 you should try to stay at home. To help us protect other students who may be vulnerable, please call to inform us if you have a positive COVID-19 result in the week before your course.



HOW TO GET HERE

Higham Hall is on the northern edge of the Lake District, between Cockermouth (3 miles) and Keswick (8 miles), near Bassenthwaite Lake.

Postcode: CA13 9SH

What3words: buzzards.practical.trickled

By car

From the A66, take the B5291 signposted Dubwath/Castle Inn. Higham Hall is signposted after turn-off. Continue 500m to the junction, turn right, go 500m and turn left 500m up the hill.

From Carlisle (A595), turn left at Bothel (A591) and turn right onto B5291 at Castle Inn. After Ouse Bridge bear sharp right, take 2nd road on the right 500m up the hill.

Public transport

Nearest railway stations: Penrith (25 miles), Carlisle (24 miles).

From Penrith station, take the X4/X5 bus service towards Workington & get off at the Lakes Distillery or Embleton Wheatsheaf pub.

From Workington station, take the X4/X5 bus service towards Penrith & get off at the Lakes Distillery or Embleton Wheatsheaf pub.

From Carlisle station take the no.554 bus towards Keswick & get off at the Castle Inn Hotel.

Please let us know if you intend to travel by public transport. We can meet you at these bus stops if you arrive before 5pm.

Alternatively, pre-book taxis from the station to Higham for a fair fixed rate (currently £60) with either Davies Taxis (Keswick): 017687 72676 or Tracy's Travel (Cockermouth): 07593 013327.

ADDITIONAL INFORMATION

STAYING AT HIGHAM

We aim to ensure Higham is a place where everyone feels at home.

We do our best to accommodate different needs wherever possible. Please tell us about any additional requirements before arrival.

We are committed to fostering an open and inclusive environment where everyone can learn and work without encountering prejudice or discrimination and is treated with dignity and respect.

Check in is from 4pm; check out is 9am. The Bar is open nightly 6-10:45pm. If not in use for a course, the Drawing Room is a cosy place to while away a quiet hour or two. You will find a wide range of reading material on the bookshelves and a basket of donated books to take from or add to while you are here. All bedrooms have tea and coffee-making facilities, hot water bottles, a hairdryer and radio. Liquid soap, towels and bathrobes (in bedrooms where the bathrooms are not ensuite) are provided. There is a drying room for damp clothes and boots. The office (open 8am–6pm) stocks a small selection of travel essentials if you forget anything and there is a member of staff on duty 24/7.

On the menu

We serve a hearty breakfast, 2-course lunch and 3-course dinner every day. Morning coffee and afternoon tea with homemade biscuits and cakes are also provided. All meals are freshly prepared in our kitchens from locally sourced ingredients so we are able to accommodate most dietary or allergy requirements. Please tell us about any dietary needs on booking.

Accommodation

Every room is different at Higham. We offer single, twin and double rooms. All have private bathrooms but not all are ensuite.

We charge an ensuite supplement of £10pppn. Double occupancy of twin rooms is discounted at a rate of £5pppn. Carers sharing a room will be charged for meals only. Bedroom accommodation in the main house is on the first floor, and we have a stairlift to help with access. There are also a number of ground floor rooms with level access in the Gatehouse and Bungalow, which are a short distance from the main house. We offer one fully accessible (single) bedroom. Please get in touch to discuss any mobility issues so we can ensure you are offered appropriate accommodation.

We have set aside two ground floor rooms for guests who wish to bring their dogs. There is an additional charge of £30 per dog to cover housekeeping costs. Please check availability on booking.

There is plenty of free parking on site.

Hook-ups and a sluice room are available for students wishing to stay in campervans or motor homes. Please tell us in advance. A charge of £15 per vehicle per night will be due on booking.

Electric car charging is no longer possible on site. Please call for guidance on nearest charging points.

Space permitting, we also welcome guests who are not attending courses.

B&B standard room £72 (ensuite +£12pppn)

Breakfast £14.40, Lunch £19.20, Dinner £31.20

Please note these prices include VAT.

Alternative B&B accommodation is available in the local area; please ask the office for recommendations.

PLEASE SUPPORT US

Higham Hall College is an educational trust (charity no.1124959), one of an increasingly small number of independent colleges across the UK offering informal adult education in a residential setting.

We know that Higham has a positive impact on people's lives. Help Higham continue to thrive and ensure that this special place will always be an inspiring and convivial haven for creative and curious minds. For more information visit highamhall.com/support-us.



Looking for gift ideas?

All your purchases help support Higham. We have a selection of tutors' handmade gifts, prints, books and cards for sale. We also have jute bags capacious enough to carry all your crafting gear, reusable insulated stainless steel water bottles handy for field trips, and gorgeous bone china mugs designed by tutor Susan Christopher-Coulson.

Higham gift cards are also available and can be credited with any amount, valid for 2 years.

There are different ways you can help:

Volunteer

Volunteers help us with a wide range of vital tasks, from gardening or driving the minibus to making curtains. If you have a skill, enjoy meeting new people and can offer a few hours of your time either on a regular weekly basis or for a few concentrated days, please get in touch.

Become a Friend of Higham

A regular monthly or annual membership subscription could help sustain Higham all year round. All Friends receive a copy of this brochure two weeks in advance of the general mailing, an annual newsletter and access to special Friends-only events.

Donate

Help us maintain the fabric of our historic grade II-listed building and grounds, invest in new facilities and support access for all. We welcome one-off donations towards specific projects such as the roof appeal or bursaries fund. Every gift has a meaningful impact.

Leave a Lasting Legacy

A gift in your will is one of the most special and enduring ways to support Higham and help to preserve it for future generations.



FRIENDS OF HIGHAM

The Friends of Higham were established in 1993. Over the years, membership subscriptions have provided vital funds to open up areas of the garden, purchase furniture and support bursaries and assisted places.

Since relaunching in February 2025, our community of Friends has grown to 137 members and raised £4,600. Last year, membership subscriptions supported 5 bursary awards and 10 assisted places for students in financial need and some much-needed maintenance of our buildings and facilities. We have begun to update some of the bedrooms and taken this opportunity to work with some of our fantastic tutors and students, so you will see examples of their artistry and craftsmanship in the rooms, from newly upholstered furniture to hand-woven fabrics and hand-bound welcome folders alongside artwork on the walls.

Joining the Friends of Higham provides valuable regular support for the college as well as the artists and makers we work with. To find out more, pick up a leaflet in your room or visit www.highamhall.com/become-a-friend





Higham Hall College
is an educational trust
supporting lifelong learning
in the arts, natural history
and humanities through
workshops, lectures,
residential courses and
retreats in the English Lake
District.



HIGHAM
HALL

Higham Hall
Bassenthwaite Lake
Cockermouth
Cumbria
CA13 9SH

017687 76276
highamhall.com

We are also a company limited by
guarantee and registered in England.
Company no. 06421365
Charity no. 1124959
VAT no. 927 4556 96